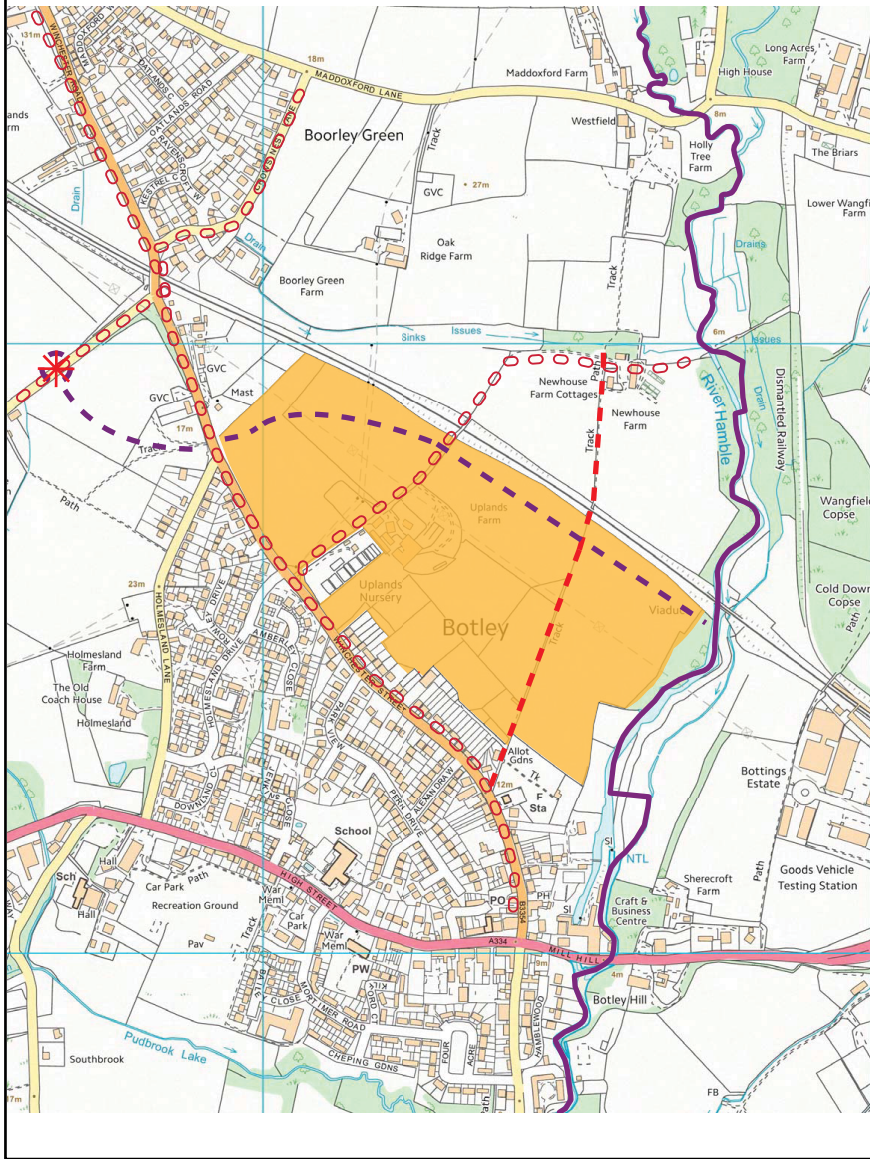
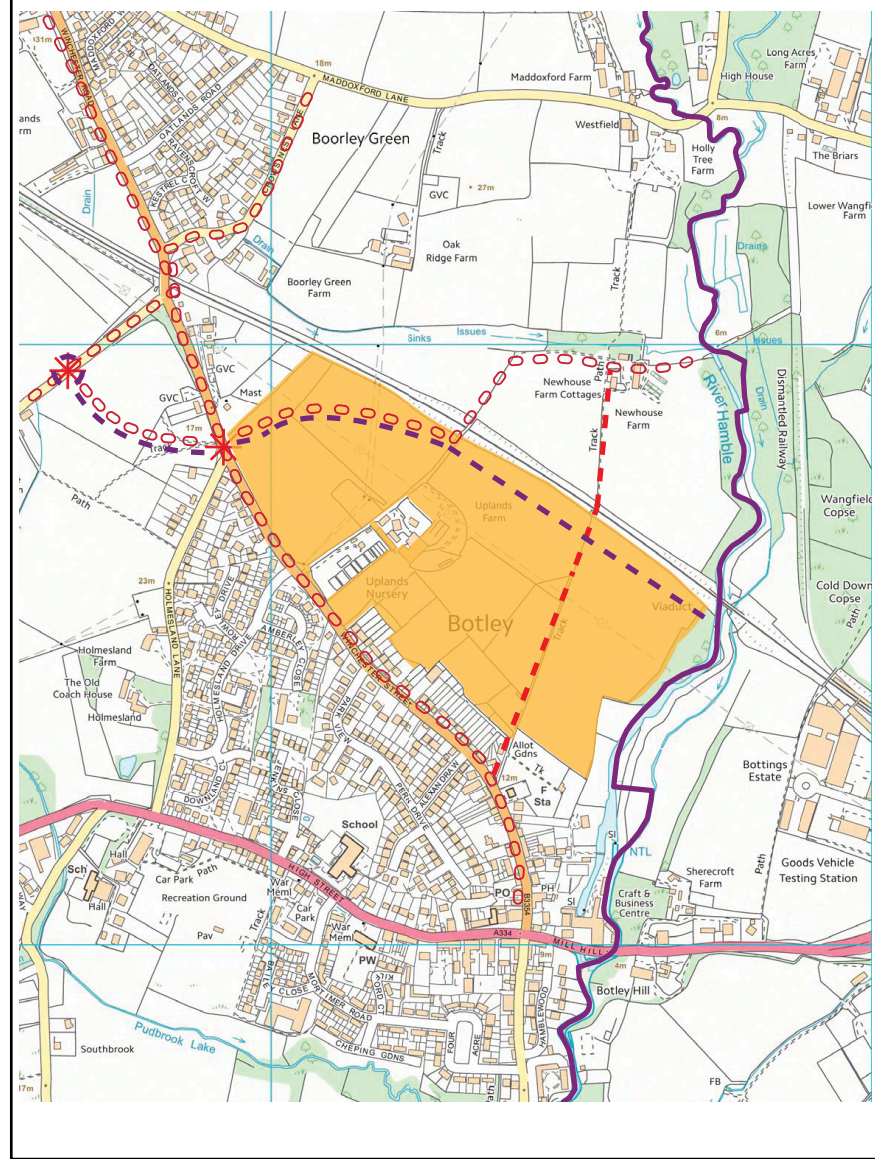


Submission Plan Location



Proposed modifications to the Policies Map



© Crown copyright and database rights (2019) Ordnance Survey (LA100019622)



Title

Modifications to Policies Map

Policy S12 and BO2, map to reflect recent planning permission
(See MM33 and MM117)

Key:

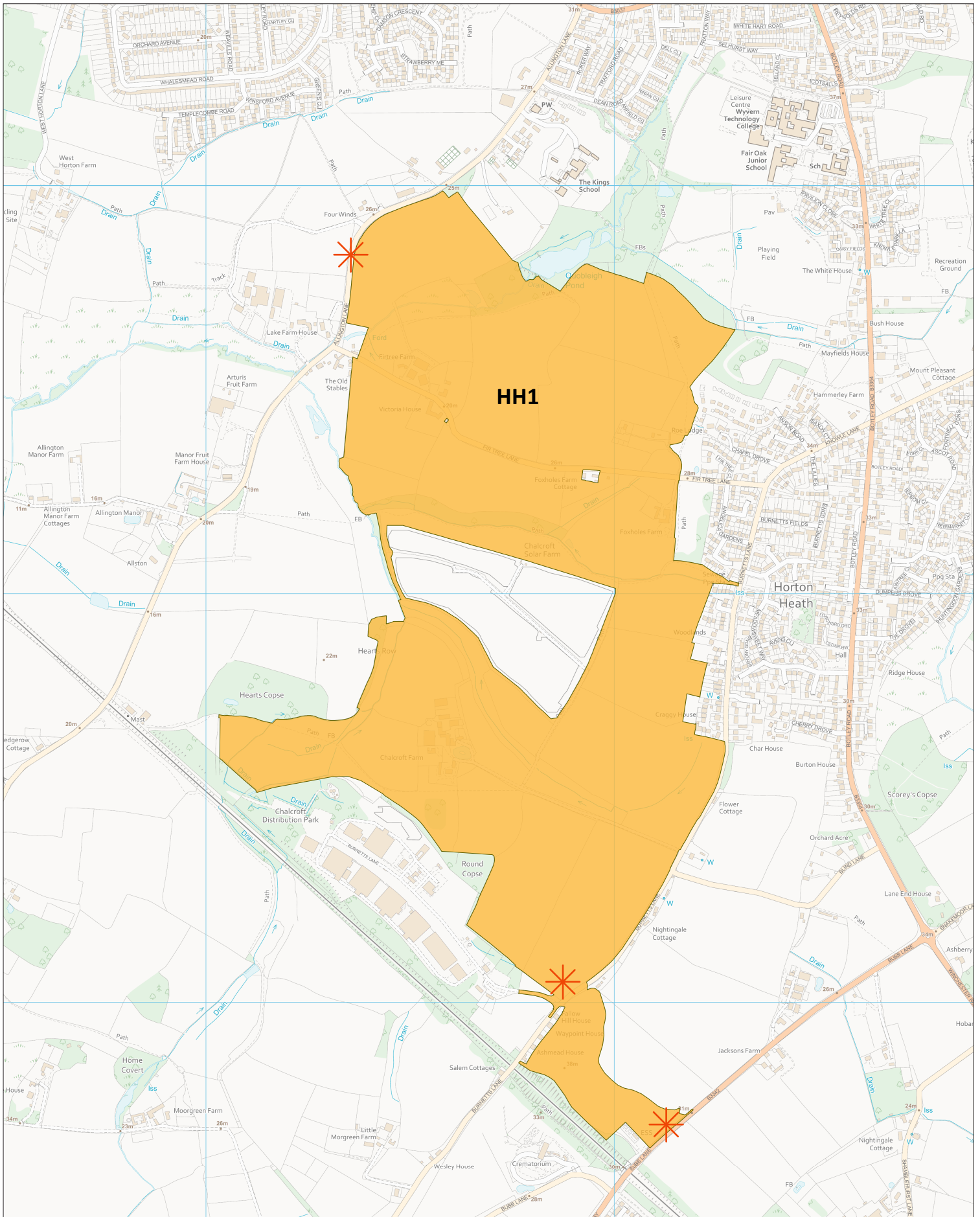
- - - Proposed New Road
- * Junction Improvement
- - - Proposed Strategic Footpath/
- o o o Cycleway/Bridalway
- - - Existing Footpath



Scale:
Not to Scale

Mod Reference:
PM4

Date:
April 2021



© Crown copyright and database rights (2019) Ordnance Survey (LA100019622)



EASTLEIGH
BOROUGH COUNCIL

Strategy Services

Title

Modifications to Policies Map

Policy HH1, New residential-led development site and

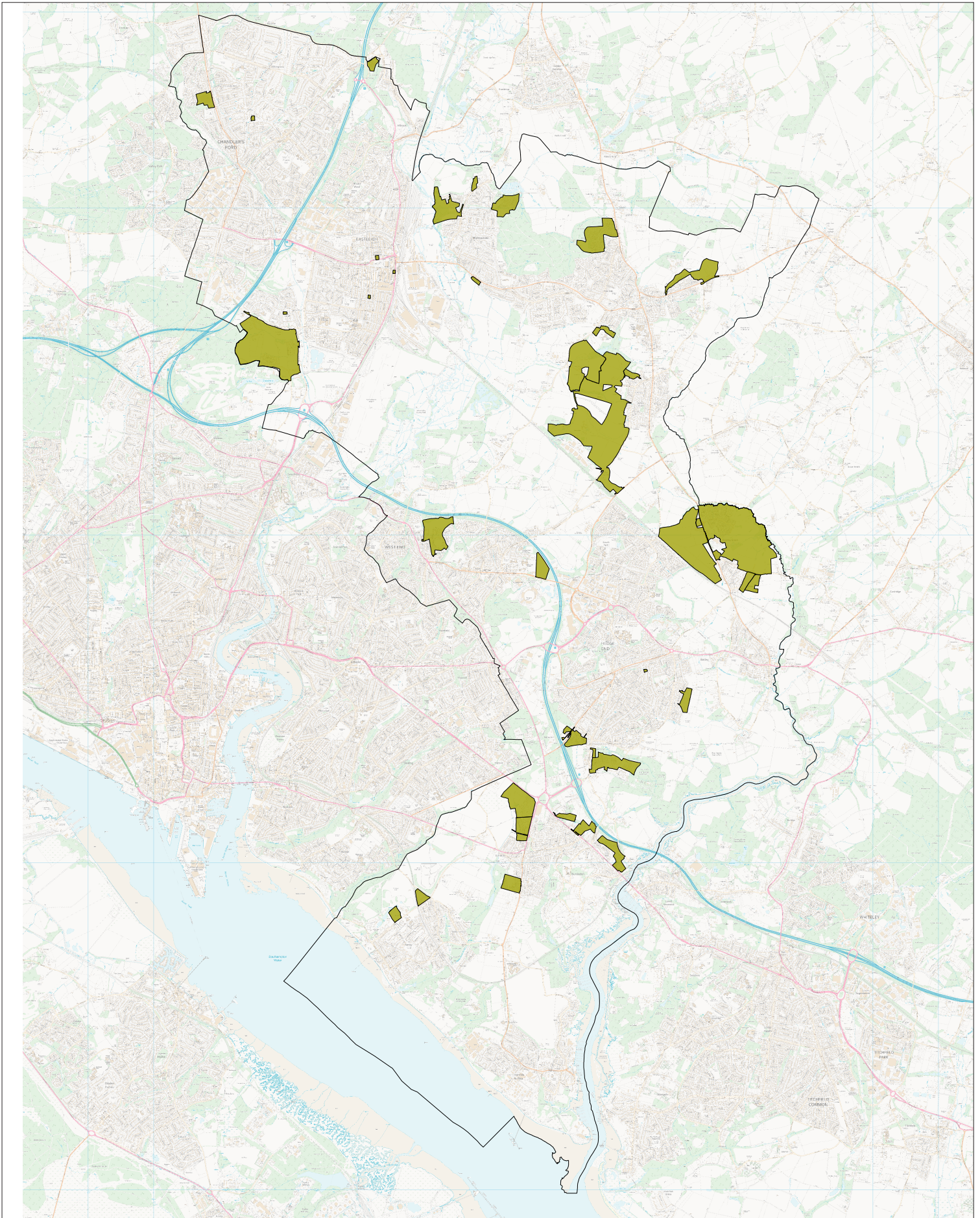
Policy DM13, additional highway improvements (See MM73)



Scale:
Not to Scale

Mod Reference:
PM5 and PM15

Date:
April 2021



© Crown copyright and database rights (2019) Ordnance Survey (LA100019622)



Strategy Services

Title

Modifications to Policies Map

Deletion of sites identified under Policy DM24 on map

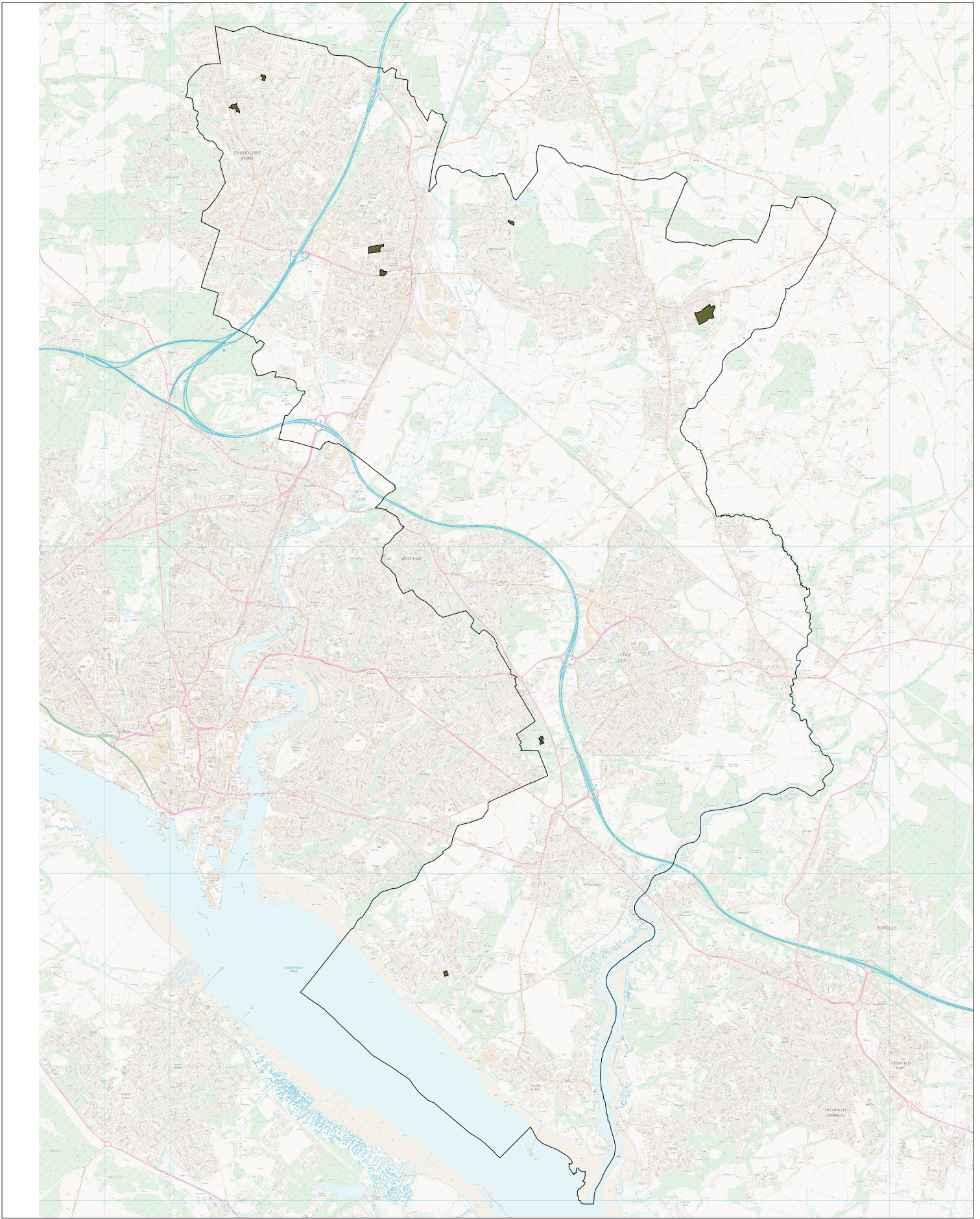
(See MM51)



Scale:
Not to Scale

Mod Reference:
PM7

Date:
April 2021



© Crown copyright and database rights (2019) Ordnance Survey (LA100019622)



Strategy Services

Title

Modifications to Policies Map

Deletion of sites identified under Policy DM25 on map

(See MM53)



Scale:
Not to Scale

Mod Reference:
PM8

Date:
April 2021