

© Crown copyright and database rights (2019) Ordnance Survey (LA100019622)



Strategy Services

Title

**Modifications to Policies Map**

Policy S6 - Amend Countryside Gaps (See MM27) Map 1



Area to be deleted

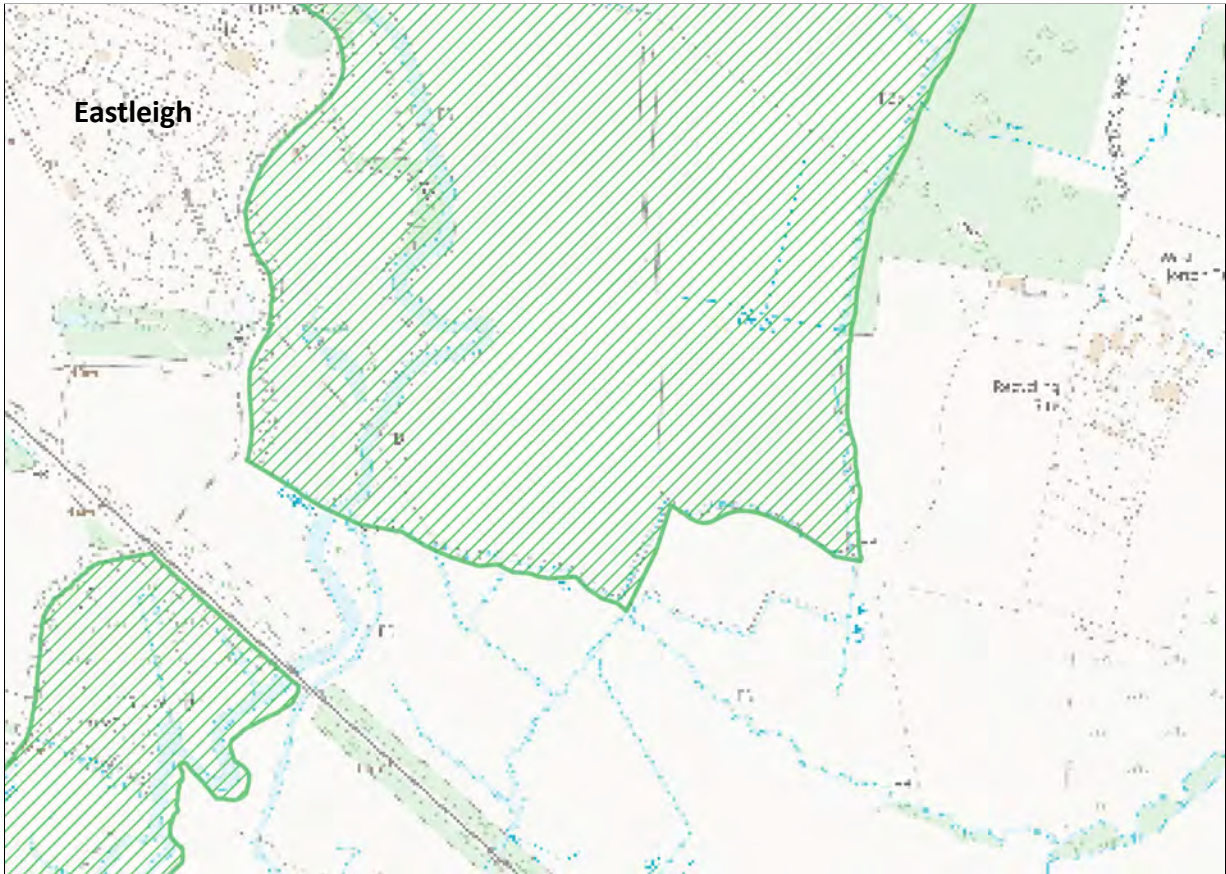


Scale:  
Not to Scale

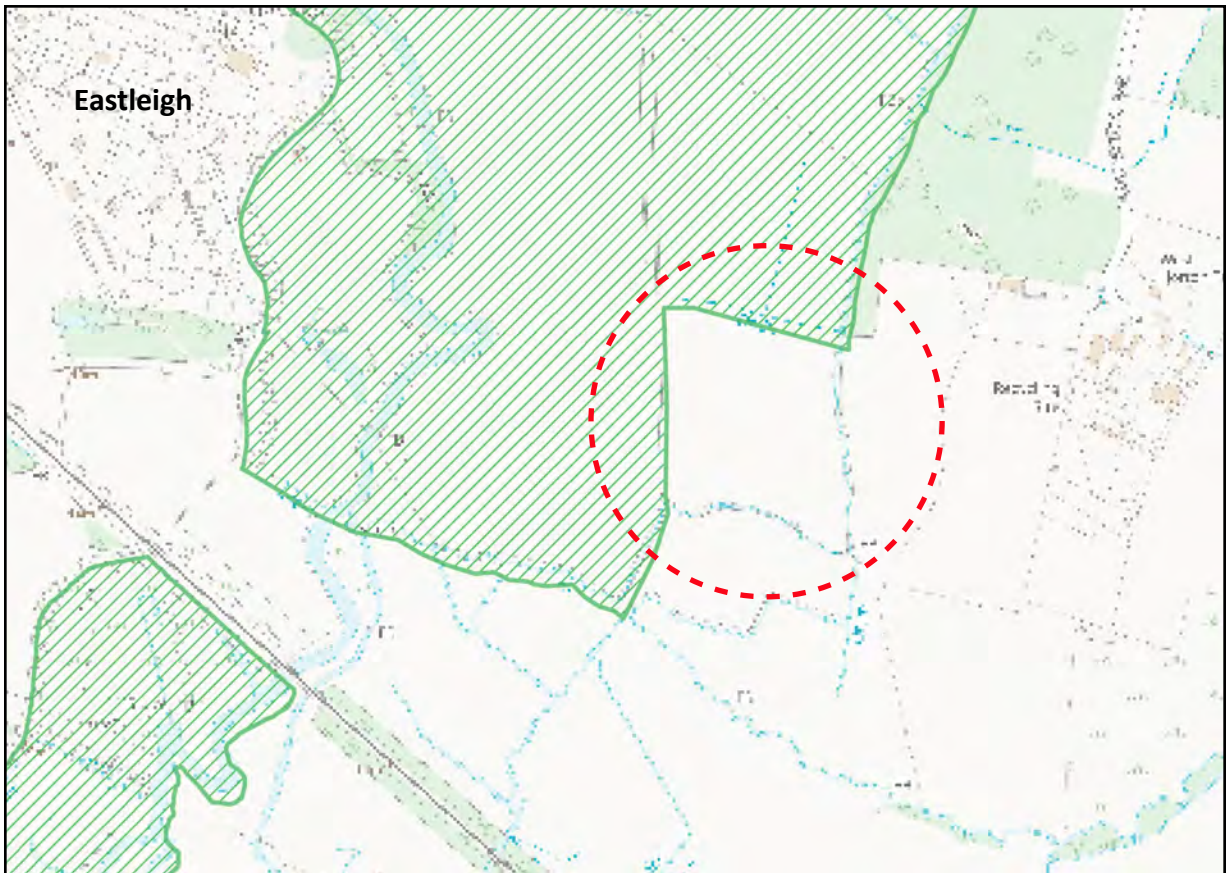
Mod Reference:  
PM3

Date:  
April 2021


### Submission Plan Location



### Proposed modifications to the Policies Map



© Crown copyright and database rights (2019) Ordnance Survey (LA100019622)

 Area to be deleted




**EASTLEIGH**  
BOROUGH COUNCIL

Strategy Services

Title

**Modifications to Policies Map**

Policy S6 - Amend Countryside Gaps (See MM27) Map 2

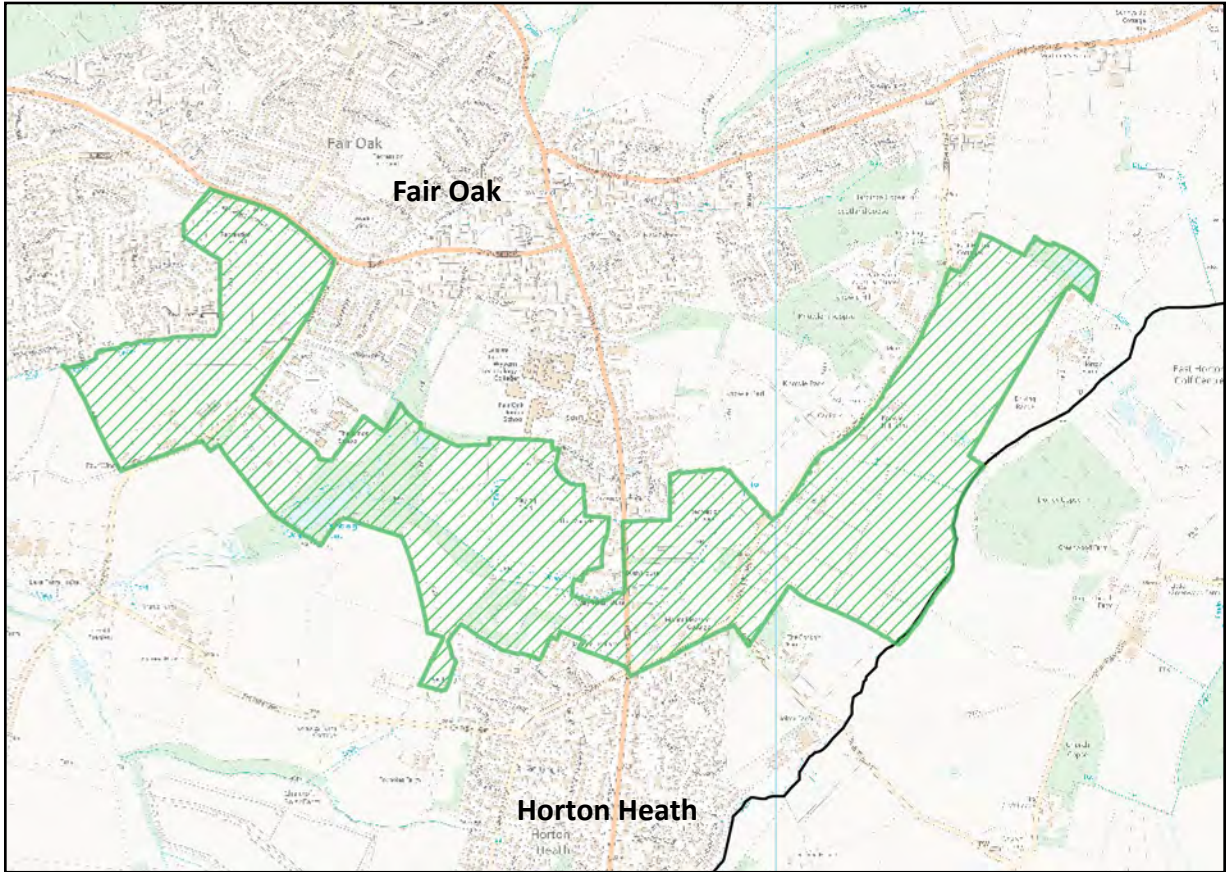


Scale:  
Not to Scale

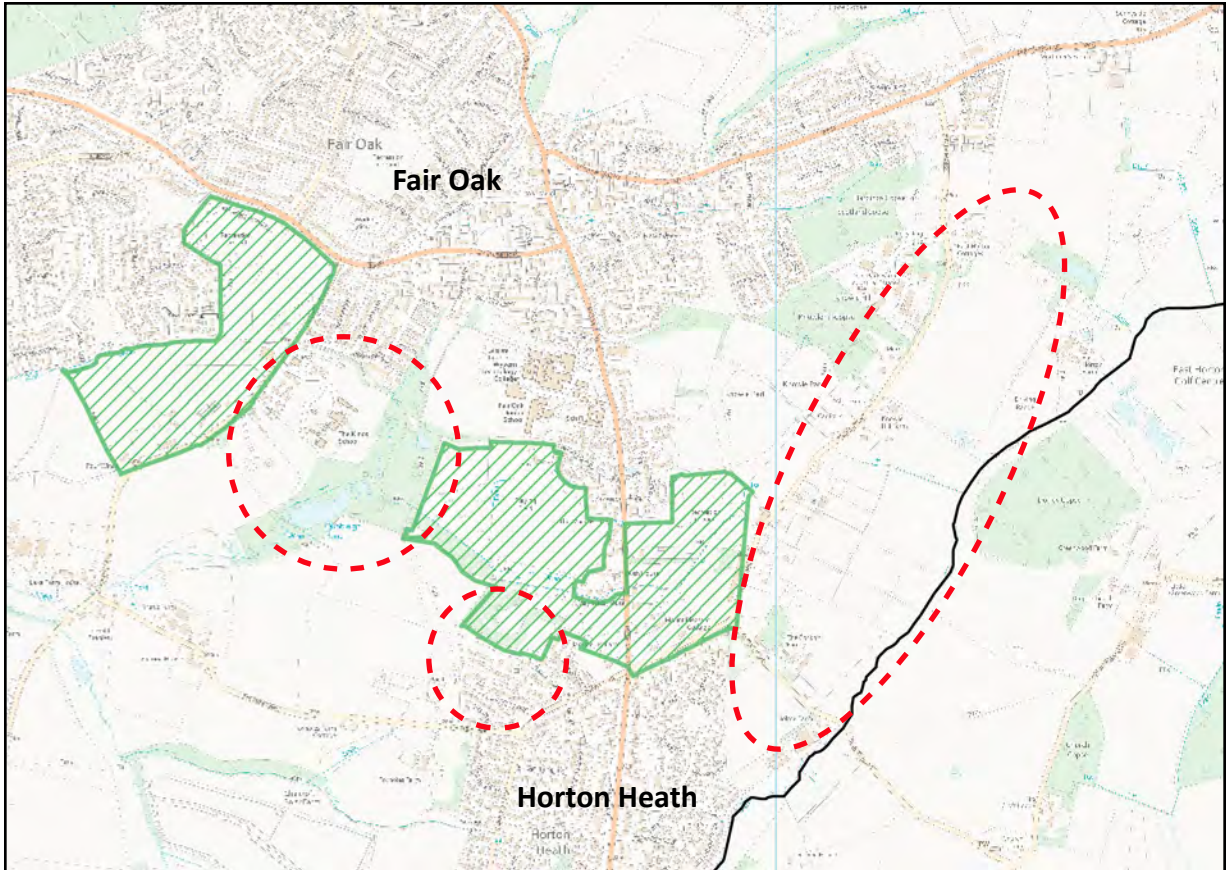
Mod Reference:  
PM3

Date:  
April 2021


### Submission Plan Location



### Proposed modifications to the Policies Map



© Crown copyright and database rights (2019) Ordnance Survey (LA100019622)

 Area to be deleted




**EASTLEIGH**  
BOROUGH COUNCIL

Strategy Services

Title

**Modifications to Policies Map**

Policy S6 - Amend Countryside Gaps (See MM27) Map 3

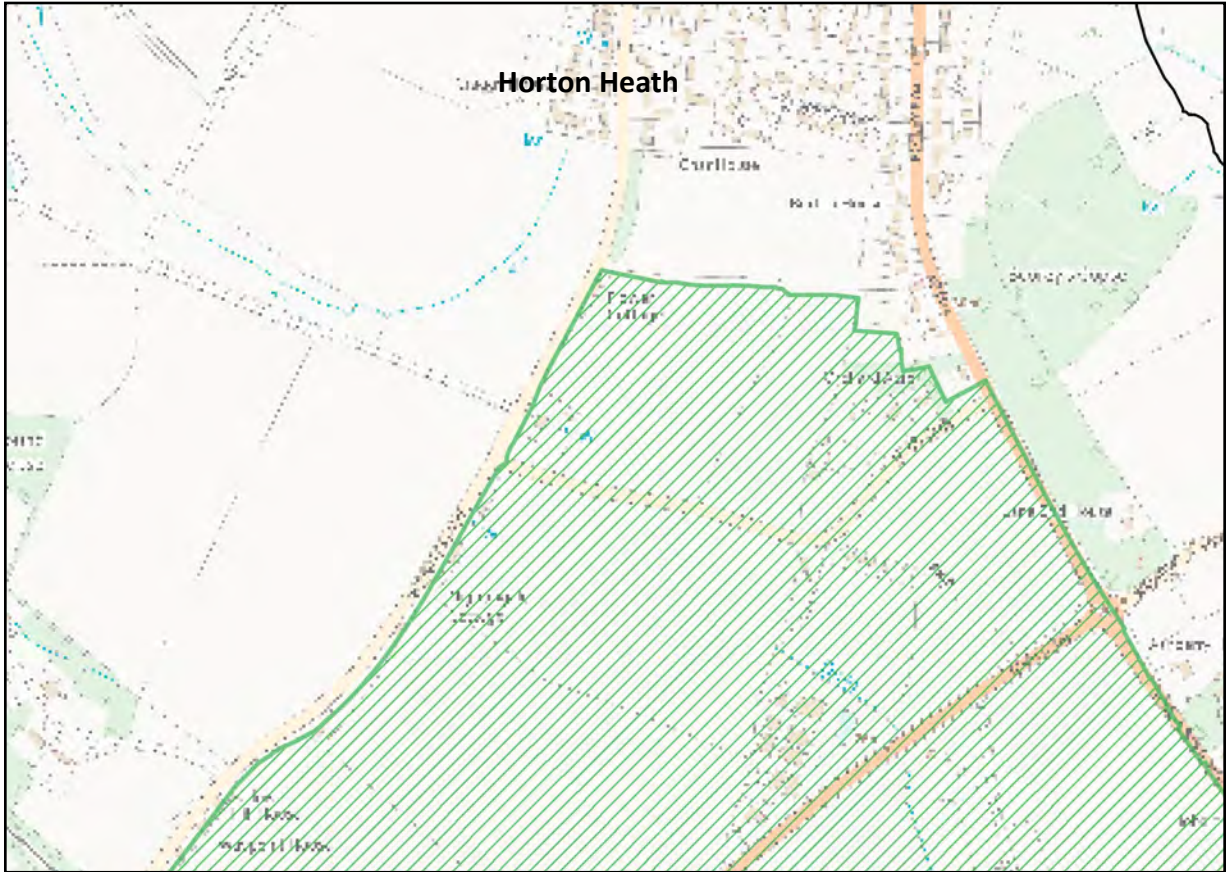


Scale:  
Not to Scale

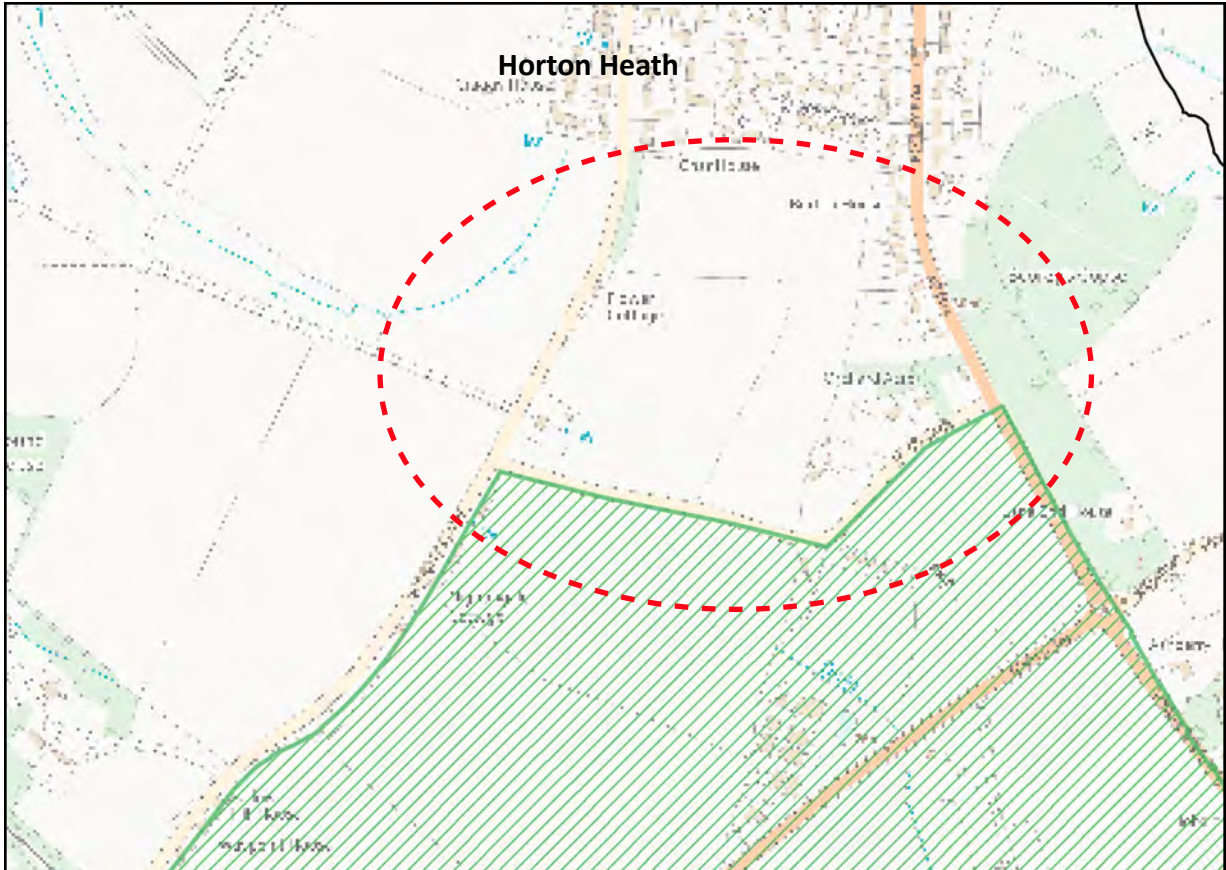
Mod Reference:  
PM3

Date:  
April 2021


### Submission Plan Location



### Proposed modifications to the Policies Map



© Crown copyright and database rights (2019) Ordnance Survey (LA100019622)

 Area to be deleted




**EASTLEIGH**  
BOROUGH COUNCIL

Strategy Services

Title

**Modifications to Policies Map**

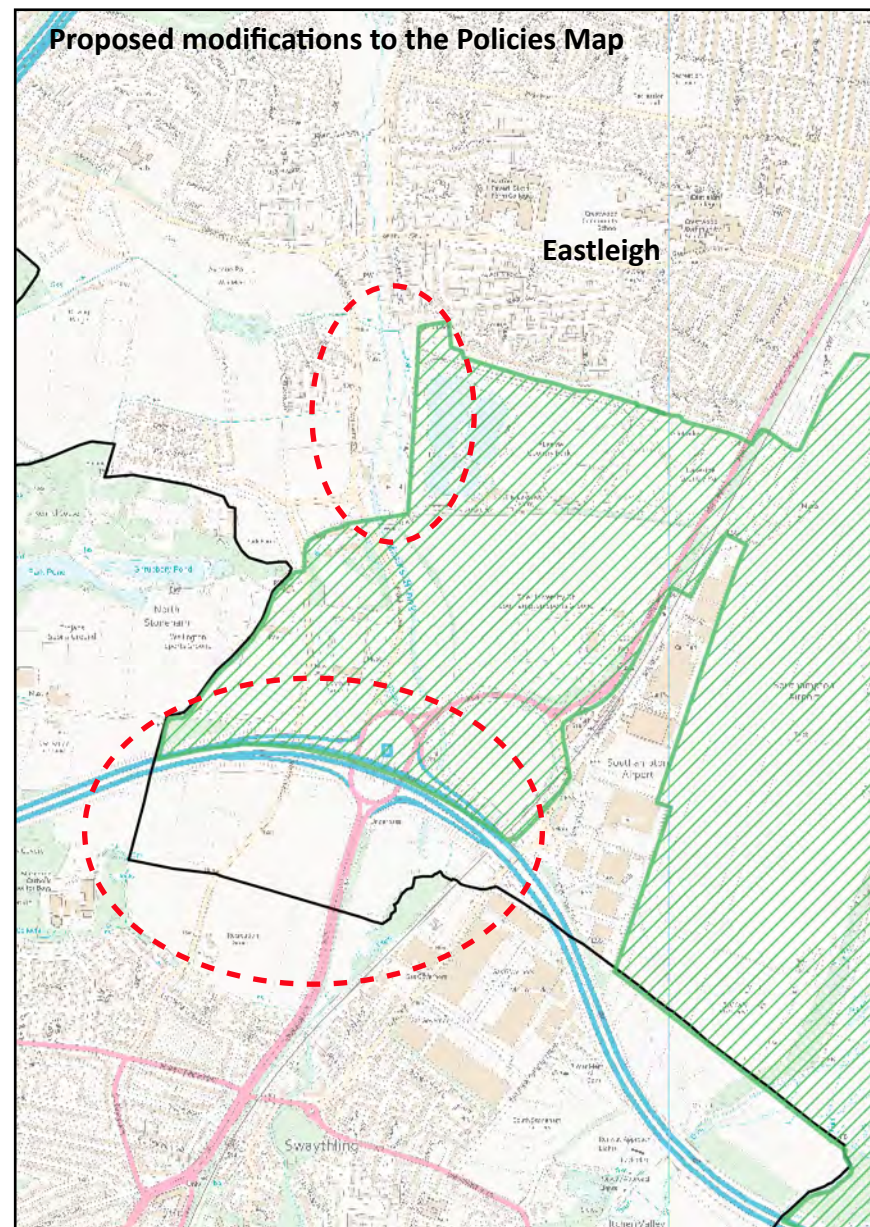
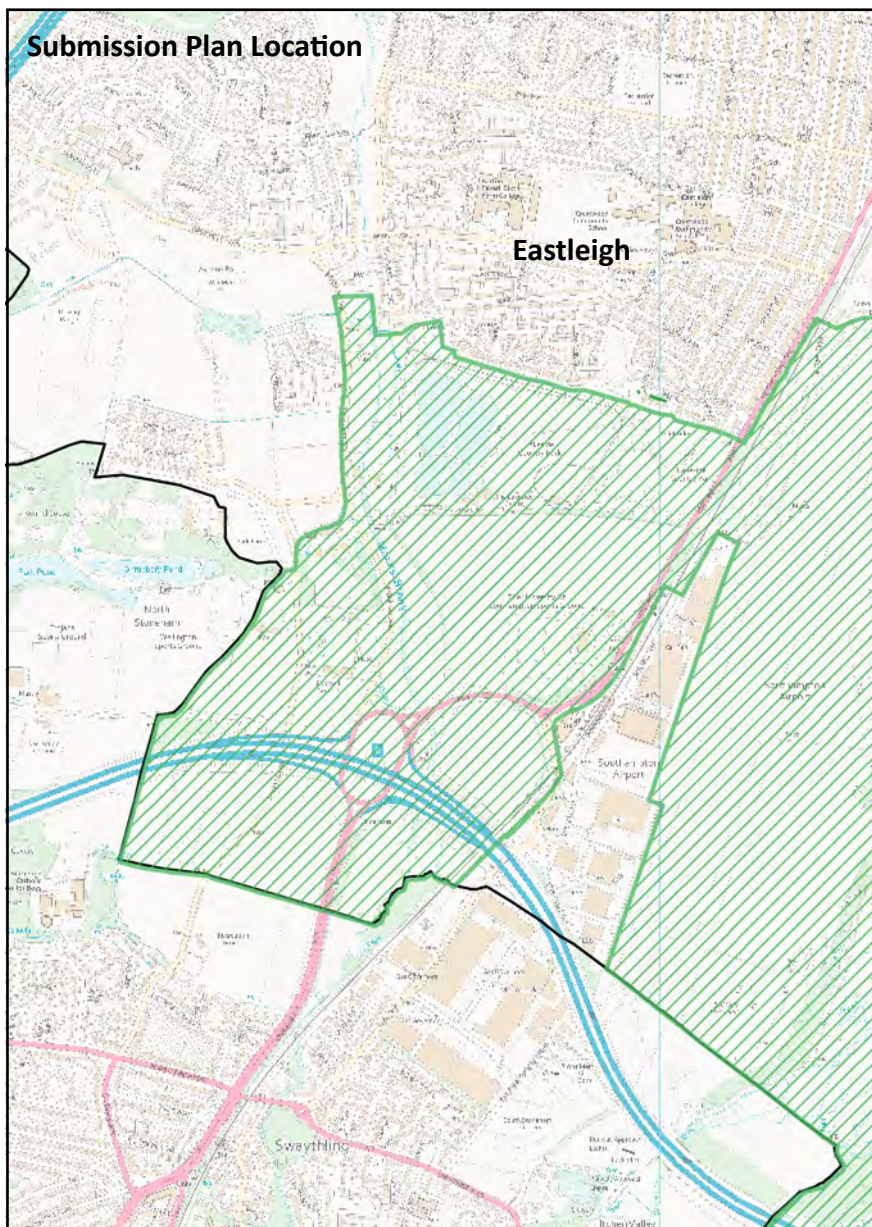
Policy S6 - Amend Countryside Gaps (See MM27) Map 4



Scale:  
Not to Scale

Mod Reference:  
PM3

Date:  
April 2021



© Crown copyright and database rights (2019) Ordnance Survey (LA100019622)



Strategy Services

Title

**Modifications to Policies Map**

Policy S6 - Amend Countryside Gaps (See MM27) Map 5



Area to be deleted

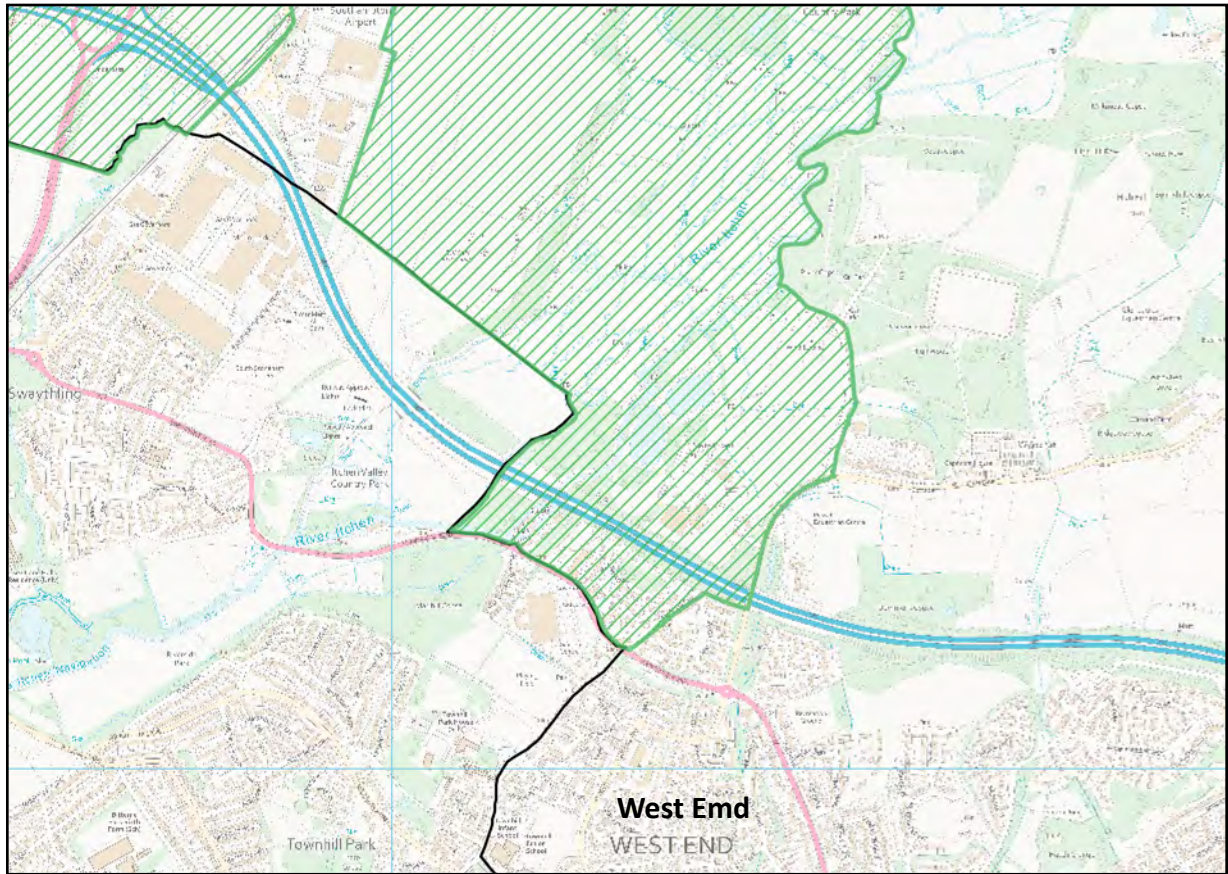


Scale:  
Not to Scale

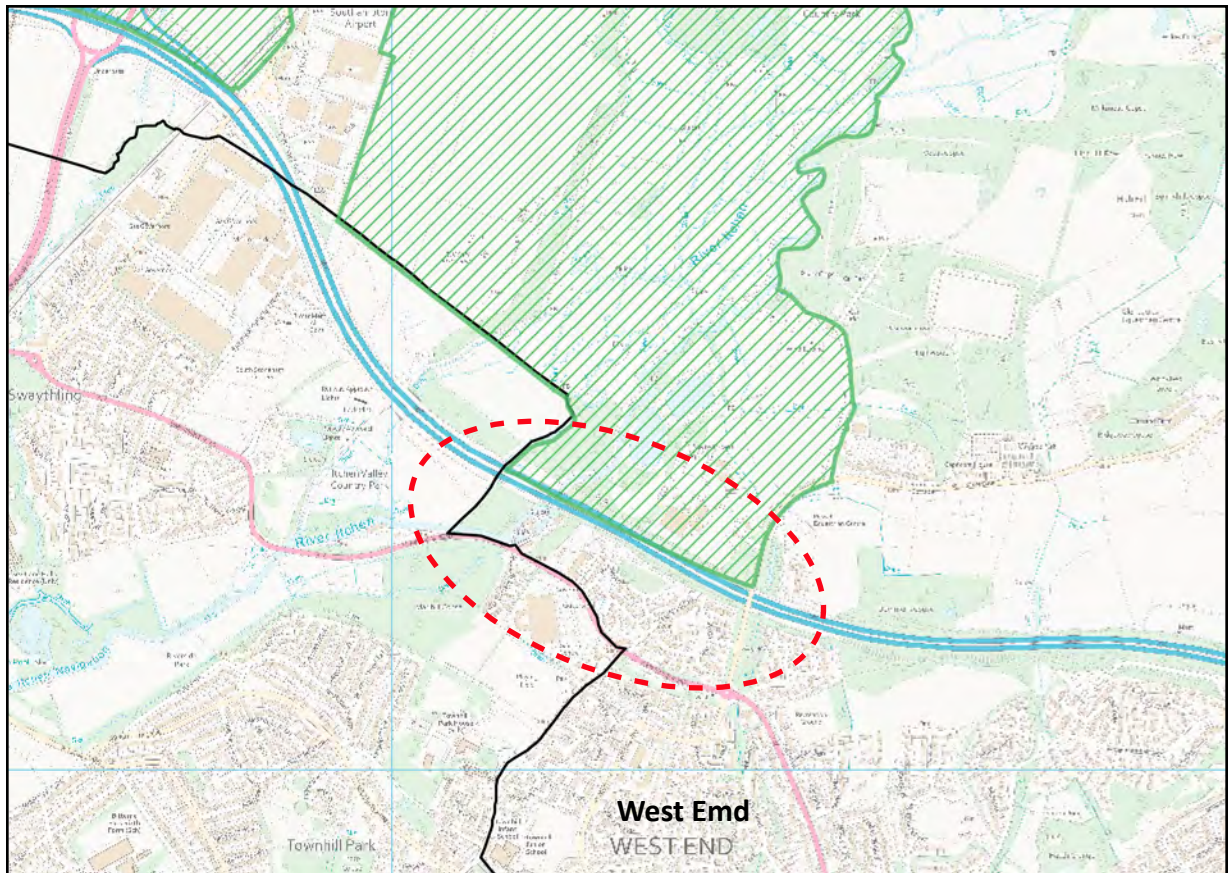
Mod Reference:  
PM3

Date:  
April 2021


**Submission Plan Location**



**Proposed modifications to the Policies Map**



© Crown copyright and database rights (2019) Ordnance Survey (LA100019622)

 Area to be deleted


**EASTLEIGH**  
BOROUGH COUNCIL

Strategy Services

Title

**Modifications to Policies Map**

Policy S6 - Amend Countryside Gaps (See MM27) Map 6

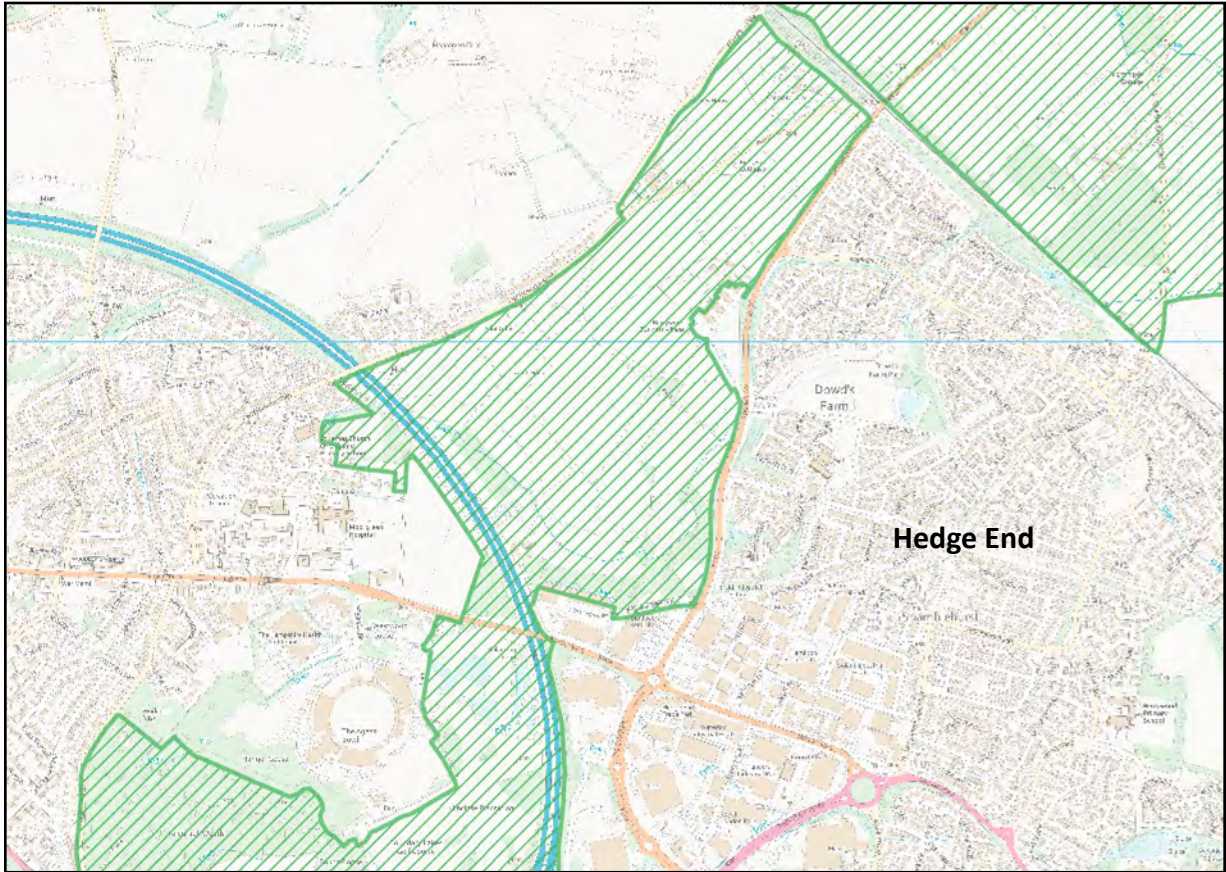


Scale:  
Not to Scale

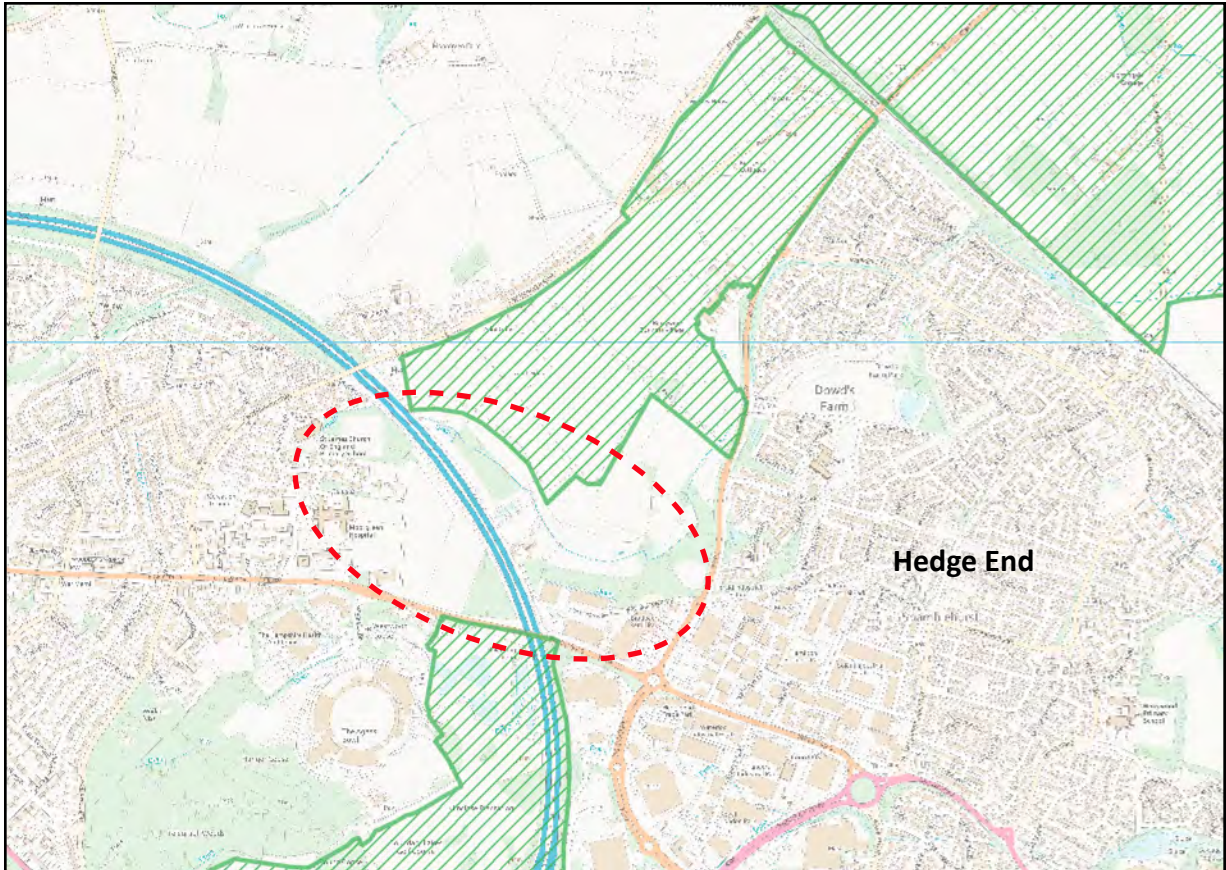
Mod Reference:  
PM3

Date:  
April 2021


**Submission Plan Location**



**Proposed modifications to the Policies Map**



© Crown copyright and database rights (2019) Ordnance Survey (LA100019622)

 Area to be deleted




**EASTLEIGH**  
BOROUGH COUNCIL

Strategy Services

Title

**Modifications to Policies Map**

Policy S6 - Amend Countryside Gaps (See MM27) Map 7

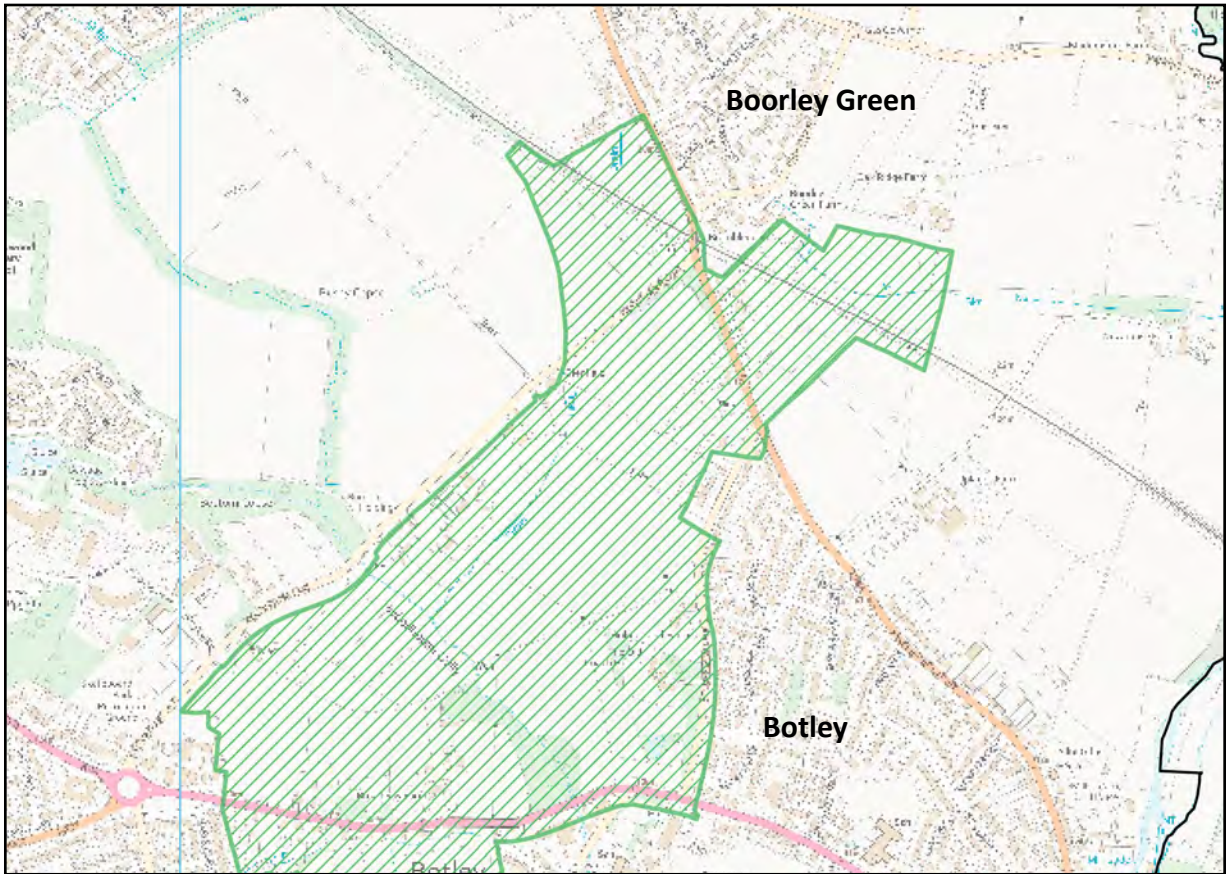


Scale:  
Not to Scale

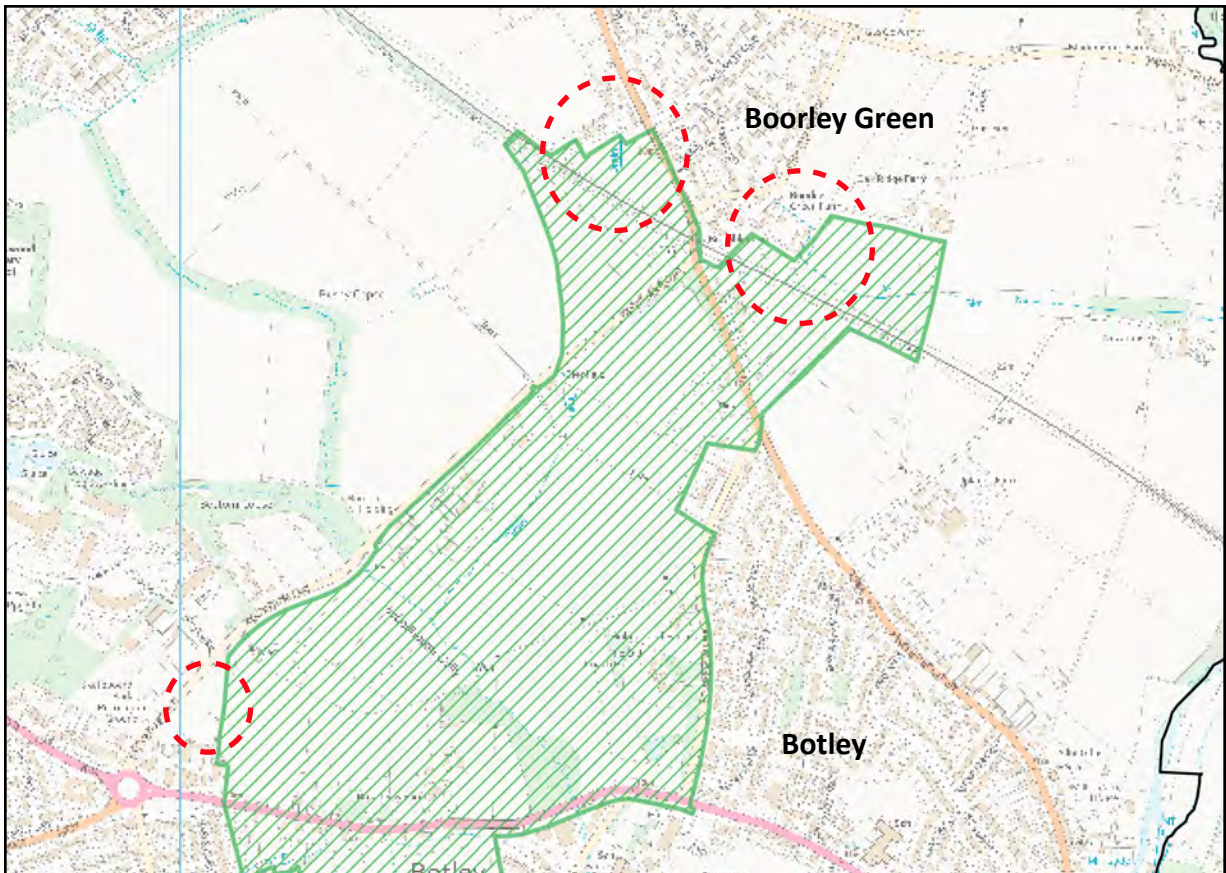
Mod Reference:  
PM3


Date:  
April 2021

**Submission Plan Location**



**Proposed modifications to the Policies Map**



 Area to be deleted

© Crown copyright and database rights (2019) Ordnance Survey (LA100019622)




**EASTLEIGH**  
BOROUGH COUNCIL

Strategy Services

Title

**Modifications to Policies Map**

Policy S6 - Amend Countryside Gaps (See MM27) Map 8

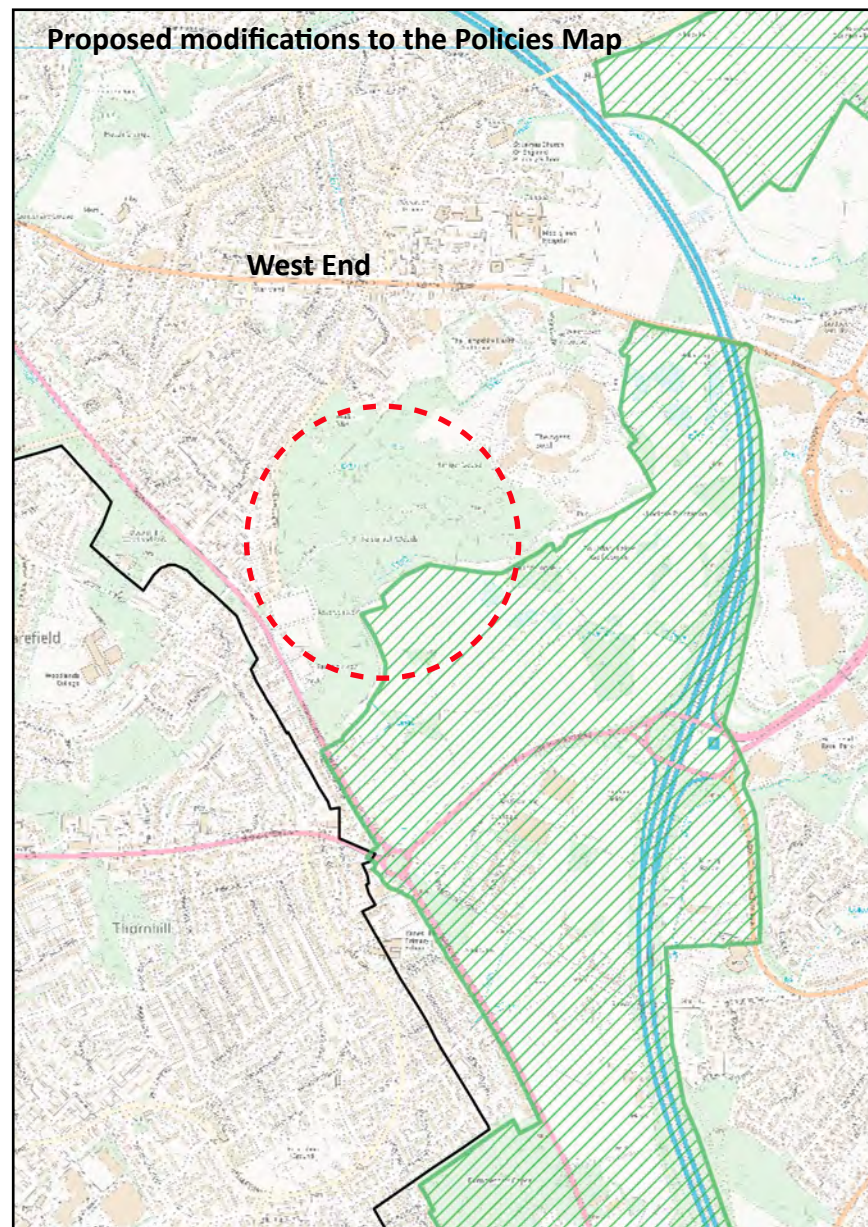
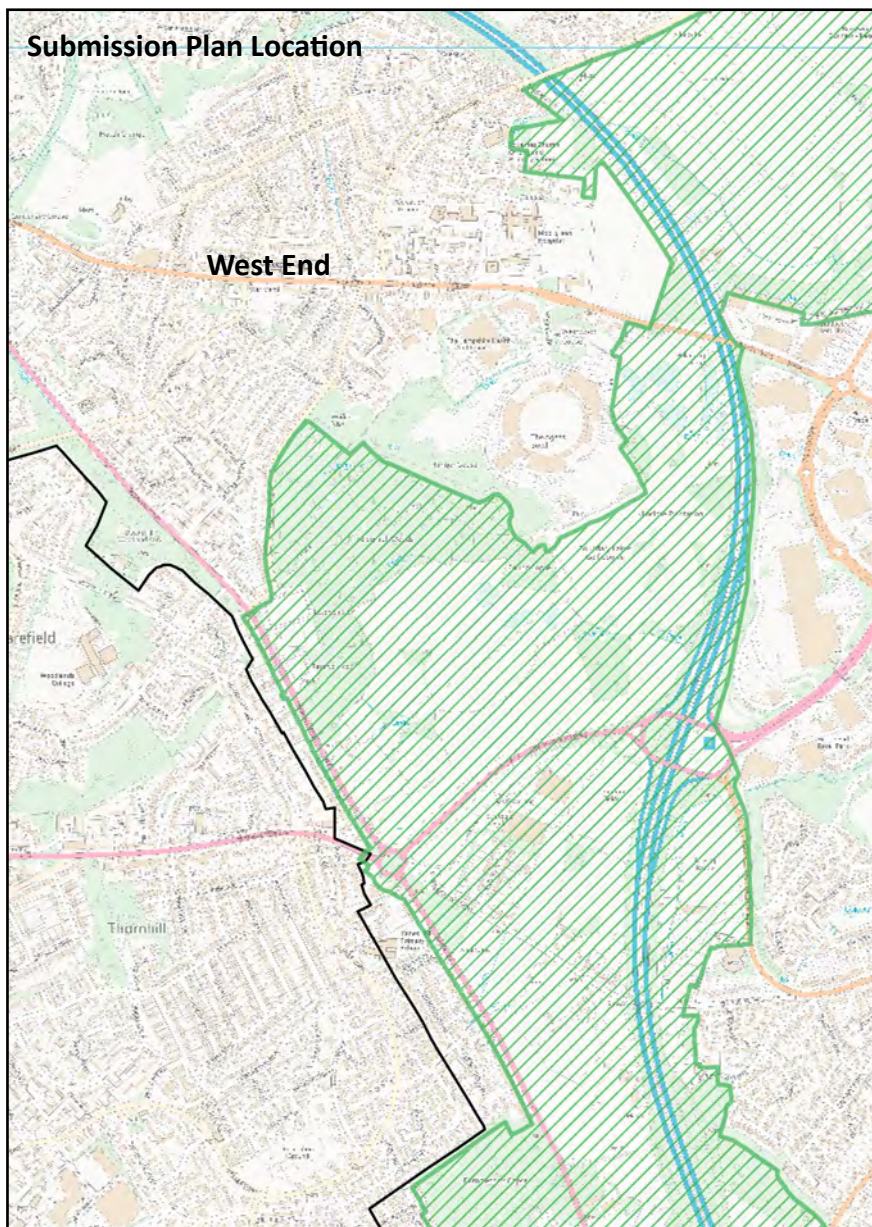


Scale:  
Not to Scale

Mod Reference:  
PM3

Date:  
April 2021





© Crown copyright and database rights (2019) Ordnance Survey (LA100019622)



Strategy Services

Title

**Modifications to Policies Map**

Policy S6 - Amend Countryside Gaps (See MM27) Map 9



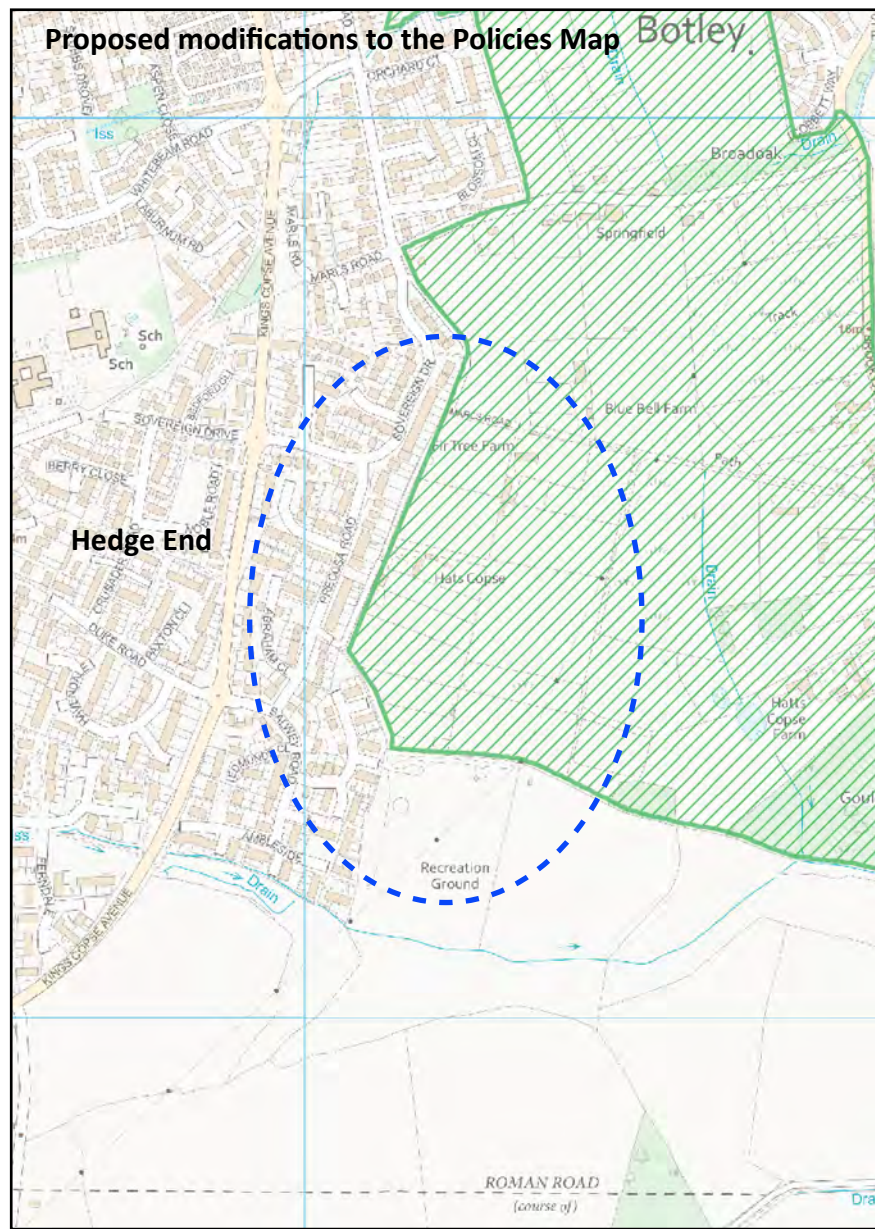
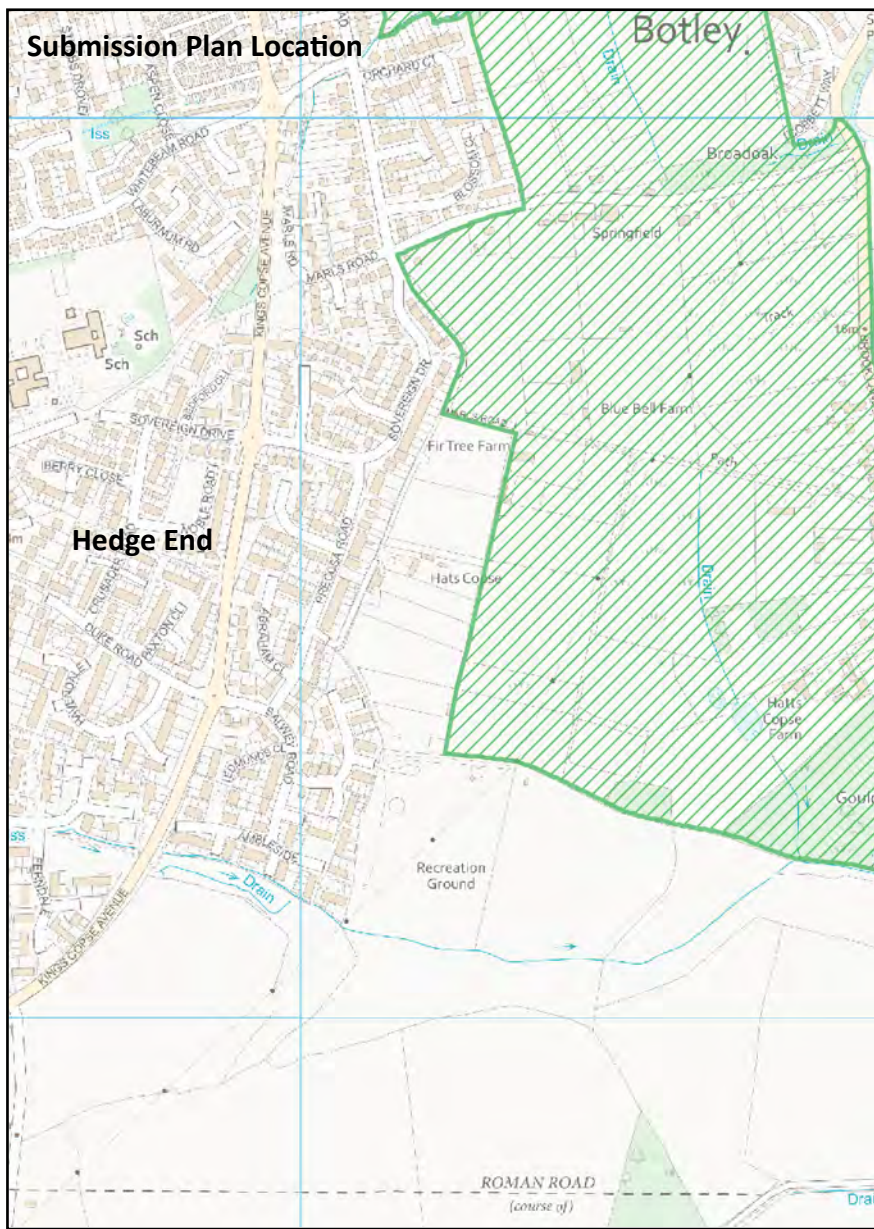
Area to be deleted



Scale:  
Not to Scale

Mod Reference:  
PM3

Date:  
April 2021



© Crown copyright and database rights (2019) Ordnance Survey (LA100019622)



Strategy Services

Title

**Modifications to Policies Map**

Policy S6 - Amend Countryside Gaps (See MM27) Map 10



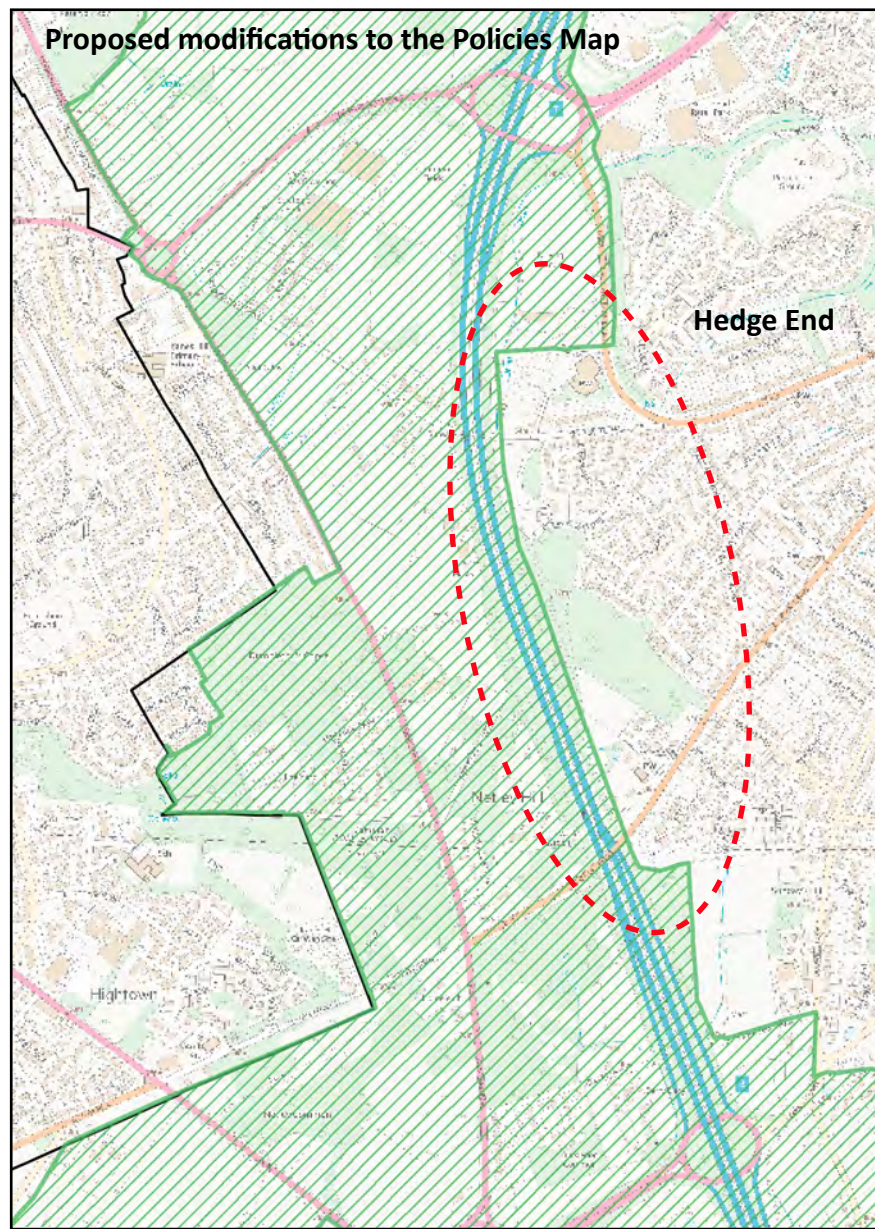
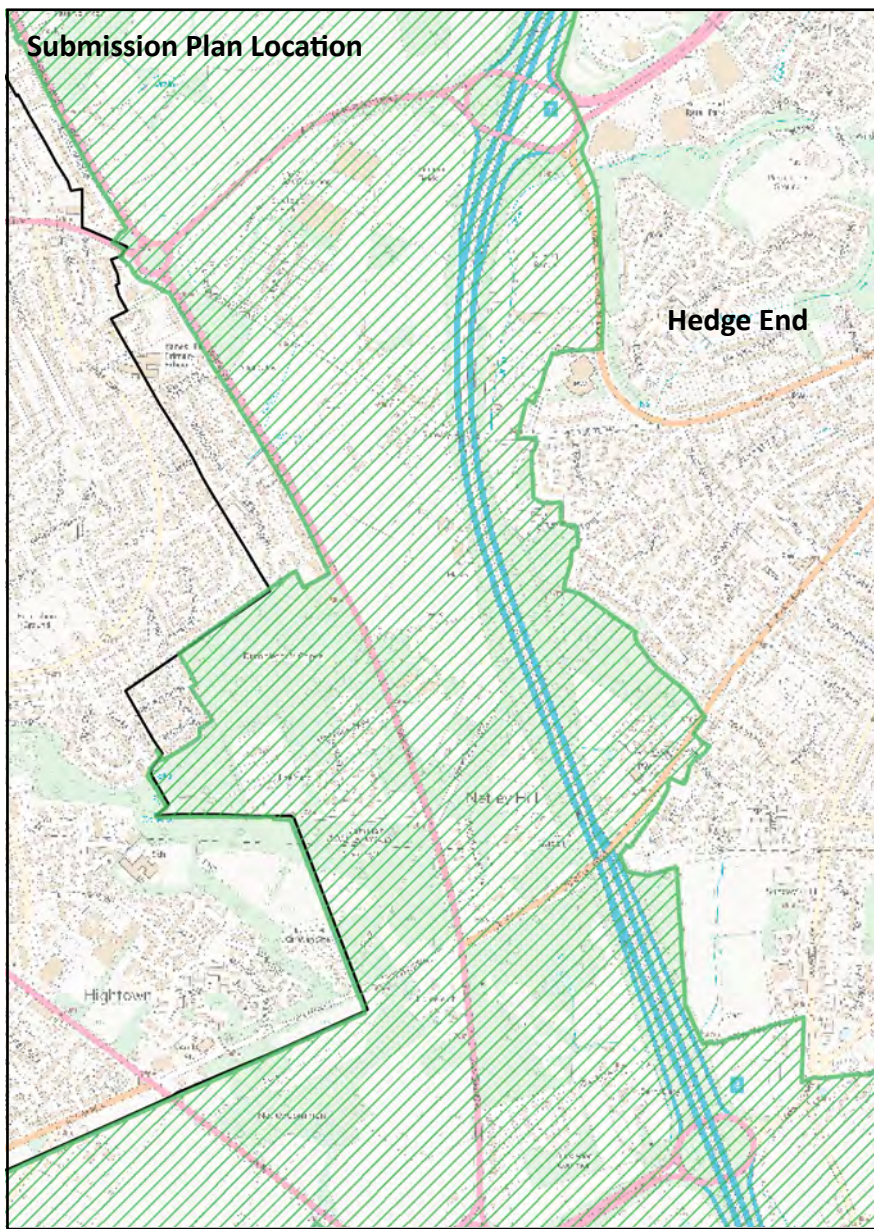
Area to be added



Scale:  
Not to Scale

Mod Reference:  
PM3

Date:  
April 2021



© Crown copyright and database rights (2019) Ordnance Survey (LA100019622)



Strategy Services

Title

**Modifications to Policies Map**

Policy S6 - Amend Countryside Gaps (See MM27) Map 11



Area to be deleted

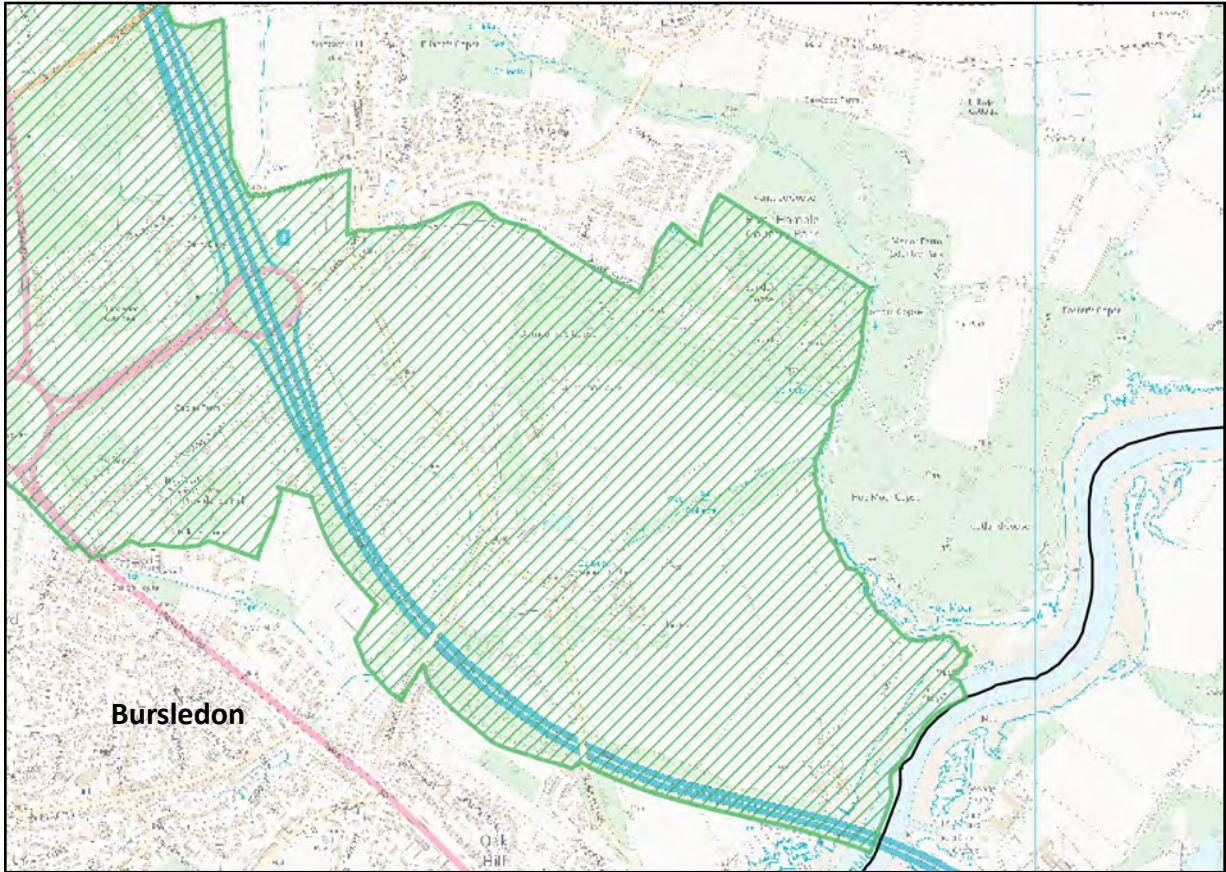


Scale:  
Not to Scale

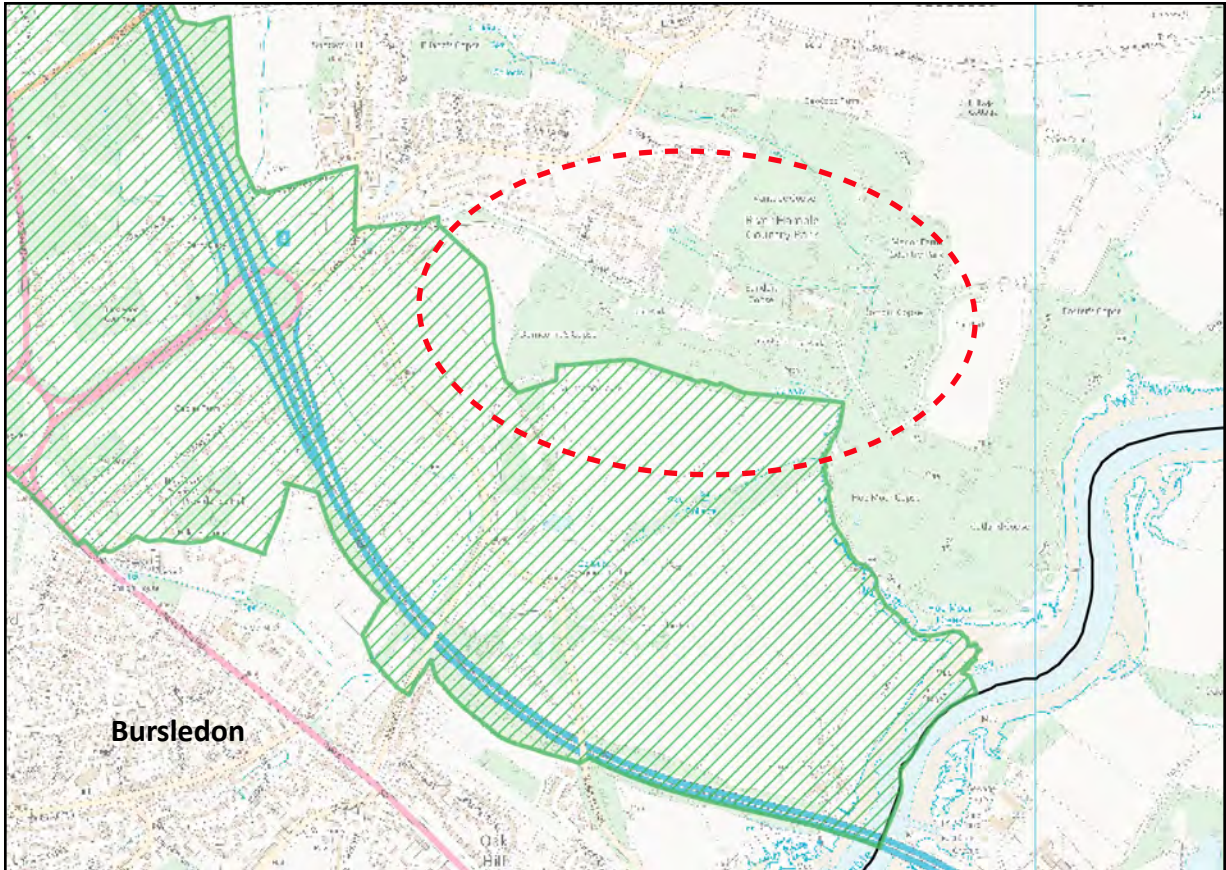
Mod Reference:  
PM3


Date:  
April 2021

**Submission Plan Location**



**Proposed modifications to the Policies Map**



 Area to be deleted

© Crown copyright and database rights (2019) Ordnance Survey (LA100019622)




**EASTLEIGH**  
BOROUGH COUNCIL

Strategy Services

Title

**Modifications to Policies Map**

Policy S6 - Amend Countryside Gaps (See MM27) Map 12

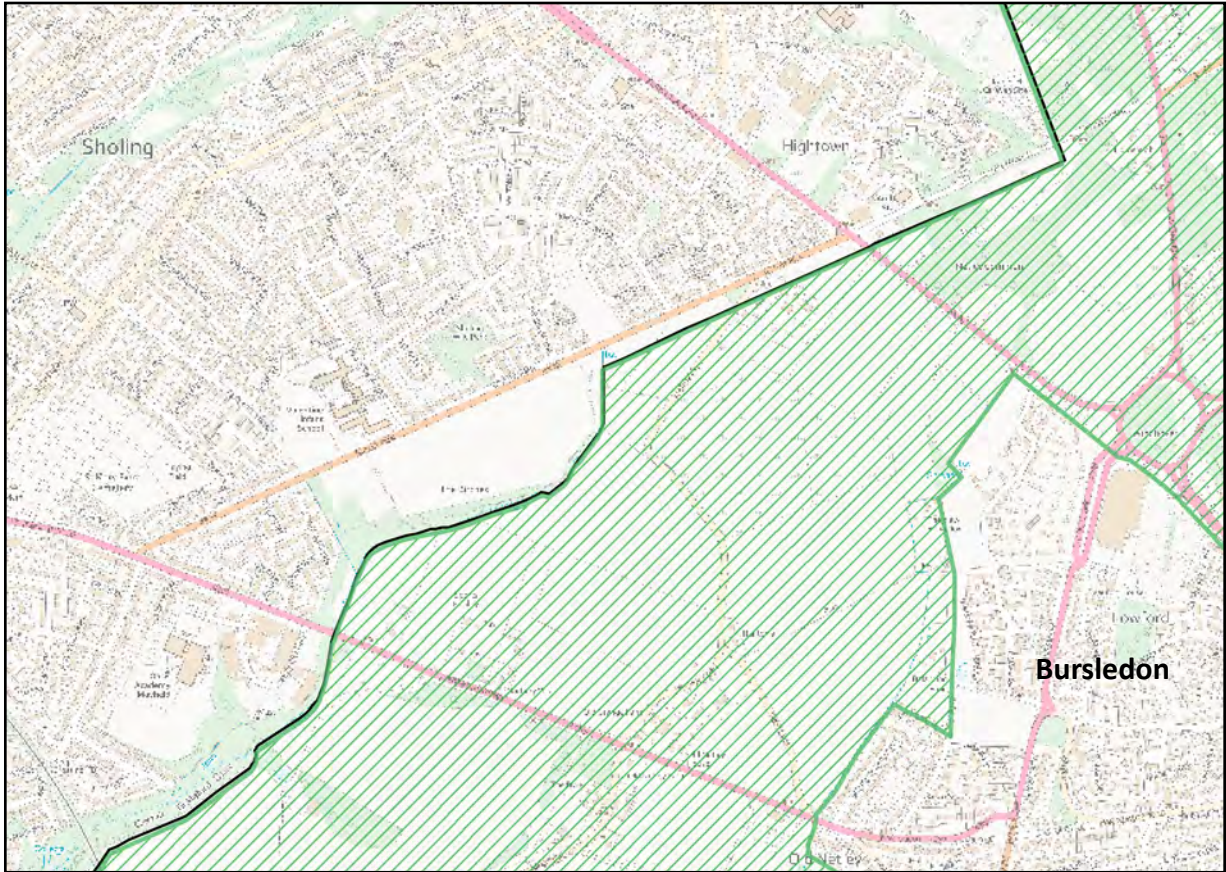


Scale:  
Not to Scale

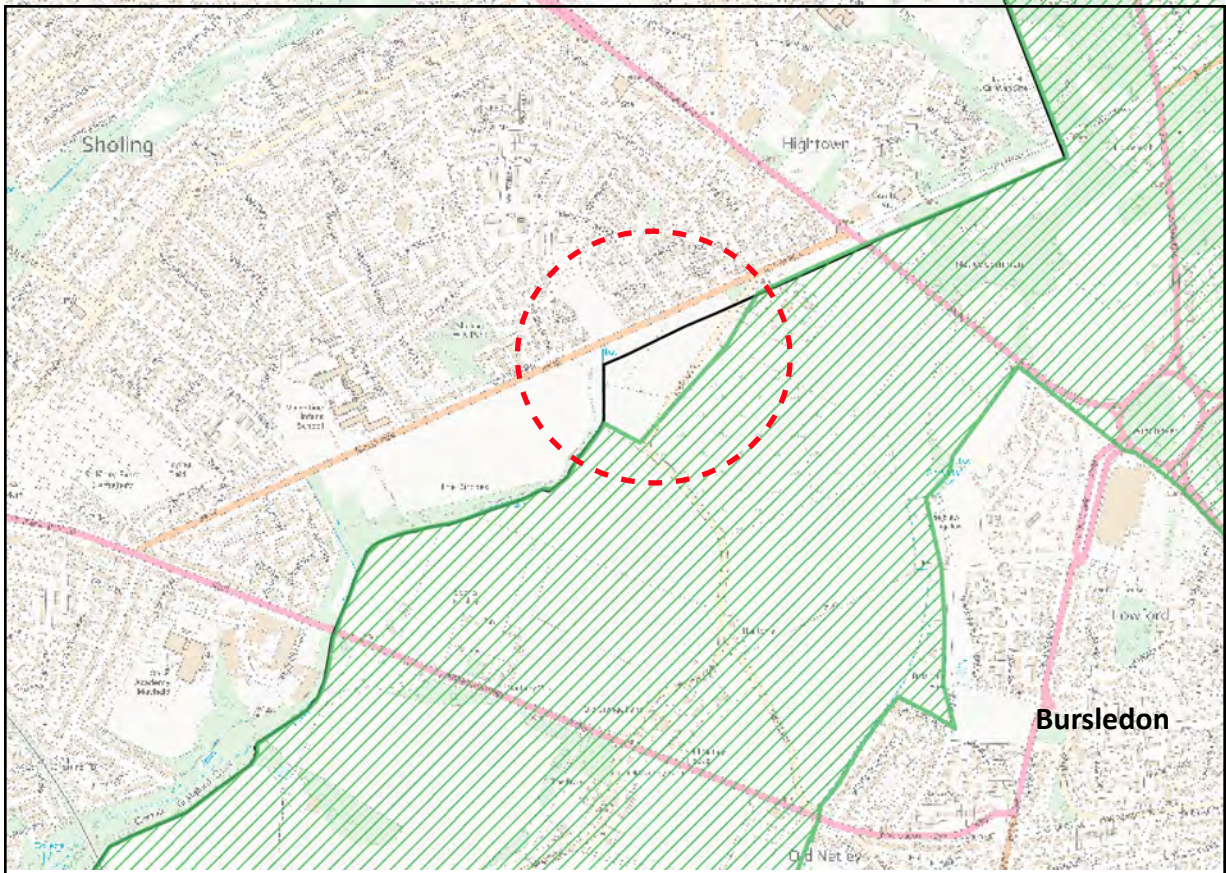
Mod Reference:  
PM3

Date:  
April 2021


**Submission Plan Location**



**Proposed modifications to the Policies Map**



© Crown copyright and database rights (2019) Ordnance Survey (LA100019622)

 Area to be deleted




**EASTLEIGH**  
BOROUGH COUNCIL

Strategy Services

Title

**Modifications to Policies Map**

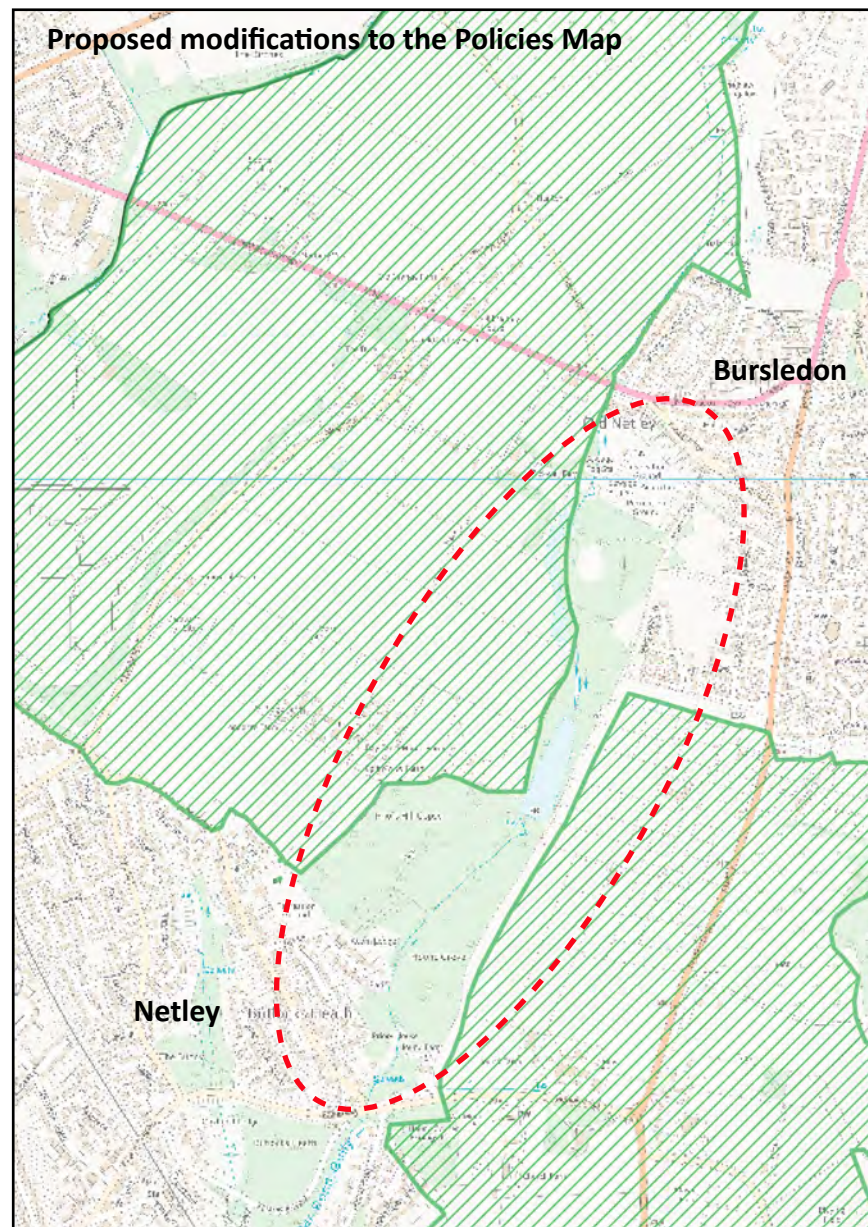
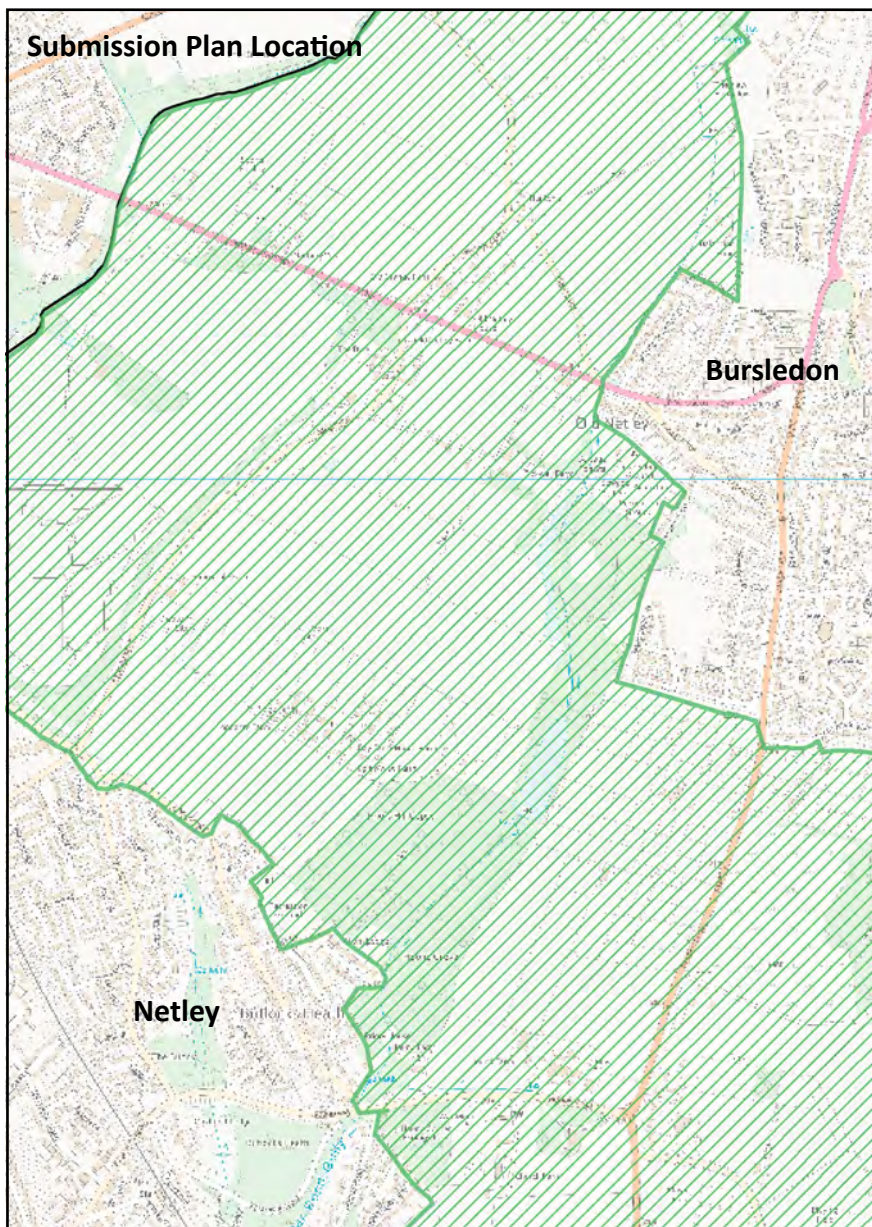
Policy S6 - Amend Countryside Gaps (See MM27) Map 13



Scale:  
Not to Scale

Mod Reference:  
PM3

Date:  
April 2021



© Crown copyright and database rights (2019) Ordnance Survey (LA100019622)



Strategy Services

Title

**Modifications to Policies Map**

Policy S6 - Amend Countryside Gaps (See MM27) Map 14



Area to be deleted

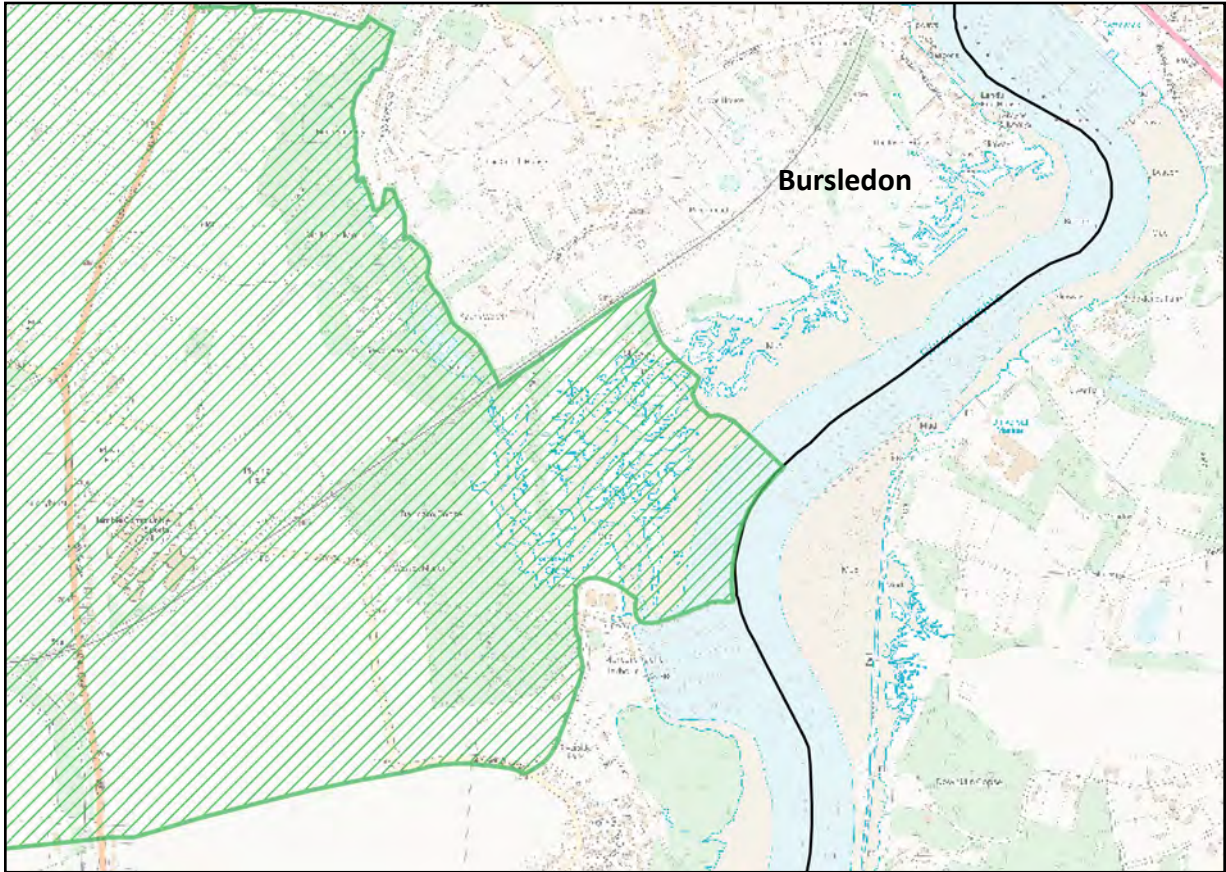


Scale:  
Not to Scale

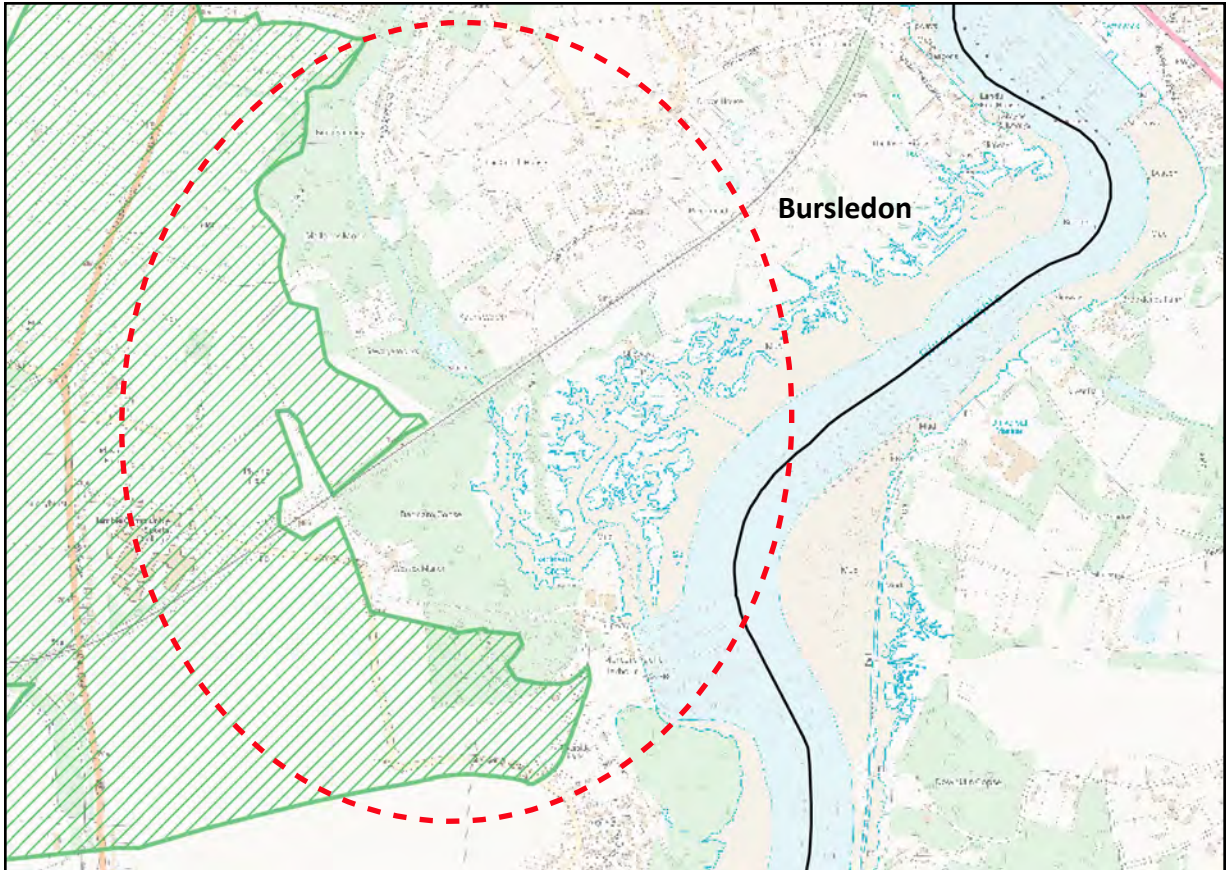
Mod Reference:  
PM3


Date:  
April 2021

**Submission Plan Location**



**Proposed modifications to the Policies Map**



 Area to be deleted

© Crown copyright and database rights (2019) Ordnance Survey (LA100019622)




**EASTLEIGH**  
BOROUGH COUNCIL

Strategy Services

Title

**Modifications to Policies Map**

Policy S6 - Amend Countryside Gaps (See MM27) Map 15

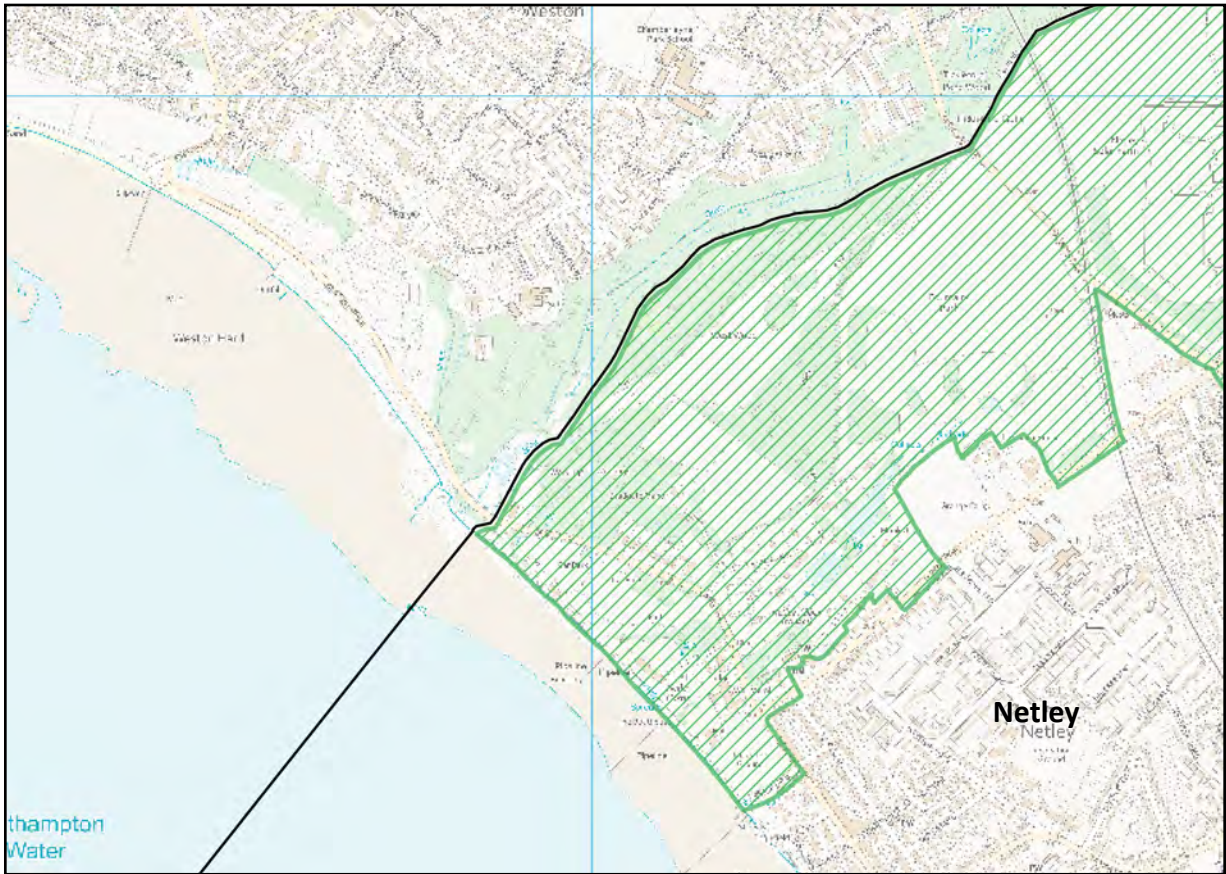


Scale:  
Not to Scale

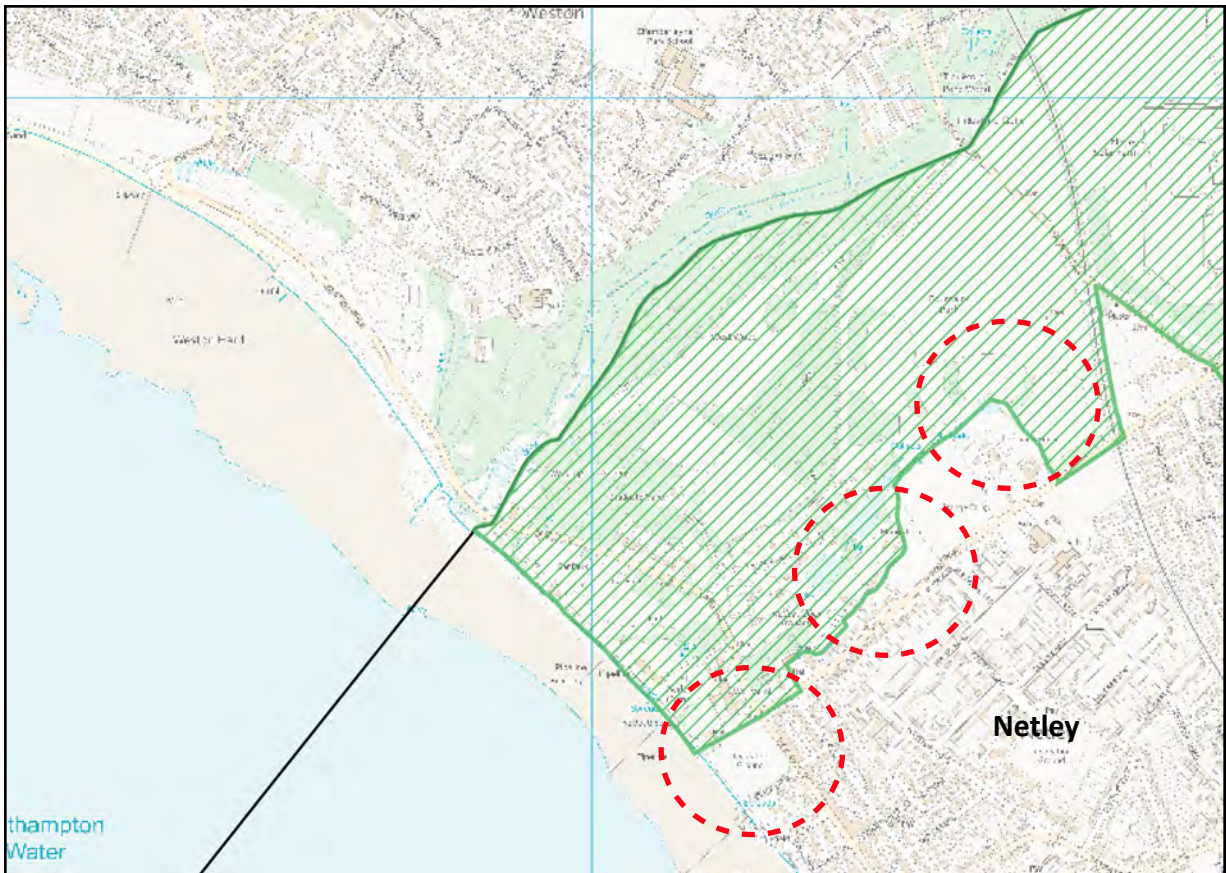
Mod Reference:  
PM3


Date:  
April 2021

**Submission Plan Location**



**Proposed modifications to the Policies Map**



 Area to be deleted

© Crown copyright and database rights (2019) Ordnance Survey (LA100019622)




**EASTLEIGH**  
BOROUGH COUNCIL

Strategy Services

Title

**Modifications to Policies Map**

Policy S6 - Amend Countryside Gaps (See MM27) Map 16



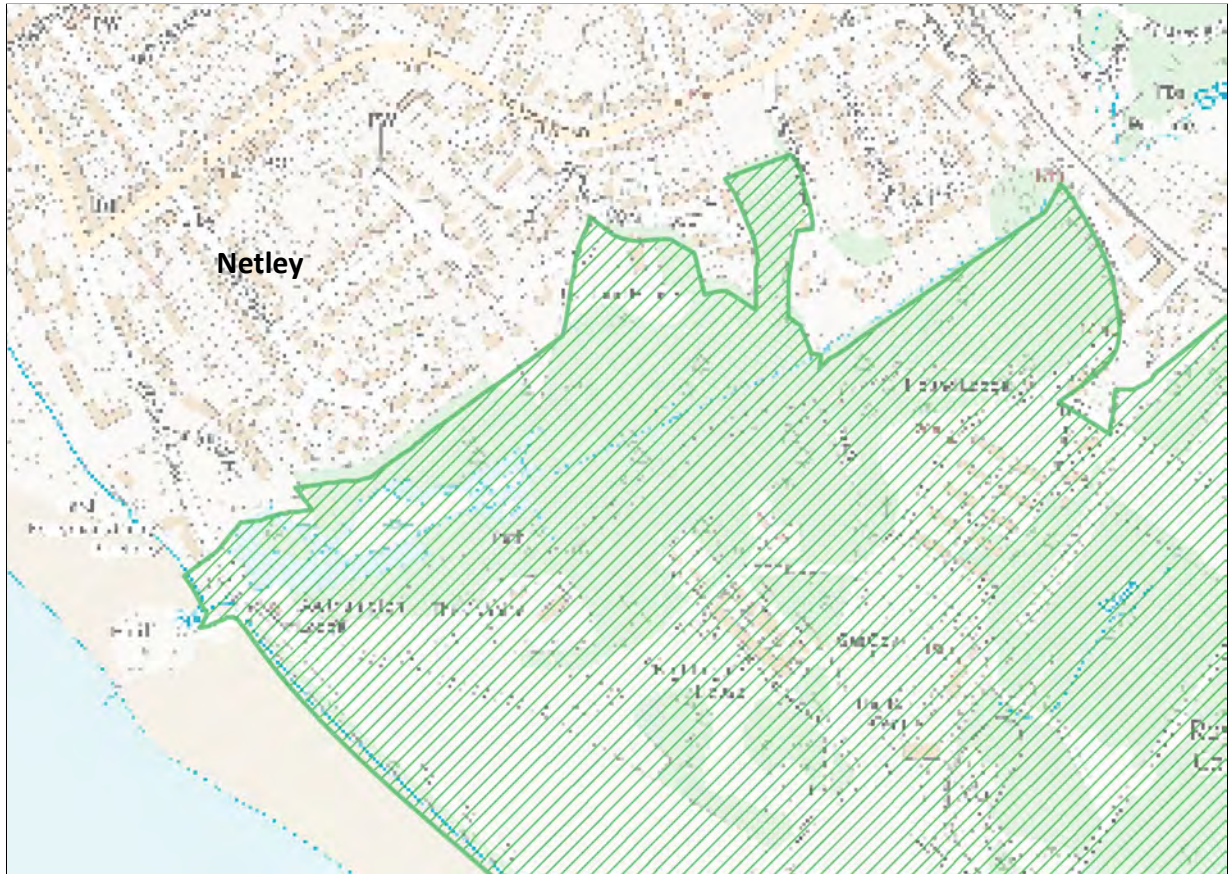
Scale:  
Not to Scale

Mod Reference:  
PM3

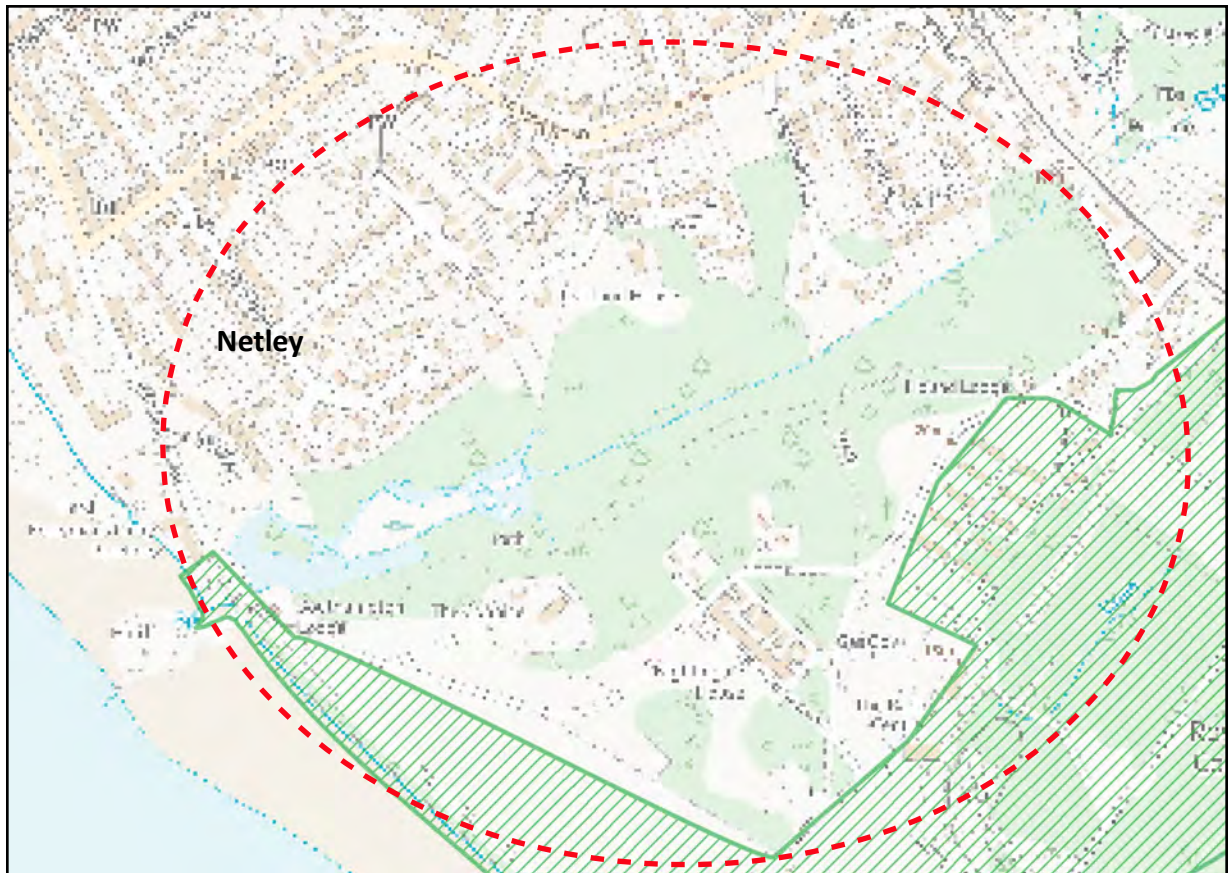
Date:  
April 2021




**Submission Plan Location**



**Proposed modifications to the Policies Map**



© Crown copyright and database rights (2019) Ordnance Survey (LA100019622)

 Area to be deleted




**EASTLEIGH**  
BOROUGH COUNCIL

Strategy Services

Title

**Modifications to Policies Map**

Policy S6 - Amend Countryside Gaps (See MM27) Map 17

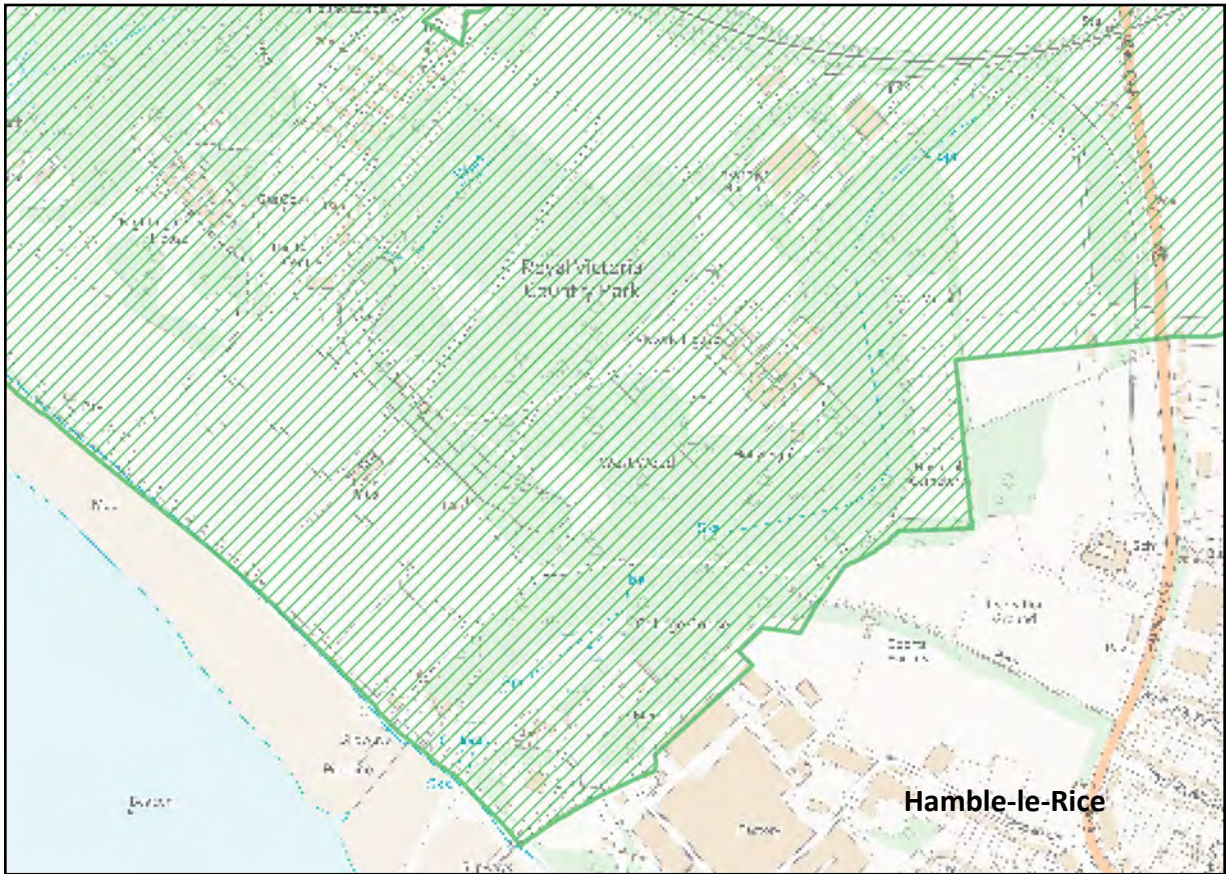


Scale:  
Not to Scale

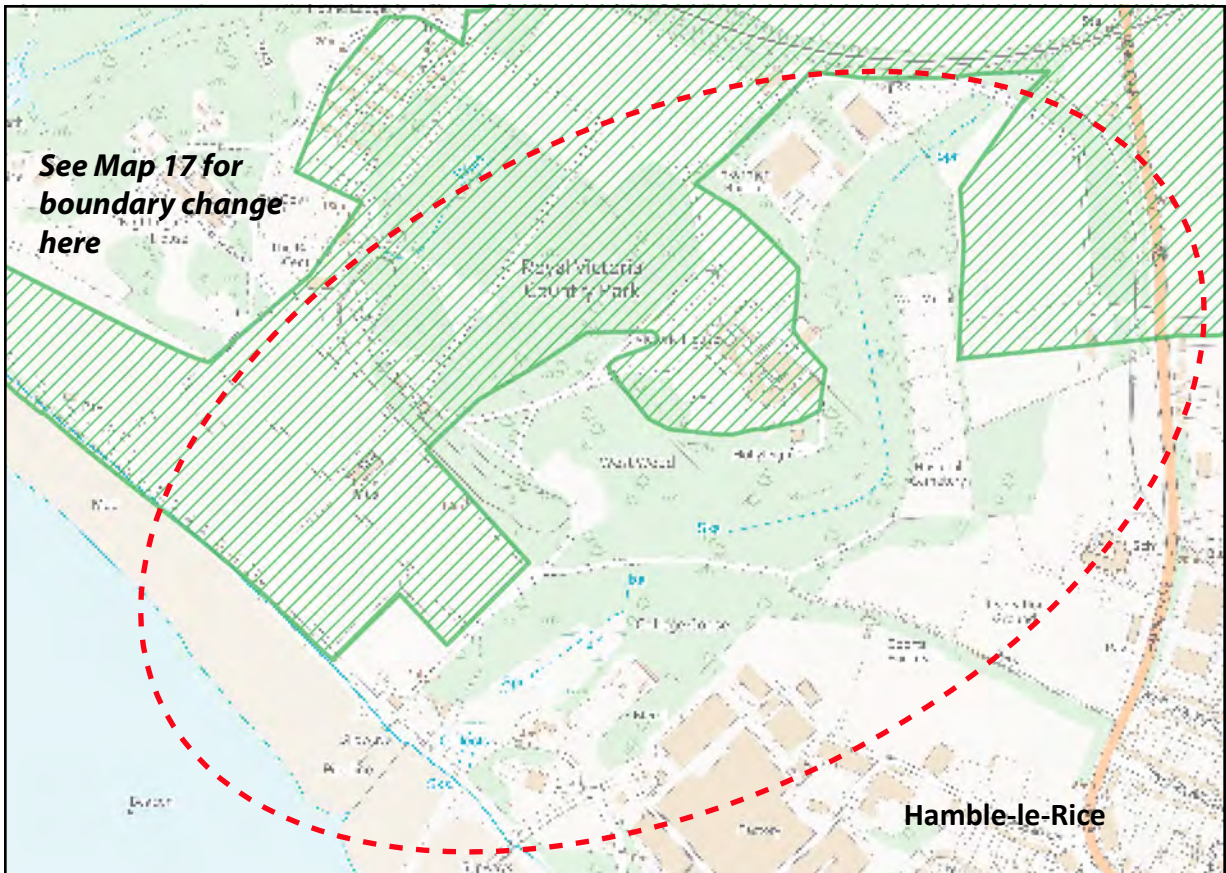
Mod Reference:  
PM3


Date:  
April 2021

**Submission Plan Location**



**Proposed modifications to the Policies Map**



 Area to be deleted

© Crown copyright and database rights (2019) Ordnance Survey (LA100019622)




**EASTLEIGH**  
BOROUGH COUNCIL

Strategy Services

Title

**Modifications to Policies Map**

Policy S6 - Amend Countryside Gaps (See MM27) Map 18

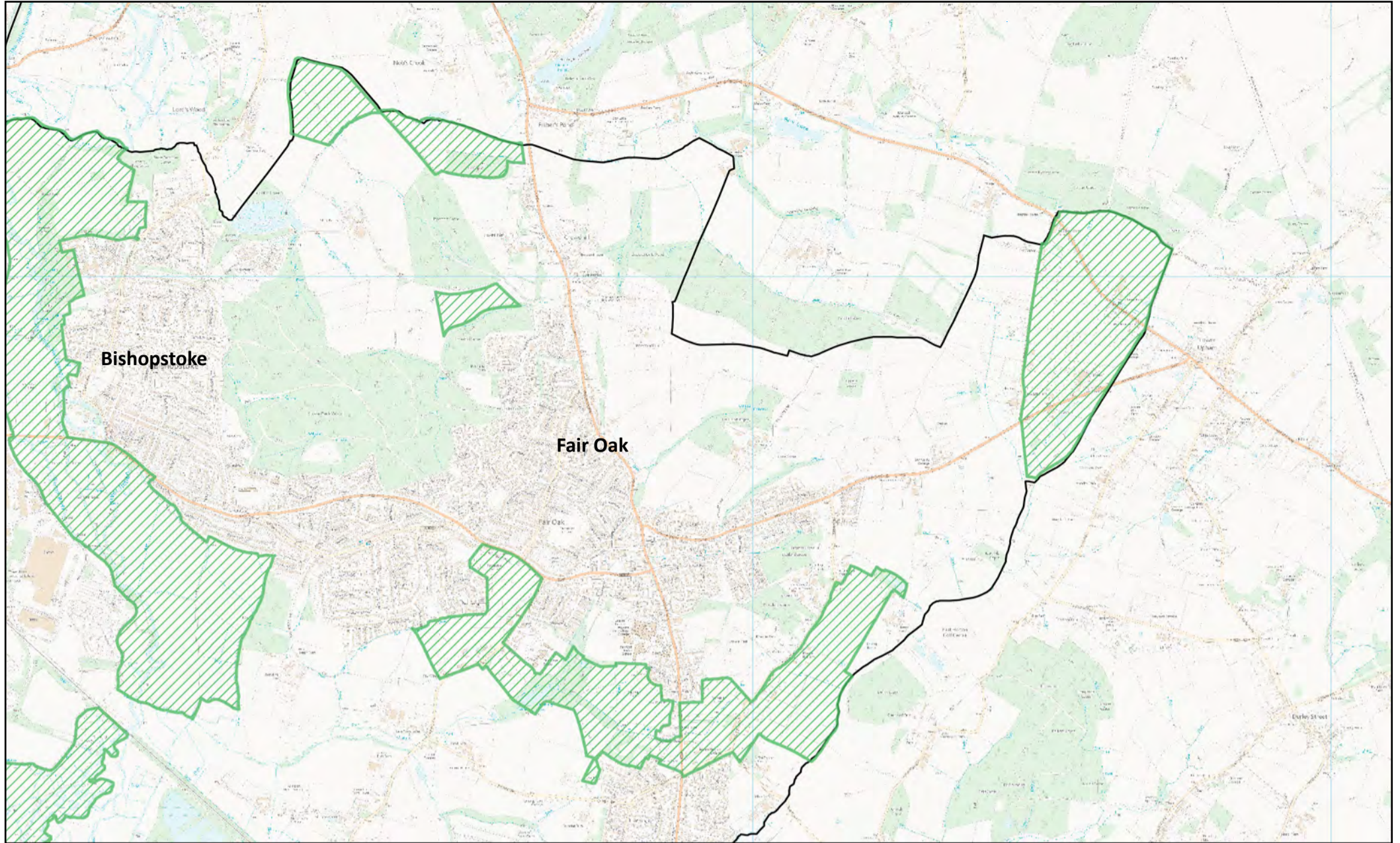


Scale:  
Not to Scale

Mod Reference:  
PM3

Date:  
April 2021

**Submission Plan Location**



**Proposed modifications to the Policies Map**

