

© Crown copyright and database rights (2019) Ordnance Survey (LA100019622)



Strategy Services

Title

**Main Modifications to the Policies Map**

Existing Open Space, Horton Heath

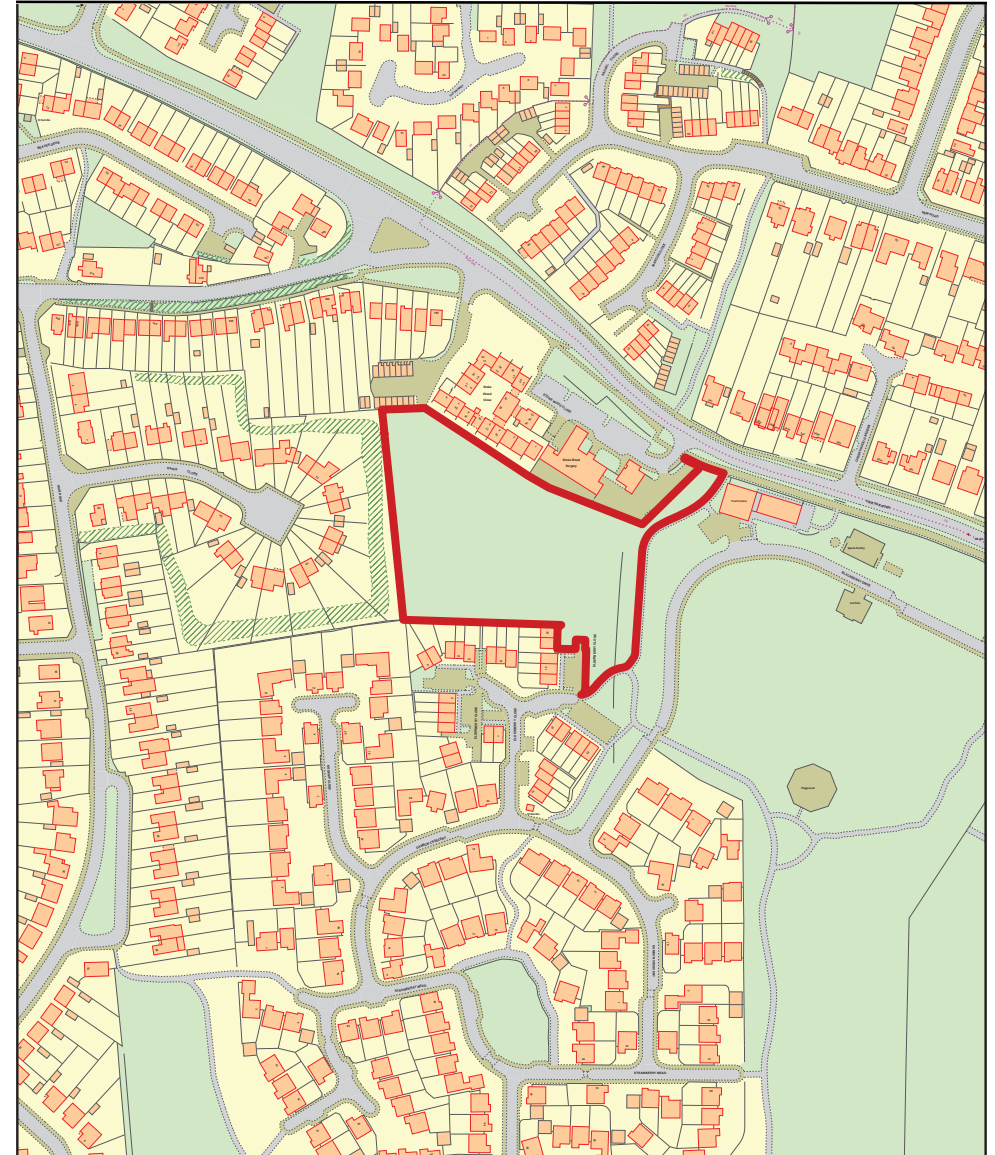
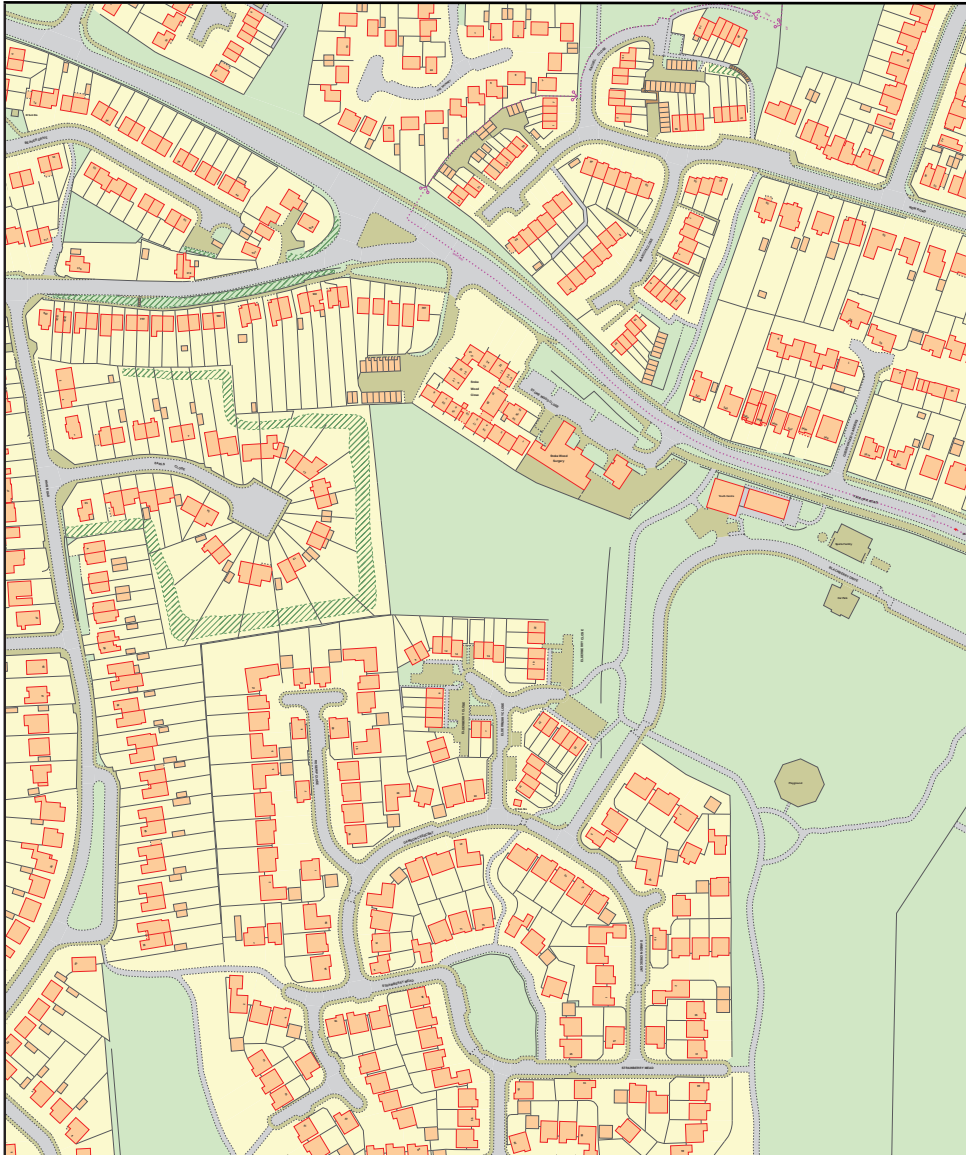


Scale:  
Not to Scale

Mod Reference:  
PM18

Date:  
July 2019





© Crown copyright and database rights (2019) Ordnance Survey (LA100019622)



Strategy Services

Title

**Main Modifications to the Policies Map**

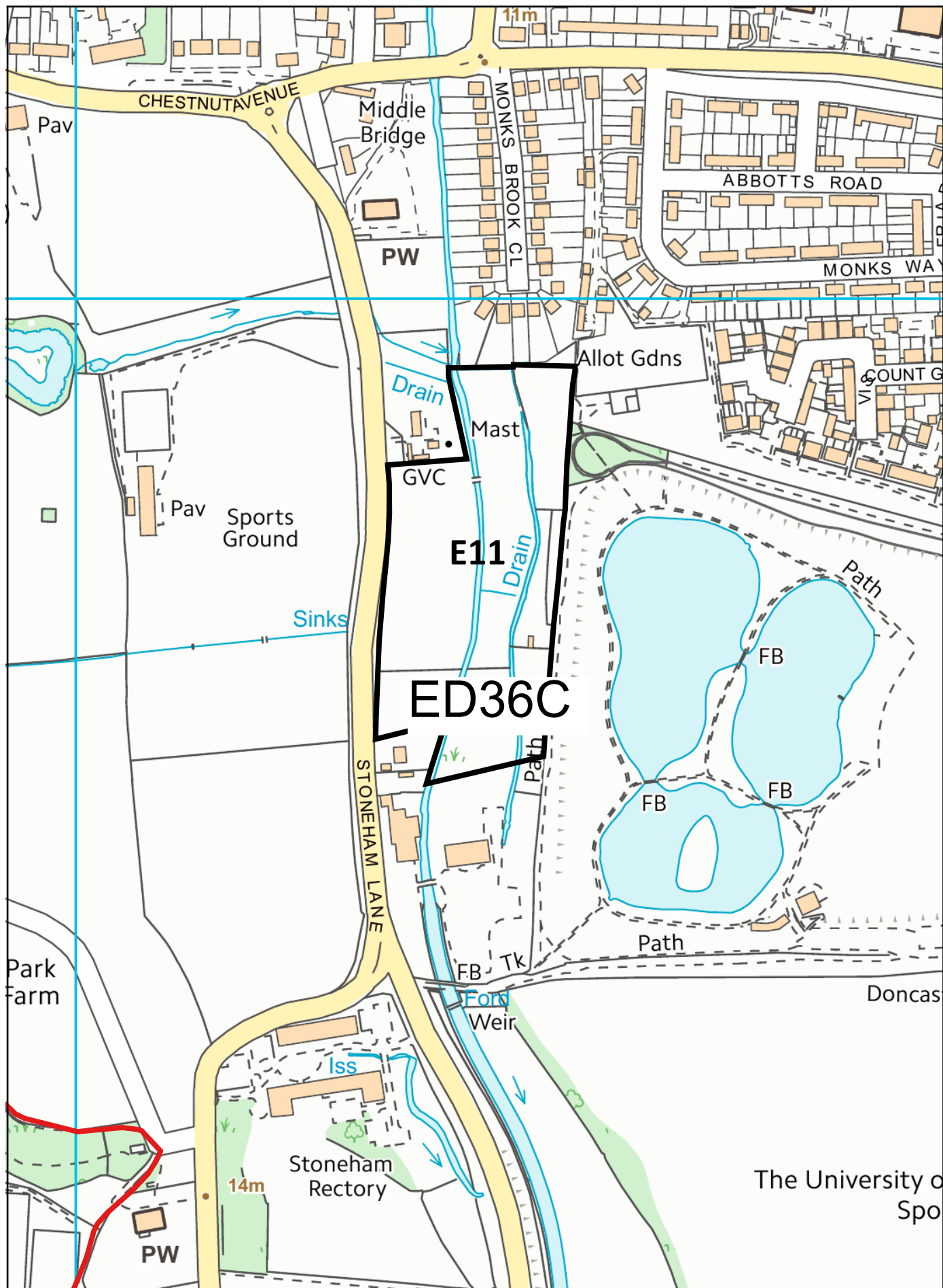
Policy Bi1, Stokewood Surgery, Fair Oak



Scale:  
Not to Scale

Mod Reference:  
PM18

Date:  
July 2019



© Crown copyright and database rights (2019) Ordnance Survey (LA100019622)



Strategy Services

Title

Main Modifications to the Policies Map

Policy E11, Extension of Lakeside Country Park

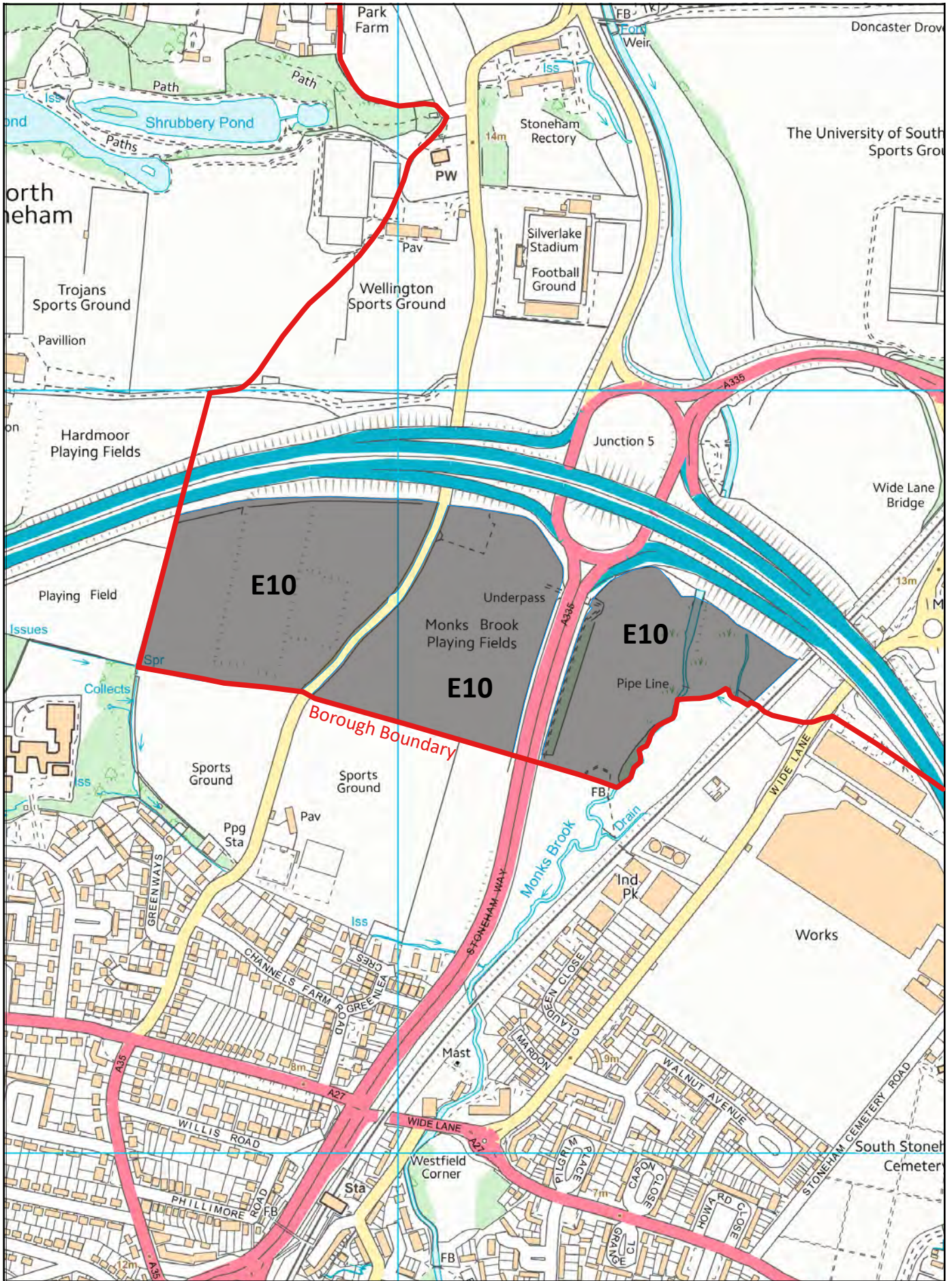


Scale:  
1:2500

Mod Reference:  
PM18

Date:  
July 2019

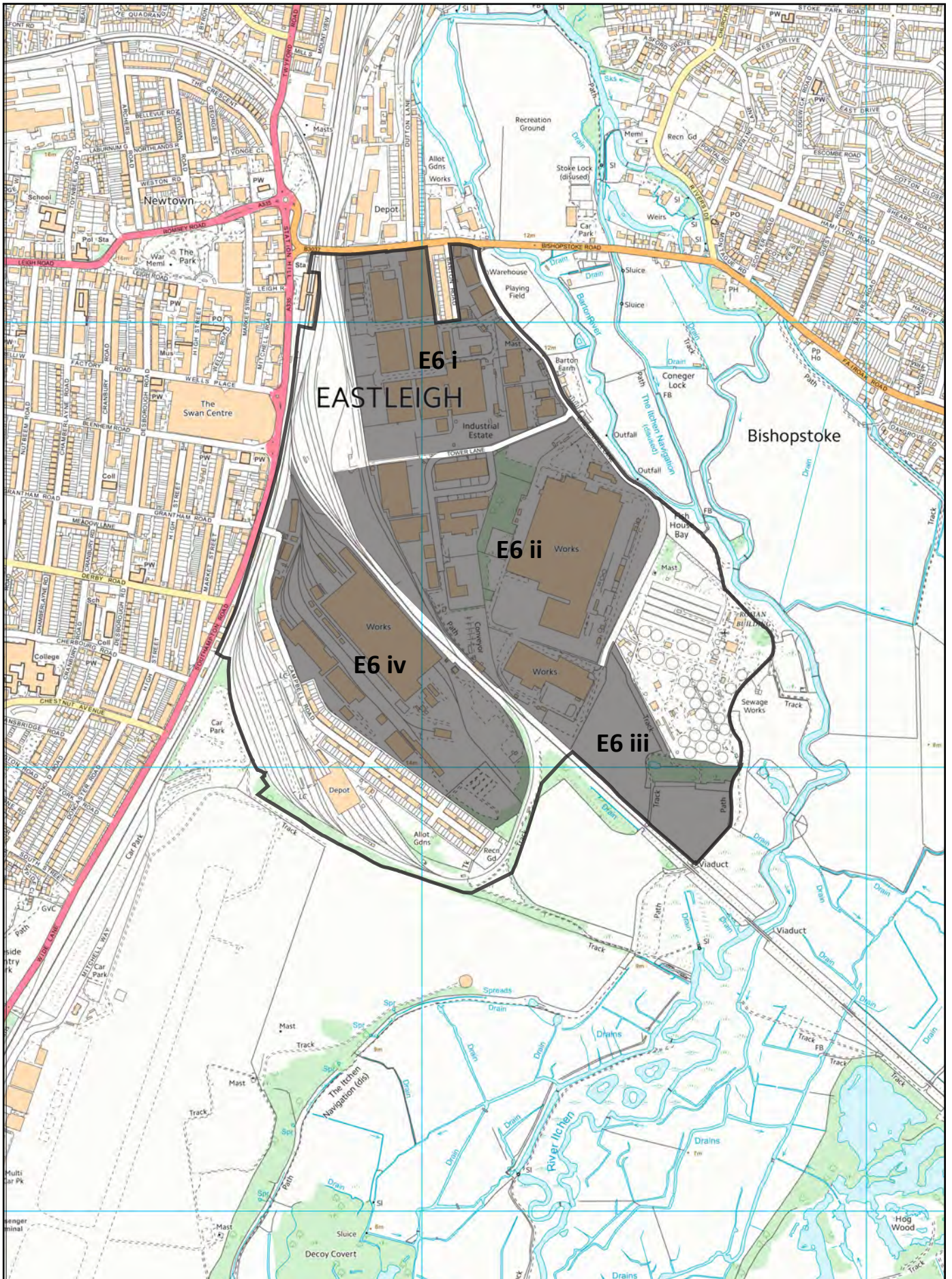




© Crown copyright and database rights (2019) Ordnance Survey (LA100019622)







© Crown copyright and database rights (2019) Ordnance Survey (LA100019622)

**EASTLEIGH**  
BOROUGH COUNCIL

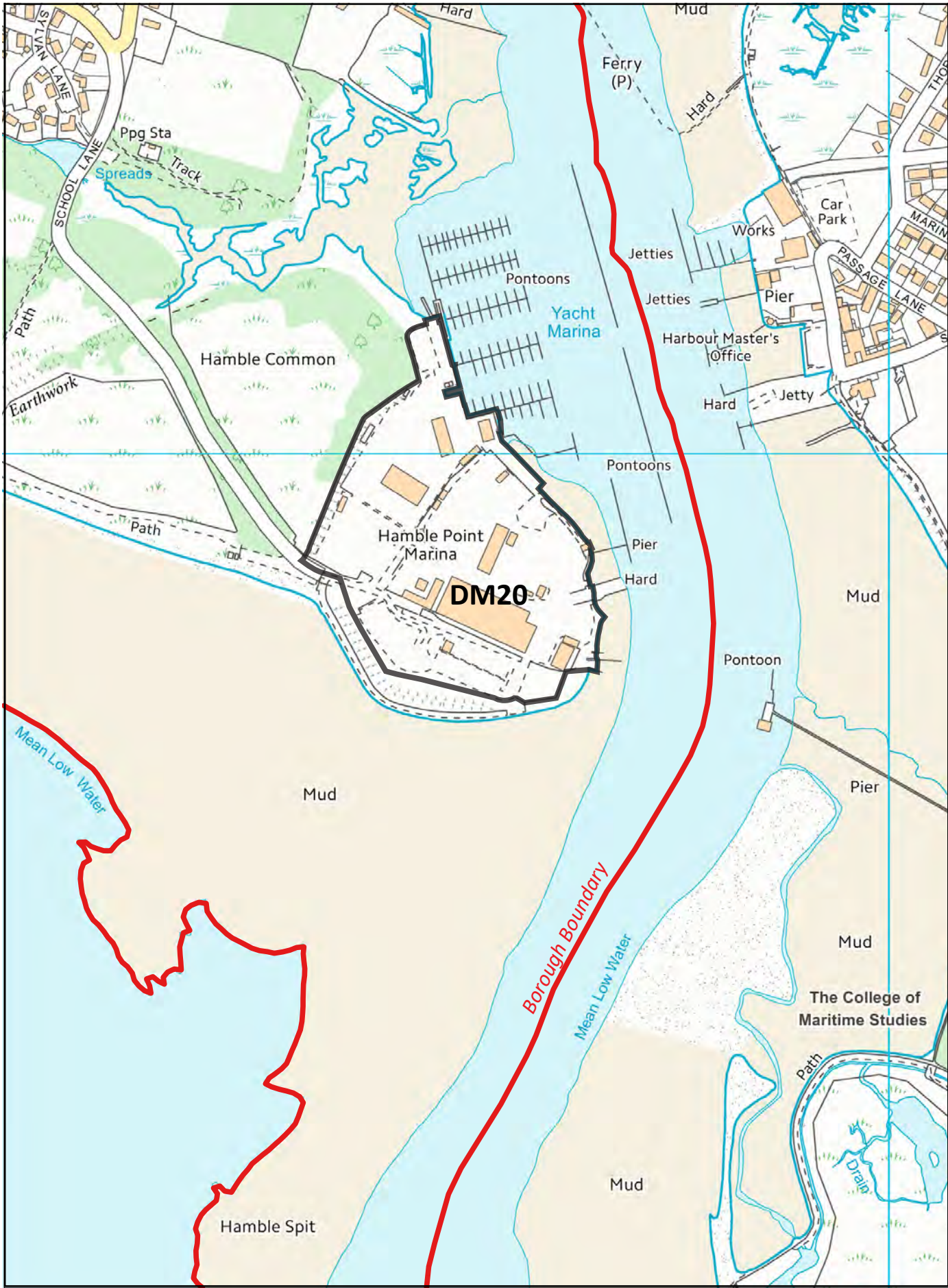
Strategy Services

Title  
**Main Modifications to the Policies Map**  
Policy E6, Eastleigh River Side



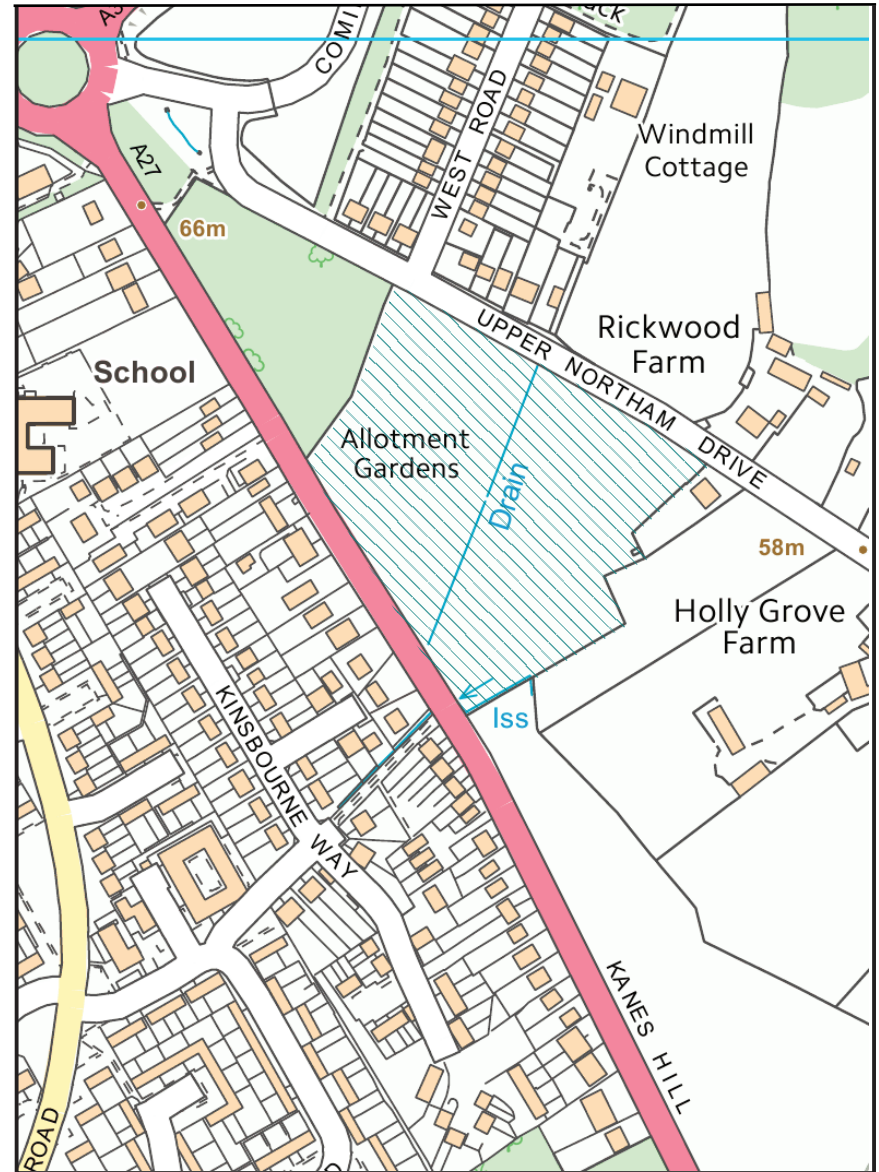
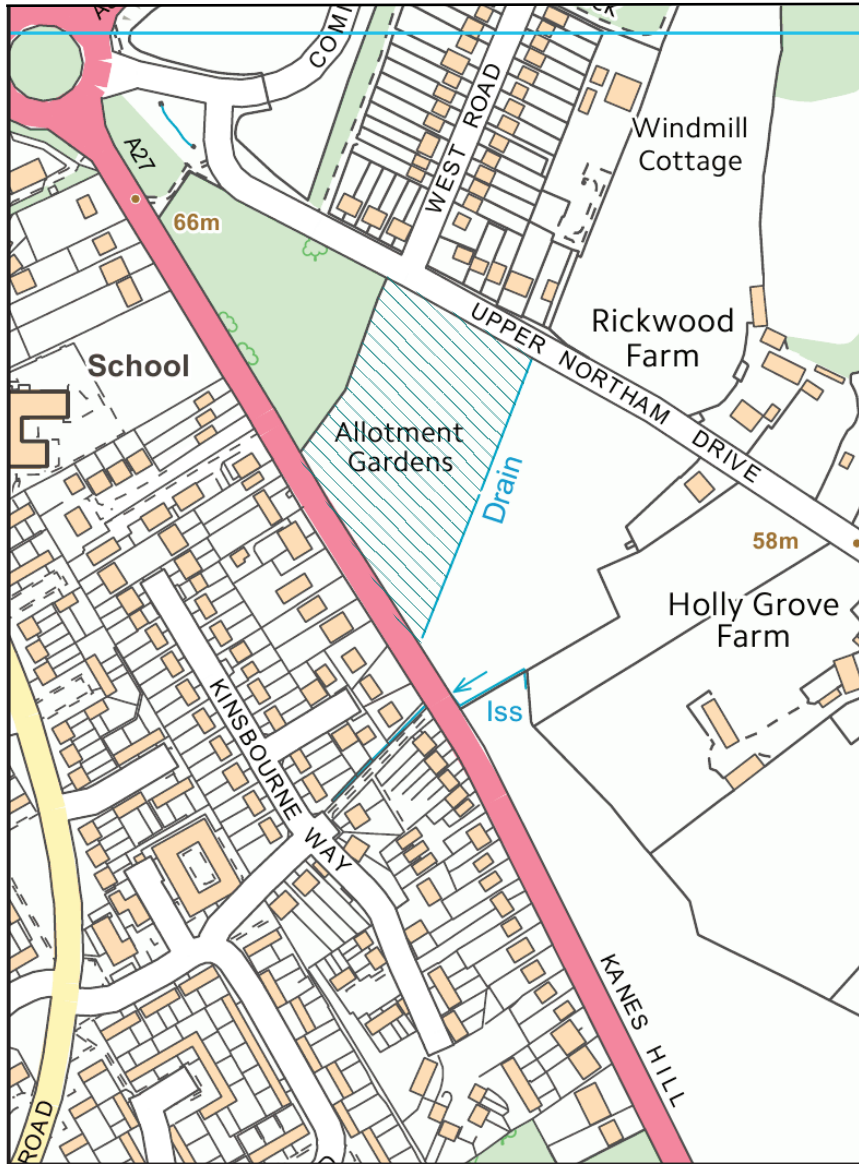
Scale:  
1:2500  
Mod Reference:  
PM18  
Date:  
July 2019





© Crown copyright and database rights (2019) Ordnance Survey (LA100019622)





© Crown copyright and database rights (2019) Ordnance Survey (LA100019622)



Strategy Services

Title

**Main Modifications to the Policies Map**

Policy HE7, Existing Open Space



Scale:  
Not to Scale

Mod Reference:  
PM18

Date:  
July 2019

Eastleigh Borough Local Plan 2016-2036

Policies Map (North)

Key:

-  Eastleigh Borough Boundary
-  Urban Edge S2
-  Countryside S7
-  Gap S8
-  HCC Minerals Safeguarding - see Hampshire Minerals & Waste Plan [www.hants.gov.uk/mineralsandwaste](http://www.hants.gov.uk/mineralsandwaste)
-  International Nature Conservation Designation - SAC and/or SPA, Ramsar DM11
-  National Nature Conservation Designation - SSSI DM11
-  Local Nature Conservation Designation - SINC and/or LNR (correct July 2017) DM11
-  Existing Recreation, Allotment and Open Space Facility DM34 & DM35
-  Proposed Open Space (boundary identified) DM35
-  Proposed Housing & Residential-Led Mixed Use Development Allocation S3
-  Strategic Growth Residential-Led Mixed Use Development Area boundary S5
-  Housing Sites & Residential-Led Mixed Use Development with Planning Permission DM24
-  Housing Sites in Urban Areas in Unneighbourly Use to be Redeveloped DM25
-  Existing Employment DM15
-  Proposed Employment S4
-  Eastleigh Town, District and Local Centres and Neighbourhood Parades DM38, E3, DM21 & DM22
-  Proposed District and Local Centre - D = District, L = Local S2
-  Allocated Gypsy, Travellers and Travelling Showpeople Site and Gypsy Site DM33
-  Conservation Area DM12
-  Scheduled Ancient Monument DM12
-  Strategic Footpath/Cycleway/Bridleway S13
-  Proposed Strategic Footpath/Cycleway/Bridleway S13
-  Proposed New Road (Indicative Link Road Route) S6 & S12
-  Long Term Safeguarded Road Route E6
-  Junction Improvements DM13
-  Eastleigh River Side (ERS) E6
-  Former Civic Offices Site E1
-  Southampton Airport E9
-  Airport Public Safety Zone E9
-  Aviary Estate E12
-  Proposed Allotment DM33
-  Proposed Open Space
-  Proposed Housing
-  Proposed School
-  South of Stokewood Surgery B11
-  Environmental Mitigation Area (within SGO)

**Policy Number notation**  
 S4 Strategic  
 DM3 Development Management  
 E5 Local Area -Eastleigh

**Notes:**  
 For full details of the policies and proposals, please see the Eastleigh Borough Local Plan 2016 - 2036 document.



Strategy - Strategic Planning  
 Eastleigh Borough Council  
 Eastleigh House  
 Upper Market Street  
 Eastleigh  
 Hampshire  
 SO50 9YN  
 Tel: 023 8068 8000  
 Web [www.eastleigh.gov.uk](http://www.eastleigh.gov.uk)



Eastleigh Borough Local Plan 2016-2036

Policies Map (South)

Key:

-  Eastleigh Borough Boundary
-  Urban Edge S2
-  Countryside S7
-  Gap S8
-  HCC Minerals Safeguarding - see Hampshire Minerals & Waste Plan [www.hants.gov.uk/mineralsandwaste](http://www.hants.gov.uk/mineralsandwaste)
-  International Nature Conservation Designation - SAC and/or SPA, Ramsar DM11
-  National Nature Conservation Designation - SSSI DM11
-  Local Nature Conservation Designation - SINC and/or LNR (correct at July 2017) DM11
-  Existing Recreation, Allotment and Open Space Facility DM34 & DM35
-  Proposed Open Space (boundary identified) and New Country Park DM31, HO1
-  Proposed Housing & Residential-Led Mixed Use Development Allocation S3
-  Housing Sites & Residential-Led Mixed Use Development with Planning Permission DM24
-  Housing Sites in Urban Areas in Unneighbourly Use to be Redeveloped DM25
-  Existing Employment DM15
-  Proposed Employment S4
-  Eastleigh Town, District and Local Centres and Neighbourhood Parades DM38, E3, DM21 & DM22
-  District and Local Centre DM38
-  Allocated Gypsy, Travellers and Travelling Showpeople Site and Gypsy Site DM33
-  Conservation Area DM12
-  Scheduled Ancient Monument DM12
-  Archaeological Site of National importance DM12
-  Strategic Footpath/Cycleway/Bridleway S13
-  Proposed Strategic Footpath/Cycleway/Bridleway S13
-  Proposed New Road S12, BO5
-  Junction Improvements DM13
-  Hamble River Mooring Restrictions DM37
-  Boatyard and Marina sites on the River Hamble DM20
-  Special Policy Areas BU7, BU9 & HA2
-  Railway Station Parking, Hamble HA1
-  Hamble Airfield HA3
-  Botley Mill BO7
-  Land at Ageas Bowl & Tennis Centre WE4
-  Hedge End Railway Station HE6

**Policy Number notation**  
 S4 Strategic  
 DM3 Development Management  
 E5 Local Area -Eastleigh

**Notes:**  
 For full details of the policies and proposals, please see the Eastleigh Borough Local Plan 2016 - 2036 document.



Strategy - Strategic Planning  
 Eastleigh Borough Council  
 Eastleigh House  
 Upper Market Street  
 Eastleigh  
 Hampshire  
 SO50 9YN  
 Tel: 023 8068 8000  
 Web [www.eastleigh.gov.uk](http://www.eastleigh.gov.uk)

