

4 - The Local Landscape Character Areas for Eastleigh Borough

4.1 This chapter contains 19 landscape character areas which represent individual area of land within the borough of Eastleigh that have distinct characters. The assessment of each of the areas, as laid out below, should provide sufficient information to understand what this landscape character consists of and the elements which are likely to be most sensitive to change: The 19 areas have been taken from the previous landscape assessment of Eastleigh borough, undertaken by Chris Blandford Associates (1997). The name of each area has been kept as set out in the 1997 document for ease of reference, but each area has been re-examined on the ground.

Each section of this chapter consists of:

4.2 Aerial photograph:

An annotated aerial photograph of the character area outlined in red.

4.3 Description:

A general description of the character area.

4.4 Historic features:

A brief description of the relevant historic features that have influenced the character area. It includes the historic landscape types, which have been recorded by Hampshire County Council in their study of the historic landscape, (<http://www.hants.gov.uk/landscape/landscapecharacter.html>) and broadly represent the range of historic human interactions that have shaped the land.

4.5 Ecological features:

A brief description of the relevant ecological features that are significant in the character area and the reasons why they are valued.

4.6 Key characteristics:

A summary list of significant characteristics drawn together from the above information.

4.7 Landscape Types:

The reference to character types has been updated and cross referenced to the County Council's Intergrated Character Assessment 2011.

4.8 Designations and constraints:

An Ordnance Survey map showing the following designations and constraints that are significant in the landscape character area, as appropriate:

Nature Conservation Designations – Ramsar, special protection area, special area of conservation, site of special scientific interest, site of important nature conservation, local nature reserve.

Historic parks and gardens

Conservation area
Scheduled ancient monument
Listed building
Main river
Floodzone 2
Floodzone 3

4.9 Visual Sensitivity:

The degree to which physical characteristics of enclosure or openness affect each area.

4.10 Key Issues:

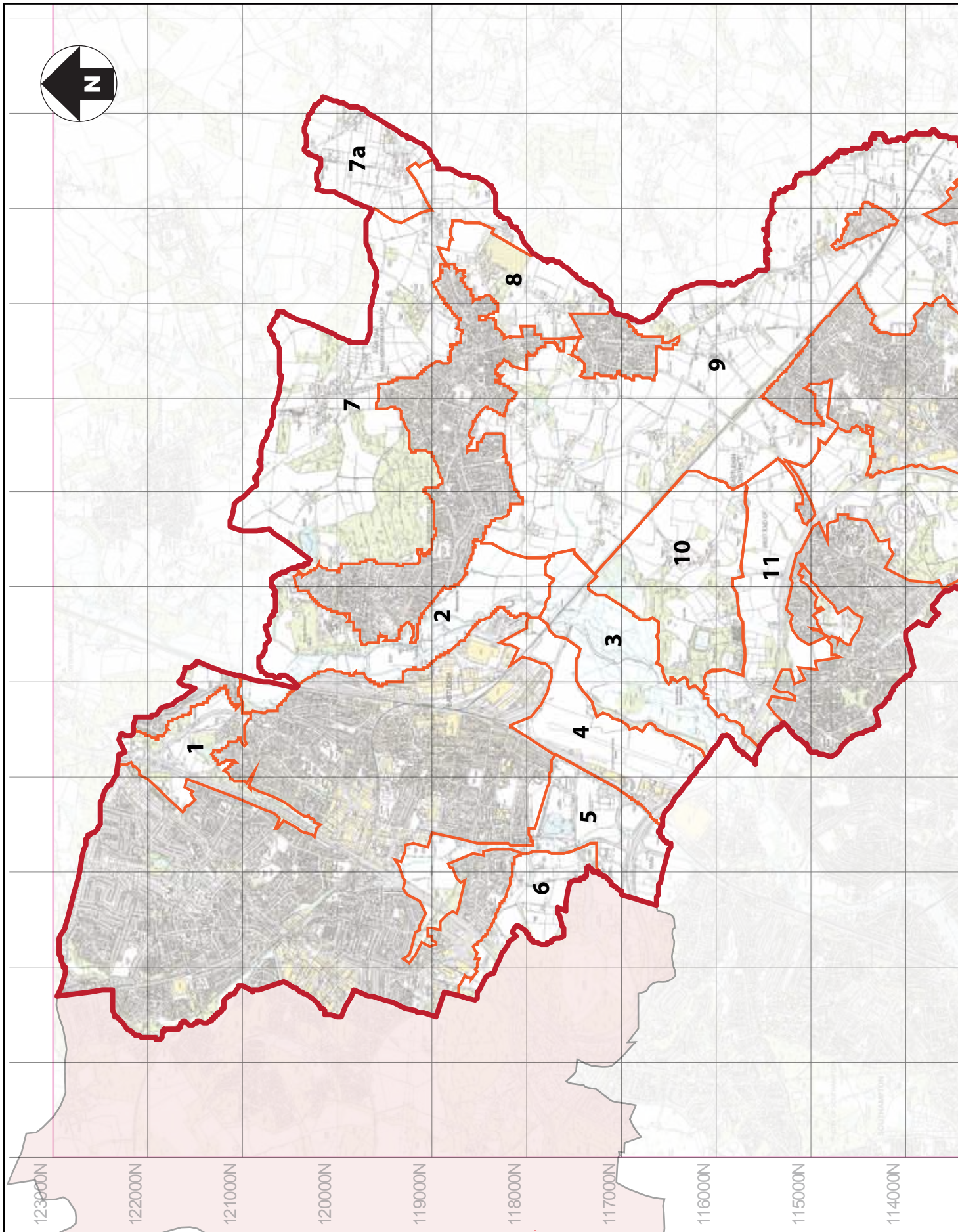
Significant issues that would affect the essential features of the landscape that have been identified through the consideration of the information gathered.

4.11 Photographs:

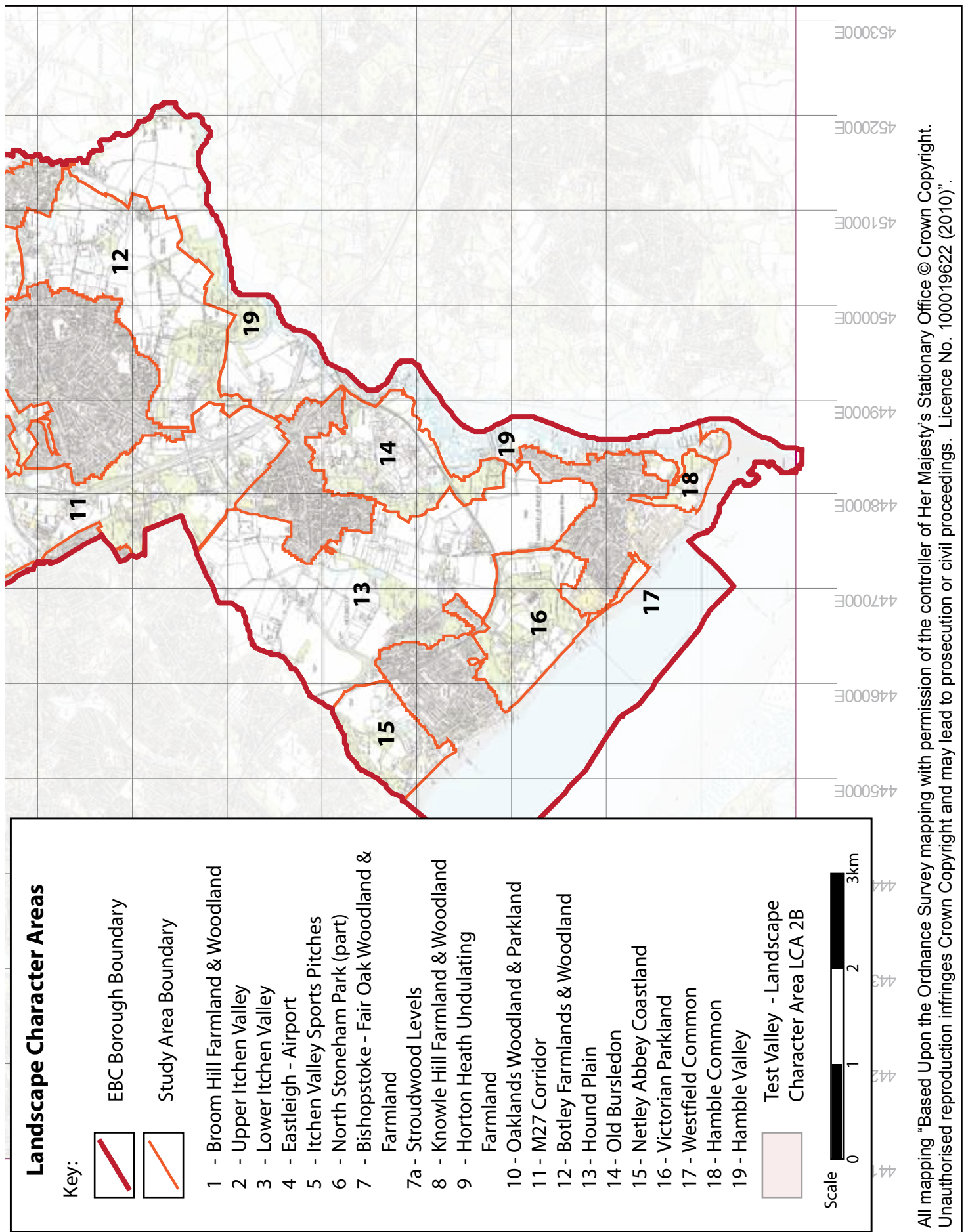
Photographs have been included throughout each section where considered useful.

Landscape Character Areas

Area 1: Broom Hill Farmland and Woodland	page 42
Area 2: Upper Itchen Valley	page 48
Area 3: Lower Itchen Valley Floodplain	page 56
Area 4: Southampton Airport	page 62
Area 5: Itchen Valley Sports Pitches	page 68
Area 6: North Stoneham Park	page 76
Area 7: Bishopstoke- Fair Oak Woodland and Farmland	page 84
Area 8: Knowle Hill Farmland and Woodland	page 92
Area 9: Horton Heath Undulating Farmland	page 98
Area 10: Oaklands Woodland and Parkland	page 106
Area 11: M27 Corridor	page 112
Area 12: Farmland and Woodlands	page 120
Area 13: Hound Plain	page 126
Area 14: Old Bursledon	page 132
Area 15: Netley Abbey Coastland	page 138
Area 16: Victorian Parkland	page 146
Area 17: Westfield Common	page 154
Area 18: Hamble Common	page 160
Area 19: Hamble Valley	page 166



Map 10. Landscape Character Areas



All mapping "Based Upon the Ordnance Survey mapping with permission of the controller of Her Majesty's Stationary Office © Crown Copyright. Unauthorised reproduction infringes Crown Copyright and may lead to prosecution or civil proceedings. Licence No. 100019622 (2010)".