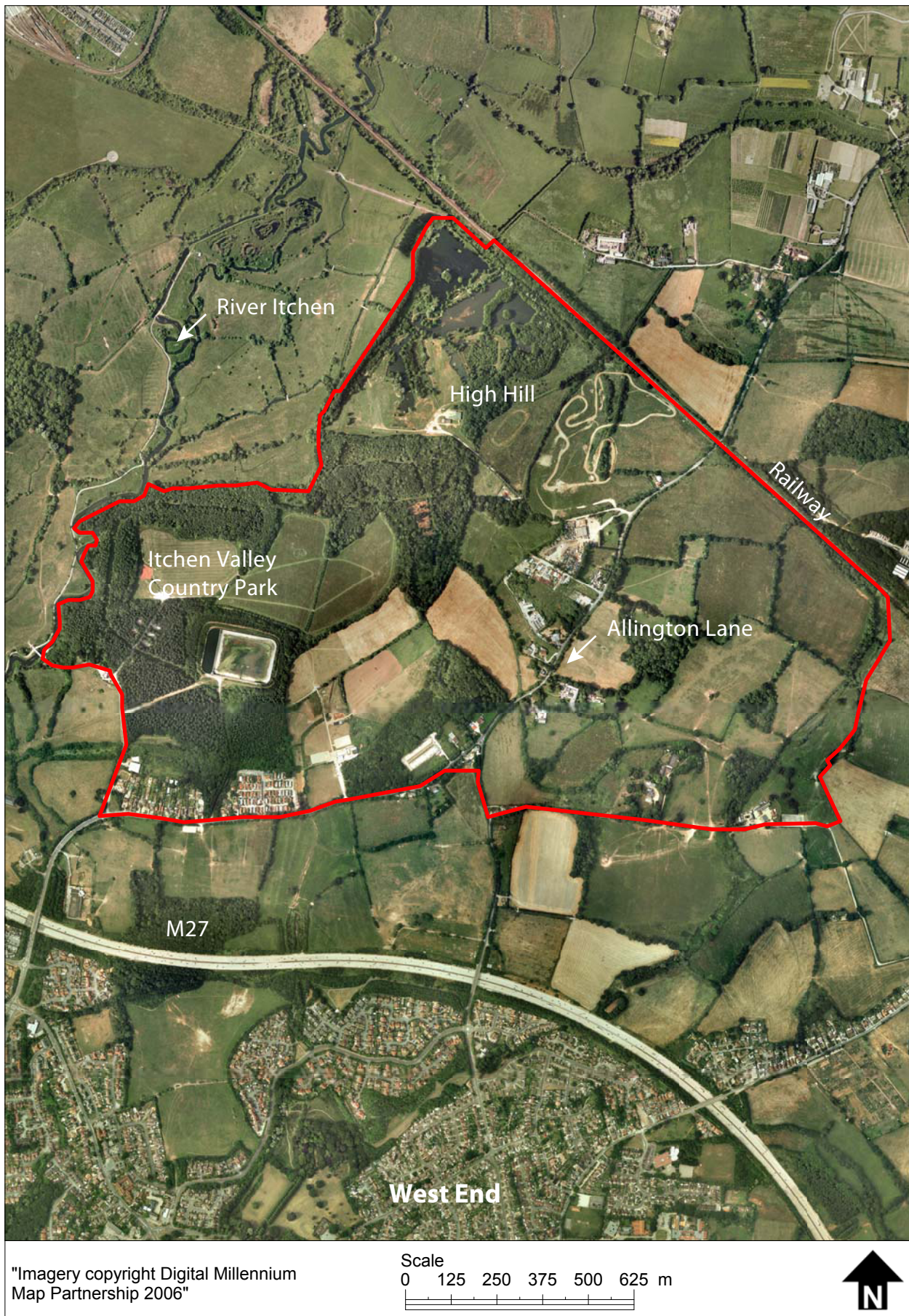


## Area 10: Oaklands Woodland and Parkland



## Description

- 4.147 The west of the area consists primarily of Itchen Valley Country Park and the woodland within it. East of the country park there are smaller areas of scattered woodland. Between the woodland there are medium-sized fields, used as pasture, quite often with intermittent hedges and barbed wire fences. Parkland is present around Oaklands House and Winslowe House.
- 4.148 The western boundary of the area conforms approximately to the boundary of the River Itchen SAC to the west. The top boundary follows the railway line that runs northeast. The bottom of the character area is defined in part by Allington Lane which then runs through the middle of the area. It is along this land that the development within this area has occurred.

## Historic Features

- 4.149 Allington Manor (part) – “1870s Allington Farm, parkland with 2 fishponds; ponds remain although smaller.
- 4.150 Winslow House - no information currently available.
- 4.151 There is one listed building found along Burnetts Lane in the character area, although this does not contribute significantly to the landscape character.

## HCC Historic Landscape Types:

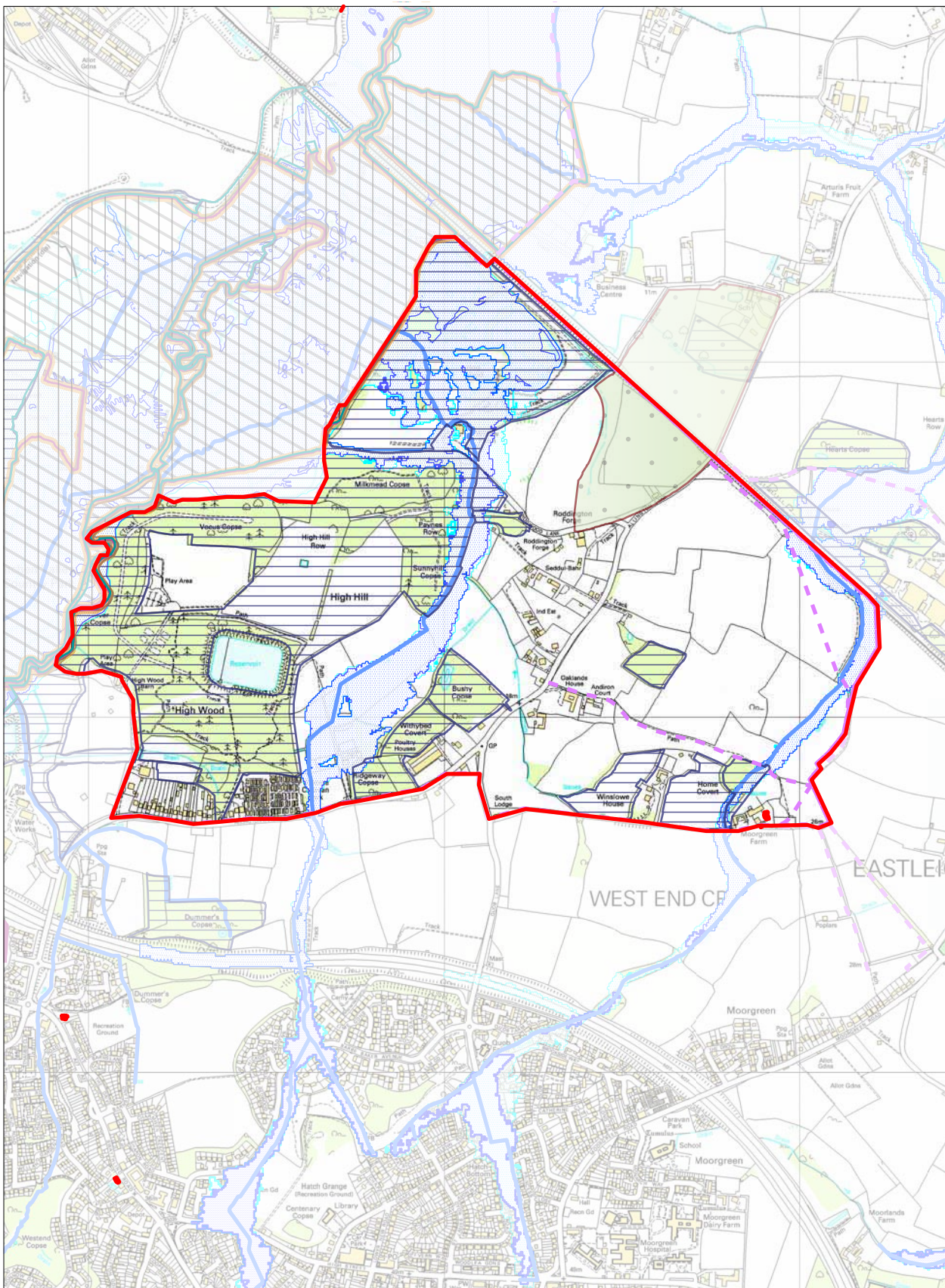
- 4.152 Historic landscapes types in this area are:
- 1.2 Medium irregular assarts and copses
  - 1.9 Small regular fields with straight boundaries
  - 4.2 Replanted assarted pre-1810 woodland
  - 4.3 Other pre-1810 woodland
  - 7.2 Valley floor woodlands
  - 7.7 Fishponds, hatchery complexes, ponds, lakes
  - 9.6 Post 1810 settlement (general)

## Ecological Features

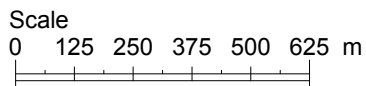
- 4.153 The SINC designated woodland associated with the country park forms part of the Itchen Valley Priority Area in the BAP. The park contains coniferous, broadleaf and ancient woodland and supports one or more ‘notable species’ (see appendix F).
- 4.154 Other sites are designated SINC for grassland, freshwater and wetland habitat significance.



### Designations and Constraints



© Crown copyright. All rights reserved.  
Licence LA100019622 (2010)



Key for Designation & Constraints:			
	Character Area Boundary		Main River
	Area designated Ramsar, SPA* & SSSI Area		Floodzone 2
	SAC - Special Area of Conservation		Floodzone 3
	SSSI - Site of Special Scientific Interest		Right of Way
	SINC - Site of Important Nature Conservation		
	LNR - Local Nature Reserve		
	Historic Parks and Gardens		
	Conservation Area		
	Scheduled Ancient Monument		
	Listed Building		
*SPA - Special Protection Area			

## Key Characteristics

4.155 The key characteristics for this area are:

- Undulating landform contrasting with the character areas to the west
- Woodland cover of conifers and deciduous trees
- Strong woodland character in western part of character area
- Sense of enclosure and restricted views
- Attractive parkland character to eastern part

## Landscape Types

4.156 Landscape types as set out in the Hampshire County Council Integrated Character Assessment 2011 for this area are:

- Lowland Mosaic, Medium Scale
- River Valley Floor
- Lowland Mosaic, Open

## Landscape Character Sensitivity

4.157 The wooded character of the land to the west and the parkland character to the east are both important. Despite the proximity of the airport/motorway and the popularity of the country park, the area retains a sense of quiet.

## Visual Sensitivity

4.158 The woodland of Itchen Valley Country Park has an enclosed feel. The parkland of Oaklands and Winslowe houses are generally enclosed, however the landform and gaps in the tree cover create narrow or filtered views outside this area.

## Key Issues

4.159 The key issues for this area are:

- The erosion of the rural character of Allington Lane through low levels of management and poor screening
- The need to maintain woodland cover
- The conflict between priorities of facilitating public access and nature conservation
- The fragmentation of the green network due to the removal of hedgerows



Figure 27. Panorama view towards Itchen Valley Country Park



- There are mature oaks that indicate the Winslowe and Oaklands estates could have an historic significance, however, limited evidence is available to assess the importance of the parkland



Figure 27. Panorama view towards Itchen Valley Country Park