

Winchester

Test Valley

Chandler's Ford

J12

M3

J13

J14

Eastleigh

Bishopstoke & Fair Oak

A

B

Horton Heath

Key:

Strategic Development Options (SDO)

J5

M27

C

D

West End

City of Southampton

Botley

J7

Hedge End

J8

M27

Bursledon

Netley

Southampton Water

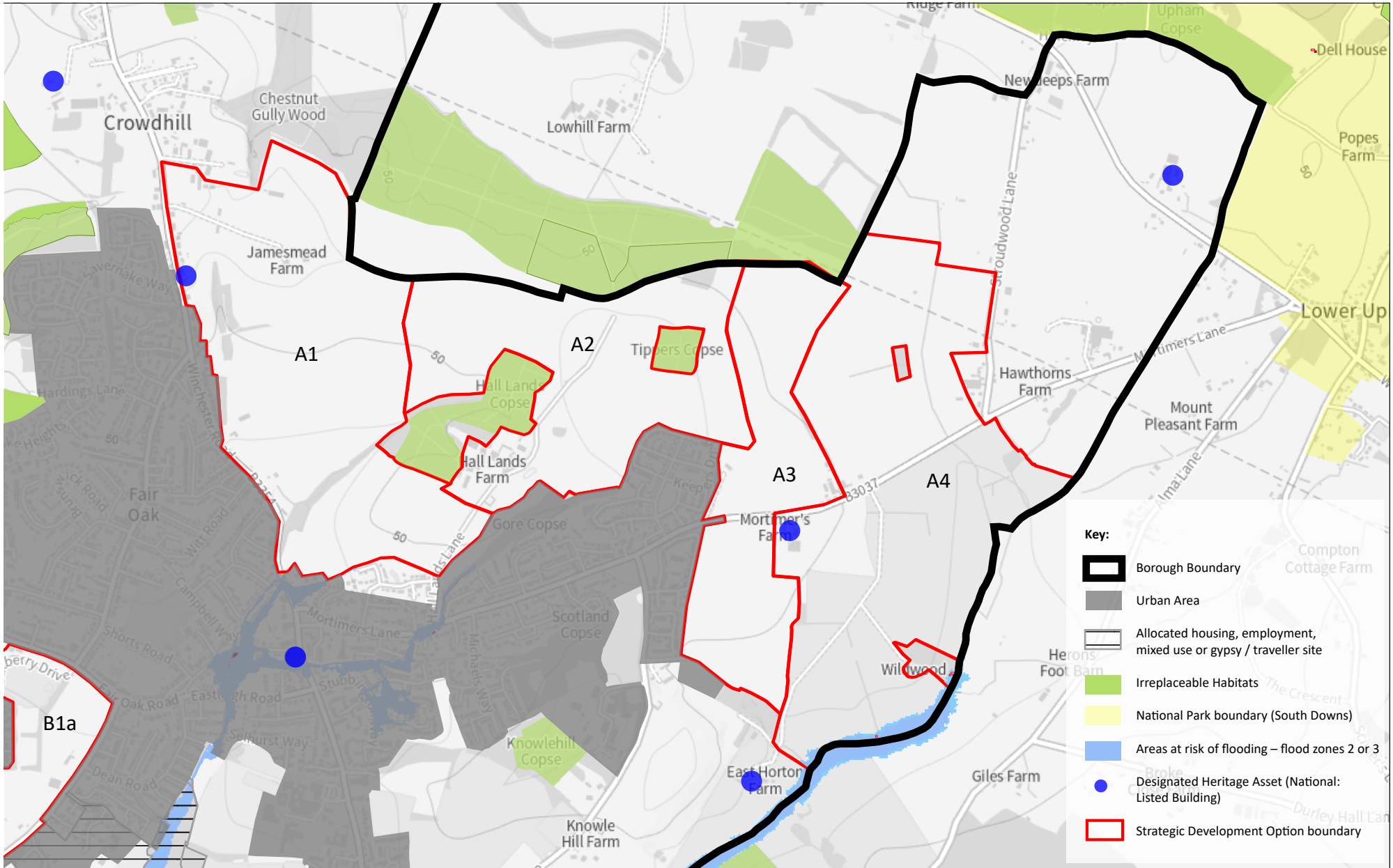
Hamble-le-Rice

River Hamble

Fareham

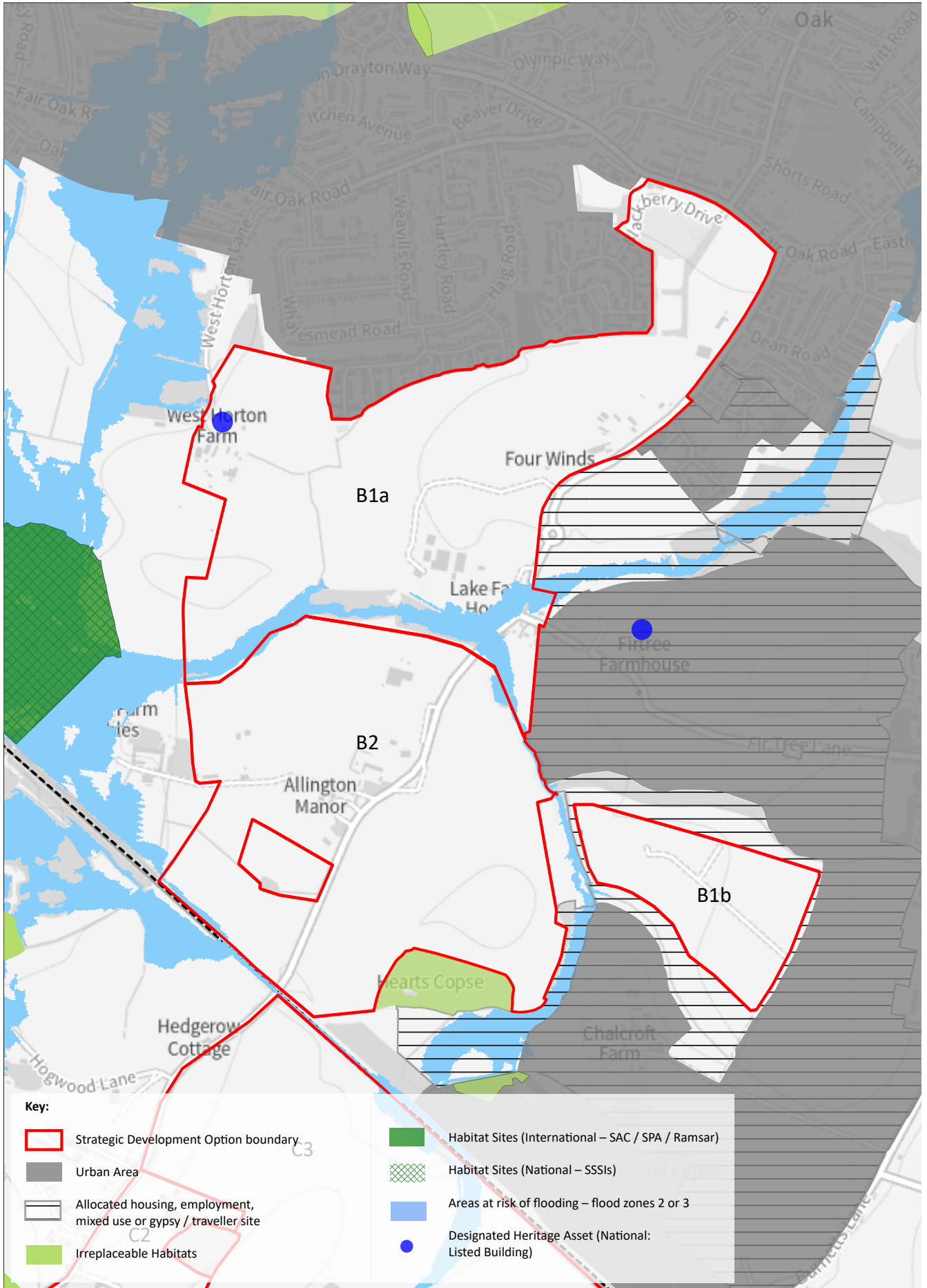
New Forest





**Areas and Assets Protected by the NPPF - SDO A  
('Footnote 7 areas')**

Scale: NTS | Date: Sept 2024 Dept: PP

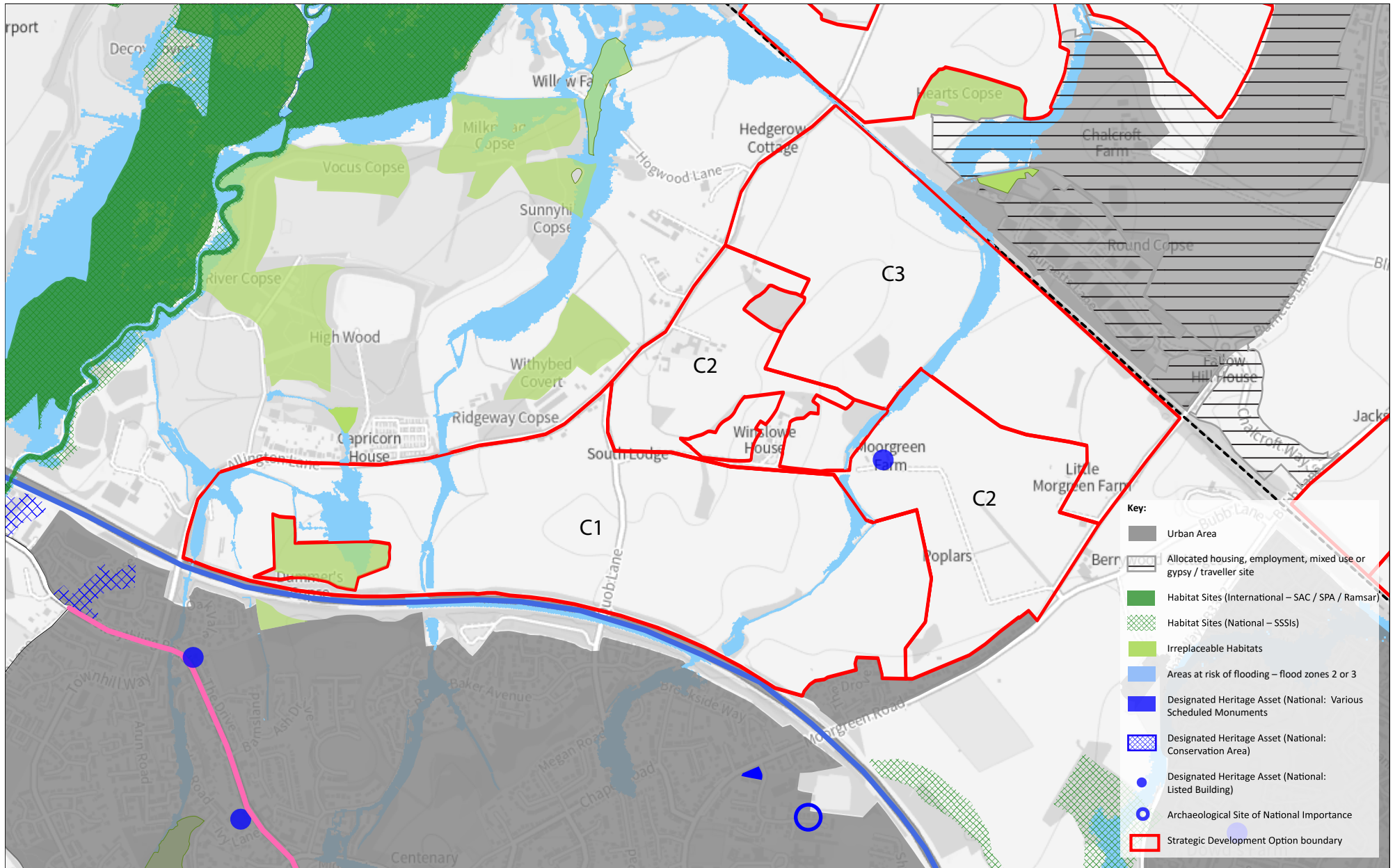


Scale: NTS | Date: Sept 2024 Dept: PP

## Areas and Assets Protected by the NPPF - SDO B ('Footnote 7 areas')

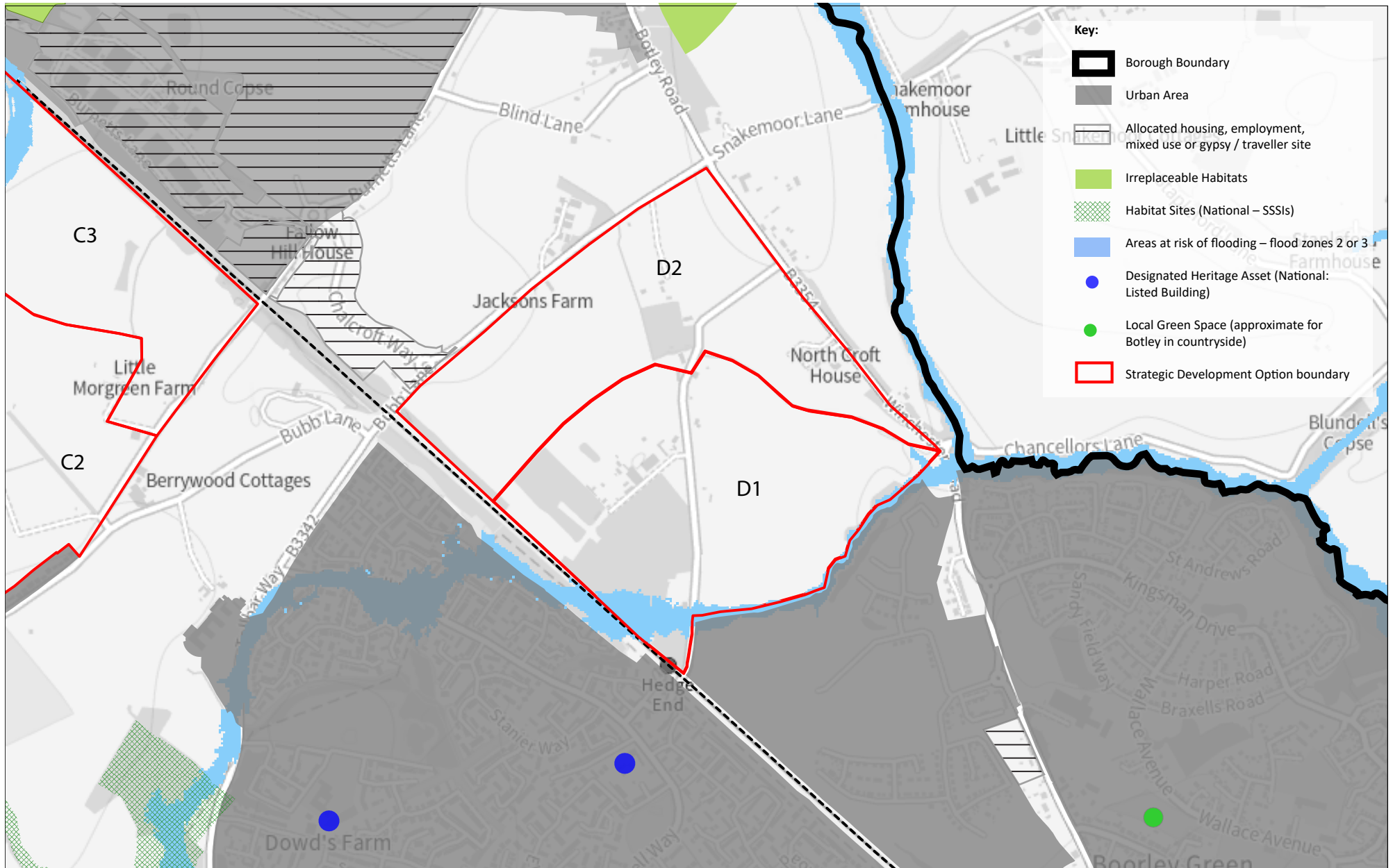
© Crown copyright and database rights 2024 Ordnance Survey (AC0000809520)





**Areas and Assets Protected by the NPPF - SDO C ('Footnote 7 areas')**

Scale: NTS | Date: Sept 2024 Dept: PP



**Areas and Assets Protected by the NPPF - SDO D  
('Footnote 7 areas')**

Scale: NTS | Date: Sept 2024 Dept: PP

