

Eastleigh Borough

Local Plan Review

Interim Biodiversity Background Paper

December 2024



**Let's shape our
future together**



This interim background paper informs the interim Sustainability Appraisal on the Eastleigh Borough Local Plan Review. It provides an initial assessment of the impact of site options on (non-international) biodiversity designations.

Any queries regarding the document should be sent to:

email: localplan@eastleigh.gov.uk

address: Local Plan team, Eastleigh Borough Council,
Eastleigh House, Upper Market Street, Eastleigh SO50 9YN

Biodiversity Background Paper

INTRODUCTION

- 1.1 The purpose of this background paper is to assess the potential development site options against:
- the non-international designations in the Borough;
 - the potential to achieve landscape scale biodiversity net gain.
- 1.2 The scores will inform the next iteration of the Sustainability Appraisal. (The assessment in relation to international designations is covered by the Habitat Regulations Assessment).
- 1.3 The site options are those proposed by developers and landowners. The Council needs to assess all these sites carefully, and has no view at this stage as to which sites should be allocated for development and which should continue to be protected. For the purposes of assessment, the sites proposed by developers and landowners have been grouped into:
- 4 Strategic Development Options (SDOs);
 - 52 Small and Medium Site Options (SMSOs).

IMPACT ON DESIGNATIONS

2. Introduction

- 2.1 The assessment considers the impact pathways from potential development sites to a variety of ecological receptors. The receptors assessed are:
- Sites of Special Scientific Interest (SSSIs);
 - Sites of Importance for Nature Conservation (SINCs)
 - Irreplaceable Habitats (in this case, ancient woodlands);
 - Priority habitats; and
 - Movement corridors.
- 2.2 The assessment is relatively high level. However, it is sufficient to provide a proportionate, structured and robust comparison of sites to inform the policy choices through the Local Plan Review regarding the sites to allocate for development.
- 2.3 More detailed assessments are likely to be required at the planning application stage. Therefore, where this assessment indicates that there are likely to be no impacts in relation to a particular site / impact pathway / receptor, it is possible that at the planning application stage the more detailed assessment required could still identify some impacts and the need for mitigation.

- 2.4 At this stage in the Local Plan process the assessment identifies the potential for impacts prior to mitigation, to provide a consistent baseline assessment of all sites. Therefore, this does not mean, where an impact is identified, that this impact will occur if the site were to be developed. The potential for mitigation measures to address these impacts will be considered further as the local plan review evolves, and ultimately at the planning application stage.

3. Relevant legislation and policy

The Conservation of Habitats and Species Regulations (2017 and 2019) (as amended)

- 3.1 These regulations form legislation that aims to protect habitats and species within the UK which are in danger of disappearing. The regulations cover the sites/habitats of greatest significance and international importance (European Sites) and European Protected Species (EPS). Under these regulations, prior to plans being adopted by a planning authority, an assessment must be carried out under these regulations, a Habitats Regulations Assessment (HRA), by the competent authority to test if a plan could significantly harm the designated features of a European Site.

Environment Act (2021)

- 3.2 This legislation sets out how the natural environment within the UK will be protected and enhanced. The Act sets out objectives to improve air and water quality as well as to protect/restore wildlife and their habitats, especially against the effects of climate change. Plans should consider the strengthened duty to conserve and enhance biodiversity, and Local Nature Recovery Strategies should be prepared. The Act also states that local authorities will also need to have due regard to the environmental principles policy statement, set out by the Secretary of State.

Natural Environment and Rural Communities (NERC) Act (2006) (as amended)

- 3.3 This legislation is concerned with making provision for bodies concerned with the natural environment, in connection with wildlife and designated sites. The Act establishes the role of government bodies such as Natural England (NE). NE are to be consulted in the plan-making process in order to assess the plan against the NE objectives of protecting, enhancing and promoting biodiversity, landscape and the natural environment. Under this legislation, local authorities are placed under a duty to enhance, restore and/or protect species and habitats important to biodiversity.

Wildlife and Countryside Act (1981) (as amended)

- 3.4 This Act gives protection to native species (both flora and fauna), controls non-native species and enhances the protection and management of sites important to nature conservation and biodiversity including Sites of Specific Scientific Interest (SSSIs). Plans will need to demonstrate compliance with the Act through the use of ecological surveys conducted by a professional ecologist.

National Planning Policy Framework (NPPF) (December 2023)

- 3.5 The NPPF sets out, in summary, how the planning system is to contribute to the achievement of sustainable development and how plans can deliver this. All plans should aim to protect and enhance the natural environment and improve biodiversity. Plans should minimise impacts on providing net gains for biodiversity. Plans should identify, map and safeguard components of local wildlife-rich habitats and wider designated networks, including the hierarchy of international, national and locally designated sites of importance for biodiversity, and should promote conservation. The restoration and enhancement of priority habitats and ecological networks, as well as the protection and recovery of priority species, should be pursued through plan-making and identifying and pursuing opportunities for securing measurable net gains for biodiversity.

National Planning Policy Guidance (NPPG) (2014 to present)

- 3.6 The NPPG is a resource providing technical guidance in different topic areas, including the natural environment, building on and giving further detail on the policies laid out within the National Planning Policy Framework (NPPF). The guidance explains the key issues in implementing policy to protect and enhance the natural environment, including local and national requirements and details the key issues related to each specific habitat type.

Hampshire and South Hampshire

- 3.7 Hampshire County Council is the lead authority preparing the emerging Local Nature Recovery Strategy in accordance with the Environment Act 2021.
- 3.8 The Partnership for South Hampshire (PFSH) consists of all of the authorities in that area. The PFSH Spatial Position Statement (2023) includes strategic principles to address the climate emergency. These include prioritising the protection and enhancement of key habitats and species, achieving nature recovery, and delivering connected networks of multifunctional green and blue infrastructure. The Statement also reflects various strategic environmental programmes or issues over the relevant geographies, for example:
- Mitigating the impacts of visitor pressure on the Solent (with a revised Bird Aware Strategy approved in 2024), and on the New Forest;
 - Mitigating the effects of nutrients;
 - Managing water demand.

Great Crested Newt Licencing

- 3.9 Great crested newts and their habitats are protected under UK and European legislation, therefore planning authorities are required to consider the species as part of the planning application process.

3.10 Unless it can be definitively demonstrated that a development poses no risk to great crested newts or their habitats, there are three licensing options in Eastleigh Borough. These are to:

- Join the District Licence Scheme, and so be authorised by Eastleigh Borough Council shortly after planning permission has been approved; or
- Apply directly to Natural England for a licence post-planning; or
- Work with a registered ecologist under the low impact class licence.

Draft Biodiversity Strategy 2024-2034

3.11 This strategy sets out Eastleigh Borough Council's approach to protect, maintain and enhance biodiversity and the natural environment in the Borough. It provides a framework for the delivery of a diverse natural environment and a greener future for the Borough. This strategy forms part of the Council's response to the climate change and environmental emergency.

3.12 It sets broad targets for habitat creation, habitat restoration and species recovery. It also identifies priority areas to guide the delivery of these targets into the areas where the most benefits can likely be achieved for biodiversity in the Borough. The draft strategy has been put to public consultation and is due to be finalised in the winter of 2024.

4. Designations

4.1 A brief description of the designations is included below.

Statutory

International

Special Areas of Conservation (SAC), Special Protection Areas (SPA), and Ramsar Sites

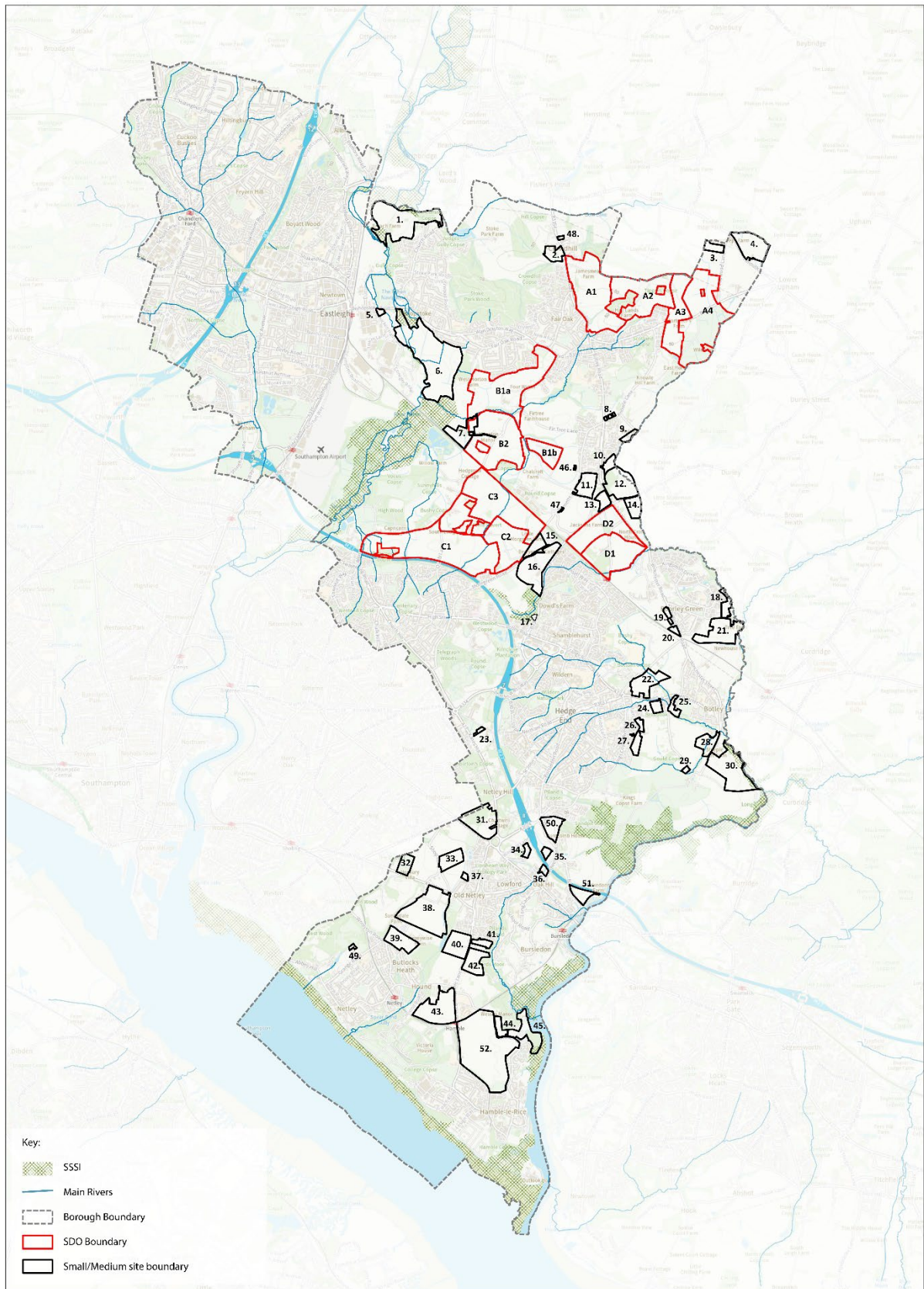
4.2 Definitions of the Special Areas of Conservation (SAC), Special Protection Areas (SPA), and Ramsar sites can be found in section three of the Habitat Regulations Assessment Preliminary Screening Report: Issues and Options.

National

Sites of Specific Scientific Interest

4.3 There are five Sites of Specific Scientific Interest (SSSIs) in the Borough, see Figure 1. The impacts on these receptors are scored in this assessment. A short description of each SSSI is included below.

Figure 1: SSSIs and site options



Ecology designations - SSSI

© Crown copyright and database right 2014. Data from Ordnance Survey (OSN000000000000)

River Itchen SSSI

- 4.4 This site is notified for classic chalk stream and river, fen meadow, flood pasture and swamp habitats, particularly formations of in-channel vegetation dominated by water crowfoot, riparian vegetation communities (including wet woodlands) and side channels, runnels and ditches associated with the main river and former water meadows. The site is also notified for significant populations of the nationally rare southern damselfly, assemblages of nationally rare and scarce freshwater and riparian invertebrates, including the white-clawed crayfish, otter, water vole, freshwater fishes and the assemblage of breeding birds and wetland passerines.

Moorgreen Meadows SSSI

- 4.5 The site includes neutral meadows and alder wood flanking a small tributary of the River Hamble. The meadows lie on alluvium and clay with thin deposits of peat and have a sward which comprises at least 17 co-dominant herbs and grasses. The site is of exceptional scientific importance for its populations of marsh orchids, particularly its geographically isolated population of the Northern Marsh Orchid, which grows in close juxtaposition to four other species of marsh orchid. Hybrids between the five species occur in every combination and the site can thus be regarded as a 'hot bed' of micro-evolution.

Upper Hamble Estuary and Woods SSSI

- 4.6 The site comprises the uppermost section of the estuary of the River Hamble and its flanking zones of saltmarsh, reed swamp and ancient semi-natural woodland. Twelve types of ancient broad-leaved woodland are present, along with rare and uncommon species, assemblages and transitional zones, which collectively comprise one of the most ecologically diverse woodland areas in central southern England. Small areas of unimproved neutral grassland occur along the river which comprise a rich flora indicative of long-established permanent pastures. The gradation from ancient semi-natural woodland to estuarine saltmarsh, the latter of which supports spartina and rare invertebrate species, is a nationally rare feature. The swamp and fen vegetation provides shelter for birds including great crested grebe and supports breeding populations of reed and sedge warblers. The mudflats support large populations of marine worms, crustaceans and molluscs which provide a feeding ground for several species of shorebirds.

Lincegrove and Hackett Marshes SSSI

- 4.7 The site comprises mature saltmarsh on the west bank of the River Hamble estuary which is elevated to about the HWMST (High Water Mark of Spring Tide) and dissected by complex patterns of drainage creeks. The marshes, which support spartina, grade to the landward margin and structurally they are one of the best examples of mature saltmarsh on the south coast. They are one of only eight extensive saltmarshes on the central south coast between Poole in Dorset and Pagham in West Sussex.

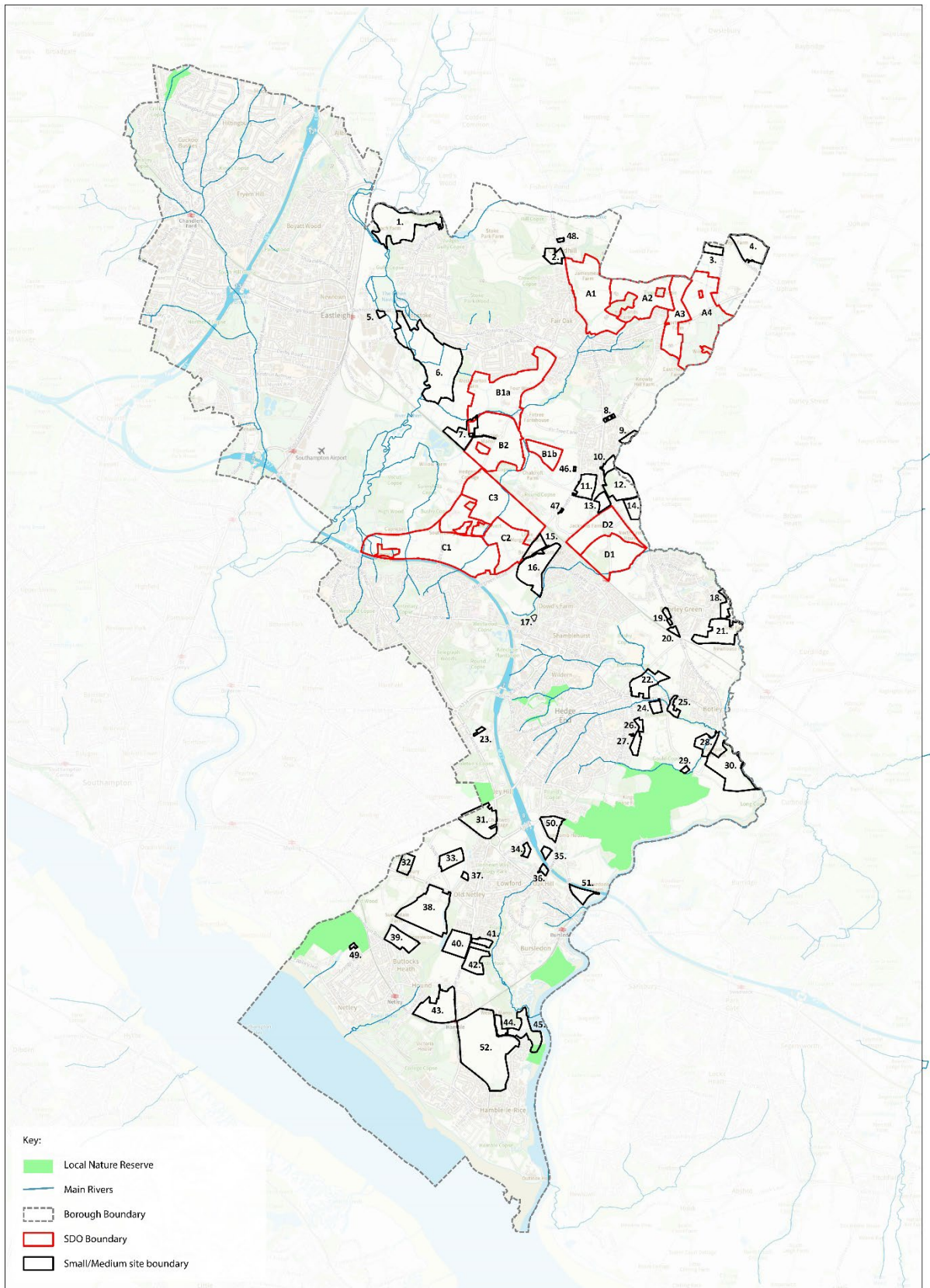
Lee-on-the-Solent to Itchen Estuary SSSI

- 4.8 The site extends along the eastern shore of Southampton Water from Lee-on-the-Solent to the mid-Itchen estuary and includes the lower estuary of the River Hamble. The site comprises extensive intertidal muds with a littoral fringe of vegetated shingle, saltmarsh, reedbed, marshy grasslands, acidic grassland, wet heath and deciduous woodland on alluvium, valley gravels and Bracklesham Beds. The site is an integral part of Southampton Water which is of international importance for over-wintering dark-bellied geese, and of national importance for three species of wildfowl (great-crested grebe, teal and wigeon) and five species of wader (black-tailed godwit, dunlin, grey plover, ringed plover, redshank). The SSSI supports an outstanding assemblage of nationally scarce coastal plants. In addition, the cliffs at Brownwich and the foreshore at Lee-on-The Solent are of national geological importance.

Local Nature Reserves

- 4.9 There are seven Local Nature Reserves (LNRs) in the Borough, see Figure 2. LNRs are a statutory designation selected to provide places for people to enjoy nature close to where they live. Features of significant ecological interest within LNRs are covered by other designations for nature conservation such as SSSIs and SINCs, although LNRs can also include less ecologically valuable areas which have a heavier public access focus. For this assessment, to avoid duplication, LNRs have not been scored, as the potential impacts on features of ecological importance within them have been captured within the assessment of other receptors, namely SSSIs and SINCs. A short description of each LNR is included below.

Figure 2: Local Nature Reserves and site options



Ecology designations - Local Nature Reserve
 © Dorset, Hampshire and Isle of Wight Wildlife Trusts (2019)



Hocombe Mead Local Nature Reserve

- 4.10 The Ancient Woodland and wet meadows at Hocombe Mead are over 400 years old and support many special plants and animals including Purple-loosetrife and 29 species of butterfly.

Wildern Local Nature Reserve

- 4.11 Wetland habitat featuring a mosaic of ponds, two flooded meadows, woodlands and a valley mire all linked by the streams which flow through the site. This supports a variety of bird, dragonfly and butterfly species.

Netley Common Local Nature Reserve

- 4.12 Open heathland including grassland with islands of scrub and gorse surrounded by a mix of woodland fringe. Heathlands are particularly rare and remnant fragments of heathland are of national biodiversity importance and host a variety of wildlife.

Manor Farm Local Nature Reserve

- 4.13 Woodland, fields and river which supports an array of wildflowers, insects and reptiles.

Westland Woodland Park Local Nature Reserve

- 4.14 Mix of Ancient Woodlands and grasslands covering 150 acres. It supports a mix of natural habitats and wildlife.

Hackett's Marsh Local Nature Reserve

- 4.15 Meadows with saltmarsh vegetation that is of particular importance for a wide range of insect and bird species.

Mercury Marshes Local Nature Reserve

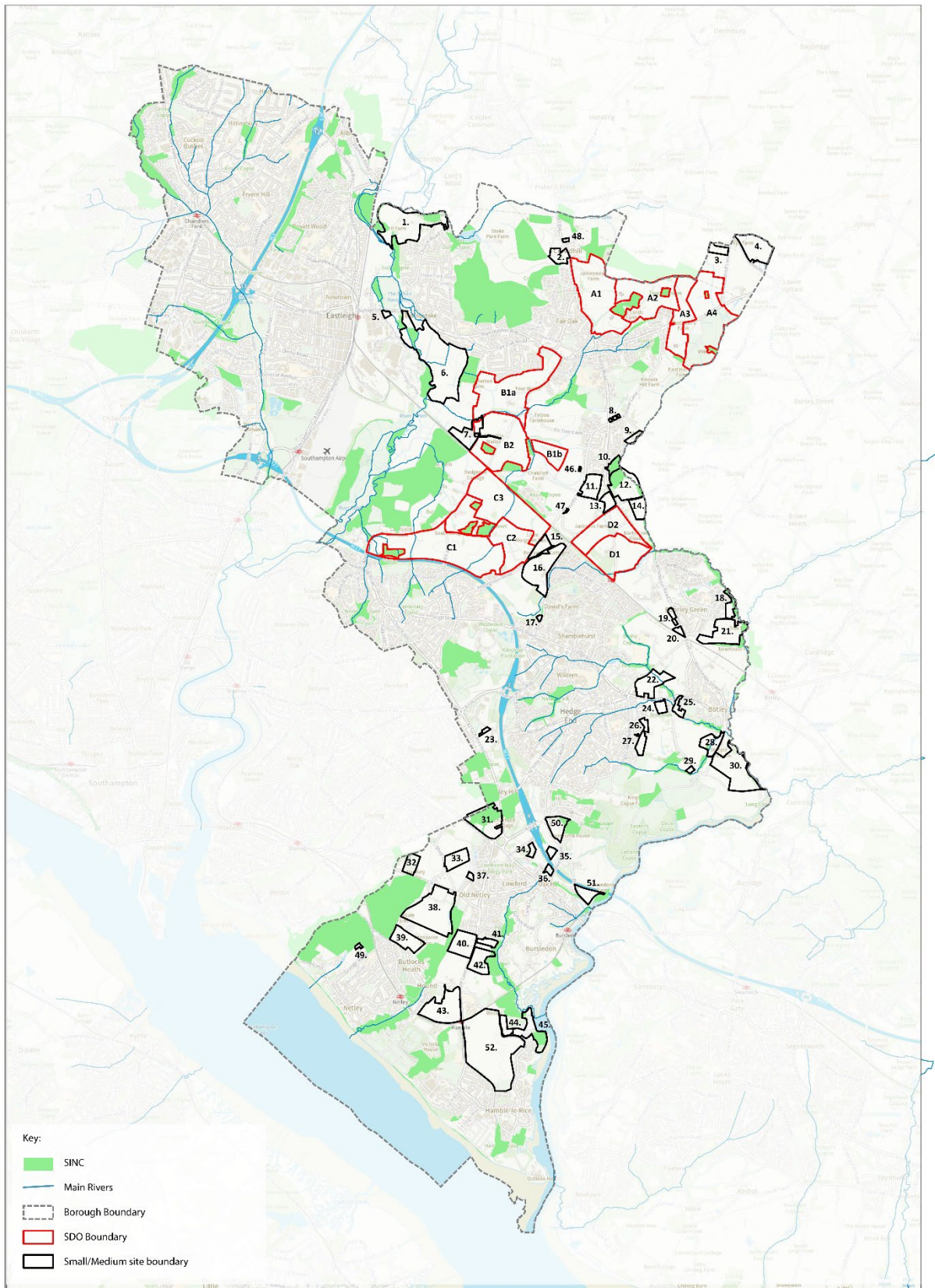
- 4.16 Woodland species, reedbeds and intertidal mud, creeks and islands. The reserve is of particular importance for some invertebrates and forms an important feeding area for waders, wildfowl and herons. The area has been invaded by Japanese Knotweed.

Non-statutory

Sites of Importance for Nature Conservation

- 4.17 There are 150 Sites of Importance for Nature Conservation (SINCs) in the Borough, see Figure 3. Impacts on these receptors are scored in this assessment. Table 1 below includes the habitat SINC types found in the Borough.

Figure 3: Sites of Importance for Nature Conservation and site options



Ecology designations - SINC

© Crown copyright and database right 2011 Ordnance Survey 100019386/000

EASTLEIGH
CONSULTANTS

Table 1: SINC Habitat Types

Classification	Criteria
1A	Ancient semi-natural woodlands
1B	Other woodland where there is a significant element of ancient semi-natural woodland surviving
1Cii	Other semi-natural woodland if; (ii) they comprise important community types of restricted distribution in the county, such as yew woods and alder swamp woods
1D	Pasture woodland and wooded commons, not included in any of the above, which are of considerable biological and historical interest
2A	Agriculturally unimproved grasslands
2B	Semi-improved grasslands which retain a significant element of unimproved grassland
2D	Grasslands which have become impoverished through inappropriate management, but which retain sufficient elements of relic unimproved grassland to enable recovery
3A	Areas of heathland vegetation; including matrices of dwarf shrub, acid grassland, valley mires and scrub
3B	Areas of heathland which are afforested or have succeeded to woodland if; (i) they retain significant remnants of heathland vegetation which would enable their recovery, or 3Bii (ii) they are contiguous with, or form an integral part of an open area of heathland
4A	Semi-natural coastal and estuarine habitats, including saltmarsh, intertidal mudflats, sand dunes, shingle, brackish ponds, grazing marsh and maritime grasslands
5A	Areas of open freshwater (e.g. lakes, ponds, canals, rivers, streams and ditches) which support outstanding assemblages of floating/submerged/emergent plant species, invertebrates, birds or amphibians.
5Ai	Areas of open freshwater which support good floristic assemblages
5B	Fens, flushes, seepages, springs, inundation grasslands etc. that support a flora and fauna characteristic of unimproved and waterlogged (seasonal or permanent) conditions
5Bii	Spring-fed fens and flushes
5Biii	Purple Moor-grass and Rush-pasture
6A	Sites which support one or more notable species
6B	Sites which regularly support a significant population of a species which has a restricted distribution or has substantially declined in population or range. Such sites may be used seasonally or for only one part of a species life cycle
7A	Sites of nature conservation interest which occur in areas otherwise deficient in such interest, and known to be of particularly high value to local communities e.g. community wildlife sites.
8A	Sites which have been designated as Regionally Important Geological sites

Habitats

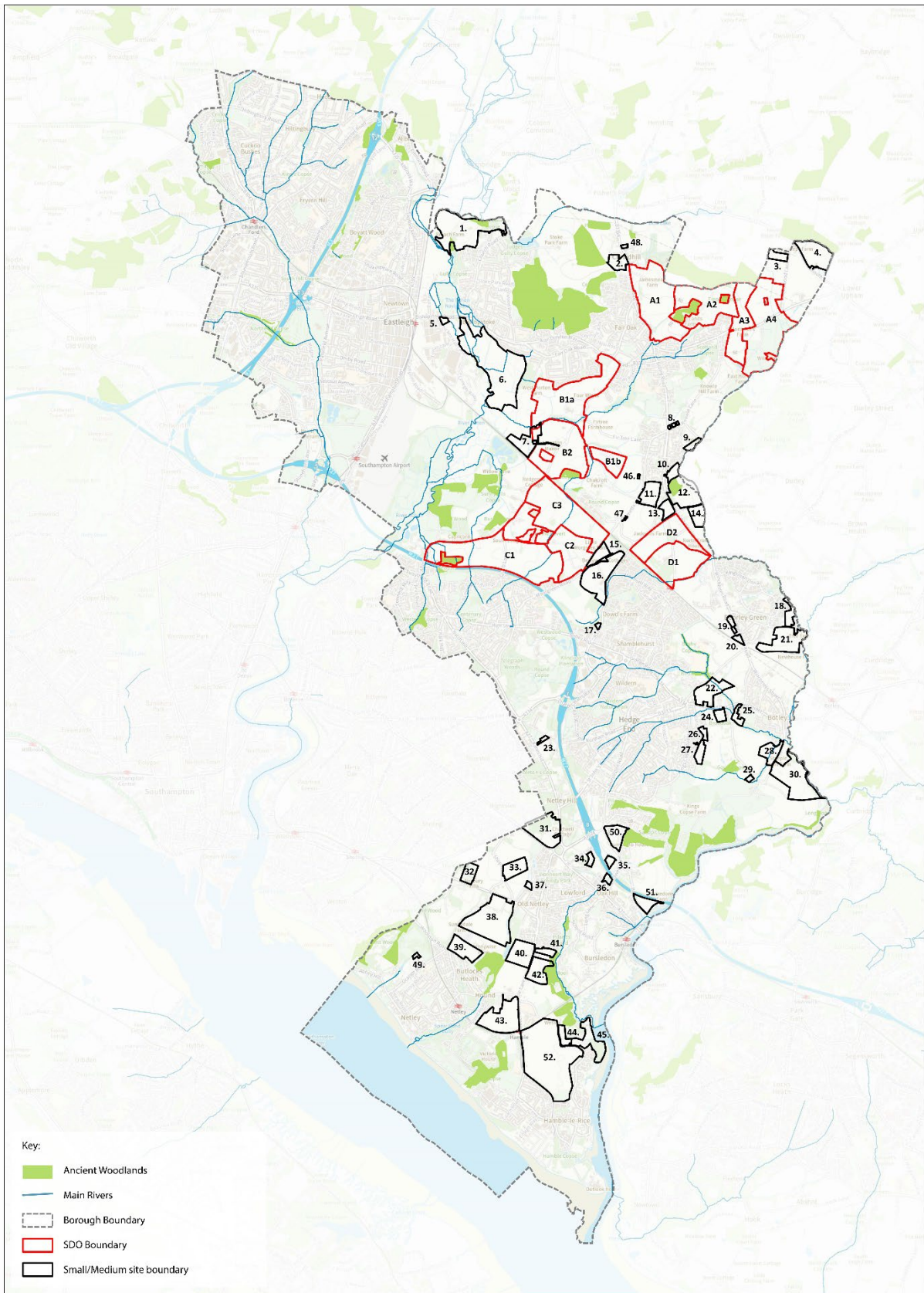
Irreplaceable Habitats

- 4.18 Irreplaceable habitats are habitats which are very difficult (or take a very significant time) to restore, recreate or replace once destroyed, due to their age, uniqueness, species diversity or rarity. They include some of England’s most ecologically valuable terrestrial and intertidal habitats.
- 4.19 The definition and list of irreplaceable habitats for Biodiversity Net Gain are set out in the Biodiversity Gain Requirements (Irreplaceable Habitat) Regulations 2024. The list includes:
- Ancient woodland
 - Ancient and veteran trees
 - Blanket bog
 - Limestone pavements
 - Coastal sand dunes
 - Spartina saltmarsh swards
 - Mediterranean saltmarsh scrub
 - Lowland fens
- 4.20 The NPPF glossary sets out an almost identical list, the only difference being that it refers simply to ‘sand dunes’ and ‘saltmarsh’. Four types of irreplaceable habitats are found in the Borough, these are: ancient woodlands, ancient and veteran trees, spartina saltmarshes and a small area of lowland fen.

Ancient Woodland

- 4.21 There are approximately 47 ancient woodland parcels in the Borough, see Figure 4. Many, but not all, are within other designations for nature conservation, such as SSSIs and SINCs. Impacts on all these receptors, including ancient woodlands, are scored in this assessment.

Figure 4: Ancient Woodlands and Site Options



Key:

- Ancient Woodlands
- Main Rivers
- - - Borough Boundary
- SDO Boundary
- Small/Medium site boundary

Ecology designations - Ancient Woodland
© Crown copyright and database rights 2014. Data from Ordnance Survey (10000904695)

EASTLEIGH
 BOROUGH COUNCIL
PO Box 8011 | Eastleigh | Hampshire | SO50 9YF

Ancient and Veteran Trees

- 4.22 The locations of many ancient and veteran trees within Eastleigh Borough are unknown. Therefore, as a result of this incomplete dataset, these trees cannot be scored in this high-level assessment. Furthermore, the location and protection of individual trees are better considered at the more detailed site planning stage. As with all irreplaceable habitats, there is a presumption for the retention of all ancient and veteran trees, but indirect impacts will still need to be considered at the appropriate stage.

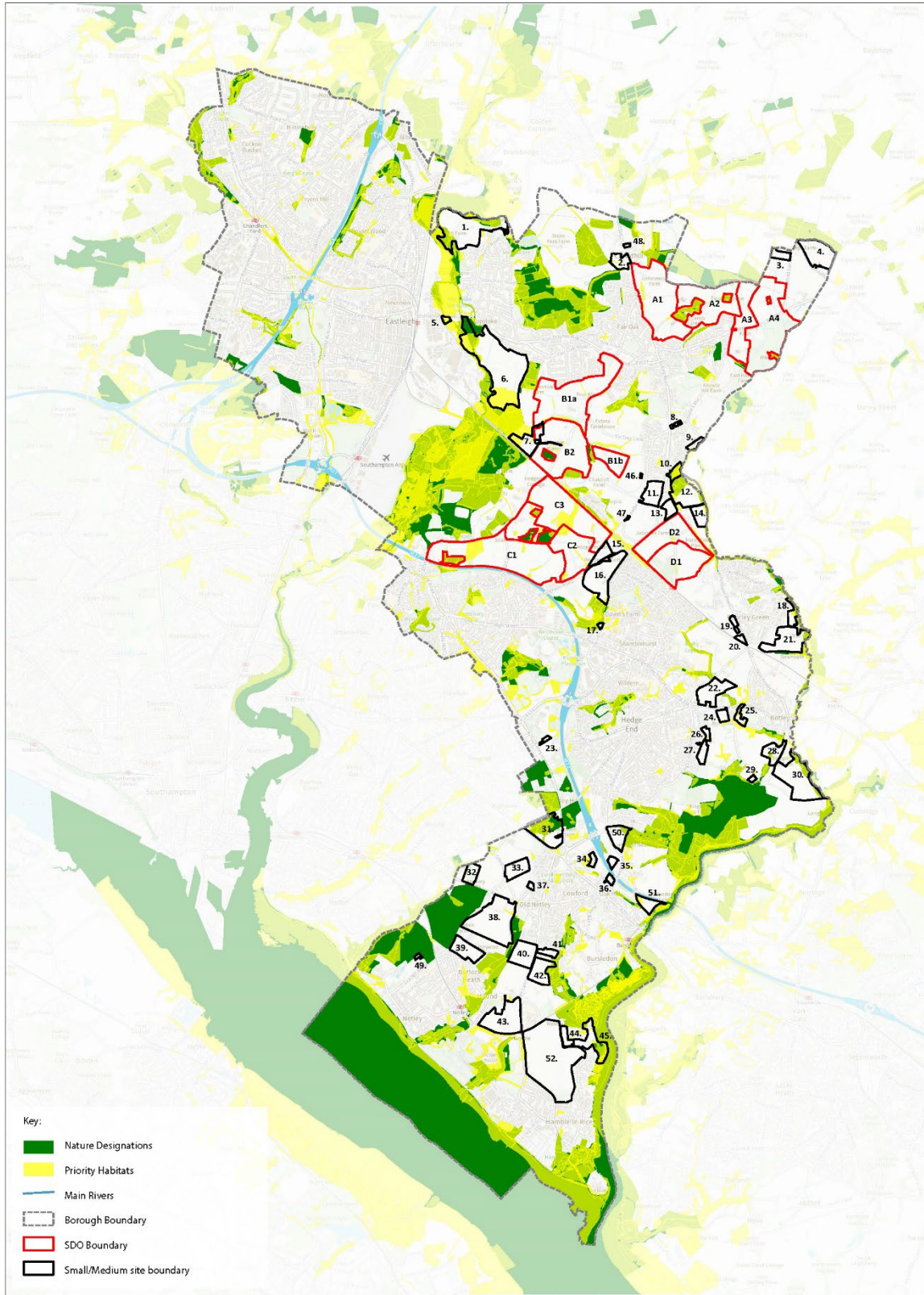
Spartina Saltmarsh and Lowland Fen

- 4.23 All saltmarsh and lowland fen within Eastleigh Borough are within other designations for nature conservation, such as SSSIs and SINCs. Therefore, for this assessment, to avoid duplication these irreplaceable habitats have not been scored, as the potential impacts have been captured within the assessment of other receptors, namely SSSIs and SINCs.

Priority Habitats

- 4.24 Priority Habitats are those which have been deemed by Natural England to be of principal importance for the purpose of conserving biodiversity. In Eastleigh Borough there are twenty different priority habitat types, which are listed in Table 2 below. The priority habitats are often found within designated sites. Figure 5 illustrates where there are additional areas of priority habitat outside of designated sites. Impacts on these receptors are scored in this assessment.

Figure 5: Priority Habitats and Site Options



Ecology designations - Priority Habitats

© Crown copyright and database rights 2024 Ordnance Survey (AC000000020)



Table 2: Priority Habitat Types

Lowland dry acid grassland
Arable field margins
Hedgerows
Lowland mixed deciduous woodland
Wet woodland
Wood-pasture and parkland
Traditional orchards
Lowland heathland
Purple moor-grass and rush pastures
Lowland fens
Reedbeds
Coastal and floodplain grazing marsh
Open mosaic habitats on previously developed land
Coastal saltmarsh
Intertidal mudflats
Lowland meadows
Rivers
Eutrophic standing waters
Ponds
Coastal vegetated shingle

Species

4.25 The impacts on individual species across the Borough have not been scored at this stage. There are hundreds of plant, animal and fungi species in Eastleigh Borough which rely on different environmental conditions. These cannot be effectively assessed at this high level. Many species however are intrinsically linked to the receptors which have been scored in this assessment (SSSIs, SINC, ancient woodland, priority habitat and movement corridors) and therefore impacts on these species have been considered as part of these receptors' ecosystems.

5. Habitat Regulations Assessment of Impacts on International Designations

5.1 In accordance with the Habitat Regulations, the Council is undertaking a Habitat Regulations Assessment. This will assess the effects of the Local Plan on the statutory international designations. Therefore, the assessment in this paper does not cover the effect on international designations.

- 5.2 A Habitat Regulations Assessment Preliminary Screening Report has been prepared to inform this Issues and Options consultation. This assesses whether or not each site would have a 'likely significant effect' on an international designations, considering a number of different impact pathways (prior to mitigation).
- 5.3 Table 5.12 of the screening report summarises where these 'likely significant effects' occur. This demonstrates that all sites have a 'likely significant effect' on at least two pathways (air pollution and water pollution). A large number of sites also have a 'likely significant effect' on one or more other pathways.
- 5.4 At this stage, it is worth noting in brief summary from Table 5.12, in respect of the SDOs, that:
- SDOs B, C and D are assessed to have a likely significant effect prior to mitigation on 5 impact pathways (air pollution, recreational disturbance, otter outside of European site boundaries, non-native species / site specific hydrology, and water pollution).
 - SDO A1 – 3 is assessed to have a likely significant effect prior to mitigation on 3 impact pathways (air pollution, otter outside of European site boundaries, and water pollution, but not recreational disturbance or non-native species / site specific hydrology). (The full SDO A with A4 is assessed to have a likely significant effect on 4 impact pathways including, in addition, non-native species / site specific hydrology).
- 5.5 The Screening Report will be updated as required prior to the Council selecting its preferred sites for development. At this stage, the number of 'likely significant effects' generated by each site (prior to mitigation) can be taken into account in the comparative assessment of sites in the Sustainability Appraisal.
- 5.6 Where a 'likely significant effect' is identified, the habitat regulations require that an 'appropriate assessment' is undertaken of the plan's proposals. Therefore, a full 'appropriate assessment' will be undertaken of the plan's proposals (i.e. the preferred sites). At that stage, mitigation measures can be taken into account. The appropriate assessment will determine whether or not the plan's proposals adversely affect the integrity of the designations.

6. Assessment of Impacts on Non-International Designations

- 6.1 This paper has identified nine impact pathways that future development could have on designations and other specified ecological receptors. These impact pathways are:
- Water volume, rates and flow
 - Water quality
 - Disturbance
 - Lighting

- Shading
 - Unsupervised pets
 - Invasive non-native species
 - Isolation and fragmentation of retained habitat on or off site
 - Direct loss of habitat
- 6.2 All sites in the Borough are within a catchment where, prior to mitigation, water quality impacts arising from nutrient level changes would arise. A nutrient budget will be conducted as part of the Habitat Regulations Assessment. Therefore, this impact pathway has not been assessed by this study.
- 6.3 Air quality impacts on ecological receptors will be scored at a later date, after transport and air quality modelling has been carried out.
- 6.4 Each impact pathway has been assessed against their potential impact on the following ecological receptors:
- Sites of Specific Scientific Interest (SSSIs)
 - Sites of Importance for Nature Conservation (SINCs)
 - Ancient woodland (AW)
 - Movement corridors
 - Priority habitats
- 6.5 A parameter table has been produced for each receptor that sets out the methodology used for determining where potential development on a site would result in an impact. These can be viewed in Appendix 1 (SSSI, SINC, AW, movement corridors and priority habitat). Impact has been determined by proximity to the receptor. To avoid double counting of impacts, impacts on movement corridors and priority habitats in the scoring table only consider those outside of the designations (SSSI, SINC and AW).
- 6.6 At this stage, each Strategic Development Option (SDO) has been assessed against the nine impact pathways for the five receptors. A table has been produced for each site and can be viewed in Appendix 2. Each small and medium site has been scored against six of the impact pathways (all except water quality and water volume, rates and flow and direct loss of habitat), for three of the five receptors (SSSIs, SINCs, and Ancient Woodland). A table has been produced for each site and can be viewed in Appendix 3. Scoring of the remaining impact pathways and receptors will be completed prior to the selection of preferred sites.
- 6.7 The impact has been categorised as either: ‘major’, ‘minor’ or ‘no impact’. Only major and minor impacts have been recorded. Where a site has scored as having either a ‘minor’ or a ‘major’ impact, the proportion of the site that scores as having that impact has been recorded. The proportion of the site has been split into ‘low proportion of the site’, ‘around half of the site’, and ‘high proportion of the site’. Where a site scores a ‘major’ impact for a high proportion of the site, it has been assumed there will also be a minor impact on the rest of the site whether it has been recorded or not.

6.8 Sites have been assessed before mitigation. Mitigation measures will be considered further as the Local Plan Review progresses.

6.9 Table 3 below sets out the nine pathways, how they could impact designations and how impact could be mitigated.

Table 3: The Impact Pathways

Impact pathway:	Potential impact:	Potential mitigation:
Water volume, rates and flow paths	Development can lead to changes in surface water run-off rates, volumes and flow paths. These changes can result in negative impacts on ecological habitats and species, such as erosion or a reduction/ increase in available water.	Impact can be mitigated through high-quality, integrated Sustainable Drainage Systems.
Water quality	Development can lead to increased suspended solids, hydrocarbons, heavy metals, nutrients and other pollutants entering surface and ground water and reducing water quality. This has a negative impact on ecology in terms of habitats and species.	Impact can be mitigated through high-quality, integrated Sustainable Drainage Systems.
Disturbance (see note 1)	Disturbance can come in many forms and is the result of anthropogenic influences (including dog walking). Disturbance may include visual impact, physical damage, noise and enrichment through defecation and urination.	All these forms of disturbance can have an impact on ecology in terms of habitats and species. Impact can be mitigated through education, buffer zones, alternative recreational provision, habitat and access management plans. It should be noted that this background paper is a high-level assessment. The potential for impacts will be assessed in more detail at the planning application stage in the light of specific proposals. Therefore the absence of identified impacts in this paper does not necessarily mean there will be no impacts to be mitigated at the detailed site planning stage.

Impact pathway:	Potential impact:	Potential mitigation:
Lighting	Increased artificial lighting can affect habitats, species assemblages, distribution and movement within the landscape.	Impact can be mitigated through buffer zones and dark corridors as well as appropriate lighting specifications.
Shading	Increased shading can affect habitats, species assemblages and distribution.	Impact can be mitigated through good design including considering massing, aspect, heights and distance.
Invasive non-native species (INNS)	INNS impact the species assemblage of ecological communities, outcompete native species and form monocultures. Examples in the Borough include Himalayan Balsam, Laurel, Rhododendron, Mink, Signal Crayfish and Pacific Oysters.	Impact can be mitigated through ongoing management programmes and horizon scanning.
Unsupervised pets	Unsupervised pets can impact species assemblages and habitats with impacts such as predation and disturbance.	Impact can be mitigated through education and buffer zones.
Isolation and fragmentation of retained habitat on or offsite (see note 2)	Isolation results in a decrease in movement of species and increase in habitat fragmentation. This can increase the likelihood of local extinctions and reduced diversity and abundance.	Impact can be mitigated by retaining and improving connectivity and good design.
Direct loss of habitat (see note 3)	Loss of habitat results in reduced species diversity and abundance due to the loss of sufficient places to forage, shelter, breed and hibernate.	Impact can be mitigated by reducing the development footprint and developing areas of lower habitat value.

Notes:

1 - For the purpose of this assessment a number of assumptions have been made. These include that:

- *that there is no designated public parking at the receptor location;*
- *that there is reasonable formal or informal pedestrian access at the receptor.*

In addition, the assessment does not take the size of development site into account.

It should also be noted, that the assessment focuses on local movements on foot and bike. Where SSSIs are also designated as SPAs and SACs, the HRA will assess the full recreational impact.

2 - Isolation and fragmentation of retained on or offsite habitats caused by the removal of onsite functionally linked habitat. Retained onsite habitat comprises designated sites and irreplaceable habitats. Retained offsite habitat comprises all habitat.

3 - There is the presumption that there will be no direct loss of any irreplaceable habitat or habitat within any SSSI or SINC. The potential for the loss of habitat is therefore only assessed for two receptors, these being movement corridors and priority habitats.

7. Commentary

7.1 This section provides a commentary on the impact the SDOs would have on the nine receptors prior to mitigation. Commentaries have not been completed for the small and medium sites as their assessments are incomplete.

Overall commentary on SDOs prior to mitigation

7.2 As an overall summary, table 4 below sets out, based on the whole SDO, the number of impact pathways where a high proportion of the SDO has the potential for a major impact prior to mitigation, broken down by the type of designation.

Table 4: Number of Impact Pathways where a High Proportion of the SDO has a Major Impact, by Type of Designation

SDO	National Designation				Other Designation			Total
	SSSI	Ancient Woodland	Total		SINC	Movement Corridor	Priority Habitat	
A	0	5	5		5	6	5	16
B	3	2	5		1	6	5	12
C	1	5	6		5	6	5	16
D	0	2	2		2	5	4	11

Notes:

Where half the site or the overall site is assessed to have a major impact, this is included in the figures.

The National Designations are those identified in the NPPF (footnote 7) as being areas or assets of particular importance.

- 7.3 The table illustrates that, prior to mitigation, a high proportion of all SDOs have the potential for major impacts on national designations. SDO C, followed by SDOs A and B, would have the most potential for major impacts, and SDO D would have the least potential for major impacts. It is worth noting that SDOs A and D have no potential for impacts on SSSIs.
- 7.4 The table also illustrates that, prior to mitigation, a high proportion of all SDOs have the potential for major impacts on other designations. SDOs A and C would have the most potential for major impacts, followed by SDO B, with SDO D again having the least potential for major impacts.
- 7.5 Table 5 below sets out, based on the whole SDO, the number of impact pathways where a high proportion of the SDO has the potential for a major impact prior to mitigation (using the same definition as set out in the notes to Table 4), broken down by the type of impact pathway.

Table 5: Number of Impact Pathways where a High Proportion of the SDO has a Major Impact, by Type of Impact Pathway

Impact Pathway	SDO				Designation				
	A	B	C	D	SSSI	AW	SINC	MC	PH
Water volume, rate and flow	4	4	4	4	B	All	A, C, D	All	All
Water quality	4	3	4	4	B	A, C, D	A, C, D	All	All
Disturbance	4	2	4	0	-	A, C	A, C	A, B, C	A, B, C
Lighting	0	0	0	0	-	-	-	-	-
Shading	0	0	0	0	-	-	-	-	-
Unsupervised pets	4	2	4	2	-	A, C	A, C	All	All
Invasive non-native species (INNS)	0	0	0	0	-	-	-	-	-
Isolation	4	5	5	2	B, C	A, B, C	A, B, C	All	All
(Designated habitat)	1	1	1	1	-	-	-	All	-

7.6 To re-iterate, Table 5 and the descriptions below focus on incidences where a high proportion of the SDO has the potential for a major impact prior to mitigation. (Where a high proportion of the SDO does not have a major impact, this does not necessarily mean there are no major impacts, simply that these are confined to a low proportion of the SDO).

7.7 Table 5 illustrates that:

- Across a number of impact pathways each of the SDOs have no, or the same limited potential for impacts prior to mitigation:
 - Lighting, disturbance and INNS - none of the SDOs are assessed to have any major impact.
 - Designated habitat – there are no direct losses of habitat but all of the SDOs are assessed to have the potential for 1 major impact (relating to movement corridors linking habitats prior to mitigation).
- Across further impact pathways each of the SDOs have a number of potential impacts prior to mitigation, and that these are very similar for each SDO:
 - Water volume, rate and flow – each SDO has the potential for 4 major impacts prior to mitigation (the only difference being that in the case of SDO B there is an impact on an SSSI, rather than on SINCs).
 - Water quality – the SDOs all have the potential for 4 major impacts prior to mitigation, except for SDO B which has the potential for 3 major impacts (unlike the others, SDO B has a potential impact on an SSSI, but not on ancient woodland or SINCs).
- Across the remaining impact pathways there is a greater variation in the potential impacts of SDOs prior to mitigation:
 - Disturbance / Unsupervised Pets – SDOs A and C have the potential for 4 major impacts prior to mitigation, whereas SDO B only has the potential for 2 major impacts prior to mitigation, and SDO D only has the potential for 2 major impacts prior to mitigation in relation to unsupervised pets (and none in relation to disturbance). (The extra potential for SDOs A and C relates to ancient woodlands and SINCs).
 - Isolation – SDOs B and C have the potential for 5 major impacts prior to mitigation, SDO A has the potential for 4 major impacts prior to mitigation, and SDO D only has the potential for 2 major impacts prior

to mitigation. (The extra potential for SDOs B and C relates to SSSIs, and with SDO A as well, to ancient woodlands and SINCs).

Commentaries on individual SDOs – prior to mitigation

- 7.8 The commentaries for each individual SDO below provide some further detail. They relate to the overall SDO except where stated. However, unlike the overall commentary above, they do draw out where there are some key variations in impacts across different sub areas within an SDO, and also where there are some major impacts across just low proportions of an SDO.

Strategic Development Option A – prior to mitigation

- 7.9 Prior to mitigation, a high proportion of the site would have a major impact on SINCs, ancient woodland, movement corridors and priority habitats from the following impact pathways: unsupervised pets, disturbance, water quality and water volume rate and flow. In addition a low proportion of the site would have a major impact from lighting, shading for all of these receptors except SSSIs. A low proportion of the site would also have a major impact from invasive non-native species on SINCs, movement corridors and priority habitats.
- 7.10 With regard to isolation and fragmentation, prior to mitigation, the whole site would have a major impact on SINCs, ancient woodland, movement corridors and priority habitats. The number of receptors isolated increases the more sub areas of SDO A that are included. For instance, sub area A1 alone would have a major impact from isolation and fragmentation on movement corridors. Once sub area A2 is included, the number of receptors isolated to a major extent would increase to include SINCs and ancient woodland. Sub area A4 would also isolate priority habitats to a major extent.
- 7.11 Prior to mitigation, all sub areas of SDO A would cause both a major and a minor impact on movement corridors connecting designated habitats, because they would affect both primary and secondary corridors / supporting habitat. Sites A2, A3 and A4 would also have a minor impact on priority habitats.
- 7.12 The number of individual receptors impacted increases as each sub area of SDO A is added. For instance, SDO A1 alone has a major impact on approximately six SINCs, whereas the whole SDO area (A1, A2, A3 and A4), would impact approximately twelve SINCs.
- 7.13 Finally, it is worth noting that using the parameters set out above, the whole of SDO A and its sub areas do not impact any SSSI.

Strategic Development Option B – prior to mitigation

- 7.14 Prior to mitigation, a high proportion of the site would cause a major impact on SSSIs, ancient woodland, movement corridors and priority habitats from water volume rate and flow. In addition, a low proportion of the site would have a major impact on SINCs from water volume, rate and flow. There is a similar level of high / low proportion major impacts on water quality, although ancient woodland would not be impacted by water quality.
- 7.15 Prior to mitigation, a high proportion of the site would also have a major impact from disturbance on movement corridors and priority habitat and a low proportion of the site would have a major impact on SSSIs, SINCs and ancient woodland. The impact would be the same if sub area B1a was developed alone. However, if sub area B1b was developed alone, a high proportion of the site would cause a major impact on disturbance for all receptors except SSSIs.
- 7.16 For lighting and shading, a low proportion of the site would have both a major and minor impact on all receptors except SSSIs prior to mitigation. Sub area B1b alone would have the same level of impact. Sub area B1a alone would not impact ancient woodland but a low proportion of the site would have a major and minor impact on SINCs, movement corridors and priority habitat.
- 7.17 In relation to unsupervised pets, prior to mitigation, a high proportion of the site would have a major impact on movement corridors and priority habitat and a low proportion of the site would have a major impact on the River Itchen SSSI, SINCs and ancient woodland. Sub area B1b would not have an impact on SSSIs but sub area B1a would. A high proportion of all SDO B sub areas would also have a minor impact on all receptors except SSSIs.
- 7.18 Prior to mitigation, a low proportion of SDO B would have a major impact on all receptors except SSSIs in relation to invasive non-native species. Sub area B1a alone would not impact ancient woodland.
- 7.19 In relation to isolation and fragmentation, prior to mitigation, sub area B1a would have a major impact on movement corridors and priority habitat whereas sub area B1b would have a major impact on movement corridors only. SDO B as a combined site would have a major impact on all receptors prior to mitigation.
- 7.20 SDO B would also have a major impact on movement corridors connecting designated habitats and a minor impact on both movement corridors and priority habitat. This would be the same across sub areas B1a and B1b individually.
- 7.21 The number of individual receptors impacted would be greater if the whole SDO was developed rather than sub area B1a or B1b individually.

Strategic Development Option C – prior to mitigation

- 7.22 Prior to mitigation, a high proportion of SDO C would have a major impact on all receptors except SSSIs in relation to both water volume, rate and flow and water quality. A low proportion of the site would have a major impact on the River Itchen SSSI. The impact would be the same across the sub areas.
- 7.23 In relation to disturbance, a high proportion of the site would have a major impact on movement corridors and priority habitat. Around half the site would have a major impact on SINCs and ancient woodland and a low proportion of the site would have a major impact on Moorgreen Meadows SSSI. The impact would be the same across the SDO sub areas.
- 7.24 For lighting and shading, a low proportion of the site would have both a major and minor impact on all receptors except SSSIs. The impact would be the same across the SDO sub areas (C1 and C1+C2).
- 7.25 Prior to mitigation, a high proportion of SDO C would have a major impact on all receptors except SSSIs where only a low proportion would have a major impact. The sub area C1 + C2 scores the same. For sub area C1, half the site would have a major impact on both SINCs and ancient woodland.
- 7.26 A low proportion of SDO C would have a major impact on all receptors apart from SSSIs from invasive non-native species. This is the same across the SDO sub areas (C1 and C1+C2).
- 7.27 Prior to mitigation SDO C would have a major impact on all receptors in relation to isolation and fragmentation. The SDO would also have a minor impact on movement corridors and priority habitat. Only the full SDO C site (C1, C2 + C3) would have a major impact on the River Itchen SSSI. Sub areas C1 and C2 would not impact SSSIs in relation to isolation and fragmentation.
- 7.28 SDO C would have a major impact on movement corridors connecting designated habitats and a minor impact on priority habitats. The impact would be the same across all SDO sub areas.
- 7.29 Like SDO A, the number of individual receptors that would be impacted increases as each sub area of SDO C is added.

Strategic Development Option D – prior to mitigation

- 7.30 Prior to mitigation, SDO D would not create a major or minor impact on any SSSI from any of the nine impact pathways.
- 7.31 A high proportion of SDO D would have a major impact on all receptors except SSSIs in relation to both water volume, rate and flow and water quality. The impact would be the same across the SDO sub area D1.

- 7.32 In relation to impact pathways: disturbance, lighting, and shading, a low proportion of the site would have a major impact on SINCs, ancient woodland, movement corridors and priority habitats.
- 7.33 Prior to mitigation, a high proportion of SDO D would have a major impact on movement corridors and priority habitats from unsupervised pets, and a low proportion of the site would have a major impact on SINCs and ancient woodland. The impact would be the same across the SDO sub area D1.
- 7.34 In relation to invasive non-native species, a low proportion of the site would have both a major and a minor impact on all receptors except for SSSIs prior to mitigation. Sub area D1 would have a minor impact from a low proportion of the site. The site would also have a major impact on movement corridors and priority habitats in relation to isolation and fragmentation.
- 7.35 Prior to mitigation, SDO D would have a major impact on movement corridors and a minor impact on both movement corridors and priority habitats. This would be the same for sub area D1 individually.
- 7.36 Finally, the whole SDO would impact slightly more receptors than if sub area D1 was developed alone.

BIODIVERSITY NET GAIN

8. Relevant legislation / policy

- 8.1 The Environment Act (2021) introduces a statutory requirement for development to achieve a 10% biodiversity net gain. Natural England have introduced a biodiversity metric to assess biodiversity net gain.
- 8.2 The Act also introduces a requirement to produce a Local Nature Recovery Strategy, which in this area is being prepared by Hampshire County Council. These plans are a key mechanism for planning and delivering the National Nature Recovery Network. Hampshire's plan will include a map of the most valuable areas for wildlife, opportunities to improve nature in the future and local priorities.
- 8.3 Eastleigh's Draft Biodiversity Strategy 2024 – 2034, as described above, is intended to help inform the preparation of the Local Nature Recovery Strategy.

9. Assessment

- 9.1 The Council intends to undertake an assessment of the potential for development sites to achieve biodiversity net gain as the local plan review progresses. All development sites are required to meet the 10% biodiversity net gain. The intended purpose of the assessment is to assess the potential of sites, particularly the larger sites, to contribute to the wider aims of the Local Nature Recovery Strategy, if they were developed. This is likely to consider the potential (or otherwise) of the site to contribute to and integrate with the protection, enhancement and creation of landscape level ecology networks. The aim is to inform the overall comparative assessment of the merits of different site options for development or continued protection.
- 9.2 The potential proposed approach to the assessment is set out below, and comments are welcome on this approach. It is likely that the approach will evolve in the light of the comments received, the emerging strategies listed above, and experience of applying the assessment to site options. The proposed broad approach suggested below is intended to prompt comments to assist in developing the assessment.

Sources of Information

- 9.3 The potential sources of information will include:
- The emerging Hampshire Local Nature Recovery Strategy;
 - The emerging Eastleigh Biodiversity Strategy 2024 – 2034;
 - Natural England's Biodiversity Metric;
 - Local knowledge / assessment as required.

Site Description

9.4 The designations, habitats and ecological links identified by the sources of information set out above will provide a picture of the existing ecological network in and around the site, and the potential to enhance this network. This will include landscape scale and local links, and the ability of the land itself to achieve a biodiversity uplift.

10. Commentary

10.1 This is likely to emerge through the assessment of sites. A potential approach may be as follows:

Potential of site to achieve Local Nature Recovery Strategy / Biodiversity Net Gain objectives:	Possible score for site	Possible reason
Strong	Poor	It may be better to leave the site undeveloped and secure the potential gains on the site through strategic developer contributions from development elsewhere?
Mixed	Good	If developed, the site may have the potential to integrate with and help deliver gains on those areas with the most potential?
Weak	Uncertain	If the site has weak potential for gains, development would not undermine the objectives, but may be less able to contribute to the objectives?

10.2 It should be restated that this potential approach is set out to prompt discussion. A more detailed consideration on a site-by-site basis may lead to a revised approach.

Appendix 1 – Parameter Tables

SSSI, SINCR, Ancient Woodland, movement corridor and priority habitat parameters:

Impact pathway:	Score:	Definition:
Water volume, rates and flows	Major	Site is inside river catchment area, upstream and within very close proximity to receptor.
	Minor	Site is inside river catchment, upstream and within close proximity to receptor.
	No impact	Site is outside river catchment area or is within catchment area but downstream of receptor.
Water quality	Major	Site is inside river catchment, upstream and within very close proximity to receptor.
	Minor	Site is inside river catchment, upstream and within close proximity to receptor.
	No impact	Site is outside river catchment area or is within catchment area but downstream of receptor.
Disturbance (recreational and other)	Major	Site is in very close proximity to the receptor.
	Uncertain	Site is not within close proximity of the receptor.
Lighting	Major	Site is within very close proximity of designation.
	Minor	N/A
	No impact	Site is not within very close proximity of designation.
Shading	Major	Site is within very close proximity of receptor.
	Minor	N/A
	No impact	Site is not within very close proximity of receptor.
Unsupervised pets	Major	Site is within very close proximity of receptor.
	Minor	Site is within close proximity of receptor.
	No impact	Site is not within close proximity of receptor.
Invasive non-native species	Major	Site is within very close proximity of receptor.
	Minor	Site is within close proximity of receptor.
	No impact	Site is not within close proximity of receptor.

Isolation and fragmentation of retained habitat on or off site	Major	Site causes a major obstruction to connectivity.
	Minor	Site causes a minor obstruction to connectivity.
	No impact	Site does not cause an obstruction to connectivity.
Direct loss of habitat	Major	Site causes a major proportional loss of habitat.
	Minor	Site causes a minor proportional loss of habitat.
	No impact	Site does not cause direct loss of habitat.

Appendix 2 – Interim Scores for Strategic Development Options

SDO A1

Impact Pathway	Score before Mitigation:	Receptors	Impact y/n	Proportion of site
Water Volume, rates and flow	Major	SSSI	n	
		SINC	y	High
		AW	y	High
		Movement corridor	y	High
		Priority habitat	y	High
	Minor	SSSI	n	
		SINC	n	
		AW	n	
		Movement corridor	y	
		Priority habitat	y	
Water Quality	Major	SSSI	n	
		SINC	y	High
		AW	y	High
		Movement corridor	y	High
		Priority habitat	y	High
	Minor	SSSI	n	
		SINC	y	
		AW	y	
		Movement corridor	y	
		Priority habitat	y	
Disturbance (Recreational and other)	Major	SSSI	n	
		SINC	y	High
		AW	y	High
		Movement corridor	y	High
		Priority habitat	y	High
	Uncertain	SSSI		
		SINC		
		AW		
		Movement corridor		
		Priority habitat		
Lighting	Major	SSSI	n	
		SINC	y	Low
		AW	y	Low
		Movement corridor	y	Low
		Priority habitat	y	Low
Shading	Major	SSSI	n	
		SINC	y	Low
		AW	y	Low
		Movement corridor	y	Low
		Priority habitat	y	Low

Unsupervised Pets	Major	SSSI	n	
		SINC	y	High
		AW	y	High
		Movement corridor	y	High
		Priority habitat	y	High
	Minor	SSSI	n	
		SINC	y	
		AW	y	
		Movement corridor	y	
		Priority habitat	y	
Invasive non-native species (INNS)	Major	SSSI	n	
		SINC	y	Low
		AW	y	Low
		Movement corridor	y	Low
		Priority habitat	y	Low
	Minor	SSSI	n	
		SINC	y	
		AW	y	
		Movement corridor	y	
		Priority habitat	y	
Isolation and fragmentation of retained habitat on or off site	Major	SSSI	n	
		SINC	n	
		AW	n	
		Movement corridor	y	
		Priority habitat	n	
	Minor	SSSI	n	
		SINC	y	Yes
		AW	y	Yes
		Movement corridor	y	Yes
		Priority habitat	y	Yes
Direct loss of habitat	Major	SSSI	n	
		SINC	n	
		AW	n	
		Movement corridor	y	Yes
		Priority habitat	n	
	Minor	SSSI	n	
		SINC	n	
		AW	n	
		Movement corridor	y	Yes
		Priority habitat	y	Yes

SDO A1 + A2

Impact Pathway	Score before Mitigation:	Receptors	Impact y/n	Proportion of site
Water Volume, rates and flow	Major	SSSI	n	
		SINC	y	High
		AW	y	High
		Movement corridor	y	High
		Priority habitat	y	High
	Minor	SSSI	n	
		SINC	y	
		AW	y	
		Movement corridor	y	
		Priority habitat	y	
Water Quality	Major	SSSI	n	
		SINC	y	High
		AW	y	High
		Movement corridor	y	High
		Priority habitat	y	High
	Minor	SSSI	n	
		SINC	y	
		AW	y	
		Movement corridor	y	
		Priority habitat	y	
Disturbance (Recreational and other)	Major	SSSI	n	
		SINC	y	High
		AW	y	High
		Movement corridor	y	High
		Priority habitat	y	High
	Uncertain	SSSI		
		SINC		
		AW		
		Movement corridor		
		Priority habitat		
Lighting	Major	SSSI	n	
		SINC	y	Low
		AW	y	Low
		Movement corridor	y	Low
		Priority habitat	y	Low
Shading	Major	SSSI	n	
		SINC	y	Low
		AW	y	Low
		Movement corridor	y	Low
		Priority habitat	y	Low

Unsupervised Pets	Major	SSSI	n	
		SINC	y	High
		AW	y	High
		Movement corridor	y	High
		Priority habitat	y	High
	Minor	SSSI	n	
		SINC	y	
		AW	y	
		Movement corridor	y	
		Priority habitat	y	
Invasive non-native species (INNS)	Major	SSSI	n	
		SINC	y	Low
		AW	y	Low
		Movement corridor	y	Low
		Priority habitat	y	Low
	Minor	SSSI	n	
		SINC	y	
		AW	y	
		Movement corridor	y	
		Priority habitat	y	
Isolation and fragmentation of retained habitat on or off site	Major	SSSI	n	No
		SINC	y	Yes
		AW	y	Yes
		Movement corridor	y	Yes
		Priority habitat	n	No
	Minor	SSSI	n	No
		SINC	y	Yes
		AW	y	Yes
		Movement corridor	y	Yes
		Priority habitat	y	Yes
Direct loss of habitat	Major	SSSI	n	
		SINC	n	
		AW	n	
		Movement corridor	y	Yes
		Priority habitat	n	
	Minor	SSSI	n	
		SINC	n	
		AW	n	
		Movement corridor	y	Yes
		Priority habitat	y	Yes

SDO A1 + A2 + A3

Impact Pathway	Score before Mitigation:	Receptors	Impact y/n	Proportion of site
Water Volume, rates and flow	Major	SSSI	n	
		SINC	y	High
		AW	y	High
		Movement corridor	y	High
		Priority habitat	y	High
	Minor	SSSI	n	
		SINC	y	
		AW	y	
		Movement corridor	y	
		Priority habitat	y	Low
Water Quality	Major	SSSI	n	
		SINC	y	High
		AW	y	High
		Movement corridor	y	High
		Priority habitat	y	High
	Minor	SSSI	n	
		SINC	y	
		AW	y	
		Movement corridor	y	
		Priority habitat	y	Low
Disturbance (Recreational and other)	Major	SSSI	n	
		SINC	y	High
		AW	y	High
		Movement corridor	y	High
		Priority habitat	y	High
	Uncertain	SSSI		
		SINC		
		AW		
		Movement corridor		
		Priority habitat		
Lighting	Major	SSSI	n	
		SINC	y	Low
		AW	y	Low
		Movement corridor	y	Low
		Priority habitat	y	Low
Shading	Major	SSSI	n	
		SINC	y	Low
		AW	y	Low
		Movement corridor	y	Low
		Priority habitat	y	Low

Unsupervised Pets	Major	SSSI	n	
		SINC	y	High
		AW	y	High
		Movement corridor	y	High
		Priority habitat	y	High
	Minor	SSSI	n	
		SINC	y	
		AW	y	
		Movement corridor	y	
		Priority habitat	y	
Invasive non-native species (INNS)	Major	SSSI	n	
		SINC	y	Low
		AW	y	Low
		Movement corridor	y	Low
		Priority habitat	y	Low
	Minor	SSSI	n	
		SINC	y	
		AW	y	
		Movement corridor	y	
		Priority habitat	y	
Isolation and fragmentation of retained habitat on or off site	Major	SSSI	n	No
		SINC	y	Yes
		AW	y	Yes
		Movement corridor	y	Yes
		Priority habitat	n	No
	Minor	SSSI	n	No
		SINC	y	Yes
		AW	y	Yes
		Movement corridor	y	Yes
		Priority habitat	y	Yes
Direct loss of habitat	Major	SSSI	n	
		SINC	n	
		AW	n	
		Movement corridor	y	Yes
		Priority habitat	n	
	Minor	SSSI	n	
		SINC	n	
		AW	n	
		Movement corridor	y	Yes
		Priority habitat	y	Yes

SDO A1 + A2 + A3 + A4

Impact Pathway	Score before Mitigation:	Receptors	Impact y/n	Proportion of site
Water Volume, rates and flow	Major	SSSI	n	
		SINC	y	High
		AW	y	High
		Movement corridor	y	High
		Priority habitat	y	High
	Minor	SSSI	n	
		SINC	y	Low
		AW	y	
		Movement corridor	y	
		Priority habitat	y	Low
Water Quality	Major	SSSI	n	
		SINC	y	High
		AW	y	High
		Movement corridor	y	High
		Priority habitat	y	High
	Minor	SSSI	n	
		SINC	y	Low
		AW	y	
		Movement corridor	y	
		Priority habitat	y	Low
Disturbance (Recreational and other)	Major	SSSI	n	
		SINC	y	High
		AW	y	High
		Movement corridor	y	High
		Priority habitat	y	High
	Uncertain	SSSI		
		SINC		
		AW		
		Movement corridor		
		Priority habitat		
Lighting	Major	SSSI	n	
		SINC	y	Low
		AW	y	Low
		Movement corridor	y	Low
		Priority habitat	y	Low
Shading	Major	SSSI	n	
		SINC	y	Low
		AW	y	Low
		Movement corridor	y	Low
		Priority habitat	y	Low

Unsupervised Pets	Major	SSSI	n	
		SINC	y	High
		AW	y	High
		Movement corridor	y	High
		Priority habitat	y	High
	Minor	SSSI	n	
		SINC	y	
		AW	y	
		Movement corridor	y	
		Priority habitat	y	
Invasive non-native species (INNS)	Major	SSSI	n	
		SINC	y	Low
		AW	y	Low
		Movement corridor	y	Low
		Priority habitat	y	Low
	Minor	SSSI	n	
		SINC	y	
		AW	y	
		Movement corridor	y	
		Priority habitat	y	
Isolation and fragmentation of retained habitat on or off site	Major	SSSI	n	
		SINC	y	Yes
		AW	y	Yes
		Movement corridor	y	Yes
		Priority habitat	y	Yes
	Minor	SSSI	n	
		SINC	y	Yes
		AW	y	Yes
		Movement corridor	y	Yes
		Priority habitat	y	Yes
Direct loss of habitat	Major	SSSI	n	
		SINC	n	
		AW	n	
		Movement corridor	y	Yes
		Priority habitat	n	
	Minor	SSSI	n	
		SINC	n	
		AW	n	
		Movement corridor	y	Yes
		Priority habitat	y	Yes

SDO B1a

Impact Pathway	Score before Mitigation:	Receptors	Impact y/n	Proportion of site
Water Volume, rates and flow	Major	SSSI	y	High
		SINC	y	Low
		AW	n	
		Movement corridor	y	High
		Priority habitat	y	High
	Minor	SSSI	y	High
		SINC	y	Low
		AW	n	
		Movement corridor	y	High
		Priority habitat	y	High
Water Quality	Major	SSSI	y	High
		SINC	y	Low
		AW	n	
		Movement corridor	y	High
		Priority habitat	y	High
	Minor	SSSI	y	High
		SINC	y	Low
		AW	n	
		Movement corridor	y	High
		Priority habitat	y	High
Disturbance (Recreational and other)	Major	SSSI	y	Low
		SINC	y	Low
		AW	n	
		Movement corridor	y	High
		Priority habitat	y	High
	Uncertain	SSSI		
		SINC		
		AW		
		Movement corridor		
		Priority habitat		
Lighting	Major	SSSI	n	
		SINC	y	Low
		AW	n	
		Movement corridor	y	Low
		Priority habitat	y	Low
Shading	Major	SSSI	n	
		SINC	y	Low
		AW	n	
		Movement corridor	y	Low
		Priority habitat	y	Low

Unsupervised Pets	Major	SSSI	y	Low
		SINC	y	Low
		AW	n	
		Movement corridor	y	High
		Priority habitat	y	High
	Minor	SSSI	y	Low
		SINC		High
		AW		High
		Movement corridor		High
		Priority habitat		High
Invasive non-native species (INNS)	Major	SSSI	n	
		SINC	y	Low
		AW	n	
		Movement corridor	y	Low
		Priority habitat	y	Low
	Minor	SSSI	n	
		SINC	y	
		AW	n	
		Movement corridor	y	
		Priority habitat	y	
Isolation and fragmentation of retained habitat on or off site	Major	SSSI	n	
		SINC	n	
		AW	n	
		Movement corridor	y	
		Priority habitat	y	
	Minor	SSSI	n	
		SINC	y	
		AW	n	
		Movement corridor	y	
		Priority habitat	y	
Direct loss of habitat	Major	SSSI	n	
		SINC	n	
		AW	n	
		Movement corridor	y	
		Priority habitat	n	
	Minor	SSSI	n	
		SINC	n	
		AW	n	
		Movement corridor	y	
		Priority habitat	y	

SDO B1b

Impact Pathway	Score before Mitigation:	Receptors	Impact y/n	Proportion of site
Water Volume, rates and flow	Major	SSSI	n	
		SINC	y	High
		AW	y	High
		Movement corridor	n	High
		Priority habitat	y	High
	Minor	SSSI	y	High
		SINC	n	
		AW	n	
		Movement corridor	y	High
		Priority habitat	y	High
Water Quality	Major	SSSI	n	
		SINC	y	High
		AW	y	High
		Movement corridor	n	High
		Priority habitat	y	High
	Minor	SSSI	y	High
		SINC	n	
		AW	n	
		Movement corridor	y	High
		Priority habitat	y	High
Disturbance (Recreational and other)	Major	SSSI	n	
		SINC	y	High
		AW	y	High
		Movement corridor	y	High
		Priority habitat	y	High
	Uncertain	SSSI		
		SINC		High
		AW		High
		Movement corridor		High
		Priority habitat		High
Lighting	Major	SSSI	n	
		SINC	y	Low
		AW	y	Low
		Movement corridor	y	Low
		Priority habitat	y	Low
Shading	Major	SSSI	n	
		SINC	y	Low
		AW	y	Low
		Movement corridor	y	Low
		Priority habitat	y	Low

Unsupervised Pets	Major	SSSI	n	
		SINC	y	Low
		AW	y	Low
		Movement corridor	y	High
		Priority habitat	y	High
	Minor	SSSI		
		SINC		High
		AW		High
		Movement corridor		High
		Priority habitat		High
Invasive non-native species (INNS)	Major	SSSI	n	
		SINC	y	Low
		AW	y	Low
		Movement corridor	y	Low
		Priority habitat	y	Low
	Minor	SSSI	n	
		SINC	y	Low
		AW	y	
		Movement corridor	y	
		Priority habitat	y	
Isolation and fragmentation of retained habitat on or off site	Major	SSSI	n	
		SINC	n	
		AW	n	
		Movement corridor	y	
		Priority habitat	n	
	Minor	SSSI	n	
		SINC	y	
		AW	y	
		Movement corridor	y	
		Priority habitat	y	
Direct loss of habitat	Major	SSSI	n	
		SINC	n	
		AW	n	
		Movement corridor	y	
		Priority habitat	n	
	Minor	SSSI	n	
		SINC	n	
		AW	n	
		Movement corridor	y	
		Priority habitat	y	

SDO B1a + B1b + B2

Impact Pathway	Score before Mitigation:	Receptors	Impact y/n	Proportion of site
Water Volume, rates and flow	Major	SSSI	y	High
		SINC	y	Low
		AW	y	High
		Movement corridor	y	High
		Priority habitat	y	High
	Minor	SSSI	y	High
		SINC	y	Low
		AW	y	
		Movement corridor	y	High
		Priority habitat	y	High
Water Quality	Major	SSSI	y	High
		SINC	y	Low
		AW	n	
		Movement corridor	y	High
		Priority habitat	y	High
	Minor	SSSI	y	High
		SINC	y	Low
		AW	n	
		Movement corridor	y	High
		Priority habitat	y	High
Disturbance (Recreational and other)	Major	SSSI	y	Low
		SINC	y	Low
		AW	y	Low
		Movement corridor	y	High
		Priority habitat	y	High
	Uncertain	SSSI		
		SINC		
		AW		
		Movement corridor		
		Priority habitat		
Lighting	Major	SSSI	n	
		SINC	y	Low
		AW	y	Low
		Movement corridor	y	Low
		Priority habitat	y	Low
Shading	Major	SSSI	n	
		SINC	y	Low
		AW	y	Low
		Movement corridor	y	Low
		Priority habitat	y	Low

Unsupervised Pets	Major	SSSI	y	Low
		SINC	y	Low
		AW	y	Low
		Movement corridor	y	High
		Priority habitat	y	High
	Minor	SSSI		Low
		SINC		High
		AW		High
		Movement corridor		High
		Priority habitat		High
Invasive non-native species (INNS)	Major	SSSI	n	
		SINC	y	Low
		AW	y	Low
		Movement corridor	y	Low
		Priority habitat	y	Low
	Minor	SSSI	n	
		SINC	y	
		AW	y	
		Movement corridor	y	
		Priority habitat	y	
Isolation and fragmentation of retained habitat on or off site	Major	SSSI	y	
		SINC	y	
		AW	y	
		Movement corridor	y	
		Priority habitat	y	
	Minor	SSSI	y	
		SINC	y	
		AW	y	
		Movement corridor	y	
		Priority habitat	y	
Direct loss of habitat	Major	SSSI	n	
		SINC	n	
		AW	n	
		Movement corridor	y	
		Priority habitat	n	
	Minor	SSSI	n	
		SINC	n	
		AW	n	
		Movement corridor	y	
		Priority habitat	y	

SDO C1

Impact Pathway	Score before Mitigation:	Receptors	Impact y/n	Proportion of site
Water Volume, rates and flow	Major	SSSI	y	Low
		SINC	y	High
		AW	y	High
		Movement corridor	y	High
		Priority habitat	y	High
	Minor	SSSI	y	High
		SINC	y	High
		AW	y	High
		Movement corridor	y	
		Priority habitat	y	
Water Quality	Major	SSSI	y	Low
		SINC	y	High
		AW	y	High
		Movement corridor	y	High
		Priority habitat	y	High
	Minor	SSSI	y	High
		SINC	y	High
		AW	y	High
		Movement corridor	y	
		Priority habitat	y	Low
Disturbance (Recreational and other)	Major	SSSI	y	Low
		SINC	y	Half
		AW	y	Half
		Movement corridor	y	High
		Priority habitat	y	High
	Uncertain	SSSI		
		SINC		
		AW		
		Movement corridor		
		Priority habitat		
Lighting	Major	SSSI	n	
		SINC	y	Low
		AW	y	Low
		Movement corridor	y	Low
		Priority habitat	y	Low
Shading	Major	SSSI	n	
		SINC	y	Low
		AW	y	Low
		Movement corridor	y	Low
		Priority habitat	y	Low

Unsupervised Pets	Major	SSSI	y	Low
		SINC	y	Half
		AW	y	Half
		Movement corridor	y	High
		Priority habitat	y	High
	Minor	SSSI	y	Low
		SINC	y	
		AW	y	
		Movement corridor	y	
		Priority habitat	y	
Invasive non-native species (INNS)	Major	SSSI	n	
		SINC	y	Low
		AW	y	Low
		Movement corridor	y	Low
		Priority habitat	y	Low
	Minor	SSSI	y	
		SINC	y	
		AW	y	
		Movement corridor	y	
		Priority habitat	y	
Isolation and fragmentation of retained habitat on or off site	Major	SSSI	n	
		SINC	y	Yes
		AW	y	Yes
		Movement corridor	y	Yes
		Priority habitat	y	Yes
	Minor	SSSI	n	
		SINC	n	
		AW	n	
		Movement corridor	y	
		Priority habitat	y	
Direct loss of habitat	Major	SSSI	n	
		SINC	n	
		AW	n	
		Movement corridor	y	
		Priority habitat	n	
	Minor	SSSI	n	
		SINC	n	
		AW	n	
		Movement corridor	n	
		Priority habitat	y	

SDO C1 + C2

Impact Pathway	Score before Mitigation:	Receptors	Impact y/n	Proportion of site
Water Volume, rates and flow	Major	SSSI	y	Low
		SINC	y	High
		AW	y	High
		Movement corridor	y	High
		Priority habitat	y	High
	Minor	SSSI	y	High
		SINC	y	High
		AW	y	High
		Movement corridor	y	
		Priority habitat	y	
Water Quality	Major	SSSI	y	Low
		SINC	y	High
		AW	y	High
		Movement corridor	y	High
		Priority habitat	y	High
	Minor	SSSI	y	High
		SINC	y	High
		AW	y	High
		Movement corridor	y	
		Priority habitat	y	
Disturbance (Recreational and other)	Major	SSSI	y	Low
		SINC	y	Half
		AW	y	Half
		Movement corridor	y	High
		Priority habitat	y	High
	Uncertain	SSSI		
		SINC		
		AW		
		Movement corridor		
		Priority habitat		
Lighting	Major	SSSI	n	
		SINC	y	Low
		AW	y	Low
		Movement corridor	y	Low
		Priority habitat	y	Low
Shading	Major	SSSI	n	
		SINC	y	Low
		AW	y	Low
		Movement corridor	y	Low
		Priority habitat	y	Low

Unsupervised Pets	Major	SSSI	y	Low
		SINC	y	High
		AW	y	High
		Movement corridor	y	High
		Priority habitat	y	High
	Minor	SSSI	y	Low
		SINC	y	
		AW	y	
		Movement corridor	y	
		Priority habitat	y	
Invasive non-native species (INNS)	Major	SSSI	n	
		SINC	y	Low
		AW	y	Low
		Movement corridor	y	Low
		Priority habitat	y	Low
	Minor	SSSI	n	
		SINC	y	
		AW	y	
		Movement corridor	y	
		Priority habitat	y	
Isolation and fragmentation of retained habitat on or off site	Major	SSSI	n	
		SINC	y	Yes
		AW	y	Yes
		Movement corridor	y	Yes
		Priority habitat	y	Yes
	Minor	SSSI	n	
		SINC	n	
		AW	n	
		Movement corridor	y	
		Priority habitat	y	
Direct loss of habitat	Major	SSSI	n	
		SINC	n	
		AW	n	
		Movement corridor	y	
		Priority habitat	n	
	Minor	SSSI	n	
		SINC	n	
		AW	n	
		Movement corridor	n	
		Priority habitat	y	

SDO C1 + C2 + C3

Impact Pathway	Score before Mitigation:	Receptors	Impact y/n	Proportion of site
Water Volume, rates and flow	Major	SSSI	y	Low
		SINC	y	High
		AW	y	High
		Movement corridor	y	High
		Priority habitat	y	High
	Minor	SSSI	y	High
		SINC	y	High
		AW	y	High
		Movement corridor	y	
		Priority habitat	y	
Water Quality	Major	SSSI	y	Low
		SINC	y	High
		AW	y	High
		Movement corridor	y	High
		Priority habitat	y	High
	Minor	SSSI	y	High
		SINC	y	High
		AW	y	High
		Movement corridor	y	
		Priority habitat	y	
Disturbance (Recreational and other)	Major	SSSI	y	Low
		SINC	y	Half
		AW	y	Half
		Movement corridor	y	High
		Priority habitat	y	High
	Uncertain	SSSI		
		SINC		
		AW		
		Movement corridor		
		Priority habitat		
Lighting	Major	SSSI	n	
		SINC	y	Low
		AW	y	Low
		Movement corridor	y	Low
		Priority habitat	y	Low
Shading	Major	SSSI	n	
		SINC	y	Low
		AW	y	Low
		Movement corridor	y	Low
		Priority habitat	y	Low

Unsupervised Pets	Major	SSSI	y	Low
		SINC	y	High
		AW	y	High
		Movement corridor	y	High
		Priority habitat	y	High
	Minor	SSSI	y	Low
		SINC	y	
		AW	y	
		Movement corridor	y	
		Priority habitat	y	
Invasive non-native species (INNS)	Major	SSSI	n	
		SINC	y	Low
		AW	y	Low
		Movement corridor	y	Low
		Priority habitat	y	Low
	Minor	SSSI	n	
		SINC	y	
		AW	y	
		Movement corridor	y	
		Priority habitat	y	
Isolation and fragmentation of retained habitat on or off site	Major	SSSI	y	
		SINC	y	Yes
		AW	y	Yes
		Movement corridor	y	Yes
		Priority habitat	y	Yes
	Minor	SSSI	n	
		SINC	n	
		AW	n	
		Movement corridor	y	
		Priority habitat	y	
Direct loss of habitat	Major	SSSI	n	
		SINC	n	
		AW	n	
		Movement corridor	y	
		Priority habitat	n	
	Minor	SSSI	n	
		SINC	n	
		AW	n	
		Movement corridor	n	
		Priority habitat	y	

SDO D1

Impact Pathway	Score before Mitigation:	Receptors	Impact y/n	Proportion of site
Water Volume, rates and flow	Major	SSSI	n	
		SINC	y	High
		AW	y	High
		Movement corridor	y	High
		Priority habitat	y	High
	Minor	SSSI	n	
		SINC	y	Low
		AW	y	
		Movement corridor	y	
		Priority habitat	y	
Water Quality	Major	SSSI	n	
		SINC	y	High
		AW	y	High
		Movement corridor	y	High
		Priority habitat	y	High
	Minor	SSSI	n	
		SINC	y	Low
		AW	y	
		Movement corridor	y	
		Priority habitat	y	
Disturbance (Recreational and other)	Major	SSSI	n	
		SINC	y	Low
		AW	y	Low
		Movement corridor	y	High
		Priority habitat	y	High
	Minor	SSSI		
		SINC		
		AW		
		Movement corridor		
		Priority habitat		
Lighting	Major	SSSI	n	
		SINC	y	Low
		AW	y	Low
		Movement corridor	y	Low
		Priority habitat	y	Low
Shading	Major	SSSI	n	
		SINC	y	Low
		AW	y	Low
		Movement corridor	y	Low
		Priority habitat	y	Low

Unsupervised Pets	Major	SSSI	n	
		SINC	y	Low
		AW	y	Low
		Movement corridor	y	High
		Priority habitat	y	High
	Minor	SSSI	n	
		SINC	y	Half
		AW	y	
		Movement corridor	y	
		Priority habitat	y	
Invasive non-native species (INNS)	Major	SSSI	n	
		SINC	y	Low
		AW	y	Low
		Movement corridor	y	Low
		Priority habitat	y	Low
	Minor	SSSI	n	
		SINC	y	
		AW	y	
		Movement corridor	y	
		Priority habitat	y	
Isolation and fragmentation of retained habitat on or off site	Major	SSSI	n	
		SINC	n	
		AW	n	
		Movement corridor	y	
		Priority habitat	y	
	Minor	SSSI	n	
		SINC	n	
		AW	n	
		Movement corridor	y	
		Priority habitat	y	
Direct loss of habitat	Major	SSSI	n	
		SINC	n	
		AW	n	
		Movement corridor	y	
		Priority habitat	n	
	Minor	SSSI	n	
		SINC	n	
		AW	n	
		Movement corridor	y	
		Priority habitat	y	

SDO D1 + D2

Impact Pathway	Score before Mitigation:	Receptors	Impact y/n	Proportion of site
Water Volume, rates and flow	Major	SSSI	n	
		SINC	y	High
		AW	y	High
		Movement corridor	y	High
		Priority habitat	y	High
	Minor	SSSI	n	
		SINC	y	Low
		AW	y	
		Movement corridor	y	
		Priority habitat	y	
Water Quality	Major	SSSI	n	
		SINC	y	High
		AW	y	High
		Movement corridor	y	High
		Priority habitat	y	High
	Minor	SSSI	n	
		SINC	y	Low
		AW	y	
		Movement corridor	y	
		Priority habitat	y	
Disturbance (Recreational and other)	Major	SSSI	n	
		SINC	y	Low
		AW	y	Low
		Movement corridor	y	High
		Priority habitat	y	High
	Minor	SSSI		
		SINC		
		AW		
		Movement corridor		
		Priority habitat		
Lighting	Major	SSSI	n	
		SINC	y	Low
		AW	y	Low
		Movement corridor	y	Low
		Priority habitat	y	Low
Shading	Major	SSSI	n	
		SINC	y	Low
		AW	y	Low
		Movement corridor	y	Low
		Priority habitat	y	Low

Unsupervised Pets	Major	SSSI	n	
		SINC	y	Low
		AW	y	Low
		Movement corridor	y	High
		Priority habitat	y	High
	Minor	SSSI	n	
		SINC	y	Half
		AW	y	Half
		Movement corridor	y	
		Priority habitat	y	
Invasive non-native species (INNS)	Major	SSSI	n	
		SINC	y	Low
		AW	y	Low
		Movement corridor	y	Low
		Priority habitat	y	Low
	Minor	SSSI	n	
		SINC	y	
		AW	y	
		Movement corridor	y	
		Priority habitat	y	
Isolation and fragmentation of retained habitat on or off site	Major	SSSI	n	
		SINC	n	
		AW	n	
		Movement corridor	y	
		Priority habitat	y	
	Minor	SSSI	n	
		SINC	n	
		AW	n	
		Movement corridor	y	
		Priority habitat	y	
Direct loss of habitat	Major	SSSI	n	
		SINC	n	
		AW	n	
		Movement corridor	y	
		Priority habitat	n	
	Minor	SSSI	n	
		SINC	n	
		AW	n	
		Movement corridor	y	
		Priority habitat	y	

Appendix 3 – Interim Scores for Small and Medium Site Options

SITE 1

Impact Pathway	Score before Mitigation:	Receptors	Impact y/n	Proportion of site
Water Volume, rates and flow	Major	SSSI		
		SINC		
		AW		
		Movement corridor		
		Priority habitat		
	Minor	SSSI		
		SINC		
		AW		
		Movement corridor		
		Priority habitat		
Water Quality	Major	SSSI		
		SINC		
		AW		
		Movement corridor		
		Priority habitat		
	Minor	SSSI		
		SINC		
		AW		
		Movement corridor		
		Priority habitat		
Disturbance (Recreational and other)	Major	SSSI	y	High
		SINC	y	High
		AW	y	High
		Movement corridor		
		Priority habitat		
	Uncertain	SSSI		
		SINC		
		AW		
		Movement corridor		
		Priority habitat		
Lighting	Major	SSSI	y	Low
		SINC	y	Low
		AW	y	Low
		Movement corridor		
		Priority habitat		
Shading	Major	SSSI	y	Low
		SINC	y	Low
		AW	y	Low
		Movement corridor		
		Priority habitat		

Unsupervised Pets	Major	SSSI	y	High
		SINC	y	High
		AW	y	High
		Movement corridor		
		Priority habitat		
	Minor	SSSI	y	Low
		SINC	y	Low
		AW	y	Low
		Movement corridor		
		Priority habitat		
Invasive non-native species (INNS)	Major	SSSI	y	Low
		SINC	y	Low
		AW	y	Low
		Movement corridor	y	Low
		Priority habitat	y	Low
	Minor	SSSI	y	Low
		SINC	y	Low
		AW	y	Low
		Movement corridor		
		Priority habitat		
Isolation and fragmentation of retained habitat on or off site	Major	SSSI	y	N/A
		SINC	y	N/A
		AW	y	N/A
		Movement corridor		
		Priority habitat		
	Minor	SSSI	y	N/A
		SINC	y	N/A
		AW	y	N/A
		Movement corridor		
		Priority habitat		
Direct loss of habitat	Major	SSSI		
		SINC		
		AW		
		Movement corridor		
		Priority habitat		
	Minor	SSSI		
		SINC		
		AW		
		Movement corridor		
		Priority habitat		

SITE 2

Impact Pathway	Score before Mitigation:	Receptors	Impact y/n	Proportion of site
Water Volume, rates and flow	Major	SSSI		
		SINC		
		AW		
		Movement corridor		
		Priority habitat		
	Minor	SSSI		
		SINC		
		AW		
		Movement corridor		
		Priority habitat		
Water Quality	Major	SSSI		
		SINC		
		AW		
		Movement corridor		
		Priority habitat		
	Minor	SSSI		
		SINC		
		AW		
		Movement corridor		
		Priority habitat		
Disturbance (Recreational and other)	Major	SSSI	n	
		SINC	y	High
		AW	y	High
		Movement corridor		
		Priority habitat		
	Uncertain	SSSI		
		SINC		
		AW		
		Movement corridor		
		Priority habitat		
Lighting	Major	SSSI	n	
		SINC	y	Low
		AW	y	Low
		Movement corridor		
		Priority habitat		
Shading	Major	SSSI	n	
		SINC	y	Low
		AW	y	Low
		Movement corridor		
		Priority habitat		

Unsupervised Pets	Major	SSSI	n	
		SINC	y	High
		AW	y	High
		Movement corridor		
		Priority habitat		
	Minor	SSSI	n	
		SINC	y	High
		AW	y	High
		Movement corridor		
		Priority habitat		
Invasive non-native species (INNS)	Major	SSSI	n	
		SINC	y	Low
		AW	y	Low
		Movement corridor		
		Priority habitat		
	Minor	SSSI	n	
		SINC	y	Low
		AW	y	Low
		Movement corridor		
		Priority habitat		
Isolation and fragmentation of retained habitat on or off site	Major	SSSI	n	N/A
		SINC	n	N/A
		AW	n	N/A
		Movement corridor		
		Priority habitat		
	Minor	SSSI	n	N/A
		SINC	y	N/A
		AW	y	N/A
		Movement corridor		
		Priority habitat		
Direct loss of habitat	Major	SSSI		
		SINC		
		AW		
		Movement corridor		
		Priority habitat		
	Minor	SSSI		
		SINC		
		AW		
		Movement corridor		
		Priority habitat		

SITE 3

Impact Pathway	Score before Mitigation:	Receptors	Impact y/n	Proportion of site
Water Volume, rates and flow	Major	SSSI		
		SINC		
		AW		
		Movement corridor		
		Priority habitat		
	Minor	SSSI		
		SINC		
		AW		
		Movement corridor		
		Priority habitat		
Water Quality	Major	SSSI		
		SINC		
		AW		
		Movement corridor		
		Priority habitat		
	Minor	SSSI		
		SINC		
		AW		
		Movement corridor		
		Priority habitat		
Disturbance (Recreational and other)	Major	SSSI	n	No Impact
		SINC	n	No Impact
		AW	y	Low
		Movement corridor		
		Priority habitat		
	Uncertain	SSSI		
		SINC		
		AW		
		Movement corridor		
		Priority habitat		
Lighting	Major	SSSI		No Impact
		SINC		No Impact
		AW		No Impact
		Movement corridor		
		Priority habitat		
Shading	Major	SSSI		No Impact
		SINC		No Impact
		AW		No Impact
		Movement corridor		
		Priority habitat		

Unsupervised Pets	Major	SSSI		No Impact
		SINC		No Impact
		AW		Low
		Movement corridor		
		Priority habitat		
	Minor	SSSI		No Impact
		SINC		High
		AW		High
		Movement corridor		
		Priority habitat		
Invasive non-native species (INNS)	Major	SSSI		No Impact
		SINC		No Impact
		AW		No Impact
		Movement corridor		
		Priority habitat		
	Minor	SSSI		No Impact
		SINC		No Impact
		AW		No Impact
		Movement corridor		
		Priority habitat		
Isolation and fragmentation of retained habitat on or off site	Major	SSSI	n	N/A
		SINC	n	N/A
		AW	n	N/A
		Movement corridor		
		Priority habitat		
	Minor	SSSI	n	N/A
		SINC	y	N/A
		AW	y	N/A
		Movement corridor		
		Priority habitat		
Direct loss of habitat	Major	SSSI		
		SINC		
		AW		
		Movement corridor		
		Priority habitat		
	Minor	SSSI		
		SINC		
		AW		
		Movement corridor		
		Priority habitat		

SITE 4

Impact Pathway	Score before Mitigation:	Receptors	Impact y/n	Proportion of site	
Water Volume, rates and flow	Major	SSSI			
		SINC			
		AW			
		Movement corridor			
		Priority habitat			
	Minor	SSSI			
		SINC			
		AW			
		Movement corridor			
		Priority habitat			
Water Quality	Major	SSSI			
		SINC			
		AW			
		Movement corridor			
		Priority habitat			
	Minor	SSSI			
		SINC			
		AW			
		Movement corridor			
		Priority habitat			
Disturbance (Recreational and other)	Major	SSSI		No Impact	
		SINC		No Impact	
		AW		High	
		Movement corridor			
		Priority habitat			
	Uncertain	SSSI			
		SINC			
		AW			
		Movement corridor			
		Priority habitat			

Lighting	Major	SSSI		No Impact
		SINC		No Impact
		AW		Low
		Movement corridor		
		Priority habitat		
Shading	Major	SSSI		No Impact
		SINC		No Impact
		AW		Low
		Movement corridor		
		Priority habitat		
Unsupervised Pets	Major	SSSI		No Impact
		SINC		No Impact
		AW		High
		Movement corridor		
		Priority habitat		
	Minor	SSSI		No Impact
		SINC		No Impact
		AW		N/A Major
Priority habitat			N/A Major	
Invasive non- native species (INNS)	Major	SSSI		No Impact
		SINC		No Impact
		AW		Low
		Movement corridor		
		Priority habitat		
	Minor	SSSI		No Impact
		SINC		No Impact
		AW		Low
		Movement corridor		
		Priority habitat		

Isolation and fragmentation of retained habitat on or off site	Major	SSSI	n	N/A
		SINC	n	N/A
		AW	n	N/A
		Movement corridor		
		Priority habitat		
	Minor	SSSI	n	N/A
		SINC	y	N/A
		AW	y	N/A
		Movement corridor		
		Priority habitat		
Direct loss of habitat	Major	SSSI		
		SINC		
		AW		
		Movement corridor		
		Priority habitat		
	Minor	SSSI		
		SINC		
		AW		
		Movement corridor		
		Priority habitat		

SITE 5

Impact Pathway	Score before Mitigation:	Receptors	Impact y/n	Proportion of site
Water Volume, rates and flow	Major	SSSI		
		SINC		
		AW		
		Movement corridor		
		Priority habitat		
	Minor	SSSI		
		SINC		
		AW		
		Movement corridor		
		Priority habitat		
Water Quality	Major	SSSI		
		SINC		
		AW		
		Movement corridor		
		Priority habitat		
	Minor	SSSI		
		SINC		
		AW		
		Movement corridor		
		Priority habitat		
Disturbance (Recreational and other)	Major	SSSI		High
		SINC		High
		AW		No Impact
		Movement corridor		
		Priority habitat		
	Uncertain	SSSI		
		SINC		
		AW		
		Movement corridor		
		Priority habitat		
Lighting	Major	SSSI		Low
		SINC		Low
		AW		No Impact
		Movement corridor		
		Priority habitat		
Shading	Major	SSSI		Low
		SINC		Low
		AW		No Impact
		Movement corridor		
		Priority habitat		

Unsupervised Pets	Major	SSSI		High
		SINC		High
		AW		No Impact
		Movement corridor		
		Priority habitat		
	Minor	SSSI		N/A Major
		SINC		N/A Major
		AW		No Impact
		Movement corridor		
		Priority habitat		
Invasive non-native species (INNS)	Major	SSSI		Low
		SINC		Low
		AW		No Impact
		Movement corridor		
		Priority habitat		
	Minor	SSSI		High
		SINC		High
		AW		No Impact
		Movement corridor		
		Priority habitat		
Isolation and fragmentation of retained habitat on or off site	Major	SSSI	n	N/A
		SINC	n	N/A
		AW	n	N/A
		Movement corridor		
		Priority habitat		
	Minor	SSSI	y	N/A
		SINC	y	N/A
		AW	n	N/A
		Movement corridor		
		Priority habitat		
Direct loss of habitat	Major	SSSI		
		SINC		
		AW		
		Movement corridor		
		Priority habitat		
	Minor	SSSI		
		SINC		
		AW		
		Movement corridor		
		Priority habitat		

SITE 6

Impact Pathway	Score before Mitigation:	Receptors	Impact y/n	Proportion of site
Water Volume, rates and flow	Major	SSSI		
		SINC		
		AW		
		Movement corridor		
		Priority habitat		
	Minor	SSSI		
		SINC		
		AW		
		Movement corridor		
		Priority habitat		
Water Quality	Major	SSSI		
		SINC		
		AW		
		Movement corridor		
		Priority habitat		
	Minor	SSSI		
		SINC		
		AW		
		Movement corridor		
		Priority habitat		
Disturbance (Recreational and other)	Major	SSSI		High
		SINC		High
		AW		No Impact
		Movement corridor		
		Priority habitat		
	Uncertain	SSSI		
		SINC		
		AW		
		Movement corridor		
		Priority habitat		
Lighting	Major	SSSI		Low
		SINC		Low
		AW		No Impact
		Movement corridor		
		Priority habitat		
Shading	Major	SSSI		Low
		SINC		Low
		AW		No Impact
		Movement corridor		
		Priority habitat		

Unsupervised Pets	Major	SSSI		High
		SINC		High
		AW		No Impact
		Movement corridor		
		Priority habitat		
	Minor	SSSI		N/A Major
		SINC		N/A Major
		AW		No Impact
		Movement corridor		
		Priority habitat		
Invasive non-native species (INNS)	Major	SSSI		Low
		SINC		Low
		AW		No Impact
		Movement corridor		
		Priority habitat		
	Minor	SSSI		Low
		SINC		Low
		AW		No Impact
		Movement corridor		
		Priority habitat		
Isolation and fragmentation of retained habitat on or off site	Major	SSSI	y	N/A
		SINC	y	N/A
		AW	n	N/A
		Movement corridor		
		Priority habitat		
	Minor	SSSI	y	N/A
		SINC	y	N/A
		AW	n	N/A
		Movement corridor		
		Priority habitat		
Direct loss of habitat	Major	SSSI		
		SINC		
		AW		
		Movement corridor		
		Priority habitat		
	Minor	SSSI		
		SINC		
		AW		
		Movement corridor		
		Priority habitat		

SITE 7

Impact Pathway	Score before Mitigation:	Receptors	Impact y/n	Proportion of site
Water Volume, rates and flow	Major	SSSI		
		SINC		
		AW		
		Movement corridor		
		Priority habitat		
	Minor	SSSI		
		SINC		
		AW		
		Movement corridor		
		Priority habitat		
Water Quality	Major	SSSI		
		SINC		
		AW		
		Movement corridor		
		Priority habitat		
	Minor	SSSI		
		SINC		
		AW		
		Movement corridor		
		Priority habitat		
Disturbance (Recreational and other)	Major	SSSI		Half
		SINC		High
		AW		No Impact
		Movement corridor		
		Priority habitat		
	Uncertain	SSI		
		SINC		
		AW		
		Movement corridor		
		Priority habitat		
Lighting	Major	SSSI		Low
		SINC		No Impact
		AW		No Impact
		Movement corridor		
		Priority habitat		
Shading	Major	SSSI		Low
		SINC		No Impact
		AW		No Impact
		Movement corridor		
		Priority habitat		

Unsupervised Pets	Major	SSSI		Half
		SINC		High
		AW		No Impact
		Movement corridor		
		Priority habitat		
	Minor	SSSI		High
		SINC		N/A Major
		AW		Half
		Movement corridor		
		Priority habitat		
Invasive non-native species (INNS)	Major	SSSI		Low
		SINC		No Impact
		AW		No Impact
		Movement corridor		
		Priority habitat		
	Minor	SSSI		Low
		SINC		Low
		AW		No Impact
		Movement corridor		
		Priority habitat		
Isolation and fragmentation of retained habitat on or off site	Major	SSSI	n	N/A
		SINC	n	N/A
		AW	n	N/A
		Movement corridor		
		Priority habitat		
	Minor	SSSI	y	N/A
		SINC	y	N/A
		AW	n	N/A
		Movement corridor		
		Priority habitat		
Direct loss of habitat	Major	SSSI		
		SINC		
		AW		
		Movement corridor		
		Priority habitat		
	Minor	SSSI		
		SINC		
		AW		
		Movement corridor		
		Priority habitat		

SITE 8

Impact Pathway	Score before Mitigation:	Receptors	Impact y/n	Proportion of site
Water Volume, rates and flow	Major	SSSI		
		SINC		
		AW		
		Movement corridor		
		Priority habitat		
	Minor	SSSI		
		SINC		
		AW		
		Movement corridor		
		Priority habitat		
Water Quality	Major	SSSI		
		SINC		
		AW		
		Movement corridor		
		Priority habitat		
	Minor	SSSI		
		SINC		
		AW		
		Movement corridor		
		Priority habitat		
Disturbance (Recreational and other)	Major	SSSI		No Impact
		SINC		No Impact
		AW		No Impact
		Movement corridor		
		Priority habitat		
	Uncertain	SSI		
		SINC		
		AW		
		Movement corridor		
		Priority habitat		
Lighting	Major	SSSI		No Impact
		SINC		No Impact
		AW		No Impact
		Movement corridor		
		Priority habitat		
Shading	Major	SSSI		No Impact
		SINC		No Impact
		AW		No Impact
		Movement corridor		
		Priority habitat		

Unsupervised Pets	Major	SSSI		No Impact
		SINC		No Impact
		AW		No Impact
		Movement corridor		
		Priority habitat		
	Minor	SSSI		No Impact
		SINC		High
		AW		No Impact
		Movement corridor		
		Priority habitat		
Invasive non-native species (INNS)	Major	SSSI		No Impact
		SINC		No Impact
		AW		No Impact
		Movement corridor		
		Priority habitat		
	Minor	SSSI		Low
		SINC		Low
		AW		No Impact
		Movement corridor		
		Priority habitat		
Isolation and fragmentation of retained habitat on or off site	Major	SSSI	n	N/A
		SINC	n	N/A
		AW	n	N/A
		Movement corridor		
		Priority habitat		
	Minor	SSSI	n	N/A
		SINC	n	N/A
		AW	n	N/A
		Movement corridor		
		Priority habitat		
Direct loss of habitat	Major	SSSI		
		SINC		
		AW		
		Movement corridor		
		Priority habitat		
	Minor	SSSI		
		SINC		
		AW		
		Movement corridor		
		Priority habitat		

SITE 9

Impact Pathway	Score before Mitigation:	Receptors	Impact y/n	Proportion of site
Water Volume, rates and flow	Major	SSSI		
		SINC		
		AW		
		Movement corridor		
		Priority habitat		
	Minor	SSSI		
		SINC		
		AW		
		Movement corridor		
		Priority habitat		
Water Quality	Major	SSSI		
		SINC		
		AW		
		Movement corridor		
		Priority habitat		
	Minor	SSSI		
		SINC		
		AW		
		Movement corridor		
		Priority habitat		
Disturbance (Recreational and other)	Major	SSSI		No Impact
		SINC		Low
		AW		Half
		Movement corridor		
		Priority habitat		
	Uncertain	SSI		
		SINC		
		AW		
		Movement corridor		
		Priority habitat		
Lighting	Major	SSSI		No Impact
		SINC		No Impact
		AW		No Impact
		Movement corridor		
		Priority habitat		
Shading	Major	SSSI		No Impact
		SINC		No Impact
		AW		No Impact
		Movement corridor		
		Priority habitat		

Unsupervised Pets	Major	SSSI		No Impact
		SINC		Low
		AW		Half
		Movement corridor		
		Priority habitat		
	Minor	SSSI		No Impact
		SINC		High
		AW		High
		Movement corridor		
		Priority habitat		
Invasive non-native species (INNS)	Major	SSSI		No Impact
		SINC		No Impact
		AW		No Impact
		Movement corridor		
		Priority habitat		
	Minor	SSSI		No Impact
		SINC		No Impact
		AW		No Impact
		Movement corridor		
		Priority habitat		
Isolation and fragmentation of retained habitat on or off site	Major	SSSI	n	N/A
		SINC	n	N/A
		AW	n	N/A
		Movement corridor		
		Priority habitat		
	Minor	SSSI	n	N/A
		SINC	n	N/A
		AW	n	N/A
		Movement corridor		
		Priority habitat		
Direct loss of habitat	Major	SSSI		
		SINC		
		AW		
		Movement corridor		
		Priority habitat		
	Minor	SSSI		
		SINC		
		AW		
		Movement corridor		
		Priority habitat		

SITE 10

Impact Pathway	Score before Mitigation:	Receptors	Impact y/n	Proportion of site
Water Volume, rates and flow	Major	SSSI		
		SINC		
		AW		
		Movement corridor		
		Priority habitat		
	Minor	SSSI		
		SINC		
		AW		
		Movement corridor		
		Priority habitat		
Water Quality	Major	SSSI		
		SINC		
		AW		
		Movement corridor		
		Priority habitat		
	Minor	SSSI		
		SINC		
		AW		
		Movement corridor		
		Priority habitat		
Disturbance (Recreational and other)	Major	SSSI		
		SINC		High
		AW		High
		Movement corridor		
		Priority habitat		
	Uncertain	SSSI		
		SINC		
		AW		
		Movement corridor		
		Priority habitat		
Lighting	Major	SSSI		No Impact
		SINC		High
		AW		Low
		Movement corridor		
		Priority habitat		
Shading	Major	SSSI		No Impact
		SINC		High
		AW		Low
		Movement corridor		
		Priority habitat		

Unsupervised Pets	Major	SSSI		
		SINC		High
		AW		High
		Movement corridor		
		Priority habitat		
	Minor	SSSI		No Impact
		SINC		N/A Major
		AW		N/A Major
		Movement corridor		
		Priority habitat		
Invasive non-native species (INNS)	Major	SSSI		No Impact
		SINC		High
		AW		Low
		Movement corridor		
		Priority habitat		
	Minor	SSSI		No Impact
		SINC		N/A Major
		AW		Low
		Movement corridor		
		Priority habitat		
Isolation and fragmentation of retained habitat on or off site	Major	SSSI	n	N/A
		SINC	y	N/A
		AW	y	N/A
		Movement corridor		
		Priority habitat		
	Minor	SSSI	n	N/A
		SINC	y	N/A
		AW	y	N/A
		Movement corridor		
		Priority habitat		
Direct loss of habitat	Major	SSSI		
		SINC		
		AW		
		Movement corridor		
		Priority habitat		
	Minor	SSSI		
		SINC		
		AW		
		Movement corridor		
		Priority habitat		

SITE 11

Impact Pathway	Score before Mitigation:	Receptors	Impact y/n	Proportion of site	
Water Volume, rates and flow	Major	SSSI			
		SINC			
		AW			
		Movement corridor			
		Priority habitat			
	Minor	SSSI			
		SINC			
		AW			
		Movement corridor			
		Priority habitat			
Water Quality	Major	SSSI			
		SINC			
		AW			
		Movement corridor			
		Priority habitat			
	Minor	SSSI			
		SINC			
		AW			
		Movement corridor			
		Priority habitat			
Disturbance (Recreational and other)	Major	SSSI		No Impact	
		SINC		Low	
		AW		Low	
		Movement corridor			
		Priority habitat			
	Uncertain	SSSI			
		SINC			
		AW			
		Movement corridor			
		Priority habitat			
Lighting	Major	SSSI		No Impact	
		SINC		No Impact	
		AW		No Impact	
		Movement corridor			
		Priority habitat			
Shading	Major	SSSI		No Impact	
		SINC		No Impact	
		AW		No Impact	
		Movement corridor			
		Priority habitat			

Unsupervised Pets	Major	SSSI		No Impact
		SINC		Low
		AW		Low
		Movement corridor		
		Priority habitat		
	Minor	SSSI		No Impact
		SINC		High
		AW		High
		Movement corridor		
		Priority habitat		
Invasive non-native species (INNS)	Major	SSSI		No Impact
		SINC		No Impact
		AW		No Impact
		Movement corridor		
		Priority habitat		
	Minor	SSSI		No Impact
		SINC		No Impact
		AW		No Impact
		Movement corridor		
		Priority habitat		
Isolation and fragmentation of retained habitat on or off site	Major	SSSI	n	N/A
		SINC	n	N/A
		AW	n	N/A
		Movement corridor		
		Priority habitat		
	Minor	SSSI	n	N/A
		SINC	n	N/A
		AW	n	N/A
		Movement corridor		
		Priority habitat		
Direct loss of habitat	Major	SSSI		
		SINC		
		AW		
		Movement corridor		
		Priority habitat		
	Minor	SSSI		
		SINC		
		AW		
		Movement corridor		
		Priority habitat		

SITE 12

Impact Pathway	Score before Mitigation:	Receptors	Impact y/n	Proportion of site
Water Volume, rates and flow	Major	SSSI		
		SINC		
		AW		
		Movement corridor		
		Priority habitat		
	Minor	SSSI		
		SINC		
		AW		
		Movement corridor		
		Priority habitat		
Water Quality	Major	SSSI		
		SINC		
		AW		
		Movement corridor		
		Priority habitat		
	Minor	SSSI		
		SINC		
		AW		
		Movement corridor		
		Priority habitat		
Disturbance (Recreational and other)	Major	SSSI		No Impact
		SINC		High
		AW		High
		Movement corridor		
		Priority habitat		
	Uncertain	SSSI		
		SINC		
		AW		
		Movement corridor		
		Priority habitat		
Lighting	Major	SSSI		No Impact
		SINC		Low
		AW		Low
		Movement corridor		
		Priority habitat		
Shading	Major	SSSI		No Impact
		SINC		Low
		AW		Low
		Movement corridor		
		Priority habitat		

Unsupervised Pets	Major	SSSI		No Impact
		SINC		High
		AW		High
		Movement corridor		
		Priority habitat		
	Minor	SSSI		No Impact
		SINC		N/A Major
		AW		N/A Major
		Movement corridor		
		Priority habitat		
Invasive non-native species (INNS)	Major	SSSI		No Impact
		SINC		Low
		AW		Low
		Movement corridor		
		Priority habitat		
	Minor	SSSI		No Impact
		SINC		High
		AW		High
		Movement corridor		
		Priority habitat		
Isolation and fragmentation of retained habitat on or off site	Major	SSSI	n	N/A
		SINC	y	N/A
		AW	y	N/A
		Movement corridor		
		Priority habitat		
	Minor	SSSI	n	N/A
		SINC	y	N/A
		AW	y	N/A
		Movement corridor		
		Priority habitat		
Direct loss of habitat	Major	SSSI		
		SINC		
		AW		
		Movement corridor		
		Priority habitat		
	Minor	SSSI		
		SINC		
		AW		
		Movement corridor		
		Priority habitat		

SITE 13

Impact Pathway	Score before Mitigation:	Receptors	Impact y/n	Proportion of site
Water Volume, rates and flow	Major	SSSI		
		SINC		
		AW		
		Movement corridor		
		Priority habitat		
	Minor	SSSI		
		SINC		
		AW		
		Movement corridor		
		Priority habitat		
Water Quality	Major	SSSI		
		SINC		
		AW		
		Movement corridor		
		Priority habitat		
	Minor	SSSI		
		SINC		
		AW		
		Movement corridor		
		Priority habitat		
Disturbance (Recreational and other)	Major	SSSI		No Impact
		SINC		High
		AW		High
		Movement corridor		
		Priority habitat		
	Uncertain	SSSI		
		SINC		
		AW		
		Movement corridor		
		Priority habitat		
Lighting	Major	SSSI		No Impact
		SINC		No Impact
		AW		No Impact
		Movement corridor		
		Priority habitat		
Shading	Major	SSSI		No Impact
		SINC		No Impact
		AW		No Impact
		Movement corridor		
		Priority habitat		

Unsupervised Pets	Major	SSSI		No Impact
		SINC		High
		AW		High
		Movement corridor		
		Priority habitat		
	Minor	SSSI		No Impact
		SINC		N/A Major
		AW		N/A Major
		Movement corridor		
		Priority habitat		
Invasive non-native species (INNS)	Major	SSSI		No Impact
		SINC		No Impact
		AW		No Impact
		Movement corridor		
		Priority habitat		
	Minor	SSSI		No Impact
		SINC		No Impact
		AW		No Impact
		Movement corridor		
		Priority habitat		
Isolation and fragmentation of retained habitat on or off site	Major	SSSI	n	N/A
		SINC	n	N/A
		AW	n	N/A
		Movement corridor		
		Priority habitat		
	Minor	SSSI	n	N/A
		SINC	n	N/A
		AW	n	N/A
		Movement corridor		
		Priority habitat		
Direct loss of habitat	Major	SSSI		
		SINC		
		AW		
		Movement corridor		
		Priority habitat		
	Minor	SSSI		
		SINC		
		AW		
		Movement corridor		
		Priority habitat		

SITE 14

Impact Pathway	Score before Mitigation:	Receptors	Impact y/n	Proportion of site	
Water Volume, rates and flow	Major	SSSI			
		SINC			
		AW			
		Movement corridor			
		Priority habitat			
	Minor	SSSI			
		SINC			
		AW			
		Movement corridor			
		Priority habitat			
Water Quality	Major	SSSI			
		SINC			
		AW			
		Movement corridor			
		Priority habitat			
	Minor	SSSI			
		SINC			
		AW			
		Movement corridor			
		Priority habitat			
Disturbance (Recreational and other)	Major	SSSI		No Impact	
		SINC		High	
		AW		No Impact	
		Movement corridor			
		Priority habitat			
	Uncertain	SSSI			
		SINC			
		AW			
		Movement corridor			
		Priority habitat			
Lighting	Major	SSSI		No Impact	
		SINC		Low	
		AW		No Impact	
		Movement corridor			
		Priority habitat			
Shading	Major	SSSI		No Impact	
		SINC		Low	
		AW		No Impact	
		Movement corridor			
		Priority habitat			

Unsupervised Pets	Major	SSSI		No Impact
		SINC		High
		AW		No Impact
		Movement corridor		
		Priority habitat		
	Minor	SSSI		No Impact
		SINC		N/A Major
		AW		High
		Movement corridor		
		Priority habitat		
Invasive non-native species (INNS)	Major	SSSI		No Impact
		SINC		Low
		AW		No Impact
		Movement corridor		
		Priority habitat		
	Minor	SSSI		No Impact
		SINC		Low
		AW		No Impact
		Movement corridor		
		Priority habitat		
Isolation and fragmentation of retained habitat on or off site	Major	SSSI	n	N/A
		SINC	y	N/A
		AW	y	N/A
		Movement corridor		
		Priority habitat		
	Minor	SSSI	n	N/A
		SINC	y	N/A
		AW	y	N/A
		Movement corridor		
		Priority habitat		
Direct loss of habitat	Major	SSSI		
		SINC		
		AW		
		Movement corridor		
		Priority habitat		
	Minor	SSSI		
		SINC		
		AW		
		Movement corridor		
		Priority habitat		

SITE 15

Impact Pathway	Score before Mitigation:	Receptors	Impact y/n	Proportion of site
Water Volume, rates and flow	Major	SSSI		
		SINC		
		AW		
		Movement corridor		
		Priority habitat		
	Minor	SSSI		
		SINC		
		AW		
		Movement corridor		
		Priority habitat		
Water Quality	Major	SSSI		
		SINC		
		AW		
		Movement corridor		
		Priority habitat		
	Minor	SSSI		
		SINC		
		AW		
		Movement corridor		
		Priority habitat		
Disturbance (Recreational and other)	Major	SSSI		No Impact
		SINC		Low
		AW		No Impact
		Movement corridor		
		Priority habitat		
	Uncertain	SSSI		
		SINC		
		AW		
		Movement corridor		
		Priority habitat		
Lighting	Major	SSSI		No Impact
		SINC		No Impact
		AW		No Impact
		Movement corridor		
		Priority habitat		
Shading	Major	SSSI		No Impact
		SINC		No Impact
		AW		No Impact
		Movement corridor		
		Priority habitat		

Unsupervised Pets	Major	SSSI		No Impact
		SINC		Low
		AW		No Impact
		Movement corridor		
		Priority habitat		
	Minor	SSSI		No Impact
		SINC		High
		AW		No Impact
		Movement corridor		
		Priority habitat		
Invasive non-native species (INNS)	Major	SSSI		No Impact
		SINC		No Impact
		AW		No Impact
		Movement corridor		
		Priority habitat		
	Minor	SSSI		No Impact
		SINC		No Impact
		AW		No Impact
		Movement corridor		
		Priority habitat		
Isolation and fragmentation of retained habitat on or off site	Major	SSSI	n	N/A
		SINC	n	N/A
		AW	n	N/A
		Movement corridor		
		Priority habitat		
	Minor	SSSI	n	N/A
		SINC	n	N/A
		AW	n	N/A
		Movement corridor		
		Priority habitat		
Direct loss of habitat	Major	SSSI		
		SINC		
		AW		
		Movement corridor		
		Priority habitat		
	Minor	SSSI		
		SINC		
		AW		
		Movement corridor		
		Priority habitat		

SITE 16

Impact Pathway	Score before Mitigation:	Receptors	Impact y/n	Proportion of site
Water Volume, rates and flow	Major	SSSI		
		SINC		
		AW		
		Movement corridor		
		Priority habitat		
	Minor	SSSI		
		SINC		
		AW		
		Movement corridor		
		Priority habitat		
Water Quality	Major	SSSI		
		SINC		
		AW		
		Movement corridor		
		Priority habitat		
	Minor	SSSI		
		SINC		
		AW		
		Movement corridor		
		Priority habitat		
Disturbance (Recreational and other)	Major	SSSI		Low
		SINC		Low
		AW		No Impact
		Movement corridor		
		Priority habitat		
	Uncertain	SSSI		
		SINC		
		AW		
		Movement corridor		
		Priority habitat		
Lighting	Major	SSSI		Low
		SINC		No Impact
		AW		No Impact
		Movement corridor		
		Priority habitat		
Shading	Major	SSSI		Low
		SINC		No Impact
		AW		No Impact
		Movement corridor		
		Priority habitat		

Unsupervised Pets	Major	SSSI		Low
		SINC		Low
		AW		No Impact
		Movement corridor		
		Priority habitat		
	Minor	SSSI		High
		SINC		Low
		AW		No Impact
		Movement corridor		
		Priority habitat		
Invasive non-native species (INNS)	Major	SSSI		Low
		SINC		No Impact
		AW		No Impact
		Movement corridor		
		Priority habitat		
	Minor	SSSI		Low
		SINC		No Impact
		AW		No Impact
		Movement corridor		
		Priority habitat		
Isolation and fragmentation of retained habitat on or off site	Major	SSSI	y	N/A
		SINC	n	N/A
		AW	n	N/A
		Movement corridor		
		Priority habitat		
	Minor	SSSI	y	N/A
		SINC	n	N/A
		AW	n	N/A
		Movement corridor		
		Priority habitat		
Direct loss of habitat	Major	SSSI		
		SINC		
		AW		
		Movement corridor		
		Priority habitat		
	Minor	SSSI		
		SINC		
		AW		
		Movement corridor		
		Priority habitat		

SITE 17

Impact Pathway	Score before Mitigation:	Receptors	Impact y/n	Proportion of site
Water Volume, rates and flow	Major	SSSI		
		SINC		
		AW		
		Movement corridor		
		Priority habitat		
	Minor	SSSI		
		SINC		
		AW		
		Movement corridor		
		Priority habitat		
Water Quality	Major	SSSI		
		SINC		
		AW		
		Movement corridor		
		Priority habitat		
	Minor	SSSI		
		SINC		
		AW		
		Movement corridor		
		Priority habitat		
Disturbance (Recreational and other)	Major	SSSI		High
		SINC		High
		AW		No Impact
		Movement corridor		
		Priority habitat		
	Uncertain	SSSI		
		SINC		
		AW		
		Movement corridor		
		Priority habitat		
Lighting	Major	SSSI		Half
		SINC		Low
		AW		No Impact
		Movement corridor		
		Priority habitat		
Shading	Major	SSSI		Half
		SINC		Low
		AW		No Impact
		Movement corridor		
		Priority habitat		

Unsupervised Pets	Major	SSSI		High
		SINC		High
		AW		No Impact
		Movement corridor		
		Priority habitat		
	Minor	SSSI		N/A Major
		SINC		N/A Major
		AW		No Impact
		Movement corridor		
		Priority habitat		
Invasive non-native species (INNS)	Major	SSSI		Half
		SINC		Low
		AW		No Impact
		Movement corridor		
		Priority habitat		
	Minor	SSSI		High
		SINC		Low
		AW		No Impact
		Movement corridor		
		Priority habitat		
Isolation and fragmentation of retained habitat on or off site	Major	SSSI	n	N/A
		SINC	n	N/A
		AW	n	N/A
		Movement corridor		
		Priority habitat		
	Minor	SSSI	y	N/A
		SINC	n	N/A
		AW	n	N/A
		Movement corridor		
		Priority habitat		
Direct loss of habitat	Major	SSSI		
		SINC		
		AW		
		Movement corridor		
		Priority habitat		
	Minor	SSSI		
		SINC		
		AW		
		Movement corridor		
		Priority habitat		

SITE 18

Impact Pathway	Score before Mitigation:	Receptors	Impact y/n	Proportion of site
Water Volume, rates and flow	Major	SSSI		
		SINC		
		AW		
		Movement corridor		
		Priority habitat		
	Minor	SSSI		
		SINC		
		AW		
		Movement corridor		
		Priority habitat		
Water Quality	Major	SSSI		
		SINC		
		AW		
		Movement corridor		
		Priority habitat		
	Minor	SSSI		
		SINC		
		AW		
		Movement corridor		
		Priority habitat		
Disturbance (Recreational and other)	Major	SSSI		No Impact
		SINC		High
		AW		No Impact
		Movement corridor		
		Priority habitat		
	Uncertain	SSSI		
		SINC		
		AW		
		Movement corridor		
		Priority habitat		
Lighting	Major	SSSI		No Impact
		SINC		Low
		AW		No Impact
		Movement corridor		
		Priority habitat		
Shading	Major	SSSI		No Impact
		SINC		Low
		AW		No Impact
		Movement corridor		
		Priority habitat		

Unsupervised Pets	Major	SSSI		No Impact
		SINC		High
		AW		No Impact
		Movement corridor		
		Priority habitat		
	Minor	SSSI		No Impact
		SINC		N/A Major
		AW		No Impact
		Movement corridor		
		Priority habitat		
Invasive non-native species (INNS)	Major	SSSI		No Impact
		SINC		Low
		AW		No Impact
		Movement corridor		
		Priority habitat		
	Minor	SSSI		No Impact
		SINC		High
		AW		No Impact
		Movement corridor		
		Priority habitat		
Isolation and fragmentation of retained habitat on or off site	Major	SSSI	n	N/A
		SINC	n	N/A
		AW	n	N/A
		Movement corridor		
		Priority habitat		
	Minor	SSSI	n	N/A
		SINC	y	N/A
		AW	n	N/A
		Movement corridor		
		Priority habitat		
Direct loss of habitat	Major	SSSI		
		SINC		
		AW		
		Movement corridor		
		Priority habitat		
	Minor	SSSI		
		SINC		
		AW		
		Movement corridor		
		Priority habitat		

SITE 19

Impact Pathway	Score before Mitigation:	Receptors	Impact y/n	Proportion of site
Water Volume, rates and flow	Major	SSSI		
		SINC		
		AW		
		Movement corridor		
		Priority habitat		
	Minor	SSSI		
		SINC		
		AW		
		Movement corridor		
		Priority habitat		
Water Quality	Major	SSSI		
		SINC		
		AW		
		Movement corridor		
		Priority habitat		
	Minor	SSSI		
		SINC		
		AW		
		Movement corridor		
		Priority habitat		
Disturbance (Recreational and other)	Major	SSSI		No Impact
		SINC		No Impact
		AW		No Impact
		Movement corridor		
		Priority habitat		
	Uncertain	SSSI		
		SINC		
		AW		
		Movement corridor		
		Priority habitat		
Lighting	Major	SSSI		No Impact
		SINC		No Impact
		AW		No Impact
		Movement corridor		
		Priority habitat		
Shading	Major	SSSI		No Impact
		SINC		No Impact
		AW		No Impact
		Movement corridor		
		Priority habitat		

Unsupervised Pets	Major	SSSI		No Impact
		SINC		No Impact
		AW		No Impact
		Movement corridor		
		Priority habitat		
	Minor	SSSI		No Impact
		SINC		High
		AW		No Impact
		Movement corridor		
		Priority habitat		
Invasive non-native species (INNS)	Major	SSSI		No Impact
		SINC		No Impact
		AW		No Impact
		Movement corridor		
		Priority habitat		
	Minor	SSSI		No Impact
		SINC		No Impact
		AW		No Impact
		Movement corridor		
		Priority habitat		
Isolation and fragmentation of retained habitat on or off site	Major	SSSI	n	N/A
		SINC	n	N/A
		AW	n	N/A
		Movement corridor		
		Priority habitat		
	Minor	SSSI	n	N/A
		SINC	n	N/A
		AW	n	N/A
		Movement corridor		
		Priority habitat		
Direct loss of habitat	Major	SSSI		
		SINC		
		AW		
		Movement corridor		
		Priority habitat		
	Minor	SSSI		
		SINC		
		AW		
		Movement corridor		
		Priority habitat		

SITE 20

Impact Pathway	Score before Mitigation:	Receptors	Impact y/n	Proportion of site
Water Volume, rates and flow	Major	SSSI		
		SINC		
		AW		
		Movement corridor		
		Priority habitat		
	Minor	SSSI		
		SINC		
		AW		
		Movement corridor		
		Priority habitat		
Water Quality	Major	SSSI		
		SINC		
		AW		
		Movement corridor		
		Priority habitat		
	Minor	SSSI		
		SINC		
		AW		
		Movement corridor		
		Priority habitat		
Disturbance (Recreational and other)	Major	SSSI		No Impact
		SINC		No Impact
		AW		No Impact
		Movement corridor		
		Priority habitat		
	Uncertain	SSSI		
		SINC		
		AW		
		Movement corridor		
		Priority habitat		
Lighting	Major	SSSI		No Impact
		SINC		No Impact
		AW		No Impact
		Movement corridor		
		Priority habitat		
Shading	Major	SSSI		No Impact
		SINC		No Impact
		AW		No Impact
		Movement corridor		
		Priority habitat		

Unsupervised Pets	Major	SSSI		No Impact
		SINC		No Impact
		AW		No Impact
		Movement corridor		
		Priority habitat		
	Minor	SSSI		No Impact
		SINC		High
		AW		Low
		Movement corridor		
		Priority habitat		
Invasive non-native species (INNS)	Major	SSSI		No Impact
		SINC		No Impact
		AW		No Impact
		Movement corridor		
		Priority habitat		
	Minor	SSSI		No Impact
		SINC		No Impact
		AW		No Impact
		Movement corridor		
		Priority habitat		
Isolation and fragmentation of retained habitat on or off site	Major	SSSI	n	N/A
		SINC	n	N/A
		AW	n	N/A
		Movement corridor		
		Priority habitat		
	Minor	SSSI	n	N/A
		SINC	n	N/A
		AW	n	N/A
		Movement corridor		
		Priority habitat		
Direct loss of habitat	Major	SSSI		
		SINC		
		AW		
		Movement corridor		
		Priority habitat		
	Minor	SSSI		
		SINC		
		AW		
		Movement corridor		
		Priority habitat		

SITE 21

Impact Pathway	Score before Mitigation:	Receptors	Impact y/n	Proportion of site
Water Volume, rates and flow	Major	SSSI		
		SINC		
		AW		
		Movement corridor		
		Priority habitat		
	Minor	SSSI		
		SINC		
		AW		
		Movement corridor		
		Priority habitat		
Water Quality	Major	SSSI		
		SINC		
		AW		
		Movement corridor		
		Priority habitat		
	Minor	SSSI		
		SINC		
		AW		
		Movement corridor		
		Priority habitat		
Disturbance (Recreational and other)	Major	SSSI		No Impact
		SINC		High
		AW		No Impact
		Movement corridor		
		Priority habitat		
	Uncertain	SSSI		
		SINC		
		AW		
		Movement corridor		
		Priority habitat		
Lighting	Major	SSSI		No Impact
		SINC		Low
		AW		No Impact
		Movement corridor		
		Priority habitat		
Shading	Major	SSSI		No Impact
		SINC		Low
		AW		No Impact
		Movement corridor		
		Priority habitat		

Unsupervised Pets	Major	SSSI		No Impact
		SINC		High
		AW		No Impact
		Movement corridor		
		Priority habitat		
	Minor	SSSI		No Impact
		SINC		N/A Major
		AW		No Impact
		Movement corridor		
		Priority habitat		
Invasive non-native species (INNS)	Major	SSSI		No Impact
		SINC		Low
		AW		No Impact
		Movement corridor		
		Priority habitat		
	Minor	SSSI		No Impact
		SINC		Low
		AW		No Impact
		Movement corridor		
		Priority habitat		
Isolation and fragmentation of retained habitat on or off site	Major	SSSI	n	N/A
		SINC	y	N/A
		AW	y	N/A
		Movement corridor		
		Priority habitat		
	Minor	SSSI	n	N/A
		SINC	y	N/A
		AW	y	N/A
		Movement corridor		
		Priority habitat		
Direct loss of habitat	Major	SSSI		
		SINC		
		AW		
		Movement corridor		
		Priority habitat		
	Minor	SSSI		
		SINC		
		AW		
		Movement corridor		
		Priority habitat		

SITE 22

Impact Pathway	Score before Mitigation:	Receptors	Impact y/n	Proportion of site
Water Volume, rates and flow	Major	SSSI		
		SINC		
		AW		
		Movement corridor		
		Priority habitat		
	Minor	SSSI		
		SINC		
		AW		
		Movement corridor		
		Priority habitat		
Water Quality	Major	SSSI		
		SINC		
		AW		
		Movement corridor		
		Priority habitat		
	Minor	SSSI		
		SINC		
		AW		
		Movement corridor		
		Priority habitat		
Disturbance (Recreational and other)	Major	SSSI		No Impact
		SINC		High
		AW		High
		Movement corridor		
		Priority habitat		
	Uncertain	SSSI		
		SINC		
		AW		
		Movement corridor		
		Priority habitat		
Lighting	Major	SSSI		No Impact
		SINC		Low
		AW		Low
		Movement corridor		
		Priority habitat		
Shading	Major	SSSI		No Impact
		SINC		Low
		AW		Low
		Movement corridor		
		Priority habitat		

Unsupervised Pets	Major	SSSI		No Impact
		SINC		High
		AW		High
		Movement corridor		
		Priority habitat		
	Minor	SSSI		No Impact
		SINC		N/A Major
		AW		N/A Major
		Movement corridor		
		Priority habitat		
Invasive non-native species (INNS)	Major	SSSI		No Impact
		SINC		Low
		AW		Low
		Movement corridor		
		Priority habitat		
	Minor	SSSI		No Impact
		SINC		Low
		AW		Low
		Movement corridor		
		Priority habitat		
Isolation and fragmentation of retained habitat on or off site	Major	SSSI	n	N/A
		SINC	y	N/A
		AW	y	N/A
		Movement corridor		
		Priority habitat		
	Minor	SSSI	n	N/A
		SINC	y	N/A
		AW	y	N/A
		Movement corridor		
		Priority habitat		
Direct loss of habitat	Major	SSSI		
		SINC		
		AW		
		Movement corridor		
		Priority habitat		
	Minor	SSSI		
		SINC		
		AW		
		Movement corridor		
		Priority habitat		

SITE 23

Impact Pathway	Score before Mitigation:	Receptors	Impact y/n	Proportion of site
Water Volume, rates and flow	Major	SSSI		
		SINC		
		AW		
		Movement corridor		
		Priority habitat		
	Minor	SSSI		
		SINC		
		AW		
		Movement corridor		
		Priority habitat		
Water Quality	Major	SSSI		
		SINC		
		AW		
		Movement corridor		
		Priority habitat		
	Minor	SSSI		
		SINC		
		AW		
		Movement corridor		
		Priority habitat		
Disturbance (Recreational and other)	Major	SSSI		No Impact
		SINC		Low
		AW		No Impact
		Movement corridor		
		Priority habitat		
	Uncertain	SSSI		
		SINC		
		AW		
		Movement corridor		
		Priority habitat		
Lighting	Major	SSSI		No Impact
		SINC		No Impact
		AW		No Impact
		Movement corridor		
		Priority habitat		
Shading	Major	SSSI		No Impact
		SINC		No Impact
		AW		No Impact
		Movement corridor		
		Priority habitat		

Unsupervised Pets	Major	SSSI		No Impact
		SINC		Low
		AW		No Impact
		Movement corridor		
		Priority habitat		
	Minor	SSSI		No Impact
		SINC		High
		AW		No Impact
		Movement corridor		
		Priority habitat		
Invasive non-native species (INNS)	Major	SSSI		No Impact
		SINC		No Impact
		AW		No Impact
		Movement corridor		
		Priority habitat		
	Minor	SSSI		No Impact
		SINC		No Impact
		AW		No Impact
		Movement corridor		
		Priority habitat		
Isolation and fragmentation of retained habitat on or off site	Major	SSSI	n	N/A
		SINC	n	N/A
		AW	n	N/A
		Movement corridor		
		Priority habitat		
	Minor	SSSI	n	N/A
		SINC	n	N/A
		AW	n	N/A
		Movement corridor		
		Priority habitat		
Direct loss of habitat	Major	SSSI		
		SINC		
		AW		
		Movement corridor		
		Priority habitat		
	Minor	SSSI		
		SINC		
		AW		
		Movement corridor		
		Priority habitat		

SITE 24

Impact Pathway	Score before Mitigation:	Receptors	Impact y/n	Proportion of site	
Water Volume, rates and flow	Major	SSSI			
		SINC			
		AW			
		Movement corridor			
		Priority habitat			
	Minor	SSSI			
		SINC			
		AW			
		Movement corridor			
		Priority habitat			
Water Quality	Major	SSSI			
		SINC			
		AW			
		Movement corridor			
		Priority habitat			
	Minor	SSSI			
		SINC			
		AW			
		Movement corridor			
		Priority habitat			
Disturbance (Recreational and other)	Major	SSSI		No Impact	
		SINC		High	
		AW		No Impact	
		Movement corridor			
		Priority habitat			
	Uncertain	SSSI			
		SINC			
		AW			
		Movement corridor			
		Priority habitat			
Lighting	Major	SSSI		No Impact	
		SINC		No Impact	
		AW		No Impact	
		Movement corridor			
		Priority habitat			
Shading	Major	SSSI		No Impact	
		SINC		No Impact	
		AW		No Impact	
		Movement corridor			
		Priority habitat			

Unsupervised Pets	Major	SSSI		No Impact
		SINC		High
		AW		No Impact
		Movement corridor		
		Priority habitat		
	Minor	SSSI		No Impact
		SINC		N/A Major
		AW		Low
		Movement corridor		
		Priority habitat		
Invasive non-native species (INNS)	Major	SSSI		No Impact
		SINC		No Impact
		AW		No Impact
		Movement corridor		
		Priority habitat		
	Minor	SSSI		No Impact
		SINC		No Impact
		AW		No Impact
		Movement corridor		
		Priority habitat		
Isolation and fragmentation of retained habitat on or off site	Major	SSSI	n	N/A
		SINC	n	N/A
		AW	n	N/A
		Movement corridor		
		Priority habitat		
	Minor	SSSI	n	N/A
		SINC	n	N/A
		AW	n	N/A
		Movement corridor		
		Priority habitat		
Direct loss of habitat	Major	SSSI		
		SINC		
		AW		
		Movement corridor		
		Priority habitat		
	Minor	SSSI		
		SINC		
		AW		
		Movement corridor		
		Priority habitat		

SITE 25

Impact Pathway	Score before Mitigation:	Receptors	Impact y/n	Proportion of site
Water Volume, rates and flow	Major	SSSI		
		SINC		
		AW		
		Movement corridor		
		Priority habitat		
	Minor	SSSI		
		SINC		
		AW		
		Movement corridor		
		Priority habitat		
Water Quality	Major	SSSI		
		SINC		
		AW		
		Movement corridor		
		Priority habitat		
	Minor	SSSI		
		SINC		
		AW		
		Movement corridor		
		Priority habitat		
Disturbance (Recreational and other)	Major	SSSI		No Impact
		SINC		High
		AW		No Impact
		Movement corridor		
		Priority habitat		
	Uncertain	SSSI		
		SINC		
		AW		
		Movement corridor		
		Priority habitat		
Lighting	Major	SSSI		No Impact
		SINC		No Impact
		AW		No Impact
		Movement corridor		
		Priority habitat		
Shading	Major	SSSI		No Impact
		SINC		No Impact
		AW		No Impact
		Movement corridor		
		Priority habitat		

Unsupervised Pets	Major	SSSI		No Impact
		SINC		High
		AW		No Impact
		Movement corridor		
		Priority habitat		
	Minor	SSSI		No Impact
		SINC		N/A Major
		AW		No Impact
		Movement corridor		
		Priority habitat		
Invasive non-native species (INNS)	Major	SSSI		No Impact
		SINC		No Impact
		AW		No Impact
		Movement corridor		
		Priority habitat		
	Minor	SSSI		No Impact
		SINC		No Impact
		AW		No Impact
		Movement corridor		
		Priority habitat		
Isolation and fragmentation of retained habitat on or off site	Major	SSSI	n	N/A
		SINC	y	N/A
		AW	y	N/A
		Movement corridor		
		Priority habitat		
	Minor	SSSI	n	N/A
		SINC	y	N/A
		AW	y	N/A
		Movement corridor		
		Priority habitat		
Direct loss of habitat	Major	SSSI		
		SINC		
		AW		
		Movement corridor		
		Priority habitat		
	Minor	SSSI		
		SINC		
		AW		
		Movement corridor		
		Priority habitat		

SITE 26

Impact Pathway	Score before Mitigation:	Receptors	Impact y/n	Proportion of site
Water Volume, rates and flow	Major	SSSI		
		SINC		
		AW		
		Movement corridor		
		Priority habitat		
	Minor	SSSI		
		SINC		
		AW		
		Movement corridor		
		Priority habitat		
Water Quality	Major	SSSI		
		SINC		
		AW		
		Movement corridor		
		Priority habitat		
	Minor	SSSI		
		SINC		
		AW		
		Movement corridor		
		Priority habitat		
Disturbance (Recreational and other)	Major	SSSI		No Impact
		SINC		No Impact
		AW		No Impact
		Movement corridor		
		Priority habitat		
	Uncertain	SSSI		
		SINC		
		AW		
		Movement corridor		
		Priority habitat		
Lighting	Major	SSSI		No Impact
		SINC		No Impact
		AW		No Impact
		Movement corridor		
		Priority habitat		
Shading	Major	SSSI		No Impact
		SINC		No Impact
		AW		No Impact
		Movement corridor		
		Priority habitat		

Unsupervised Pets	Major	SSSI		No Impact
		SINC		No Impact
		AW		No Impact
		Movement corridor		
		Priority habitat		
	Minor	SSSI		No Impact
		SINC		Low
		AW		Low
		Movement corridor		
		Priority habitat		
Invasive non-native species (INNS)	Major	SSSI		No Impact
		SINC		No Impact
		AW		No Impact
		Movement corridor		
		Priority habitat		
	Minor	SSSI		No Impact
		SINC		No Impact
		AW		No Impact
		Movement corridor		
		Priority habitat		
Isolation and fragmentation of retained habitat on or off site	Major	SSSI	n	N/A
		SINC	n	N/A
		AW	n	N/A
		Movement corridor		
		Priority habitat		
	Minor	SSSI	n	N/A
		SINC	n	N/A
		AW	n	N/A
		Movement corridor		
		Priority habitat		
Direct loss of habitat	Major	SSSI		
		SINC		
		AW		
		Movement corridor		
		Priority habitat		
	Minor	SSSI		
		SINC		
		AW		
		Movement corridor		
		Priority habitat		

SITE 27

Impact Pathway	Score before Mitigation:	Receptors	Impact y/n	Proportion of site
Water Volume, rates and flow	Major	SSSI		
		SINC		
		AW		
		Movement corridor		
		Priority habitat		
	Minor	SSSI		
		SINC		
		AW		
		Movement corridor		
		Priority habitat		
Water Quality	Major	SSSI		
		SINC		
		AW		
		Movement corridor		
		Priority habitat		
	Minor	SSSI		
		SINC		
		AW		
		Movement corridor		
		Priority habitat		
Disturbance (Recreational and other)	Major	SSSI		No Impact
		SINC		Low
		AW		No Impact
		Movement corridor		
		Priority habitat		
	Uncertain	SSSI		
		SINC		
		AW		
		Movement corridor		
		Priority habitat		
Lighting	Major	SSSI		No Impact
		SINC		No Impact
		AW		No Impact
		Movement corridor		
		Priority habitat		
Shading	Major	SSSI		No Impact
		SINC		No Impact
		AW		No Impact
		Movement corridor		
		Priority habitat		

Unsupervised Pets	Major	SSSI		No Impact
		SINC		Low
		AW		No Impact
		Movement corridor		
		Priority habitat		
	Minor	SSSI		No Impact
		SINC		High
		AW		High
		Movement corridor		
		Priority habitat		
Invasive non-native species (INNS)	Major	SSSI		No Impact
		SINC		No Impact
		AW		No Impact
		Movement corridor		
		Priority habitat		
	Minor	SSSI		No Impact
		SINC		No Impact
		AW		No Impact
		Movement corridor		
		Priority habitat		
Isolation and fragmentation of retained habitat on or off site	Major	SSSI	n	N/A
		SINC	n	N/A
		AW	n	N/A
		Movement corridor		
		Priority habitat		
	Minor	SSSI	n	N/A
		SINC	n	N/A
		AW	n	N/A
		Movement corridor		
		Priority habitat		
Direct loss of habitat	Major	SSSI		
		SINC		
		AW		
		Movement corridor		
		Priority habitat		
	Minor	SSSI		
		SINC		
		AW		
		Movement corridor		
		Priority habitat		

SITE 28

Impact Pathway	Score before Mitigation:	Receptors	Impact y/n	Proportion of site	
Water Volume, rates and flow	Major	SSSI			
		SINC			
		AW			
		Movement corridor			
		Priority habitat			
	Minor	SSSI			
		SINC			
		AW			
		Movement corridor			
		Priority habitat			
Water Quality	Major	SSSI			
		SINC			
		AW			
		Movement corridor			
		Priority habitat			
	Minor	SSSI			
		SINC			
		AW			
		Movement corridor			
		Priority habitat			
Disturbance (Recreational and other)	Major	SSSI		Low	
		SINC		High	
		AW		No Impact	
		Movement corridor			
		Priority habitat			
	Uncertain	SSSI			
		SINC			
		AW			
		Movement corridor			
		Priority habitat			
Lighting	Major	SSSI		No Impact	
		SINC		Low	
		AW		No Impact	
		Movement corridor			
		Priority habitat			
Shading	Major	SSSI		No Impact	
		SINC		Low	
		AW		No Impact	
		Movement corridor			
		Priority habitat			

Unsupervised Pets	Major	SSSI		Low
		SINC		High
		AW		No Impact
		Movement corridor		
		Priority habitat		
	Minor	SSSI		High
		SINC		N/A Major
		AW		Low
		Movement corridor		
		Priority habitat		
Invasive non-native species (INNS)	Major	SSSI		No Impact
		SINC		Low
		AW		No Impact
		Movement corridor		
		Priority habitat		
	Minor	SSSI		No Impact
		SINC		Low
		AW		No Impact
		Movement corridor		
		Priority habitat		
Isolation and fragmentation of retained habitat on or off site	Major	SSSI	n	N/A
		SINC	y	N/A
		AW	n	N/A
		Movement corridor		
		Priority habitat		
	Minor	SSSI	n	N/A
		SINC	y	N/A
		AW	n	N/A
		Movement corridor		
		Priority habitat		
Direct loss of habitat	Major	SSSI		
		SINC		
		AW		
		Movement corridor		
		Priority habitat		
	Minor	SSSI		
		SINC		
		AW		
		Movement corridor		
		Priority habitat		

SITE 29

Impact Pathway	Score before Mitigation:	Receptors	Impact y/n	Proportion of site	
Water Volume, rates and flow	Major	SSSI			
		SINC			
		AW			
		Movement corridor			
		Priority habitat			
	Minor	SSSI			
		SINC			
		AW			
		Movement corridor			
		Priority habitat			
Water Quality	Major	SSSI			
		SINC			
		AW			
		Movement corridor			
		Priority habitat			
	Minor	SSSI			
		SINC			
		AW			
		Movement corridor			
		Priority habitat			
Disturbance (Recreational and other)	Major	SSSI		No Impact	
		SINC		High	
		AW		High	
		Movement corridor			
		Priority habitat			
	Uncertain	SSSI			
		SINC			
		AW			
		Movement corridor			
		Priority habitat			
Lighting	Major	SSSI		No Impact	
		SINC		Low	
		AW		No Impact	
		Movement corridor			
		Priority habitat			
Shading	Major	SSSI		No Impact	
		SINC		Low	
		AW		No Impact	
		Movement corridor			
		Priority habitat			

Unsupervised Pets	Major	SSSI		No Impact
		SINC		High
		AW		High
		Movement corridor		
		Priority habitat		
	Minor	SSSI		No Impact
		SINC		N/A Major
		AW		N/A Major
		Movement corridor		
		Priority habitat		
Invasive non-native species (INNS)	Major	SSSI		No Impact
		SINC		Low
		AW		No Impact
		Movement corridor		
		Priority habitat		
	Minor	SSSI		No Impact
		SINC		Half
		AW		No Impact
		Movement corridor		
		Priority habitat		
Isolation and fragmentation of retained habitat on or off site	Major	SSSI	n	N/A
		SINC	n	N/A
		AW	n	N/A
		Movement corridor		
		Priority habitat		
	Minor	SSSI	n	N/A
		SINC	y	N/A
		AW	n	N/A
		Movement corridor		
		Priority habitat		
Direct loss of habitat	Major	SSSI		
		SINC		
		AW		
		Movement corridor		
		Priority habitat		
	Minor	SSSI		
		SINC		
		AW		
		Movement corridor		
		Priority habitat		

SITE 30

Impact Pathway	Score before Mitigation:	Receptors	Impact y/n	Proportion of site
Water Volume, rates and flow	Major	SSSI		
		SINC		
		AW		
		Movement corridor		
		Priority habitat		
	Minor	SSSI		
		SINC		
		AW		
		Movement corridor		
		Priority habitat		
Water Quality	Major	SSSI		
		SINC		
		AW		
		Movement corridor		
		Priority habitat		
	Minor	SSSI		
		SINC		
		AW		
		Movement corridor		
		Priority habitat		
Disturbance (Recreational and other)	Major	SSSI		High
		SINC		Low
		AW		Low
		Movement corridor		
		Priority habitat		
	Uncertain	SSSI		
		SINC		
		AW		
		Movement corridor		
		Priority habitat		
Lighting	Major	SSSI		Low
		SINC		No Impact
		AW		No Impact
		Movement corridor		
		Priority habitat		
Shading	Major	SSSI		Low
		SINC		No Impact
		AW		No Impact
		Movement corridor		
		Priority habitat		

Unsupervised Pets	Major	SSSI		High
		SINC		Low
		AW		Low
		Movement corridor		
		Priority habitat		
	Minor	SSSI		N/A Major
		SINC		Half
		AW		Half
		Movement corridor		
		Priority habitat		
Invasive non-native species (INNS)	Major	SSSI		Low
		SINC		No Impact
		AW		No Impact
		Movement corridor		
		Priority habitat		
	Minor	SSSI		Low
		SINC		No Impact
		AW		No Impact
		Movement corridor		
		Priority habitat		
Isolation and fragmentation of retained habitat on or off site	Major	SSSI	y	N/A
		SINC	n	N/A
		AW	n	N/A
		Movement corridor		
		Priority habitat		
	Minor	SSSI	y	N/A
		SINC	n	N/A
		AW	n	N/A
		Movement corridor		
		Priority habitat		
Direct loss of habitat	Major	SSSI		
		SINC		
		AW		
		Movement corridor		
		Priority habitat		
	Minor	SSSI		
		SINC		
		AW		
		Movement corridor		
		Priority habitat		

SITE 31

Impact Pathway	Score before Mitigation:	Receptors	Impact y/n	Proportion of site	
Water Volume, rates and flow	Major	SSSI			
		SINC			
		AW			
		Movement corridor			
		Priority habitat			
	Minor	SSSI			
		SINC			
		AW			
		Movement corridor			
		Priority habitat			
Water Quality	Major	SSSI			
		SINC			
		AW			
		Movement corridor			
		Priority habitat			
	Minor	SSSI			
		SINC			
		AW			
		Movement corridor			
		Priority habitat			
Disturbance (Recreational and other)	Major	SSSI		No Impact	
		SINC		High	
		AW		No Impact	
		Movement corridor			
		Priority habitat			
	Uncertain	SSSI			
		SINC			
		AW			
		Movement corridor			
		Priority habitat			
Lighting	Major	SSSI		No Impact	
		SINC		High	
		AW		No Impact	
		Movement corridor			
		Priority habitat			
Shading	Major	SSSI		No Impact	
		SINC		High	
		AW		No Impact	
		Movement corridor			
		Priority habitat			

Unsupervised Pets	Major	SSSI		No Impact
		SINC		High
		AW		No Impact
		Movement corridor		
		Priority habitat		
	Minor	SSSI		No Impact
		SINC		N/A Major
		AW		No Impact
		Movement corridor		
		Priority habitat		
Invasive non-native species (INNS)	Major	SSSI		No Impact
		SINC		High
		AW		No Impact
		Movement corridor		
		Priority habitat		
	Minor	SSSI		No Impact
		SINC		N/A Major
		AW		No Impact
		Movement corridor		
		Priority habitat		
Isolation and fragmentation of retained habitat on or off site	Major	SSSI	n	N/A
		SINC	y	N/A
		AW	n	N/A
		Movement corridor		
		Priority habitat		
	Minor	SSSI	n	N/A
		SINC	y	N/A
		AW	n	N/A
		Movement corridor		
		Priority habitat		
Direct loss of habitat	Major	SSSI		
		SINC		
		AW		
		Movement corridor		
		Priority habitat		
	Minor	SSSI		
		SINC		
		AW		
		Movement corridor		
		Priority habitat		

SITE 32

Impact Pathway	Score before Mitigation:	Receptors	Impact y/n	Proportion of site
Water Volume, rates and flow	Major	SSSI		
		SINC		
		AW		
		Movement corridor		
		Priority habitat		
	Minor	SSSI		
		SINC		
		AW		
		Movement corridor		
		Priority habitat		
Water Quality	Major	SSSI		
		SINC		
		AW		
		Movement corridor		
		Priority habitat		
	Minor	SSSI		
		SINC		
		AW		
		Movement corridor		
		Priority habitat		
Disturbance (Recreational and other)	Major	SSSI		No Impact
		SINC		High
		AW		No Impact
		Movement corridor		
		Priority habitat		
	Uncertain	SSSI		
		SINC		
		AW		
		Movement corridor		
		Priority habitat		
Lighting	Major	SSSI		No Impact
		SINC		Low
		AW		No Impact
		Movement corridor		
		Priority habitat		
Shading	Major	SSSI		No Impact
		SINC		Low
		AW		No Impact
		Movement corridor		
		Priority habitat		

Unsupervised Pets	Major	SSSI		No Impact
		SINC		High
		AW		No Impact
		Movement corridor		
		Priority habitat		
	Minor	SSSI		No Impact
		SINC		N/A Major
		AW		No Impact
		Movement corridor		
		Priority habitat		
Invasive non-native species (INNS)	Major	SSSI		No Impact
		SINC		Low
		AW		No Impact
		Movement corridor		
		Priority habitat		
	Minor	SSSI		No Impact
		SINC		Low
		AW		No Impact
		Movement corridor		
		Priority habitat		
Isolation and fragmentation of retained habitat on or off site	Major	SSSI	n	N/A
		SINC	n	N/A
		AW	n	N/A
		Movement corridor		
		Priority habitat		
	Minor	SSSI	n	N/A
		SINC	y	N/A
		AW	y	N/A
		Movement corridor		
		Priority habitat		
Direct loss of habitat	Major	SSSI		
		SINC		
		AW		
		Movement corridor		
		Priority habitat		
	Minor	SSSI		
		SINC		
		AW		
		Movement corridor		
		Priority habitat		

SITE 33

Impact Pathway	Score before Mitigation:	Receptors	Impact y/n	Proportion of site
Water Volume, rates and flow	Major	SSSI		
		SINC		
		AW		
		Movement corridor		
		Priority habitat		
	Minor	SSSI		
		SINC		
		AW		
		Movement corridor		
		Priority habitat		
Water Quality	Major	SSSI		
		SINC		
		AW		
		Movement corridor		
		Priority habitat		
	Minor	SSSI		
		SINC		
		AW		
		Movement corridor		
		Priority habitat		
Disturbance (Recreational and other)	Major	SSSI		No Impact
		SINC		No Impact
		AW		No Impact
		Movement corridor		
		Priority habitat		
	Uncertain	SSSI		
		SINC		
		AW		
		Movement corridor		
		Priority habitat		
Lighting	Major	SSSI		No Impact
		SINC		No Impact
		AW		No Impact
		Movement corridor		
		Priority habitat		
Shading	Major	SSSI		No Impact
		SINC		No Impact
		AW		No Impact
		Movement corridor		
		Priority habitat		

Unsupervised Pets	Major	SSSI		No Impact
		SINC		No Impact
		AW		No Impact
		Movement corridor		
		Priority habitat		
	Minor	SSSI		No Impact
		SINC		High
		AW		No Impact
		Movement corridor		
		Priority habitat		
Invasive non-native species (INNS)	Major	SSSI		No Impact
		SINC		No Impact
		AW		No Impact
		Movement corridor		
		Priority habitat		
	Minor	SSSI		No Impact
		SINC		No Impact
		AW		No Impact
		Movement corridor		
		Priority habitat		
Isolation and fragmentation of retained habitat on or off site	Major	SSSI	n	N/A
		SINC	n	N/A
		AW	n	N/A
		Movement corridor		
		Priority habitat		
	Minor	SSSI	n	N/A
		SINC	n	N/A
		AW	n	N/A
		Movement corridor		
		Priority habitat		
Direct loss of habitat	Major	SSSI		
		SINC		
		AW		
		Movement corridor		
		Priority habitat		
	Minor	SSSI		
		SINC		
		AW		
		Movement corridor		
		Priority habitat		

SITE 34

Impact Pathway	Score before Mitigation:	Receptors	Impact y/n	Proportion of site
Water Volume, rates and flow	Major	SSSI		
		SINC		
		AW		
		Movement corridor		
		Priority habitat		
	Minor	SSSI		
		SINC		
		AW		
		Movement corridor		
		Priority habitat		
Water Quality	Major	SSSI		
		SINC		
		AW		
		Movement corridor		
		Priority habitat		
	Minor	SSSI		
		SINC		
		AW		
		Movement corridor		
		Priority habitat		
Disturbance (Recreational and other)	Major	SSSI		No Impact
		SINC		High
		AW		No Impact
		Movement corridor		
		Priority habitat		
	Uncertain	SSSI		
		SINC		
		AW		
		Movement corridor		
		Priority habitat		
Lighting	Major	SSSI		No Impact
		SINC		No Impact
		AW		No Impact
		Movement corridor		
		Priority habitat		
Shading	Major	SSSI		No Impact
		SINC		No Impact
		AW		No Impact
		Movement corridor		
		Priority habitat		

Unsupervised Pets	Major	SSSI		No Impact
		SINC		High
		AW		No Impact
		Movement corridor		
		Priority habitat		
	Minor	SSSI		No Impact
		SINC		N/A Major
		AW		Low
		Movement corridor		
		Priority habitat		
Invasive non-native species (INNS)	Major	SSSI		No Impact
		SINC		No Impact
		AW		No Impact
		Movement corridor		
		Priority habitat		
	Minor	SSSI		No Impact
		SINC		No Impact
		AW		No Impact
		Movement corridor		
		Priority habitat		
Isolation and fragmentation of retained habitat on or off site	Major	SSSI	n	N/A
		SINC	y	N/A
		AW	y	N/A
		Movement corridor		
		Priority habitat		
	Minor	SSSI	n	N/A
		SINC	y	N/A
		AW	y	N/A
		Movement corridor		
		Priority habitat		
Direct loss of habitat	Major	SSSI		
		SINC		
		AW		
		Movement corridor		
		Priority habitat		
	Minor	SSSI		
		SINC		
		AW		
		Movement corridor		
		Priority habitat		

SITE 35

Impact Pathway	Score before Mitigation:	Receptors	Impact y/n	Proportion of site
Water Volume, rates and flow	Major	SSSI		
		SINC		
		AW		
		Movement corridor		
		Priority habitat		
	Minor	SSSI		
		SINC		
		AW		
		Movement corridor		
		Priority habitat		
Water Quality	Major	SSSI		
		SINC		
		AW		
		Movement corridor		
		Priority habitat		
	Minor	SSSI		
		SINC		
		AW		
		Movement corridor		
		Priority habitat		
Disturbance (Recreational and other)	Major	SSSI		No Impact
		SINC		High
		AW		Low
		Movement corridor		
		Priority habitat		
	Uncertain	SSSI		
		SINC		
		AW		
		Movement corridor		
		Priority habitat		
Lighting	Major	SSSI		No Impact
		SINC		No Impact
		AW		No Impact
		Movement corridor		
		Priority habitat		
Shading	Major	SSSI		No Impact
		SINC		No Impact
		AW		No Impact
		Movement corridor		
		Priority habitat		

Unsupervised Pets	Major	SSSI		No Impact
		SINC		High
		AW		Low
		Movement corridor		
		Priority habitat		
	Minor	SSSI		No Impact
		SINC		N/A Major
		AW		High
		Movement corridor		
		Priority habitat		
Invasive non-native species (INNS)	Major	SSSI		No Impact
		SINC		No Impact
		AW		No Impact
		Movement corridor		
		Priority habitat		
	Minor	SSSI		No Impact
		SINC		No Impact
		AW		No Impact
		Movement corridor		
		Priority habitat		
Isolation and fragmentation of retained habitat on or off site	Major	SSSI	n	N/A
		SINC	n	N/A
		AW	n	N/A
		Movement corridor		
		Priority habitat		
	Minor	SSSI	n	N/A
		SINC	y	N/A
		AW	n	N/A
		Movement corridor		
		Priority habitat		
Direct loss of habitat	Major	SSSI		
		SINC		
		AW		
		Movement corridor		
		Priority habitat		
	Minor	SSSI		
		SINC		
		AW		
		Movement corridor		
		Priority habitat		

SITE 36

Impact Pathway	Score before Mitigation:	Receptors	Impact y/n	Proportion of site
Water Volume, rates and flow	Major	SSSI		
		SINC		
		AW		
		Movement corridor		
		Priority habitat		
	Minor	SSSI		
		SINC		
		AW		
		Movement corridor		
		Priority habitat		
Water Quality	Major	SSSI		
		SINC		
		AW		
		Movement corridor		
		Priority habitat		
	Minor	SSSI		
		SINC		
		AW		
		Movement corridor		
		Priority habitat		
Disturbance (Recreational and other)	Major	SSSI		No Impact
		SINC		High
		AW		No Impact
		Movement corridor		
		Priority habitat		
	Uncertain	SSSI		
		SINC		
		AW		
		Movement corridor		
		Priority habitat		
Lighting	Major	SSSI		No Impact
		SINC		No Impact
		AW		No Impact
		Movement corridor		
		Priority habitat		
Shading	Major	SSSI		No Impact
		SINC		No Impact
		AW		No Impact
		Movement corridor		
		Priority habitat		

Unsupervised Pets	Major	SSSI		No Impact
		SINC		High
		AW		No Impact
		Movement corridor		
		Priority habitat		
	Minor	SSSI		No Impact
		SINC		N/A Major
		AW		Half
		Movement corridor		
		Priority habitat		
Invasive non-native species (INNS)	Major	SSSI		No Impact
		SINC		No Impact
		AW		No Impact
		Movement corridor		
		Priority habitat		
	Minor	SSSI		No Impact
		SINC		No Impact
		AW		No Impact
		Movement corridor		
		Priority habitat		
Isolation and fragmentation of retained habitat on or off site	Major	SSSI	n	N/A
		SINC	y	N/A
		AW	y	N/A
		Movement corridor		
		Priority habitat		
	Minor	SSSI	n	N/A
		SINC	y	N/A
		AW	y	N/A
		Movement corridor		
		Priority habitat		
Direct loss of habitat	Major	SSSI		
		SINC		
		AW		
		Movement corridor		
		Priority habitat		
	Minor	SSSI		
		SINC		
		AW		
		Movement corridor		
		Priority habitat		

SITE 37

Impact Pathway	Score before Mitigation:	Receptors	Impact y/n	Proportion of site	
Water Volume, rates and flow	Major	SSSI			
		SINC			
		AW			
		Movement corridor			
		Priority habitat			
	Minor	SSSI			
		SINC			
		AW			
		Movement corridor			
		Priority habitat			
Water Quality	Major	SSSI			
		SINC			
		AW			
		Movement corridor			
		Priority habitat			
	Minor	SSSI			
		SINC			
		AW			
		Movement corridor			
		Priority habitat			
Disturbance (Recreational and other)	Major	SSSI		No Impact	
		SINC		No Impact	
		AW		No Impact	
		Movement corridor			
		Priority habitat			
	Uncertain	SSSI			
		SINC			
		AW			
		Movement corridor			
		Priority habitat			
Lighting	Major	SSSI		No Impact	
		SINC		No Impact	
		AW		No Impact	
		Movement corridor			
		Priority habitat			
Shading	Major	SSSI		No Impact	
		SINC		No Impact	
		AW		No Impact	
		Movement corridor			
		Priority habitat			

Unsupervised Pets	Major	SSSI		No Impact
		SINC		No Impact
		AW		No Impact
		Movement corridor		
		Priority habitat		
	Minor	SSSI		No Impact
		SINC		Half
		AW		No Impact
		Movement corridor		
		Priority habitat		
Invasive non-native species (INNS)	Major	SSSI		No Impact
		SINC		No Impact
		AW		No Impact
		Movement corridor		
		Priority habitat		
	Minor	SSSI		No Impact
		SINC		No Impact
		AW		No Impact
		Movement corridor		
		Priority habitat		
Isolation and fragmentation of retained habitat on or off site	Major	SSSI	n	N/A
		SINC	n	N/A
		AW	n	N/A
		Movement corridor		
		Priority habitat		
	Minor	SSSI	n	N/A
		SINC	n	N/A
		AW	n	N/A
		Movement corridor		
		Priority habitat		
Direct loss of habitat	Major	SSSI		
		SINC		
		AW		
		Movement corridor		
		Priority habitat		
	Minor	SSSI		
		SINC		
		AW		
		Movement corridor		
		Priority habitat		

SITE 38

Impact Pathway	Score before Mitigation:	Receptors	Impact y/n	Proportion of site	
Water Volume, rates and flow	Major	SSSI			
		SINC			
		AW			
		Movement corridor			
		Priority habitat			
	Minor	SSSI			
		SINC			
		AW			
		Movement corridor			
		Priority habitat			
Water Quality	Major	SSSI			
		SINC			
		AW			
		Movement corridor			
		Priority habitat			
	Minor	SSSI			
		SINC			
		AW			
		Movement corridor			
		Priority habitat			
Disturbance (Recreational and other)	Major	SSSI		No Impact	
		SINC		High	
		AW		Low	
		Movement corridor			
		Priority habitat			
	Uncertain	SSSI			
		SINC			
		AW			
		Movement corridor			
		Priority habitat			
Lighting	Major	SSSI		No Impact	
		SINC		Low	
		AW		No Impact	
		Movement corridor			
		Priority habitat			
Shading	Major	SSSI		No Impact	
		SINC		Low	
		AW		No Impact	
		Movement corridor			
		Priority habitat			

Unsupervised Pets	Major	SSSI		No Impact
		SINC		High
		AW		Low
		Movement corridor		
		Priority habitat		
	Minor	SSSI		No Impact
		SINC		N/A Major
		AW		Half
		Movement corridor		
		Priority habitat		
Invasive non-native species (INNS)	Major	SSSI		No Impact
		SINC		Low
		AW		No Impact
	Minor	SSSI		No Impact
		SINC		Low
		AW		No Impact
		Movement corridor		
		Priority habitat		
Isolation and fragmentation of retained habitat on or off site	Major	SSSI	n	N/A
		SINC	y	N/A
		AW	y	N/A
		Movement corridor		
		Priority habitat		
	Minor	SSSI	n	N/A
		SINC	y	N/A
		AW	y	N/A
		Movement corridor		
		Priority habitat		
Direct loss of habitat	Major	SSSI		
		SINC		
		AW		
		Movement corridor		
		Priority habitat		
	Minor	SSSI		
		SINC		
		AW		
		Movement corridor		
		Priority habitat		

SITE 39

Impact Pathway	Score before Mitigation:	Receptors	Impact y/n	Proportion of site
Water Volume, rates and flow	Major	SSSI		
		SINC		
		AW		
		Movement corridor		
		Priority habitat		
	Minor	SSSI		
		SINC		
		AW		
		Movement corridor		
		Priority habitat		
Water Quality	Major	SSSI		
		SINC		
		AW		
		Movement corridor		
		Priority habitat		
	Minor	SSSI		
		SINC		
		AW		
		Movement corridor		
		Priority habitat		
Disturbance (Recreational and other)	Major	SSSI		No Impact
		SINC		High
		AW		Low
		Movement corridor		
		Priority habitat		
	Uncertain	SSSI		
		SINC		
		AW		
		Movement corridor		
		Priority habitat		
Lighting	Major	SSSI		No Impact
		SINC		Low
		AW		No Impact
		Movement corridor		
		Priority habitat		
Shading	Major	SSSI		No Impact
		SINC		Low
		AW		No Impact
		Movement corridor		
		Priority habitat		

Unsupervised Pets	Major	SSSI		No Impact
		SINC		High
		AW		Low
		Movement corridor		
		Priority habitat		
	Minor	SSSI		No Impact
		SINC		N/A Major
		AW		High
		Movement corridor		
		Priority habitat		
Invasive non-native species (INNS)	Major	SSSI		No Impact
		SINC		Low
		AW		No Impact
		Movement corridor		
		Priority habitat		
	Minor	SSSI		No Impact
		SINC		Low
		AW		Low
		Movement corridor		
		Priority habitat		
Isolation and fragmentation of retained habitat on or off site	Major	SSSI	n	N/A
		SINC	n	N/A
		AW	n	N/A
		Movement corridor		
		Priority habitat		
	Minor	SSSI	n	N/A
		SINC	y	N/A
		AW	y	N/A
		Movement corridor		
		Priority habitat		
Direct loss of habitat	Major	SSSI		
		SINC		
		AW		
		Movement corridor		
		Priority habitat		
	Minor	SSSI		
		SINC		
		AW		
		Movement corridor		
		Priority habitat		

SITE 40

Impact Pathway	Score before Mitigation:	Receptors	Impact y/n	Proportion of site
Water Volume, rates and flow	Major	SSSI		
		SINC		
		AW		
		Movement corridor		
		Priority habitat		
	Minor	SSSI		
		SINC		
		AW		
		Movement corridor		
		Priority habitat		
Water Quality	Major	SSSI		
		SINC		
		AW		
		Movement corridor		
		Priority habitat		
	Minor	SSSI		
		SINC		
		AW		
		Movement corridor		
		Priority habitat		
Disturbance (Recreational and other)	Major	SSSI		No Impact
		SINC		High
		AW		Low
		Movement corridor		
		Priority habitat		
	Uncertain	SSSI		
		SINC		
		AW		
		Movement corridor		
		Priority habitat		
Lighting	Major	SSSI		No Impact
		SINC		Low
		AW		Low
		Movement corridor		
		Priority habitat		
Shading	Major	SSSI		No Impact
		SINC		Low
		AW		Low
		Movement corridor		
		Priority habitat		

Unsupervised Pets	Major	SSSI		No Impact
		SINC		High
		AW		Low
		Movement corridor		
		Priority habitat		
	Minor	SSSI		No Impact
		SINC		N/A Major
		AW		High
		Movement corridor		
		Priority habitat		
Invasive non-native species (INNS)	Major	SSSI		No Impact
		SINC		Low
		AW		Low
		Movement corridor		
		Priority habitat		
	Minor	SSSI		No Impact
		SINC		Low
		AW		Low
		Movement corridor		
		Priority habitat		
Isolation and fragmentation of retained habitat on or off site	Major	SSSI	n	N/A
		SINC	y	N/A
		AW	y	N/A
		Movement corridor		
		Priority habitat		
	Minor	SSSI	n	N/A
		SINC	y	N/A
		AW	y	N/A
		Movement corridor		
		Priority habitat		
Direct loss of habitat	Major	SSSI		
		SINC		
		AW		
		Movement corridor		
		Priority habitat		
	Minor	SSSI		
		SINC		
		AW		
		Movement corridor		
		Priority habitat		

SITE 41

Impact Pathway	Score before Mitigation:	Receptors	Impact y/n	Proportion of site
Water Volume, rates and flow	Major	SSSI		
		SINC		
		AW		
		Movement corridor		
		Priority habitat		
	Minor	SSSI		
		SINC		
		AW		
		Movement corridor		
		Priority habitat		
Water Quality	Major	SSSI		
		SINC		
		AW		
		Movement corridor		
		Priority habitat		
	Minor	SSSI		
		SINC		
		AW		
		Movement corridor		
		Priority habitat		
Disturbance (Recreational and other)	Major	SSSI		No Impact
		SINC		High
		AW		High
		Movement corridor		
		Priority habitat		
	Uncertain	SSSI		
		SINC		
		AW		
		Movement corridor		
		Priority habitat		
Lighting	Major	SSSI		No Impact
		SINC		Low
		AW		Low
		Movement corridor		
		Priority habitat		
Shading	Major	SSSI		No Impact
		SINC		Low
		AW		Low
		Movement corridor		
		Priority habitat		

Unsupervised Pets	Major	SSSI		No Impact
		SINC		High
		AW		High
		Movement corridor		
		Priority habitat		
	Minor	SSSI		No Impact
		SINC		N/A Major
		AW		N/A Major
		Movement corridor		
		Priority habitat		N/A Major
Invasive non-native species (INNS)	Major	SSSI		No Impact
		SINC		Low
		AW		Low
		Movement corridor		
		Priority habitat		
	Minor	SSSI		No Impact
		SINC		Low
		AW		Low
		Movement corridor		
		Priority habitat		
Isolation and fragmentation of retained habitat on or off site	Major	SSSI	n	N/A
		SINC	n	N/A
		AW	n	N/A
		Movement corridor		
		Priority habitat		
	Minor	SSSI	n	N/A
		SINC	y	N/A
		AW	y	N/A
		Movement corridor		
		Priority habitat		
Direct loss of habitat	Major	SSSI		
		SINC		
		AW		
		Movement corridor		
		Priority habitat		
	Minor	SSSI		
		SINC		
		AW		
		Movement corridor		
		Priority habitat		

SITE 42

Impact Pathway	Score before Mitigation:	Receptors	Impact y/n	Proportion of site
Water Volume, rates and flow	Major	SSSI		
		SINC		
		AW		
		Movement corridor		
		Priority habitat		
	Minor	SSSI		
		SINC		
		AW		
		Movement corridor		
		Priority habitat		
Water Quality	Major	SSSI		
		SINC		
		AW		
		Movement corridor		
		Priority habitat		
	Minor	SSSI		
		SINC		
		AW		
		Movement corridor		
		Priority habitat		
Disturbance (Recreational and other)	Major	SSSI		No Impact
		SINC		High
		AW		High
		Movement corridor		
		Priority habitat		
	Uncertain	SSSI		
		SINC		
		AW		
		Movement corridor		
		Priority habitat		
Lighting	Major	SSSI		No Impact
		SINC		Low
		AW		Low
		Movement corridor		
		Priority habitat		
Shading	Major	SSSI		No Impact
		SINC		Low
		AW		Low
		Movement corridor		
		Priority habitat		

Unsupervised Pets	Major	SSSI		No Impact
		SINC		High
		AW		High
		Movement corridor		
		Priority habitat		
	Minor	SSSI		Low
		SINC		N/A Major
		AW		N/A Major
		Movement corridor		
		Priority habitat		
Invasive non-native species (INNS)	Major	SSSI		No Impact
		SINC		Low
		AW		Low
		Movement corridor		
		Priority habitat		
	Minor	SSSI		No Impact
		SINC		Low
		AW		Low
		Movement corridor		
		Priority habitat		
Isolation and fragmentation of retained habitat on or off site	Major	SSSI	n	N/A
		SINC	y	N/A
		AW	y	N/A
		Movement corridor		
		Priority habitat		
	Minor	SSSI	n	N/A
		SINC	y	N/A
		AW	y	N/A
		Movement corridor		
		Priority habitat		
Direct loss of habitat	Major	SSSI		
		SINC		
		AW		
		Movement corridor		
		Priority habitat		
	Minor	SSSI		
		SINC		
		AW		
		Movement corridor		
		Priority habitat		

SITE 43

Impact Pathway	Score before Mitigation:	Receptors	Impact y/n	Proportion of site
Water Volume, rates and flow	Major	SSSI		
		SINC		
		AW		
		Movement corridor		
		Priority habitat		
	Minor	SSSI		
		SINC		
		AW		
		Movement corridor		
		Priority habitat		
Water Quality	Major	SSSI		
		SINC		
		AW		
		Movement corridor		
		Priority habitat		
	Minor	SSSI		
		SINC		
		AW		
		Movement corridor		
		Priority habitat		
Disturbance (Recreational and other)	Major	SSSI		No Impact
		SINC		Low
		AW		Low
		Movement corridor		
		Priority habitat		
	Uncertain	SSSI		
		SINC		
		AW		
		Movement corridor		
		Priority habitat		
Lighting	Major	SSSI		No Impact
		SINC		No Impact
		AW		No Impact
		Movement corridor		
		Priority habitat		
Shading	Major	SSSI		No Impact
		SINC		No Impact
		AW		No Impact
		Movement corridor		
		Priority habitat		

Unsupervised Pets	Major	SSSI		No Impact
		SINC		Low
		AW		Low
		Movement corridor		
		Priority habitat		
	Minor	SSSI		No Impact
		SINC		High
		AW		High
		Movement corridor		
		Priority habitat		
Invasive non-native species (INNS)	Major	SSSI		No Impact
		SINC		No Impact
		AW		No Impact
		Movement corridor		
		Priority habitat		
	Minor	SSSI		No Impact
		SINC		No Impact
		AW		No Impact
		Movement corridor		
		Priority habitat		
Isolation and fragmentation of retained habitat on or off site	Major	SSSI	n	N/A
		SINC	n	N/A
		AW	n	N/A
		Movement corridor		
		Priority habitat		
	Minor	SSSI	n	N/A
		SINC	n	N/A
		AW	n	N/A
		Movement corridor		
		Priority habitat		
Direct loss of habitat	Major	SSSI		
		SINC		
		AW		
		Movement corridor		
		Priority habitat		
	Minor	SSSI		
		SINC		
		AW		
		Movement corridor		
		Priority habitat		

SITE 44

Impact Pathway	Score before Mitigation:	Receptors	Impact y/n	Proportion of site
Water Volume, rates and flow	Major	SSSI		
		SINC		
		AW		
		Movement corridor		
		Priority habitat		
	Minor	SSSI		
		SINC		
		AW		
		Movement corridor		
		Priority habitat		
Water Quality	Major	SSSI		
		SINC		
		AW		
		Movement corridor		
		Priority habitat		
	Minor	SSSI		
		SINC		
		AW		
		Movement corridor		
		Priority habitat		
Disturbance (Recreational and other)	Major	SSSI		High
		SINC		High
		AW		High
		Movement corridor		
		Priority habitat		
	Uncertain	SSSI		
		SINC		
		AW		
		Movement corridor		
		Priority habitat		
Lighting	Major	SSSI		No Impact
		SINC		Low
		AW		Low
		Movement corridor		
		Priority habitat		
Shading	Major	SSSI		No Impact
		SINC		Low
		AW		Low
		Movement corridor		
		Priority habitat		

Unsupervised Pets	Major	SSSI		High
		SINC		High
		AW		High
		Movement corridor		
		Priority habitat		
	Minor	SSSI		N/A Major
		SINC		N/A Major
		AW		N/A Major
		Movement corridor		
		Priority habitat		N/A Major
Invasive non-native species (INNS)	Major	SSSI		No Impact
		SINC		Low
		AW		Low
		Movement corridor		
		Priority habitat		
	Minor	SSSI		No Impact
		SINC		Low
		AW		Low
		Movement corridor		
		Priority habitat		
Isolation and fragmentation of retained habitat on or off site	Major	SSSI	n	N/A
		SINC	n	N/A
		AW	n	N/A
		Movement corridor		
		Priority habitat		
	Minor	SSSI	n	N/A
		SINC	y	N/A
		AW	y	N/A
		Movement corridor		
		Priority habitat		
Direct loss of habitat	Major	SSSI		
		SINC		
		AW		
		Movement corridor		
		Priority habitat		
	Minor	SSSI		
		SINC		
		AW		
		Movement corridor		
		Priority habitat		

SITE 45

Impact Pathway	Score before Mitigation:	Receptors	Impact y/n	Proportion of site
Water Volume, rates and flow	Major	SSSI		
		SINC		
		AW		
		Movement corridor		
		Priority habitat		
	Minor	SSSI		
		SINC		
		AW		
		Movement corridor		
		Priority habitat		
Water Quality	Major	SSSI		
		SINC		
		AW		
		Movement corridor		
		Priority habitat		
	Minor	SSSI		
		SINC		
		AW		
		Movement corridor		
		Priority habitat		
Disturbance (Recreational and other)	Major	SSSI		High
		SINC		High
		AW		Low
		Movement corridor		
		Priority habitat		
	Uncertain	SSSI		
		SINC		
		AW		
		Movement corridor		
		Priority habitat		
Lighting	Major	SSSI		Low
		SINC		Low
		AW		No Impact
		Movement corridor		
		Priority habitat		
Shading	Major	SSSI		Low
		SINC		Low
		AW		No Impact
		Movement corridor		
		Priority habitat		

Unsupervised Pets	Major	SSSI		High
		SINC		High
		AW		Low
		Movement corridor		
		Priority habitat		
	Minor	SSSI		N/A Major
		SINC		N/A Major
		AW		High
		Movement corridor		
		Priority habitat		
Invasive non-native species (INNS)	Major	SSSI		Low
		SINC		Low
		AW		No Impact
		Movement corridor		
		Priority habitat		
	Minor	SSSI		Low
		SINC		Half
		AW		No Impact
		Movement corridor		
		Priority habitat		
Isolation and fragmentation of retained habitat on or off site	Major	SSSI	y	N/A
		SINC	y	N/A
		AW	y	N/A
		Movement corridor		
		Priority habitat		
	Minor	SSSI	y	N/A
		SINC	y	N/A
		AW	y	N/A
		Movement corridor		
		Priority habitat		
Direct loss of habitat	Major	SSSI		
		SINC		
		AW		
		Movement corridor		
		Priority habitat		
	Minor	SSSI		
		SINC		
		AW		
		Movement corridor		
		Priority habitat		

SITE 46

Impact Pathway	Score before Mitigation:	Receptors	Impact y/n	Proportion of site
Water Volume, rates and flow	Major	SSSI		
		SINC		
		AW		
		Movement corridor		
		Priority habitat		
	Minor	SSSI		
		SINC		
		AW		
		Movement corridor		
		Priority habitat		
Water Quality	Major	SSSI		
		SINC		
		AW		
		Movement corridor		
		Priority habitat		
	Minor	SSSI		
		SINC		
		AW		
		Movement corridor		
		Priority habitat		
Disturbance (Recreational and other)	Major	SSSI		No Impact
		SINC		No Impact
		AW		No Impact
		Movement corridor		
		Priority habitat		
	Uncertain	SSSI		
		SINC		
		AW		
		Movement corridor		
		Priority habitat		
Lighting	Major	SSSI		No Impact
		SINC		No Impact
		AW		No Impact
		Movement corridor		
		Priority habitat		
Shading	Major	SSSI		No Impact
		SINC		No Impact
		AW		No Impact
		Movement corridor		
		Priority habitat		

Unsupervised Pets	Major	SSSI		No Impact
		SINC		No Impact
		AW		No Impact
		Movement corridor		
		Priority habitat		
	Minor	SSSI		No Impact
		SINC		High
		AW		High
		Movement corridor		
		Priority habitat		
Invasive non-native species (INNS)	Major	SSSI		No Impact
		SINC		No Impact
		AW		No Impact
		Movement corridor		
		Priority habitat		
	Minor	SSSI		No Impact
		SINC		No Impact
		AW		No Impact
		Movement corridor		
		Priority habitat		
Isolation and fragmentation of retained habitat on or off site	Major	SSSI	n	N/A
		SINC	n	N/A
		AW	n	N/A
		Movement corridor		
		Priority habitat		
	Minor	SSSI	n	N/A
		SINC	n	N/A
		AW	n	N/A
		Movement corridor		
		Priority habitat		
Direct loss of habitat	Major	SSSI		
		SINC		
		AW		
		Movement corridor		
		Priority habitat		
	Minor	SSSI		
		SINC		
		AW		
		Movement corridor		
		Priority habitat		

SITE 47

Impact Pathway	Score before Mitigation:	Receptors	Impact y/n	Proportion of site
Water Volume, rates and flow	Major	SSSI		
		SINC		
		AW		
		Movement corridor		
		Priority habitat		
	Minor	SSSI		
		SINC		
		AW		
		Movement corridor		
		Priority habitat		
Water Quality	Major	SSSI		
		SINC		
		AW		
		Movement corridor		
		Priority habitat		
	Minor	SSSI		
		SINC		
		AW		
		Movement corridor		
		Priority habitat		
Disturbance (Recreational and other)	Major	SSSI		No Impact
		SINC		High
		AW		No Impact
		Movement corridor		
		Priority habitat		
	Uncertain	SSSI		
		SINC		
		AW		
		Movement corridor		
		Priority habitat		
Lighting	Major	SSSI		No Impact
		SINC		No Impact
		AW		No Impact
		Movement corridor		
		Priority habitat		
Shading	Major	SSSI		No Impact
		SINC		No Impact
		AW		No Impact
		Movement corridor		
		Priority habitat		

Unsupervised Pets	Major	SSSI		No Impact
		SINC		High
		AW		No Impact
		Movement corridor		
		Priority habitat		
	Minor	SSSI		No Impact
		SINC		N/A Major
		AW		No Impact
		Movement corridor		
		Priority habitat		
Invasive non-native species (INNS)	Major	SSSI		No Impact
		SINC		No Impact
		AW		No Impact
		Movement corridor		
		Priority habitat		
	Minor	SSSI		No Impact
		SINC		No Impact
		AW		No Impact
		Movement corridor		
		Priority habitat		
Isolation and fragmentation of retained habitat on or off site	Major	SSSI	n	N/A
		SINC	n	N/A
		AW	n	N/A
		Movement corridor		
		Priority habitat		
	Minor	SSSI	n	N/A
		SINC	n	N/A
		AW	n	N/A
		Movement corridor		
		Priority habitat		
Direct loss of habitat	Major	SSSI		
		SINC		
		AW		
		Movement corridor		
		Priority habitat		
	Minor	SSSI		
		SINC		
		AW		
		Movement corridor		
		Priority habitat		

SITE 48

Impact Pathway	Score before Mitigation:	Receptors	Impact y/n	Proportion of site
Water Volume, rates and flow	Major	SSSI		
		SINC		
		AW		
		Movement corridor		
		Priority habitat		
	Minor	SSSI		
		SINC		
		AW		
		Movement corridor		
		Priority habitat		
Water Quality	Major	SSSI		
		SINC		
		AW		
		Movement corridor		
		Priority habitat		
	Minor	SSSI		
		SINC		
		AW		
		Movement corridor		
		Priority habitat		
Disturbance (Recreational and other)	Major	SSSI	n	
		SINC	y	High
		AW	y	High
		Movement corridor		
		Priority habitat	y	
	Uncertain	SSSI	n	
		SINC	y	
		AW	y	
		Movement corridor		
		Priority habitat		
Lighting	Major	SSSI	n	
		SINC	n	
		AW	n	
		Movement corridor		
		Priority habitat		
Shading	Major	SSSI	n	
		SINC	n	
		AW	n	
		Movement corridor		
		Priority habitat		

Unsupervised Pets	Major	SSSI	n	
		SINC	y	High
		AW	y	High
		Movement corridor		
		Priority habitat		
	Minor	SSSI	n	
		SINC	y	High
		AW	y	High
		Movement corridor		
		Priority habitat		
Invasive non-native species (INNS)	Major	SSSI	n	
		SINC	n	
		AW	n	
		Movement corridor		
		Priority habitat		
	Minor	SSSI	n	
		SINC	n	
		AW	n	
		Movement corridor		
		Priority habitat		
Isolation and fragmentation of retained habitat on or off site	Major	SSSI	n	N/A
		SINC	n	N/A
		AW	n	N/A
		Movement corridor		
		Priority habitat		
	Minor	SSSI	n	N/A
		SINC	n	N/A
		AW	n	N/A
		Movement corridor		
		Priority habitat		
Direct loss of habitat	Major	SSSI	n	
		SINC	n	
		AW	n	
		Movement corridor		
		Priority habitat		
	Minor	SSSI	n	
		SINC	n	
		AW	n	
		Movement corridor		
		Priority habitat		

SITE 49

Impact Pathway	Score before Mitigation:	Receptors	Impact y/n	Proportion of site
Water Volume, rates and flow	Major	SSSI		
		SINC		
		AW		
		Movement corridor		
		Priority habitat		
	Minor	SSSI		
		SINC		
		AW		
		Movement corridor		
		Priority habitat		
Water Quality	Major	SSSI		
		SINC		
		AW		
		Movement corridor		
		Priority habitat		
	Minor	SSSI		
		SINC		
		AW		
		Movement corridor		
		Priority habitat		
Disturbance (Recreational and other)	Major	SSSI		No Impact
		SINC		High
		AW		Low
		Movement corridor		
		Priority habitat		
	Uncertain	SSI		
		SINC		
		AW		
		Movement corridor		
		Priority habitat		
Lighting	Major	SSSI		No Impact
		SINC		Low
		AW		No Impact
		Movement corridor		
		Priority habitat		
Shading	Major	SSSI		No Impact
		SINC		Low
		AW		No Impact
		Movement corridor		
		Priority habitat		

Unsupervised Pets	Major	SSSI		No Impact
		SINC		High
		AW		Low
		Movement corridor		
		Priority habitat		
	Minor	SSSI		No Impact
		SINC		N/A Major
		AW		High
		Movement corridor		
		Priority habitat		
Invasive non-native species (INNS)	Major	SSSI		No Impact
		SINC		Low
		AW		No Impact
		Movement corridor		
		Priority habitat		
	Minor	SSSI		No Impact
		SINC		Low
		AW		No Impact
		Movement corridor		
		Priority habitat		
Isolation and fragmentation of retained habitat on or off site	Major	SSSI	n	N/A
		SINC	n	N/A
		AW	n	N/A
		Movement corridor		
		Priority habitat		
	Minor	SSSI	n	N/A
		SINC	y	N/A
		AW	n	N/A
		Movement corridor		
		Priority habitat		
Direct loss of habitat	Major	SSSI		
		SINC		
		AW		
		Movement corridor		
		Priority habitat		
	Minor	SSSI		
		SINC		
		AW		
		Movement corridor		
		Priority habitat		

SITE 50

Impact Pathway	Score before Mitigation:	Receptors	Impact y/n	Proportion of site
Water Volume, rates and flow	Major	SSSI		
		SINC		
		AW		
		Movement corridor		
		Priority habitat		
	Minor	SSSI		
		SINC		
		AW		
		Movement corridor		
		Priority habitat		
Water Quality	Major	SSSI		
		SINC		
		AW		
		Movement corridor		
		Priority habitat		
	Minor	SSSI		
		SINC		
		AW		
		Movement corridor		
		Priority habitat		
Disturbance (Recreational and other)	Major	SSSI		Low
		SINC		High
		AW		High
		Movement corridor		
		Priority habitat		
	Uncertain	SSSI		
		SINC		
		AW		
		Movement corridor		
		Priority habitat		
Lighting	Major	SSSI		No Impact
		SINC		Low
		AW		Low
		Movement corridor		
		Priority habitat		
Shading	Major	SSSI		No Impact
		SINC		Low
		AW		Low
		Movement corridor		
		Priority habitat		

Unsupervised Pets	Major	SSSI		Low
		SINC		High
		AW		High
		Movement corridor		
		Priority habitat		
	Minor	SSSI		High
		SINC		N/A Major
		AW		N/A Major
		Movement corridor		
		Priority habitat		
Invasive non-native species (INNS)	Major	SSSI		No Impact
		SINC		Low
		AW		Low
		Movement corridor		
		Priority habitat		
	Minor	SSSI		No Impact
		SINC		Low
		AW		Low
		Movement corridor		
		Priority habitat		
Isolation and fragmentation of retained habitat on or off site	Major	SSSI	n	N/A
		SINC	y	N/A
		AW	y	N/A
		Movement corridor		
		Priority habitat		
	Minor	SSSI	n	N/A
		SINC	y	N/A
		AW	y	N/A
		Movement corridor		
		Priority habitat		
Direct loss of habitat	Major	SSSI		
		SINC		
		AW		
		Movement corridor		
		Priority habitat		
	Minor	SSSI		
		SINC		
		AW		
		Movement corridor		
		Priority habitat		

SITE 51

Impact Pathway	Score before Mitigation:	Receptors	Impact y/n	Proportion of site
Water Volume, rates and flow	Major	SSSI		
		SINC		
		AW		
		Movement corridor		
		Priority habitat		
	Minor	SSSI		
		SINC		
		AW		
		Movement corridor		
		Priority habitat		
Water Quality	Major	SSSI		
		SINC		
		AW		
		Movement corridor		
		Priority habitat		
	Minor	SSSI		
		SINC		
		AW		
		Movement corridor		
		Priority habitat		
Disturbance (Recreational and other)	Major	SSSI		No Impact
		SINC		High
		AW		No Impact
		Movement corridor		
		Priority habitat		
	Uncertain	SSSI		
		SINC		
		AW		
		Movement corridor		
		Priority habitat		
Lighting	Major	SSSI		No Impact
		SINC		Low
		AW		No Impact
		Movement corridor		
		Priority habitat		
Shading	Major	SSSI		No Impact
		SINC		Low
		AW		No Impact
		Movement corridor		
		Priority habitat		

Unsupervised Pets	Major	SSSI		No Impact
		SINC		High
		AW		No Impact
		Movement corridor		
		Priority habitat		
	Minor	SSSI		Low
		SINC		N/A Major
		AW		Low
		Movement corridor		
		Priority habitat		
Invasive non-native species (INNS)	Major	SSSI		No Impact
		SINC		Low
		AW		No Impact
		Movement corridor		
		Priority habitat		
	Minor	SSSI		No Impact
		SINC		Low
		AW		No Impact
		Movement corridor		
		Priority habitat		
Isolation and fragmentation of retained habitat on or off site	Major	SSSI	n	N/A
		SINC	y	N/A
		AW	n	N/A
		Movement corridor		
		Priority habitat		
	Minor	SSSI	n	N/A
		SINC	y	N/A
		AW	y	N/A
		Movement corridor		
		Priority habitat		
Direct loss of habitat	Major	SSSI		
		SINC		
		AW		
		Movement corridor		
		Priority habitat		
	Minor	SSSI		
		SINC		
		AW		
		Movement corridor		
		Priority habitat		

SITE 52

Impact Pathway	Score before Mitigation:	Receptors	Impact y/n	Proportion of site
Water Volume, rates and flow	Major	SSSI		
		SINC		
		AW		
		Movement corridor		
		Priority habitat		
	Minor	SSSI		
		SINC		
		AW		
		Movement corridor		
		Priority habitat		
Water Quality	Major	SSSI		
		SINC		
		AW		
		Movement corridor		
		Priority habitat		
	Minor	SSSI		
		SINC		
		AW		
		Movement corridor		
		Priority habitat		
Disturbance (Recreational and other)	Major	SSSI		Low
		SINC		Low
		AW		Low
		Movement corridor		
		Priority habitat		
	Uncertain	SSSI		
		SINC		
		AW		
		Movement corridor		
		Priority habitat		
Lighting	Major	SSSI		No Impact
		SINC		No Impact
		AW		No Impact
		Movement corridor		
		Priority habitat		
Shading	Major	SSSI		No Impact
		SINC		No Impact
		AW		No Impact
		Movement corridor		
		Priority habitat		

Unsupervised Pets	Major	SSSI		Low
		SINC		Low
		AW		Low
		Movement corridor		
		Priority habitat		
	Minor	SSSI		Low
		SINC		High
		AW		Half
		Movement corridor		
		Priority habitat		
Invasive non-native species (INNS)	Major	SSSI		No Impact
		SINC		No Impact
		AW		No Impact
		Movement corridor		
		Priority habitat		
	Minor	SSSI		No Impact
		SINC		No Impact
		AW		No Impact
		Movement corridor		
		Priority habitat		
Isolation and fragmentation of retained habitat on or off site	Major	SSSI	n	N/A
		SINC	y	N/A
		AW	y	N/A
		Movement corridor		
		Priority habitat		
	Minor	SSSI	n	N/A
		SINC	y	N/A
		AW	y	N/A
		Movement corridor		
		Priority habitat		
Direct loss of habitat	Major	SSSI		
		SINC		
		AW		
		Movement corridor		
		Priority habitat		
	Minor	SSSI		
		SINC		
		AW		
		Movement corridor		
		Priority habitat		



Scan the QR code to find out more or visit
eastleigh.gov.uk/localplanreview

