

The National Coastal Erosion Risk shows the coastal baseline. This baseline is split to 'frontages'. These are defined as lengths of coast with consistent characteristics based on the cliff behaviour characteristics and the defence characteristics. It is intended as an up-to-date and reliable benchmark dataset showing erosion extents and rates for three periods: • Short Term (0 – 20yr); • Medium Term (20 – 50yr); and • Long Term (50 – 100yr). For the 5th, 50th and 95th percentile confidence levels for (All distances are cumulative over time and given in metres): • No Active Intervention Policy Scenario; and • With the implementation of Shoreline Management Plan 2 Policies.

On this figure the frontages are mapped by defence type, and labelled with the erosion extents for the Medium and Long term in line with the SMP policies for those locations.



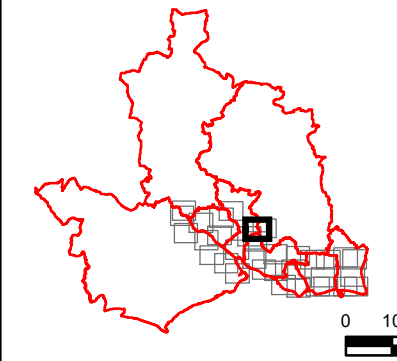
PROJECT
Partnership for South Hampshire
Strategic Flood Risk Assessment

CLIENT
Portsmouth City Council on behalf of
Eastleigh Borough Council

CONSULTANT
AECOM Limited
Sunley House
4 Bedford Park
Croydon, CR0 2AP
www.aecom.com

- LEGEND**
- Local Authority Boundary
 - National Coastal Erosion Risk Mapping (NCERM)**
 - Defence Type**
 - Embankment
 - Gabions
 - Natural
 - Revetment
 - Seawall
 - Timber Structure
 - Other

OVERVIEW



NOTES

© Environment Agency copyright and/or database right 2022.
Reproduced from Ordnance Survey digital map data © Crown copyright 2022. All rights reserved. Licence number 0100031673.

This map is intended to provide a strategic overview and should not be used to assess individual properties. Refer to the accompanying SFRA Report for details of the datasets and purpose of their use.

ISSUE PURPOSE

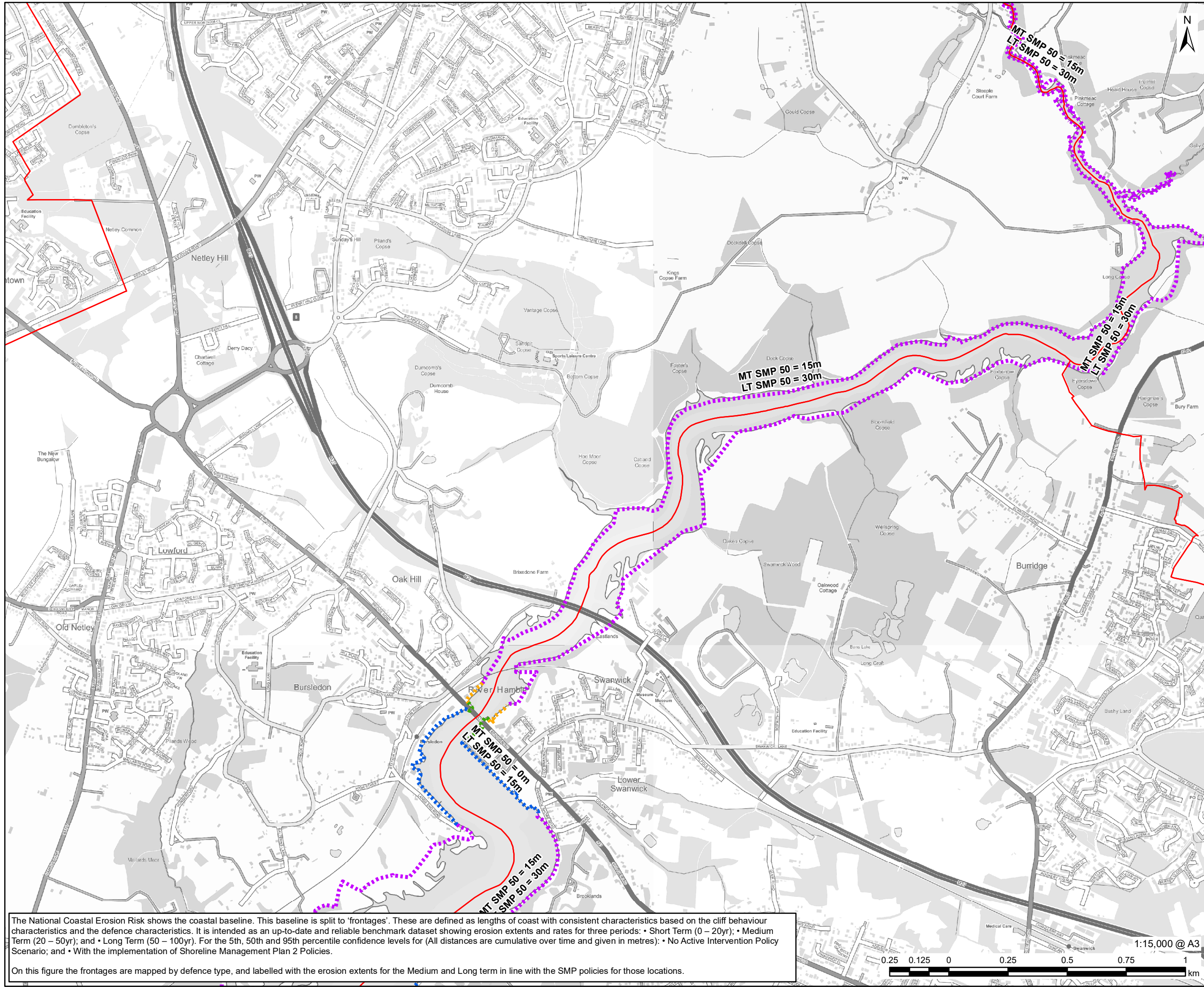
For Information

PROJECT NUMBER
60653132

FIGURE TITLE
Coastal Erosion Risk
Sheet 1 of 4

FIGURE NUMBER
Figure 1

This drawing has been prepared for the use of AECOM's client. It may not be used, modified, reproduced or relied upon by third parties, except as agreed by AECOM or as required by law. AECOM accepts no responsibility, and denies any liability whatsoever, to any party that uses or relies on this drawing without AECOM's express written consent. Do not scale this document. All measurements must be obtained from the stated dimensions.

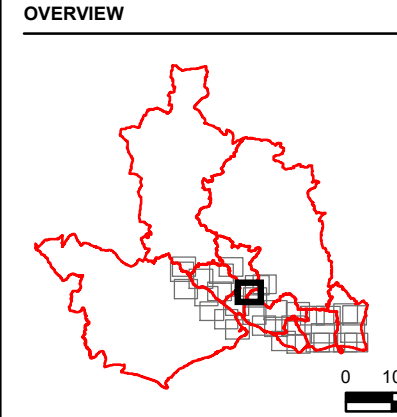


PROJECT
Partnership for South Hampshire Strategic Flood Risk Assessment

CLIENT
Portsmouth City Council on behalf of Eastleigh Borough Council

CONSULTANT
AECOM Limited
Sunley House
4 Bedford Park
Croydon, CR0 2AP
www.aecom.com

- LEGEND**
- Local Authority Boundary
 - National Coastal Erosion Risk Mapping (NCERM)**
 - Defence Type**
 - Embankment
 - Gabions
 - Natural
 - Revetment
 - Seawall
 - Timber Structure
 - Other



NOTES

© Environment Agency copyright and/or database right 2022.
Reproduced from Ordnance Survey digital map data © Crown copyright 2022. All rights reserved. Licence number 0100031673.

This map is intended to provide a strategic overview and should not be used to assess individual properties. Refer to the accompanying SFRA Report for details of the datasets and purpose of their use.

ISSUE PURPOSE
For Information

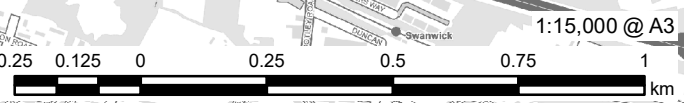
PROJECT NUMBER
60653132

FIGURE TITLE
Coastal Erosion Risk
Sheet 2 of 4

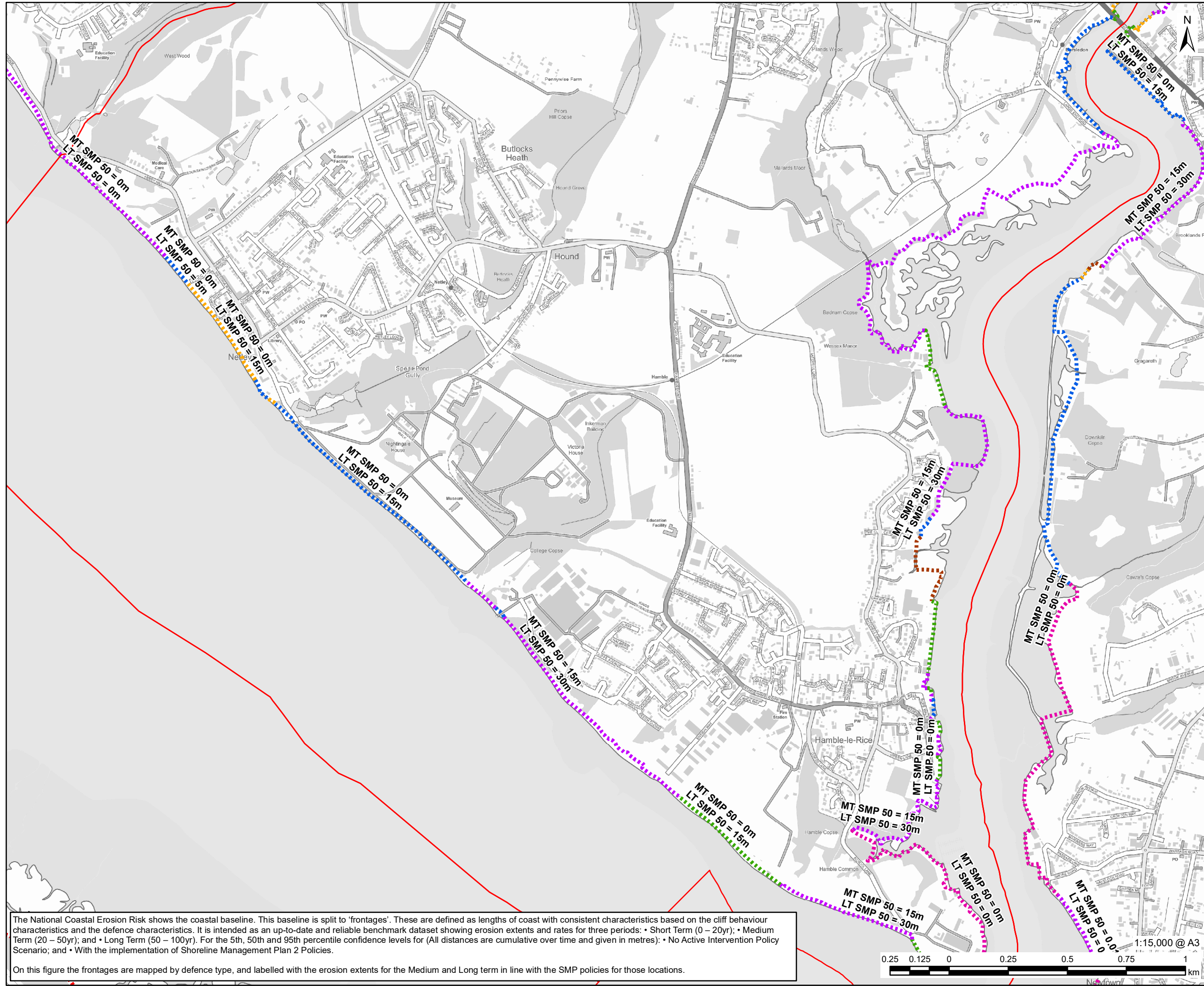
FIGURE NUMBER
Figure 1

The National Coastal Erosion Risk shows the coastal baseline. This baseline is split to 'frontages'. These are defined as lengths of coast with consistent characteristics based on the cliff behaviour characteristics and the defence characteristics. It is intended as an up-to-date and reliable benchmark dataset showing erosion extents and rates for three periods: • Short Term (0 – 20yr); • Medium Term (20 – 50yr); and • Long Term (50 – 100yr). For the 5th, 50th and 95th percentile confidence levels for (All distances are cumulative over time and given in metres): • No Active Intervention Policy Scenario; and • With the implementation of Shoreline Management Plan 2 Policies.

On this figure the frontages are mapped by defence type, and labelled with the erosion extents for the Medium and Long term in line with the SMP policies for those locations.



This drawing has been prepared for the use of AECOM's client. It may not be used, modified, reproduced or relied upon by third parties, except as agreed by AECOM or as required by law. AECOM accepts no responsibility, and denies any liability whatsoever, to any party that uses or relies on this drawing without AECOM's express written consent. Do not scale this document. All measurements must be obtained from the stated dimensions.



The National Coastal Erosion Risk shows the coastal baseline. This baseline is split to 'frontages'. These are defined as lengths of coast with consistent characteristics based on the cliff behaviour characteristics and the defence characteristics. It is intended as an up-to-date and reliable benchmark dataset showing erosion extents and rates for three periods: • Short Term (0 – 20yr); • Medium Term (20 – 50yr); and • Long Term (50 – 100yr). For the 5th, 50th and 95th percentile confidence levels for (All distances are cumulative over time and given in metres): • No Active Intervention Policy Scenario; and • With the implementation of Shoreline Management Plan 2 Policies.

On this figure the frontages are mapped by defence type, and labelled with the erosion extents for the Medium and Long term in line with the SMP policies for those locations.



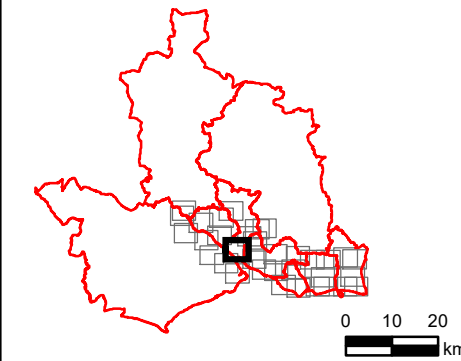
PROJECT
Partnership for South Hampshire Strategic Flood Risk Assessment

CLIENT
Portsmouth City Council on behalf of Eastleigh Borough Council

CONSULTANT
AECOM Limited
Sunley House
4 Bedford Park
Croydon, CR0 2AP
www.aecom.com

- LEGEND**
- Local Authority Boundary
 - National Coastal Erosion Risk Mapping (NCERM)**
 - Defence Type**
 - Embankment
 - Gabions
 - Natural
 - Revetment
 - Seawall
 - Timber Structure
 - Other

OVERVIEW



NOTES

© Environment Agency copyright and/or database right 2022.
Reproduced from Ordnance Survey digital map data © Crown copyright 2022. All rights reserved. Licence number 0100031673.

This map is intended to provide a strategic overview and should not be used to assess individual properties. Refer to the accompanying SFRA Report for details of the datasets and purpose of their use.

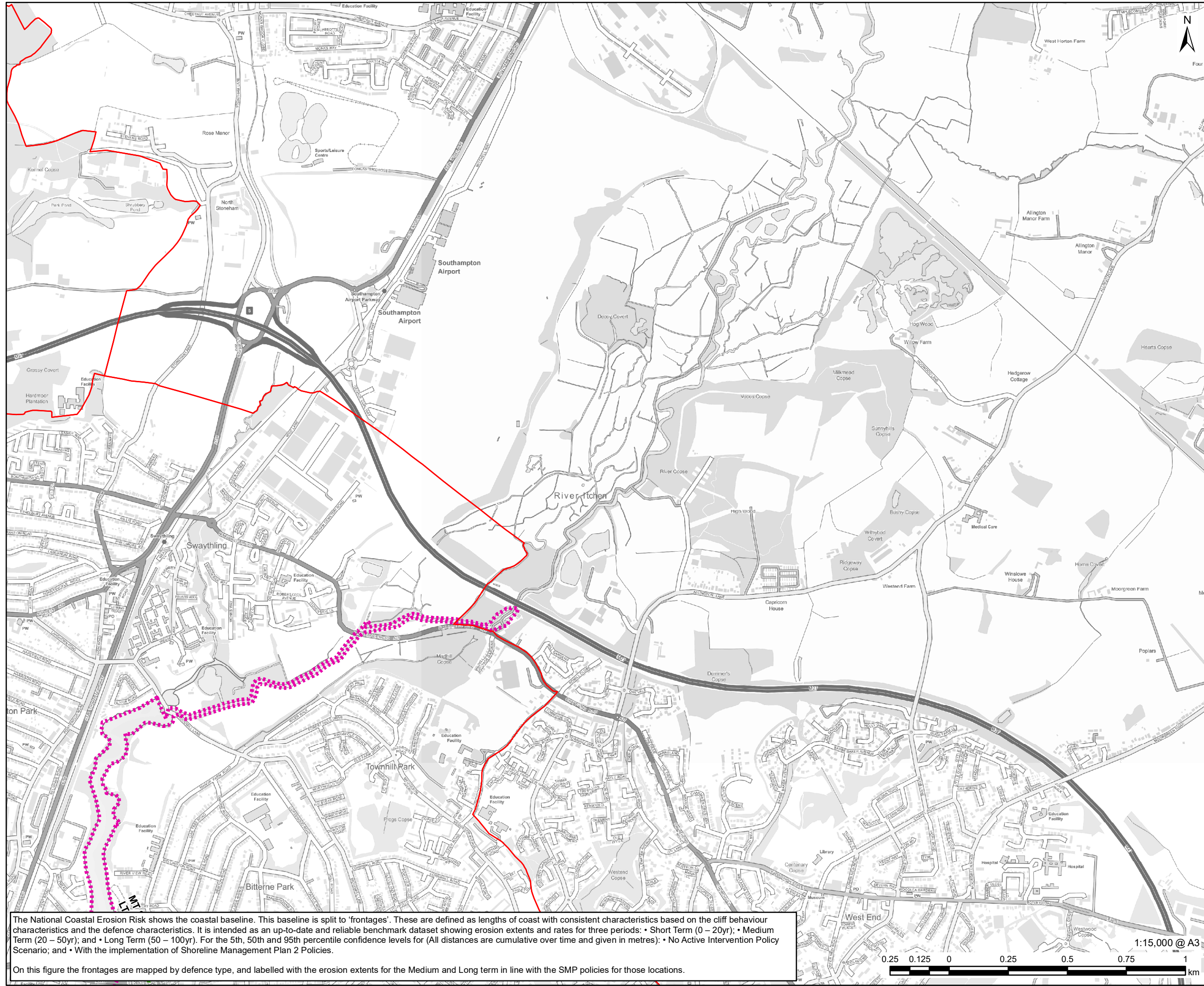
ISSUE PURPOSE
For Information

PROJECT NUMBER
60653132

FIGURE TITLE
Coastal Erosion Risk
Sheet 3 of 4

FIGURE NUMBER
Figure 1

The drawing has been prepared for the use of AECOM's client. It may not be used, modified, reproduced or relied upon by third parties, except as agreed by AECOM or as required by law. AECOM accepts no responsibility, and denies any liability whatsoever, to any party that uses or relies on this drawing without AECOM's express written consent. Do not scale this document. All measurements must be obtained from the stated dimensions.



The National Coastal Erosion Risk shows the coastal baseline. This baseline is split to 'frontages'. These are defined as lengths of coast with consistent characteristics based on the cliff behaviour characteristics and the defence characteristics. It is intended as an up-to-date and reliable benchmark dataset showing erosion extents and rates for three periods: • Short Term (0 – 20yr); • Medium Term (20 – 50yr); and • Long Term (50 – 100yr). For the 5th, 50th and 95th percentile confidence levels for (All distances are cumulative over time and given in metres): • No Active Intervention Policy Scenario; and • With the implementation of Shoreline Management Plan 2 Policies.

On this figure the frontages are mapped by defence type, and labelled with the erosion extents for the Medium and Long term in line with the SMP policies for those locations.



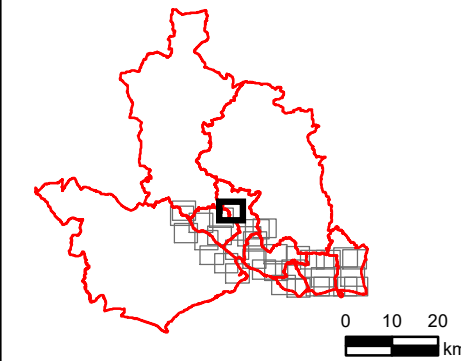
PROJECT
Partnership for South Hampshire Strategic Flood Risk Assessment

CLIENT
Portsmouth City Council on behalf of Eastleigh Borough Council

CONSULTANT
AECOM Limited
Sunley House
4 Bedford Park
Croydon, CR0 2AP
www.aecom.com

- LEGEND**
- Local Authority Boundary
 - National Coastal Erosion Risk Mapping (NCERM)**
 - Defence Type**
 - Embankment
 - Gabions
 - Natural
 - Revetment
 - Seawall
 - Timber Structure
 - Other

OVERVIEW



NOTES

© Environment Agency copyright and/or database right 2022.
Reproduced from Ordnance Survey digital map data © Crown copyright 2022. All rights reserved. Licence number 0100031673.

This map is intended to provide a strategic overview and should not be used to assess individual properties. Refer to the accompanying SFRA Report for details of the datasets and purpose of their use.

ISSUE PURPOSE
For Information

PROJECT NUMBER
60653132

FIGURE TITLE
Coastal Erosion Risk
Sheet 4 of 4

FIGURE NUMBER
Figure 1

This drawing has been prepared for the use of AECOM's client. It may not be used, modified, reproduced or relied upon by third parties, except as agreed by AECOM or as required by law. AECOM accepts no responsibility, and denies any liability whatsoever, to any party that uses or relies on this drawing without AECOM's express written consent. Do not scale this document. All measurements must be obtained from the stated dimensions.