

DATED 27th November 1959

HAMPSHIRE COUNTY COUNCIL

TOWN AND COUNTRY PLANNING ACT, 1947

TOWN AND COUNTRY PLANNING GENERAL  
DEVELOPMENT ORDER, 1950

DIRECTION UNDER ARTICLE 4, NO.9

Land within the Borough of Eastleigh and  
Rural District of Romsey and  
Stockbridge

TOWN AND COUNTRY PLANNING ACT, 1947

TOWN AND COUNTRY PLANNING GENERAL DEVELOPMENT ORDER, 1950

DIRECTION UNDER ARTICLE 4, NO. 9

WHEREAS:

(1) Article 3 of the Town and Country Planning General Development Order 1950 (hereinafter called "the Order") permits development by

(i) the use of land (other than a building or the curtilage of a building or the site or curtilage of a building which has been demolished in consequence of war damage) for any purpose on not more than 28 days in total in any calendar year and the erection or placing of moveable structures on the land for the purposes of that use

(ii) the carrying out on agricultural land having an area of more than one acre and comprised in an agricultural unit of building or engineering operations requisite for the use of that land for the purposes of agriculture other than the placing on land of structures not designed for those purposes or the provision and alteration of dwellings

being respectively Classes IV(2) and VI(1) of the First Schedule to the Order

(2) The operations and the uses of land specified in the First Schedule hereto are respectively development within Classes IV(2) and VI(1) of the Order

(3) The Hampshire County Council (hereinafter called "the Council") are the Local Planning Authority for the land specified in the Second Schedule hereto

(4) The Council deem it expedient that the development specified in the First Schedule hereto should not be carried out on the land specified in the Second Schedule hereto unless permission therefor is granted on application made under the Order

NOW THEREFORE the Council in pursuance of the powers conferred upon them by Article 4 of the Town and Country Planning General Development Order 1950 HEREBY DIRECT that the permission granted by Article 3 of the Order shall not apply to the development specified in the First Schedule hereto in respect of the land specified in the Second Schedule hereto

FIRST SCHEDULE

- (1) The use of land for any purpose and the erection or placing of moveable structures on the land for the purposes of that use
- (2) The carrying out on agricultural land of building or engineering operations requisite for the use of that land for the purposes of agriculture.

SECOND SCHEDULE

The land situate within the Borough of Eastleigh and the Rural District of Romsey and Stockbridge shown within a green line on the plan annexed hereto, being the Parcels numbered as follows on the Ordnance Survey Map for Hampshire:

<u>Parish</u>	<u>Ordnance Sheet Editions</u>	<u>Plot Numbers</u>		
North Stoneham	1909	Part 82	84	86
		Part 83	Part 85	
	1933	Part 50	143b	219
		Part 54	144	220
		55	145	221
		Part 56	147	222
		57	148	223
		58	149	224
		Part 59	153	225
		Part 60	154	226
		63	155	227
		74	156	228
		75	157	229
		Part 76	153	230
		77	159	231
		78	159a	256
		79	Part 176	264
		80	177	276
		81	177a	276a
		Part 82	177b	276b
		Part 83	177c	276c
		84	177d	276d
		Part 102	177e	276e
		Part 102a	177f	280
		105	178	281
		Part 106	179	281a
		107	180	282
		108	181	283
		109	183	284
		110	184	285
		135	185	288
		136	186	288a
	143	Part 213	311	
	143a	213a	312	
		316		
Chilworth	1909	Part 7	20	29
		8	21	30
		15	24	31
		17	26	33
		18	Part 27	37
		19	28	38
		39	54	Part 78
		40	55	79
		41	56	80

<u>Parish</u>	<u>Ordnance Sheet Editions</u>	<u>Plot Numbers</u>		
Chilworth	1909	42	58	81
		43	Part 61	82
		45	62	82a
		46	62a	83
		47	Part 66	84
		Part 48	67	85
		Part 50	68	86
		51	70a	Part 101
		52	Part 72	Part 106
		53	77	175
North Baddesley	1909	Part 145	Part 148	153
		Part 146	Part 149	154
		Part 147	152	
	1933	Part 145	Part 147	Part 149
		Part 146	Part 148	
Chandlers Ford	1909	Part 361	363	364
		362		
	1933	Part 318	360	Part 361
		Part 320		
Eastleigh	1933	84	131	139
		85	132	139a
		86	Part 133	139b
		Part 87	134	139c
		Part 88	136	140
		Part 127	136a	141
		128	137	148
		Part 129	137a	187
		130	Part 138	

GIVEN under the Common Seal of the Council this 27th day of November 1959.

THE COMMON SEAL of the HAMPSHIRE )  
COUNTY COUNCIL was hereunto affixed )  
in the presence of:

A. Lubbock

Richard Calthorpe

SEAL 4761

Two Members of the County Council

G. A. Wheatley

Clerk of the County Council

P8732

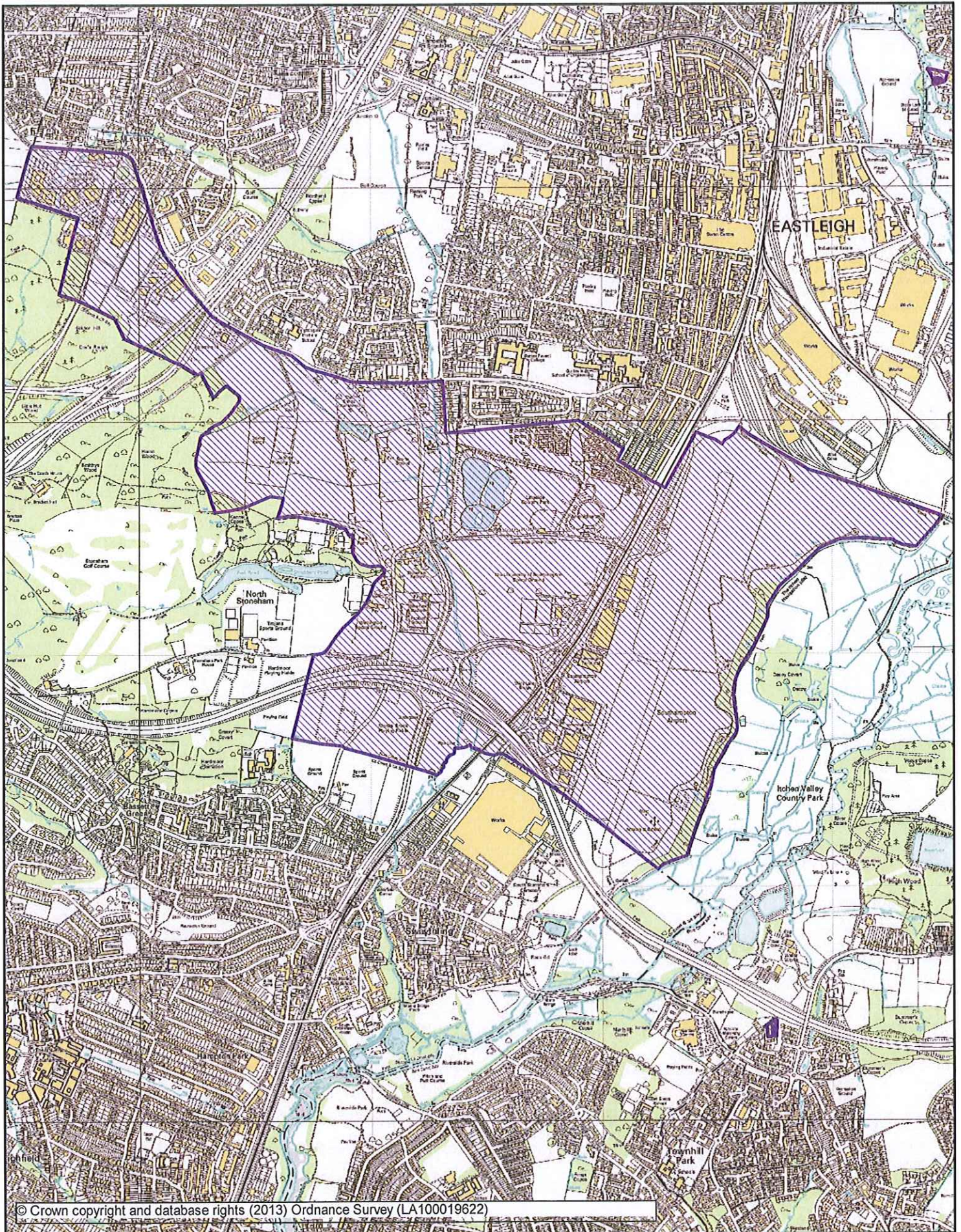
The Minister of Housing and Local Government hereby approves the foregoing direction

Given under the official seal of the  
Minister of Housing and Local Government  
this eighteenth day of July  
nineteen hundred and sixty one.

H.H. Browne.

Assistant Secretary,  
Ministry of Housing and Local Government.

SEAL.



**EASTLEIGH**  
BOROUGH COUNCIL

Title: **ARTICLE 4 - 1961**

Scale:  
1:21000

Map Ref:  
SU4417

Date:  
03/10/2013

